

*PREMIER AAA PLUG AND PLAY
OFFICE FOR SUBLEASE*

161 BAY STREET
TORONTO, ON

SUITE 2410 - 4,066 SF





Availability

Suite 2410 - 4,066 SF

Net Rent

Please call listing agent to discuss

Additional Rent

\$35.56 PSF (2024 estimate)

Occupancy

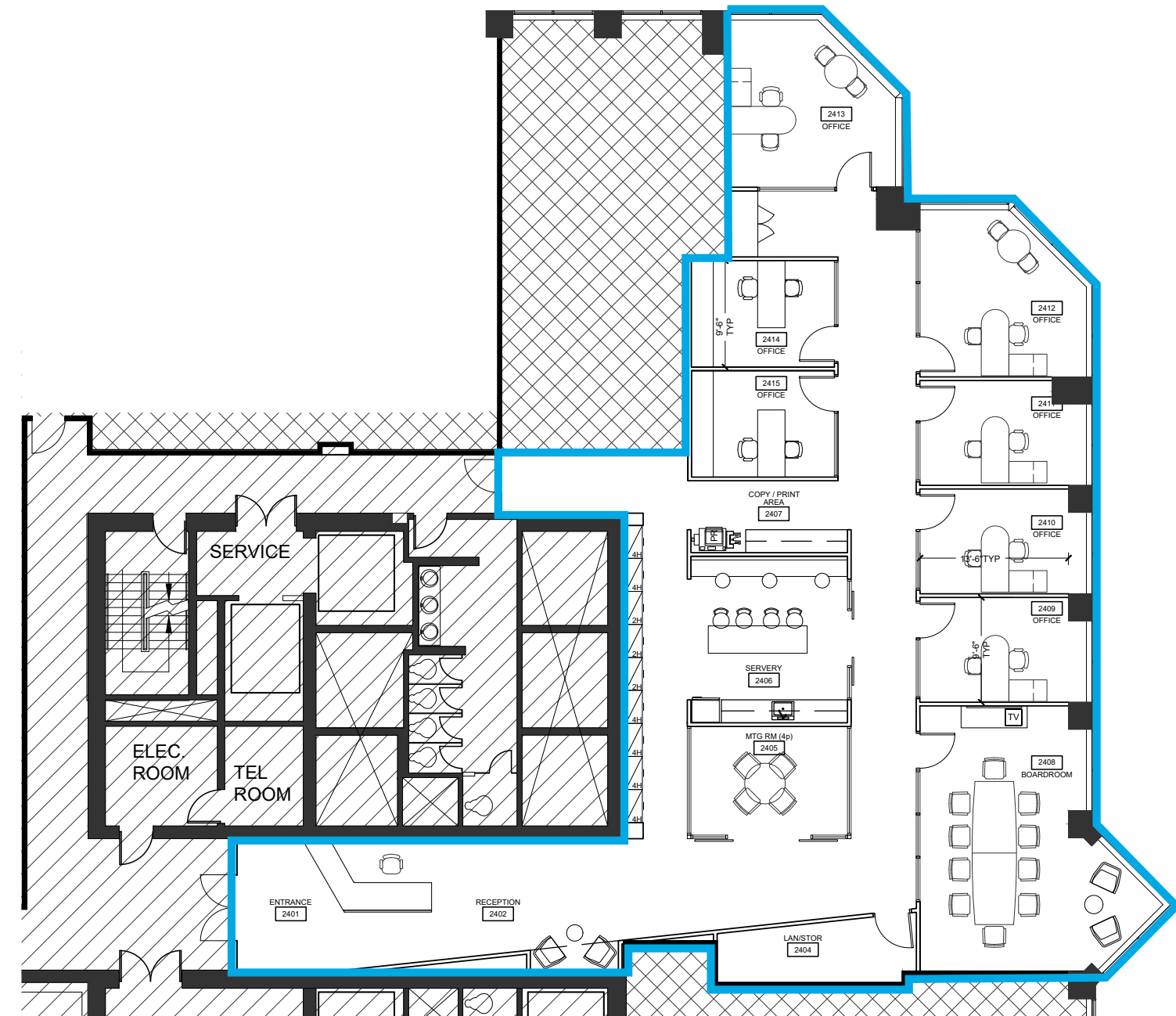
April 1, 2024

Sublease Expiry

March 29, 2029

SUITE 2410 - 4,066 SF

Floor Plan

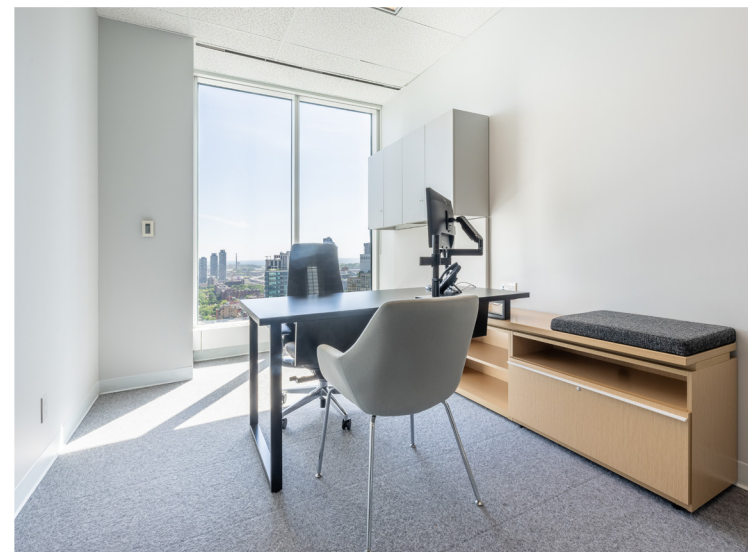


Property Highlights

- Class-AAA Office Space with high end finishes
- Combination of reception, 7 private offices, a spacious boardroom, meeting room, and collaborative kitchen
- Furniture included
- Eco-friendly building practices and energy efficient technologies
- Upscale dining options within the building and within vicinity
- Seamlessly connected to Toronto's PATH, Union Station, and primary transportation hubs
- Ample on-site vehicle parking



Property Pictures

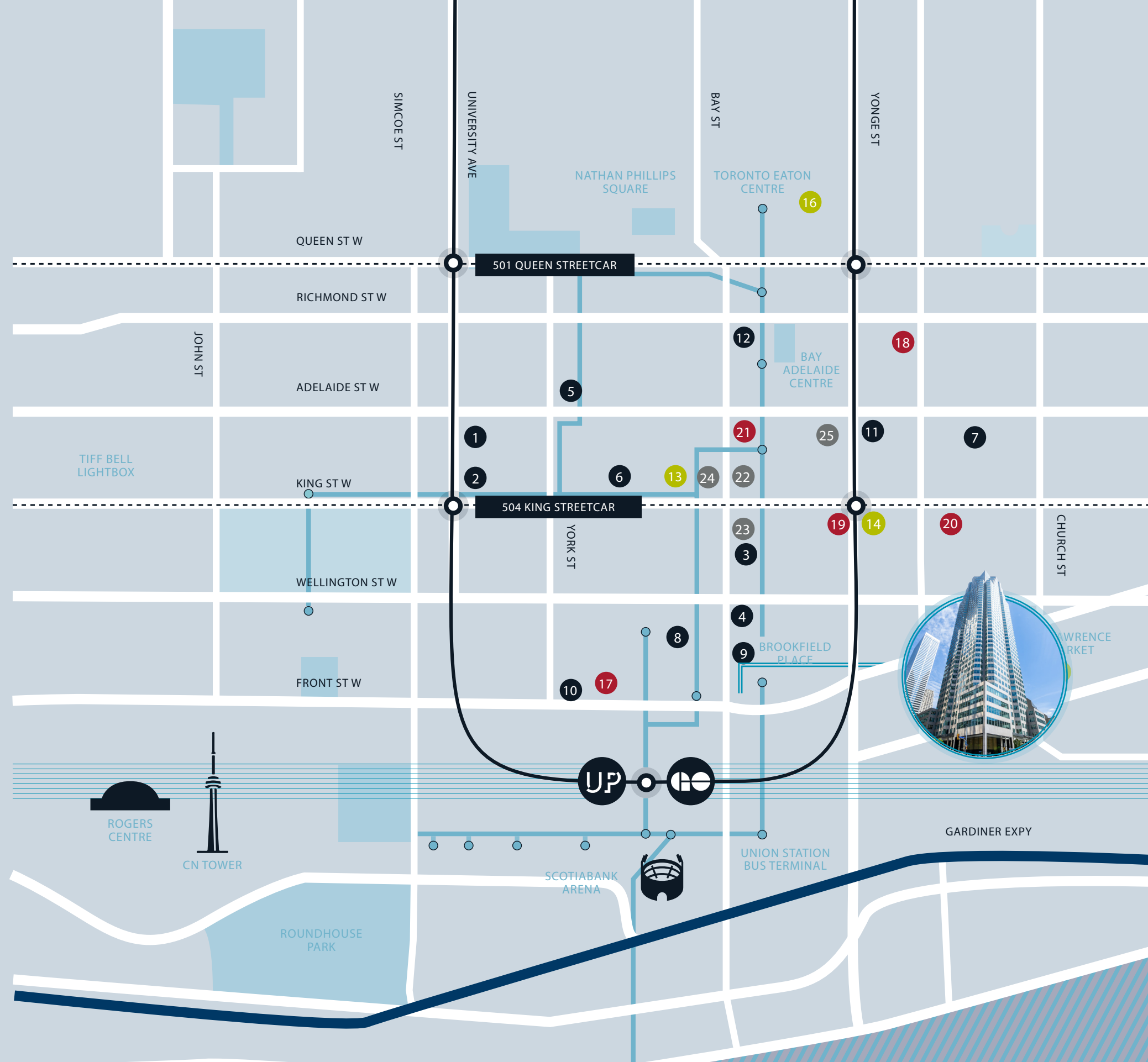


161 BAY STREET

TORONTO, ON

LEGEND

- | | |
|---|--|
|  DINING & CAFE |  HOTELS |
|  SHOPPING |  BANKS |
|  PATH |  SUBWAY |
-
- | | |
|---|--|
|  Pizzeria Libretto |  LCBO |
|  Earls Kitchen & Bar |  Shoppers Drug Mart |
|  Dineen |  St. Lawrence Market |
|  Ki Modern |  Eaton Centre |
|  Cactus Club Cafe |  Fairmont Royal York |
|  King Taps |  Cambridge Suites |
|  Terroni |  One King West |
|  Mos Mos |  The Omni King Edward |
|  Chotto Matte |  St. Regis Hotel |
|  Starbucks |  Scotiabank |
|  Craft Brewerie |  CIBC |
|  Hy's Steakhouse |  BMO |
| |  TD Canda Trust |





CONTACT INFORMATION

CAMERON MITCHELL*
Vice President
+1 416 359 2445
+1 416 786 0500
cam.mitchell@cushwake.com

TD Canada Trust Tower
161 Bay Street, Suite 1500
Toronto, ON M5J 2S1
+1 416 862 0611
cushmanwakefield.ca

