

440-442 OAKMEAD PARKWAY

SUNNYVALE, CALIFORNIA | ±6,031 SF - ±12,501 SF R&D/LAB FOR LEASE



For more information, please contact:

STEVE PACE
P +1 408 482 7037
steve.pace@cushwake.com
LIC #00817396

DAN HOLLINGSWORTH
P +1 408 615 3431
dan.hollingsworth@cushwake.com
LIC #01117716

TIANA DAMPIER
P +1 408 436 3680
tiana.dampier@cushwake.com
LIC #02191012

300 Santana Row, Fifth Floor
San Jose, California 95128
P +1 408 615 3400
www.cushmanwakefield.com



DOLLINGER PROPERTIES
DRE #02116818



**CUSHMAN &
WAKEFIELD**

440-442 OAKMEAD PARKWAY

Sunnyvale, California

Project Highlights

- High Image Sunnyvale End Units Exposure
- Quick Access to Hwy 101
- Parking: 3.18 Spaces/1000 SF

440 Oakmead

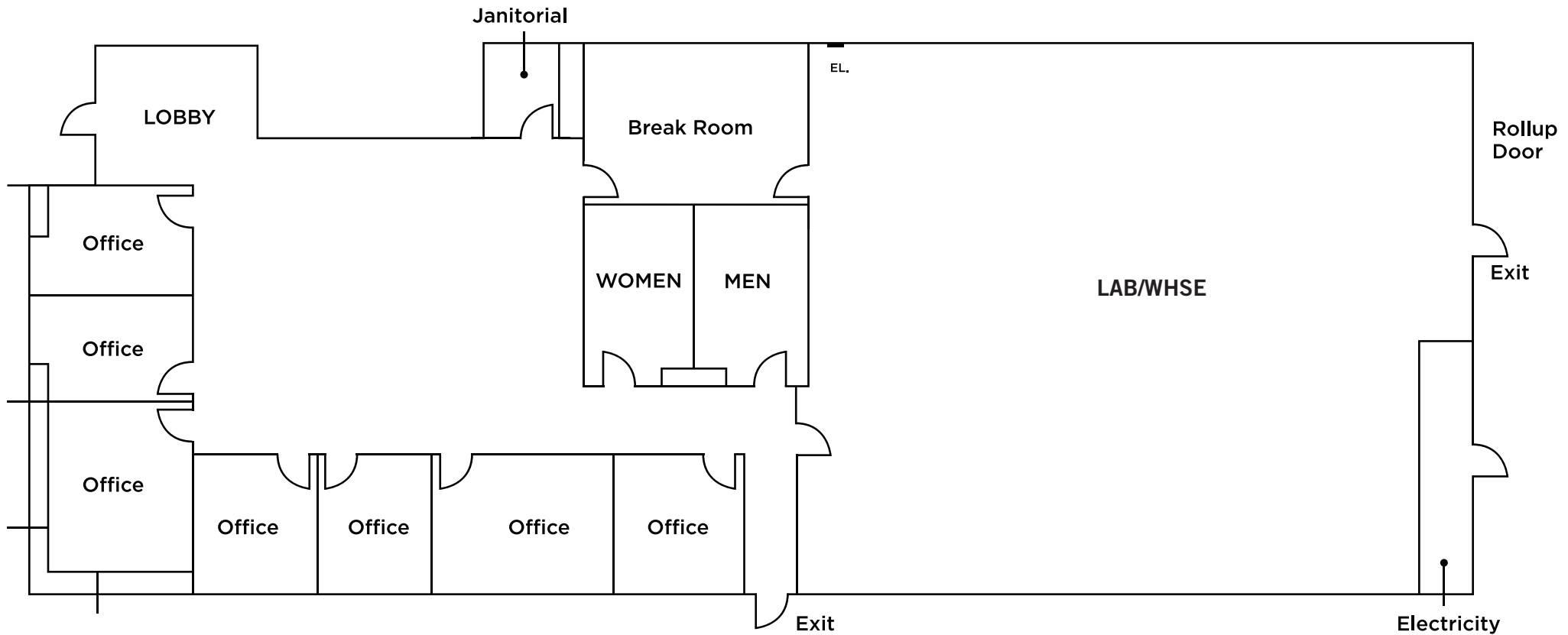
- Power: 600A @ 120/208V
- HVAC: 20 Tons
- Grade Level Loading
- Lab Area

442 Oakmead

- Power: 600A @ 120/208V
- 100% HVAC
- Grade Level Loading
- Lab Area



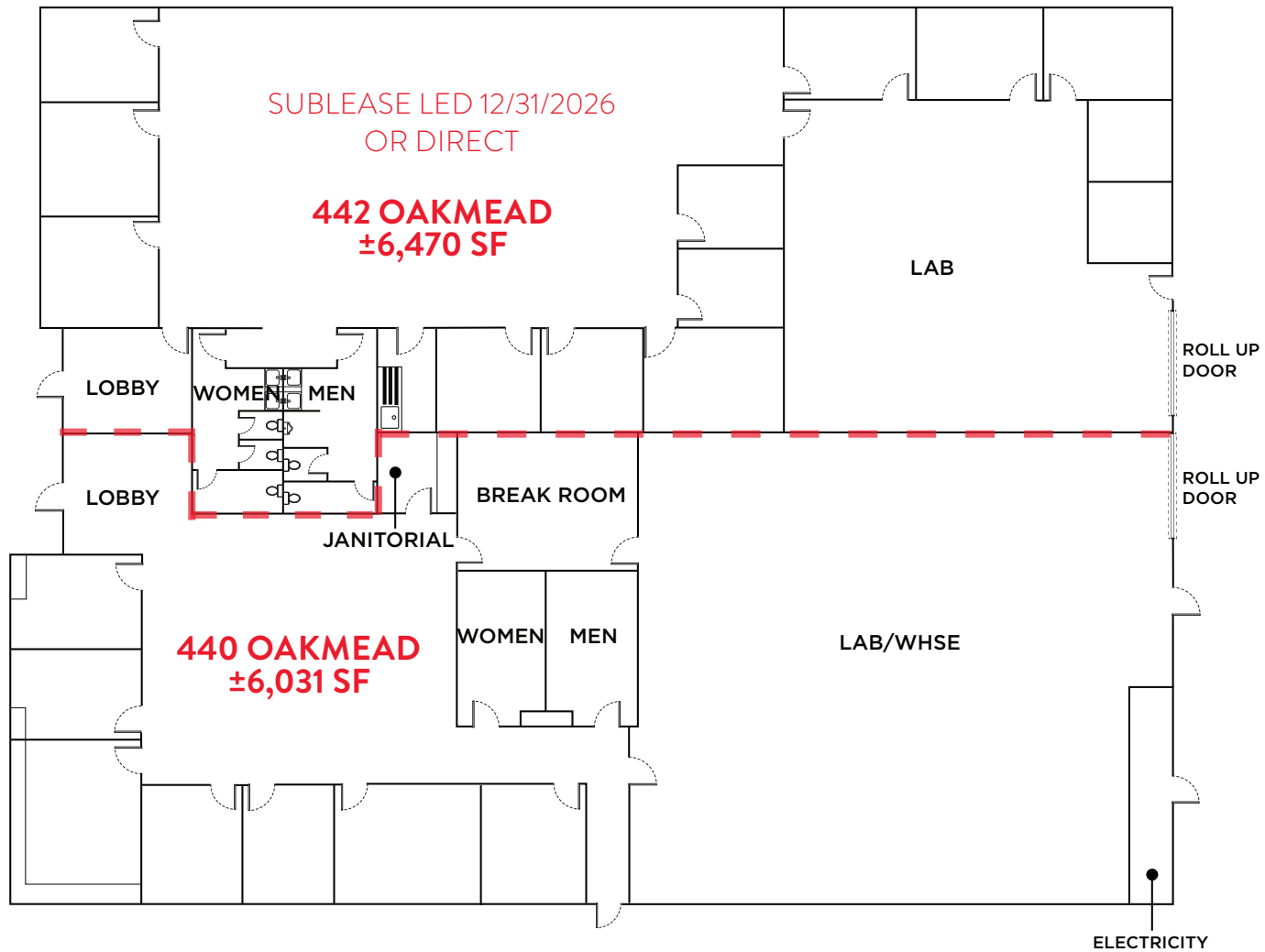
Floor Plan | ±6,031 SF



Floor Plan | ±12,501 SF

440 OAKMEAD, ±6,031 SF

442 OAKMEAD, ±6,470 SF



--- Demising Wall

440-442 OAKMEAD PARKWAY

Sunnyvale, California

Public Transit and Amenities

