



N. SR 135

Greenwood, IN

±45 ACRES

PROPERTY HIGHLIGHTS

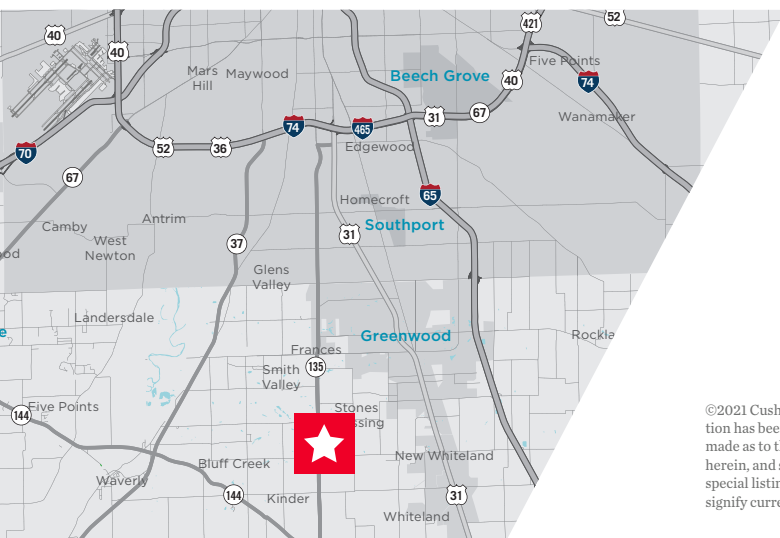
±45 acres located in desirable Center Grove

City utilities nearby

Zoned CL (Commercial Large) and AG

Potential Multifamily Site

Asking \$60,000/acre



BO LEFFEL

Senior Director

+1 317 639 0441

bo.leffel@cushwake.com

One American Square, Suite 1800 | Indianapolis, IN 46282

Main +1 317 639 0515 | Fax +1 317 639 0504

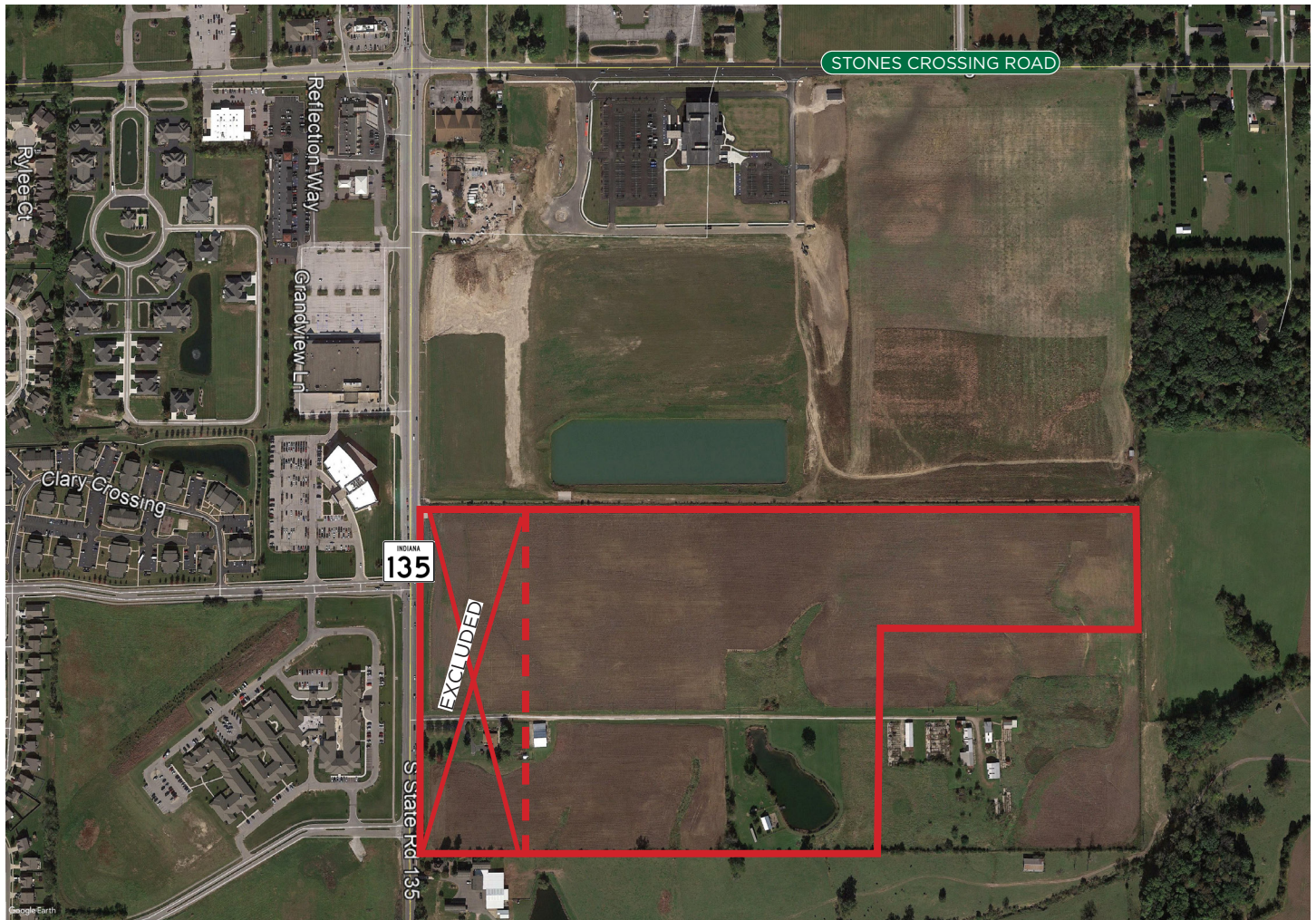
cushmanwakefield.com

©2021 Cushman & Wakefield. All rights reserved. The information contained in this communication is strictly confidential. This information has been obtained from sources believed to be reliable but has not been verified. No warranty or representation, express or implied, is made as to the condition of the property (or properties) referenced herein or as to the accuracy or completeness of the information contained herein, and same is submitted subject to errors, omissions, change of price, rental or other conditions, withdrawal without notice, and to any special listing conditions imposed by the property owner(s). Any projections, opinions or estimates are subject to uncertainty and do not signify current or future property performance.

N. SR 135

Greenwood, IN

±45 ACRES



Demographics

	1 Mile	3 Mile	5 Mile
Population	3,079	40,977	113,866
AVG. HH Income	\$118,035	\$109,913	\$92,190
Daytime Population	1,593	18,412	60,356

Traffic Count

SR 135: 24,136 VPD
Stones Crossing Rd: 6,247 VPD

BO LEFFEL

Senior Director
+1 317 639 0441
bo.leffel@cushwake.com

One American Square, Suite 1800
Indianapolis, IN 46282
Main +1 317 639 0515
Fax +1 317 639 0504
cushmanwakefield.com