

FOR SALE

3080 N State Road 39
Lebanon, IN



Property Highlights

- ±112 Acres
- Zoned R2 in Boone County
- Municipal Water and Sewer nearby
- Asking \$3,236,800

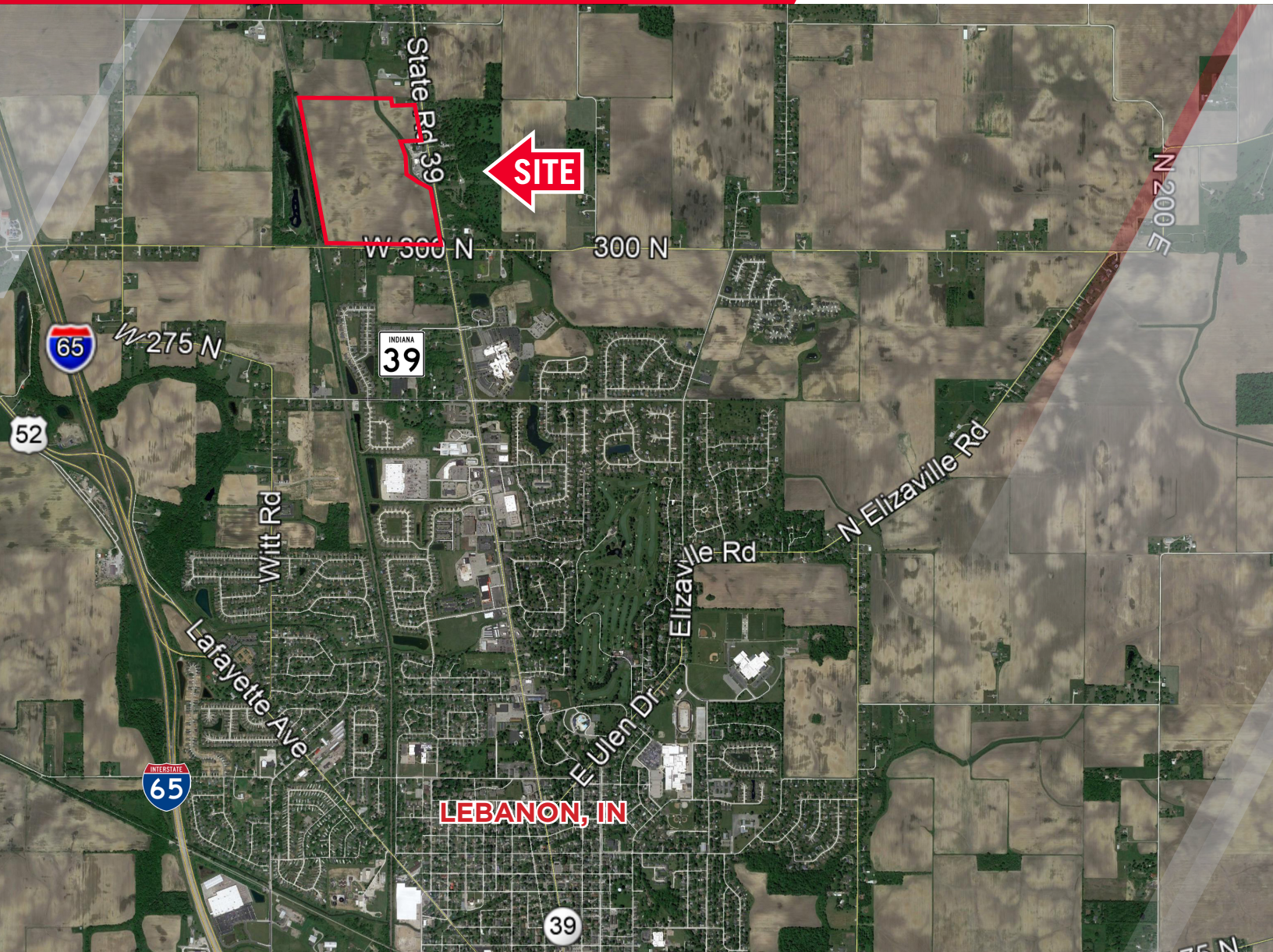
Contact

BO LEFFEL
Senior Director
+1 317 639 0441
bo.leffel@cushwake.com

CUSHMAN & WAKEFIELD
One American Square | Suite 1800
Indianapolis, IN 46282
cushmanwakefield.com

FOR SALE

3080 N State Road 39
Lebanon, IN



Demographics

	3 Miles	5 Miles	10 Miles
Population	14,498	19,130	32,172
Average Household Income	\$67,716	\$66,118	\$71,355
Daytime Population (Age 16+)	11,669	15,931	24,898

2020 estimates. Source: Applied Geographic Solutions 11/2020, TIGER Geography

Contact

BO LEFFEL
Senior Director
+1 317 639 0441
bo.leffel@cushwake.com

CUSHMAN & WAKEFIELD
One American Square | Suite 1800
Indianapolis, IN 46282
cushmanwakefield.com