

**571 W 161ST ST**

Westfield, IN 46074

**±2.2 ACRES**

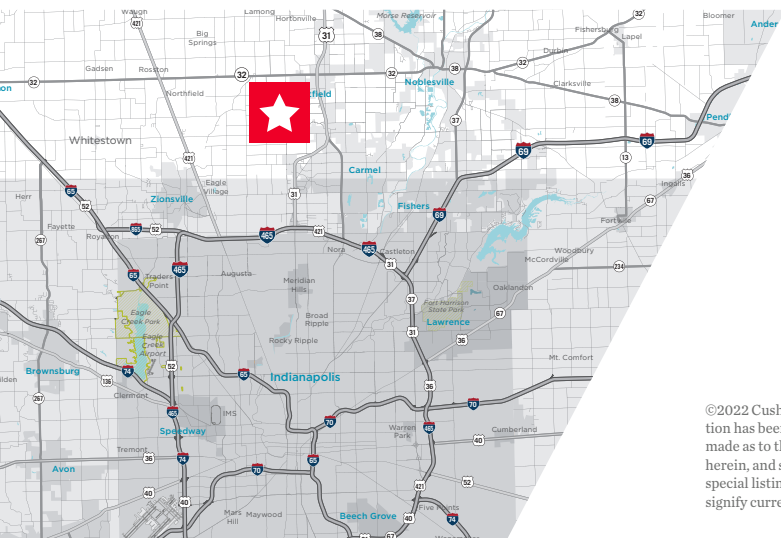
**PROPERTY HIGHLIGHTS**

±2.2 acres near Spring Mill Rd and 161st St

Utilities to site

Located next to Shamrock Springs Elementary School

Zoned PUD allowing various commercial uses



**BO LEFFEL**  
Senior Director  
+1 317 639 0441  
bo.leffel@cushwake.com

**MATT KITE, J.D.**  
Associate  
+1 317 616 3981  
matt.kite@cushwake.com

One American Square, Suite 1800 | Indianapolis, IN 46282  
Main +1 317 639 0515 | Fax +1 317 639 0504  
cushmanwakefield.com

©2022 Cushman & Wakefield. All rights reserved. The information contained in this communication is strictly confidential. This information has been obtained from sources believed to be reliable but has not been verified. No warranty or representation, express or implied, is made as to the condition of the property (or properties) referenced herein or as to the accuracy or completeness of the information contained herein, and same is submitted subject to errors, omissions, change of price, rental or other conditions, withdrawal without notice, and to any special listing conditions imposed by the property owner(s). Any projections, opinions or estimates are subject to uncertainty and do not signify current or future property performance.



# 571 W 161ST ST

Westfield, IN 46074

±2.2 ACRES



## Demographics

	1 Mile	3 Mile	5 Mile
Population	8,367	48,467	112,854
AVG. HH Income	\$108,272	\$131,235	\$143,695
Daytime Population	2,445	24,228	78,535

## Traffic Count

US 31: 68,810 VPD  
161st Street: 11,220 VPD

**BO LEFFEL**  
Senior Director  
+1 317 639 0441  
bo.leffel@cushwake.com

**MATT KITE, J.D.**  
Associate  
+1 317 616 3981  
matt.kite@cushwake.com

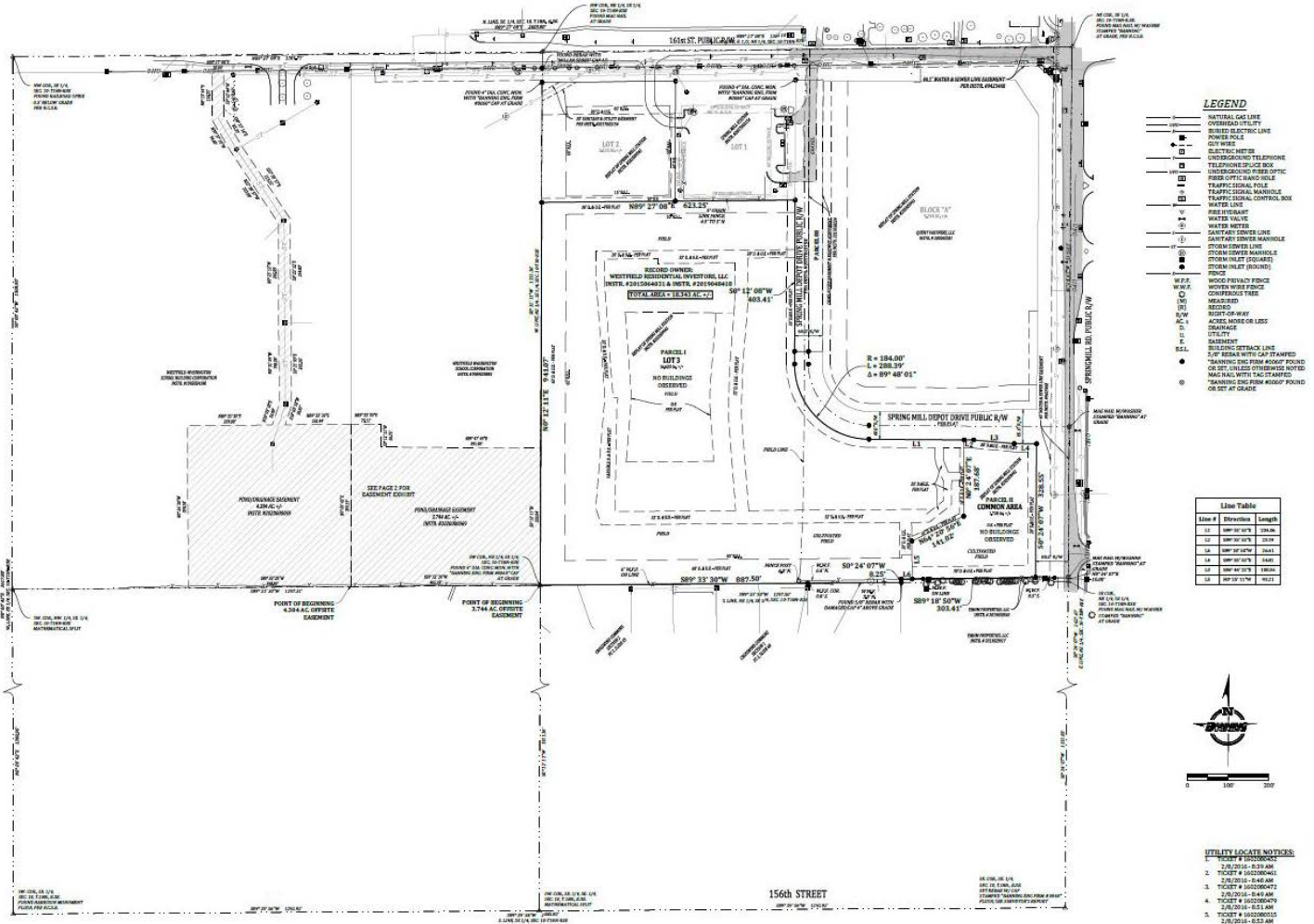
One American Square, Suite 1800  
Indianapolis, IN 46282  
Main +1 317 639 0515  
Fax +1 317 639 0504  
[cushmanwakefield.com](http://cushmanwakefield.com)

# 571 W 161ST ST

Westfield, IN 46074

±2.2 ACRES

## SURVEY



**BO LEFFEL**  
Senior Director  
+1 317 639 0441  
bo.leffel@cushwake.com

**MATT KITE, J.D.**  
Associate  
+1 317 616 3981  
matt.kite@cushwake.com

One American Square, Suite 1800  
Indianapolis, IN 46282  
Main +1 317 639 0515  
Fax +1 317 639 0504  
[cushmanwakefield.com](http://cushmanwakefield.com)