



FOR SALE



±11.82 ACRES

Indiana Street
Mooresville, IN 46158

PROPERTY HIGHLIGHTS

±11.82 Acres

Zoned R3

Utilities onsite

Mooresville Schools

Located Northwest of IN-67

Walking distance to local restaurants and retail

Asking Price: \$850,000



MATT KITE, J.D.
Director
+1 317 616 3981
matt.kite@cushwake.com

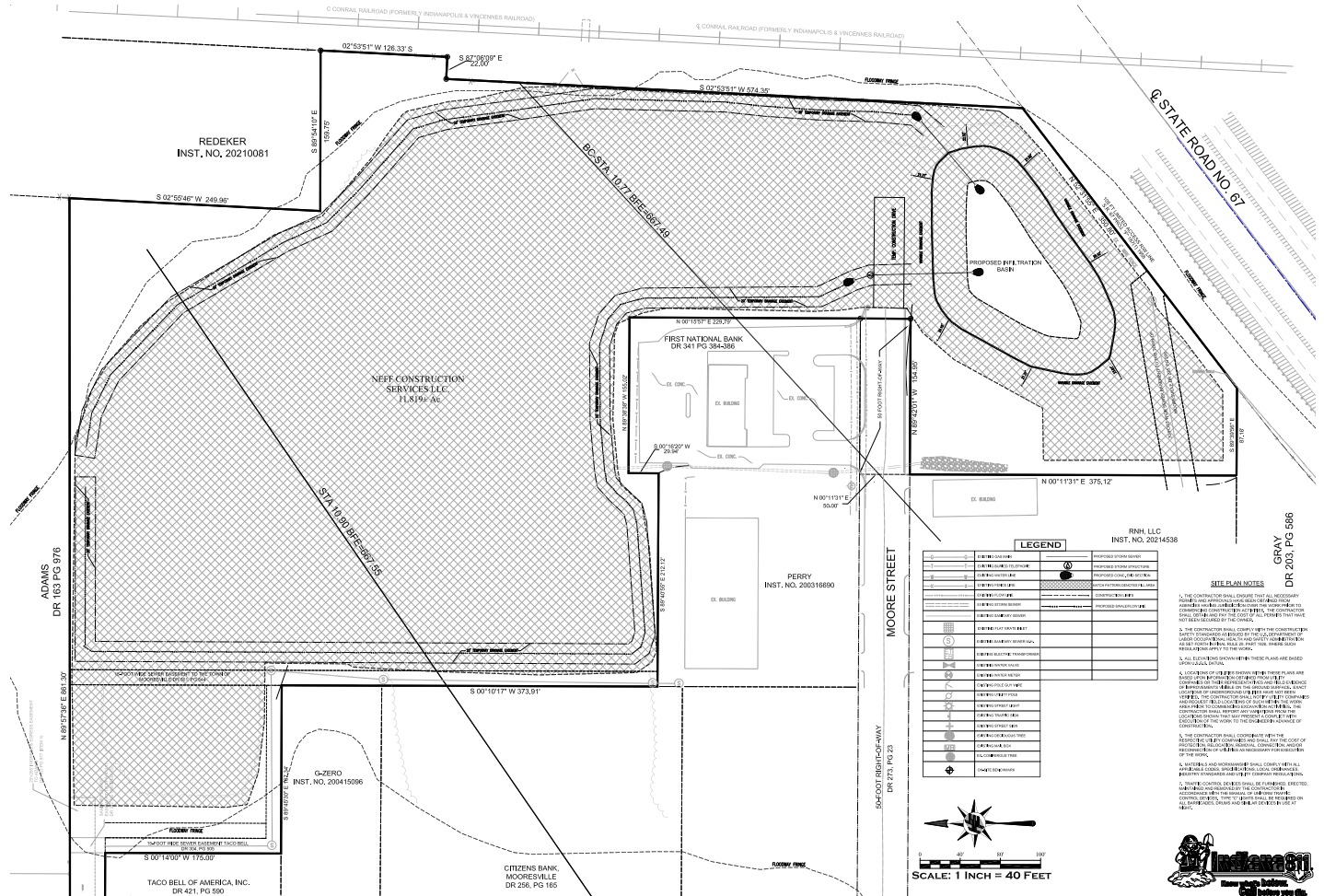
BO LEFFEL
Vice Chair
+1 317 639 0441
bo.leffel@cushwake.com

One American Square, Suite 1800 | Indianapolis, IN 46282
Main +1 317 639 0515 | Fax +1 317 639 0504
cushmanwakefield.com

©2024 Cushman & Wakefield. All rights reserved. The information contained in this communication is strictly confidential. This information has been obtained from sources believed to be reliable but has not been verified. No warranty or representation, express or implied, is made as to the condition of the property (or properties) referenced herein or as to the accuracy or completeness of the information contained herein, and same is submitted subject to errors, omissions, change of price, rental or other conditions, withdrawal without notice, and to any special listing conditions imposed by the property owner(s). Any projections, opinions or estimates are subject to uncertainty and do not signify current or future property performance.

±11.82 ACRES

Indiana Street
Mooresville, IN 46158



Demographics

	1 Mile	3 Mile	5 Mile
Population	4,270	15,926	40,946
AVG. HH Income	\$69,031	\$78,833	\$90,273
Daytime Population	6,266	13,364	23,853

Traffic Counts

S. Indiana Street	11,302 AADT
IN -67	20,735 AADT

MATT KITE, J.D.
Director
+1 317 616 3981
matt.kite@cushwake.com

BO LEFFEL
Vice Chair
+1 317 639 0441
bo.leffel@cushwake.com

One American Square, Suite 1800
Indianapolis, IN 46282
Main +1 317 639 0515
Fax +1 317 639 0504
cushmanwakefield.com