

4,330 SQUARE FEET AVAILABLE FOR SUBLEASE



2270 CAMINO VIDA ROBLE, SUITE J, CARLSBAD, CALIFORNIA 92011



RYAN DOWNING
858.546.5416
ryan.downing@cushwake.com
CA LIC. 01955032

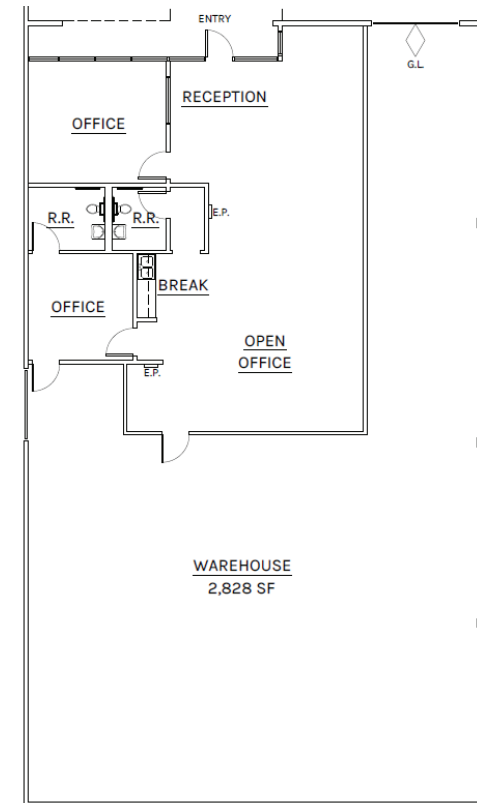
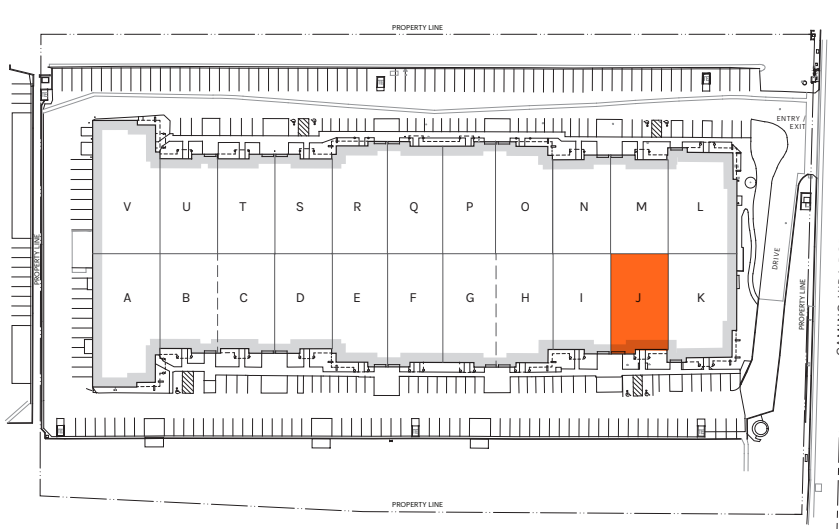
WESTON YAHN
760.302.6343
weston.yahn@cushwake.com
CA LIC. 01975469

2270 CAMINO VIDA ROBLE

SUITE J, CARLSBAD, CALIFORNIA 92011

SUITE SPECIFICATIONS:

- SUITE J
- 4,330 SF
- ±35% OFFICE, BALANCE WAREHOUSE
- (1) GRADE LEVEL
- AVAILABLE NOW
- MASTER LEASE EXPIRES 3/31/2024
- RATE: \$1.20 MG
- CAMS: ±\$0.09 PSF



©Cushman & Wakefield. All rights reserved. This information has been obtained from sources believed to be reliable but has not been verified. NO WARRANTY OR REPRESENTATION, EXPRESS OR IMPLIED, IS MADE AS TO THE CONDITION OF THE PROPERTY (OR PROPERTIES) REFERENCED HEREIN OR AS TO THE ACCURACY OR COMPLETENESS OF THE INFORMATION CONTAINED HEREIN, AND SAME IS SUBMITTED SUBJECT TO ERRORS, OMISSIONS, CHANGE OF PRICE, RENTAL OR OTHER CONDITIONS, WITHDRAWAL WITHOUT NOTICE, AND TO ANY SPECIAL LISTING CONDITIONS IMPOSED BY THE PROPERTY OWNER(S).



RYAN DOWNING
858.546.5416
ryan.downing@cushwake.com
CA LIC. 01955032

WESTON YAHN
760.302.6343
weston.yahn@cushwake.com
CA LIC. 01975469

2270 CAMINO VIDA ROBLE

SUITE J, CARLSBAD, CALIFORNIA 92011

