



FOR LEASE



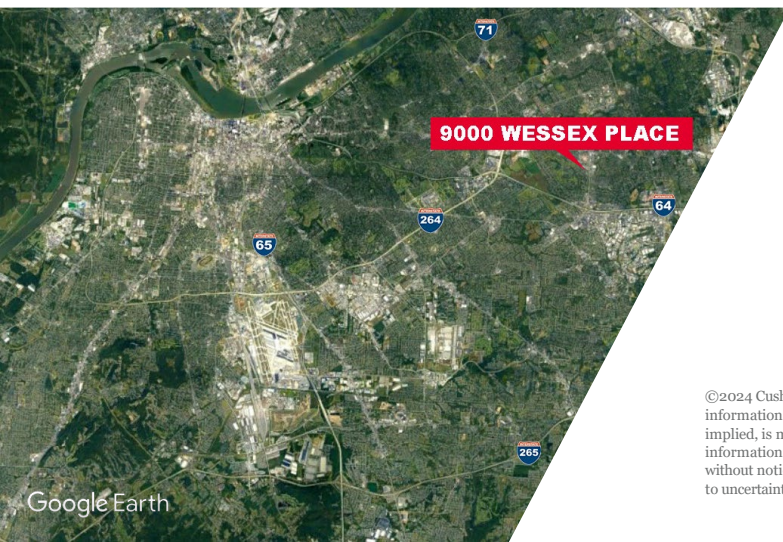
9000 WESSEX PLACE

Louisville, KY 40222

2,339 – 3,048 SF
AVAILABLE

PROPERTY HIGHLIGHTS

- Well-maintained, efficient office building
- Superior east end lease value
- Strategically positioned in the Shelbyville/Hurstbourne intersection
- Superior walkability to nearby, restaurants, banks, hospitality and new apartments



SAM GRAY

Senior Associate
+1 502 589 5150 ext. 240
samgray@commercialkentucky.com

SAM ENGLISH, CFA

Senior Director
+1 502 589 5150 ext. 244
senglish@commercialkentucky.com

333 E Main Street, Suite 510
Louisville, KY 40202
Main +1 502 589 5150
www.Commercialkentucky.com

©2024 Cushman & Wakefield. All rights reserved. The information contained in this communication is strictly confidential. This information has been obtained from sources believed to be reliable but has not been verified. No warranty or representation, express or implied, is made as to the condition of the property (or properties) referenced herein or as to the accuracy or completeness of the information contained herein, and same is submitted subject to errors, omissions, change of price, rental or other conditions, withdrawal without notice, and to any special listing conditions imposed by the property owner(s). Any projections, opinions or estimates are subject to uncertainty and do not signify current or future property performance.

9000 WESSEX PLACE

Louisville, KY 40222

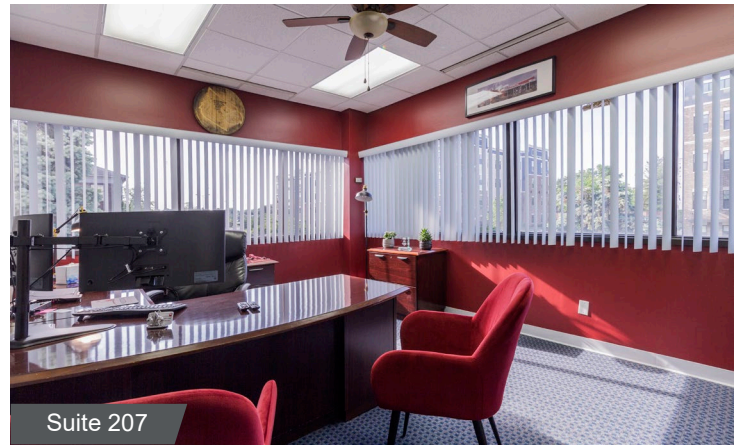
2,339 – 3,048 SF AVAILABLE



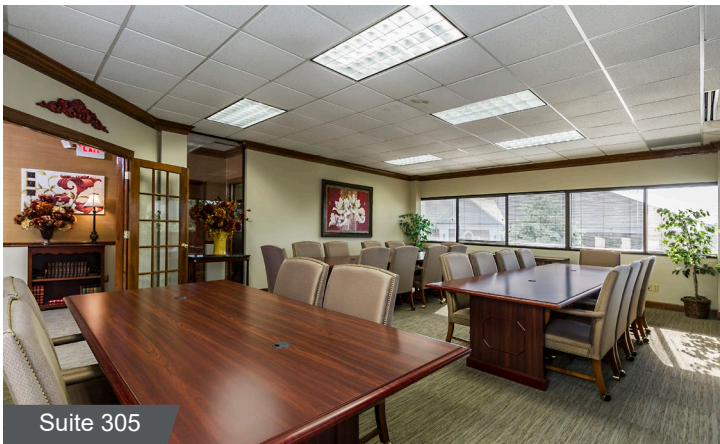
PROPERTY PHOTOS



Suite 207



Suite 207



Suite 305



Suite 305

Demographics

	1 Mile	3 Mile	5 Mile
Population	11,269	78,779	202,341
AVG. HH Income	\$128,529	\$100,778	\$107,506
Households	5,231	35,394	88,473

Traffic Counts

S. Hurstbourne Parkway	33,927
Shelbyville Road	42,262

SAM GRAY

Senior Associate
+1 502 589 5150 ext. 240
samgray@commercialkentucky.com

SAM ENGLISH, CFA

Senior Director
+1 502 589 5150 ext. 244
senglish@commercialkentucky.com

333 E Main Street, Suite 510
Louisville, KY 40202
Main +1 502 589 5150
www.Commercialkentucky.com

9000 WESSEX PLACE

Louisville, KY 40222

2,339 – 3,048 SF AVAILABLE



AERIAL/LOCATION MAP



SAM GRAY
Senior Associate
+1 502 589 5150 ext. 240
samgray@commercialkentucky.com

SAM ENGLISH, CFA
Senior Director
+1 502 589 5150 ext. 244
senenglish@commercialkentucky.com

333 E Main Street, Suite 510
Louisville, KY 40202
Main +1 502 589 5150
www.Commercialkentucky.com