

5,200 SF

Industrial Space For Lease



Prologis West One Business Center - Building #2

3555 W. Reno Avenue, Suite F
Las Vegas, NV 89118 USA

LOCATION

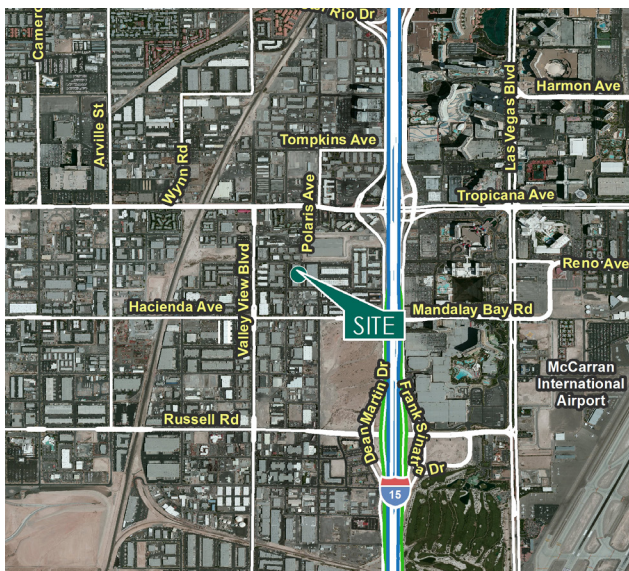
- Conveniently located in the heart of the Las Vegas Southwest submarket with easy access to the I-15 and I-215 Freeways, Harry Reid International Airport, Town Square and the Las Vegas Strip.
- Zoned Industrial: M-1 (Clark County)

FACILITY

- Total Building Square Footage - ±62,133 SF
- Available Square Footage - ±5,200 SF
- ±2,012 SF of Existing Office Space
- Two (2) Dock High Loading Doors and One (1) Drive-In Door
- Fire Sprinkler System (0.28 gpm/2,000 sf)
- 20' Minimum Clear Height
- Rear Loading
- 120/208 Volts, 3-Phase Power

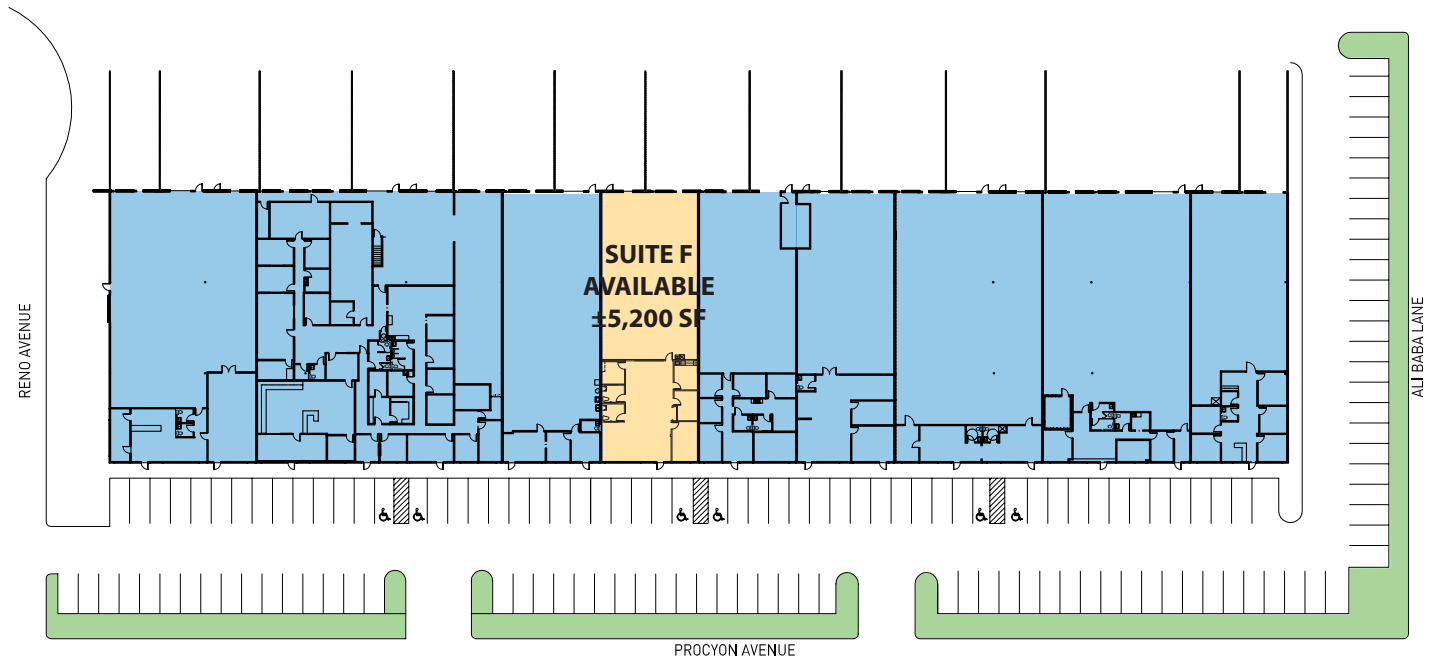
ADVANTAGES AND AMENITIES

- Close proximity to Tropicana Avenue and Russell Road exit ramp off of the I-15 freeway
- Near an abundance of restaurants, shopping venues, and industrial owners/users and manufacturing/distribution facilities.



5,200 SF

Industrial Space For Lease



C&W - Nick Abraham

Director
nick.abraham@cushwake.com
ph +1 702 605 1620
Lic. S.00176348
6725 Via Austi Parkway
Suite 275
Las Vegas, NV 89119 USA

C&W - Greg Tassi, SIOR

Executive Managing Director
greg.tassi@cushwake.com
ph +1 702 605 1713
Lic. S.0056472
6725 Via Austi Parkway
Suite 275
Las Vegas, NV 89119 USA

Prologis - Lisa Brady

VP - Market Officer
lbrady@prologis.com
ph +1 702 891 9141
Lic. S.1002217
3883 Howard Hughes Parkway
Suite 850
Las Vegas, NV 89169 USA

Prologis - Renee Carroll

Senior Leasing Manager
rcarroll@prologis.com
ph +1 702 891 9503
Lic. S.168458 & PM.0164416
3883 Howard Hughes Parkway
Suite 850
Las Vegas, NV 89169 USA

No warranty or representation, expressed or implied, is made as to the accuracy of the information contained herein, and same is submitted subject to error and omissions.

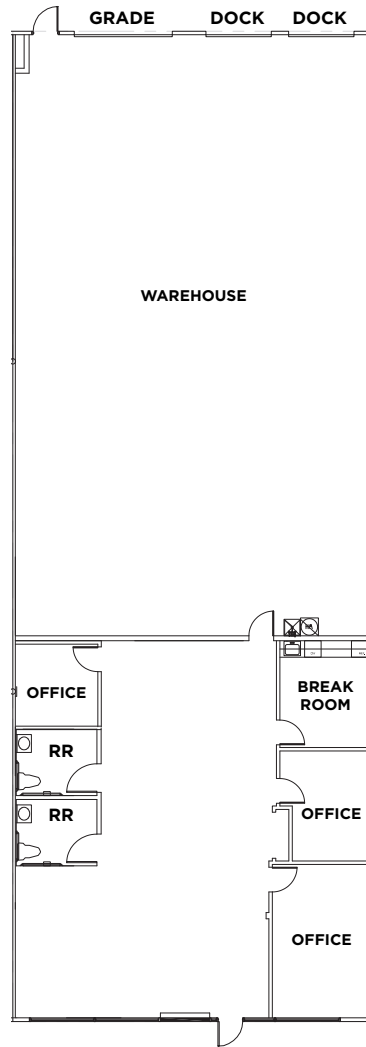
www.prologis.com

www.cushmanwakefield.com

© 2023 Cushman & Wakefield U.S., Inc. All rights reserved. This information has been obtained from sources believed reliable, but has not been verified for accuracy or completeness. You should conduct a careful, independent investigation of the property and verify all information. Any reliance on this information is solely at your own risk. Cushman & Wakefield U.S., Inc. and the C&W logo are service marks of Cushman & Wakefield U.S., Inc. All other marks displayed on this document are the property of their respective owners. Photos herein are the property of their respective owners. Use of these images without the express written consent of the owner is prohibited.

5,200 SF

Industrial Space For Lease



C&W - Nick Abraham

Director
nick.abraham@cushwake.com
ph +1 702 605 1620
Lic. S.00176348
6725 Via Austi Parkway
Suite 275
Las Vegas, NV 89119 USA

C&W - Greg Tassi, SIOR

Executive Managing Director
greg.tassi@cushwake.com
ph +1 702 605 1713
Lic. S.0056472
6725 Via Austi Parkway
Suite 275
Las Vegas, NV 89119 USA

Prologis - Lisa Brady

VP - Market Officer
lbrady@prologis.com
ph +1 702 891 9141
Lic. S.1002217
3883 Howard Hughes Parkway
Suite 850
Las Vegas, NV 89169 USA

Prologis - Renee Carroll

Senior Leasing Manager
rcarroll@prologis.com
ph +1 702 891 9503
3883 Howard Hughes Parkway
Suite 850
Las Vegas, NV 89169 USA

No warranty or representation, expressed or implied, is made as to the accuracy of the information contained herein, and same is submitted subject to error and omissions.

www.prologis.com

www.cushmanwakefield.com

© 2023 Cushman & Wakefield U.S., Inc. All rights reserved. This information has been obtained from sources believed reliable, but has not been verified for accuracy or completeness. You should conduct a careful, independent investigation of the property and verify all information. Any reliance on this information is solely at your own risk. Cushman & Wakefield U.S., Inc. and the C&W logo are service marks of Cushman & Wakefield U.S., Inc. All other marks displayed on this document are the property of their respective owners. Photos herein are the property of their respective owners. Use of these images without the express written consent of the owner is prohibited.