

FOR SALE

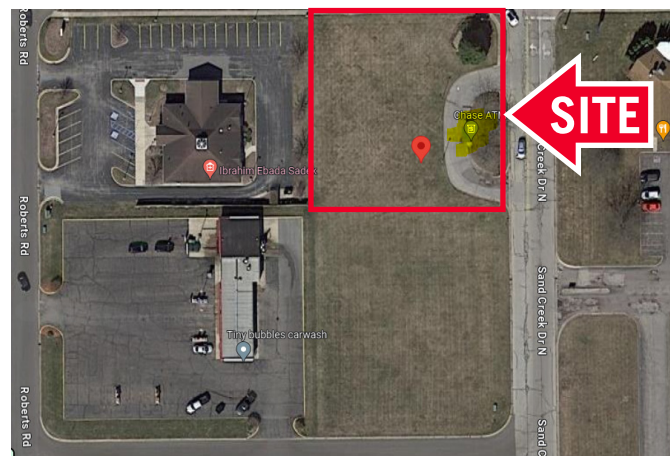
Land Near I-94 & SR 49

460 Sand Creek Drive, Chesterton



Property Highlights

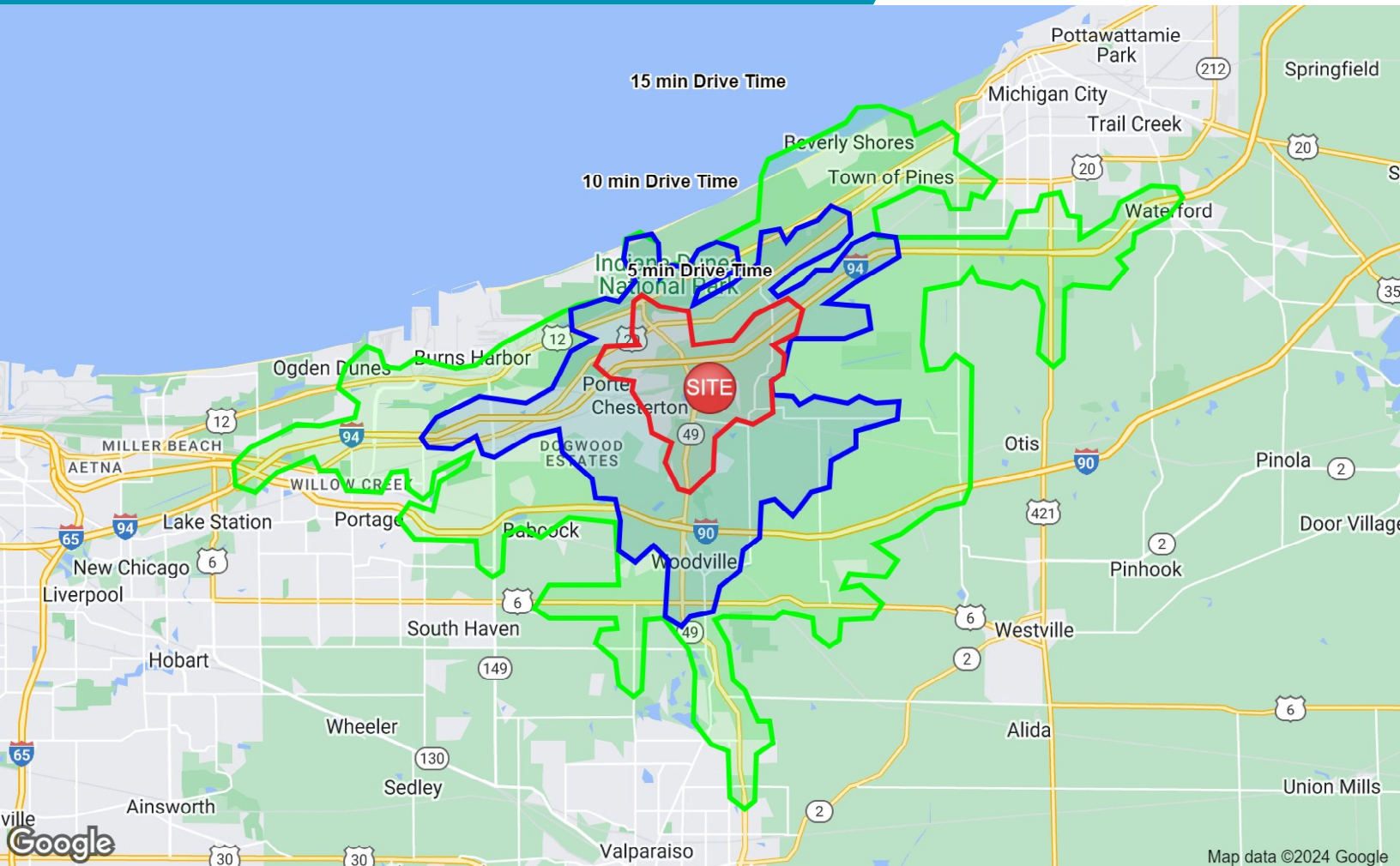
- Sale Price \$150,000
- 0.5 Acres fronting Indian Boundary Road
- Excellent visibility to Indiana Boundary Road
- High traffic count of 13,726 vehicles per day
- Zoned B-3
- Near Aldi, Jewel/Osco & Walgreens
- Franciscan Health nearby
- 1/2 mile south of SR 49 interchange for I-94



Contact

BILL FRENCH
Executive Director
+1 317 639 0430
bill.french@cushwake.com

One American Square
Suite 1800
Indianapolis, IN 46282
Main +1 317 634 6363



Demographics - 15-minute Drive Time

Population	46,213
Daytime Population	35,126
Estimated Households	18,751
Avg. Household Income	\$113,466
Median Age	41.5

Contact

BILL FRENCH
Executive Director
+1 317 639 0430
bill.french@cushwake.com

One American Square
Suite 1800
Indianapolis, IN 46282
Main +1 317 634 6363