



6,384 SF Available

FOR SALE



Property sits on 1.64 acres



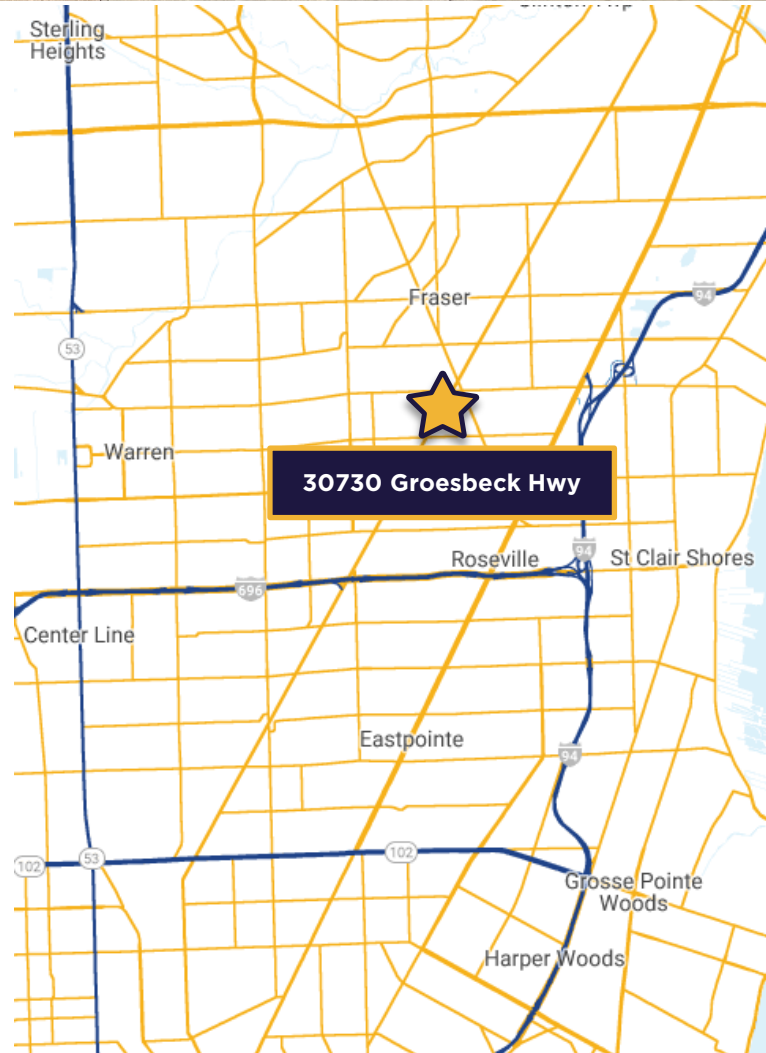
Zoning I-1: Light Industrial



Attractive building with architectural appeal



Asking price: \$



Photos



Photos



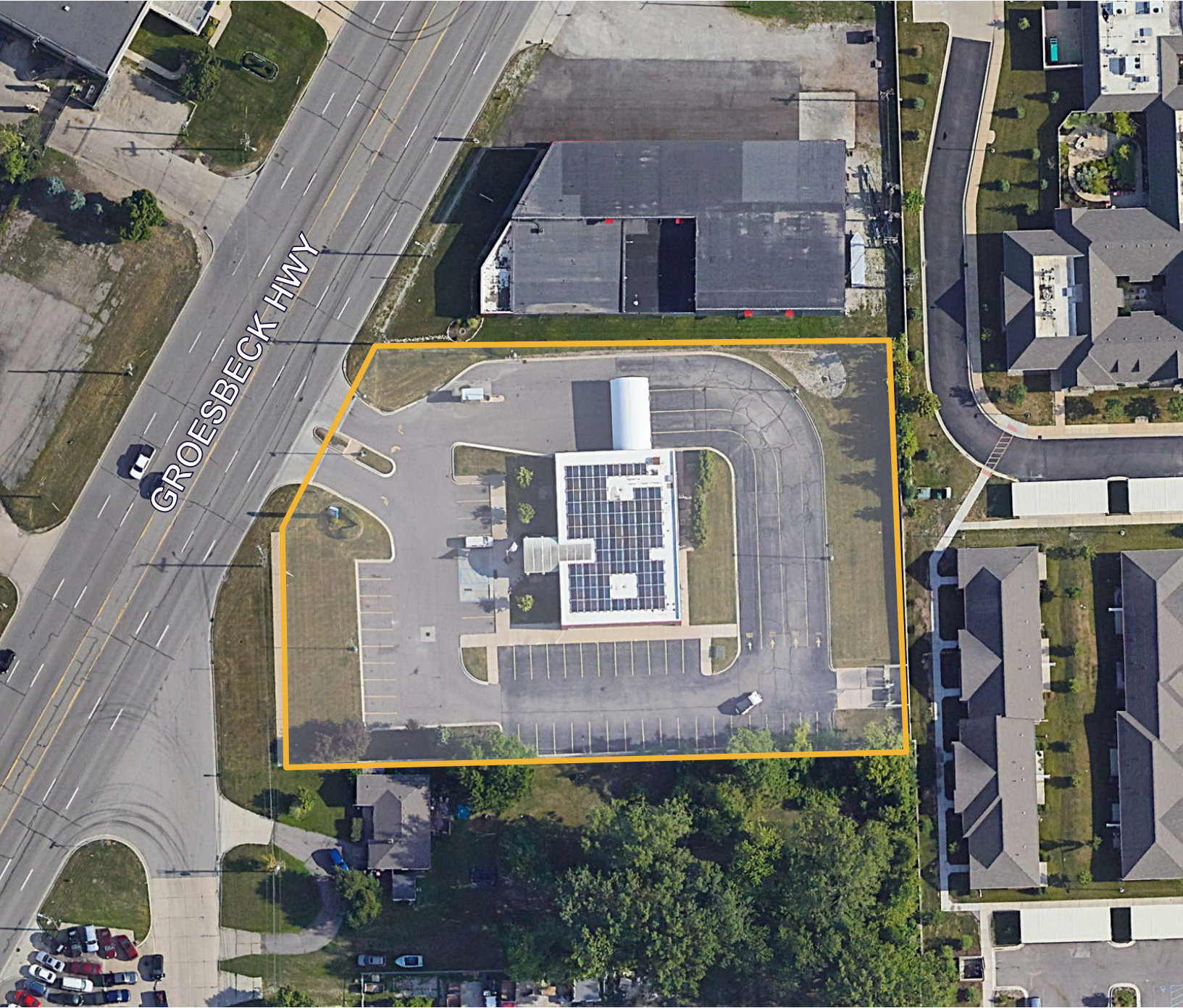


FOR SALE

30730 GROESBECK HWY

Roseville, MI 48066

Aerial



**For more information,
please contact:**

John VanNoord
Senior Associate
+1 248 358 6106
john.vannoord@cushwake.com

Garrett Keais
Executive Managing Director
+1 248 358 6112
garrett.keais@cushwake.com

©2024 Cushman & Wakefield. All rights reserved. The information contained in this communication is strictly confidential. This information has been obtained from sources believed to be reliable but has not been verified. No warranty or representation, express or implied, is made as to the condition of the property (or properties) referenced herein or as to the accuracy or completeness of the information contained herein, and same is submitted subject to errors, omissions, change of price, rental or other conditions, withdrawal without notice, and to any special listing conditions imposed by the property owner(s). Any projections, opinions or estimates are subject to uncertainty and do not signify current or future property performance.