



OKOTOKS BUSINESS PARK

OKOTOKS, AB

SEAN FERGUSON
sean.ferguson@cushwake.com

ALAN FARLEY
alan.farley@cushwake.com

INDUSTRIAL LAND FOR SALE

0.73 UP TO 2.21 ACRES



1.06
ACRES
C/S

1.15
ACRES
C/S

32 STREET SE

1.20
ACRES

0.73
ACRES

0.82
ACRES

PROPERTY DETAILS

District: Okotoks Business Park
Zoning: IBP (Industrial Business Park District)
Site Sizes: 0.73 up to 2.21 acres
Availability: Immediate

COMMENTS

- Fully serviced sites
- Master planned development
- Maximum 50% site coverage ratio
- Located within established industrial business park, situated just off 32nd Street, a main arterial road in Okotoks, and one of only 2 roadways connecting the North and South sections of the Town
- Many nearby amenities
- Development conditions apply



AVAILABLE LOTS

ADDRESS	LEGAL DESCRIPTION	SIZE	PRICE PER ACRE	ASKING PRICE
70 Fisher Place	Plan 1013120, Block 8, Lot 7	0.73 acres	\$500,000	\$365,000
74 Fisher Place	Plan 1013120, Block 8, Lot 8	1.20 acres	\$525,000	\$630,000
86 Fisher Place	Plan 1013120, Block 8, Lot 11	0.82 acres	\$500,000	\$410,000
261 Don Seaman Way - C/S	Plan 1113529, Block 7, Lot 2	1.06 acres	\$525,000	\$556,500
265 Don Seaman Way - C/S	Plan 1113529, Block 7, Lot 1	1.15 acres	\$525,000	\$603,750

ZONING

IBP (Industrial Business Park District)

Permitted Uses

Business

- Arts & Crafts
- Office

Commercial

- Entertainment Establishment
- Animal Boarding & Breeding
- Restaurant / Cafe
- Retail & Service - Large
- Pop-Up

Industrial

- Industrial - Light
- Outdoor Storage

Institutional

- Death Care
- Government
- Recreation - Active
- Recreation - Passive
- Special Events

Agriculture

- Agriculture - Urban

Other

- Public Utility
- Excavation, Stripping & Grading
- Private Utility

Discretionary Uses

Residential

- Temporary Dwelling Units

Lodging

- Short Term Lodging - Large

Commercial

- Cannabis Retail
- Retail & Service - General
- Service Station

Industrial

- Industrial - Medium
- Wash Station

Institutional

- Culture
- Education
- Human Services
- Parking Lot - Independent

Agriculture

- Agriculture - General

Other

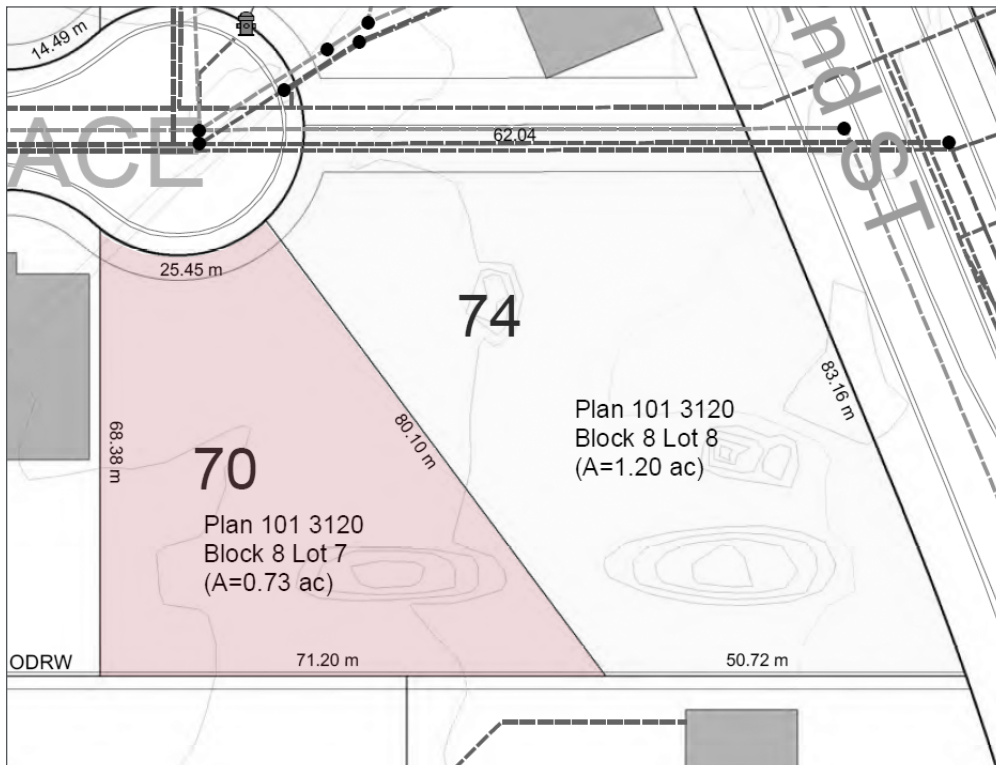
- Accessory Building or Structure



70 FISHER PLACE

OKOTOKS, AB

District: Okotoks Business Park
Legal Description: Plan 1013120, Block 8, Lot 7
Zoning: IBP (Industrial Business Park District)
Site Size: 0.73 acres
Asking Price: \$365,000
Price Per Acre: \$500,000
Availability: Immediate
Comments: Can be combined to 1.93 acres



74 FISHER PLACE

OKOTOKS, AB

District: Okotoks Business Park

Legal Description: Plan 1013120, Block 8, Lot 8

Zoning: IBP (Industrial Business Park District)

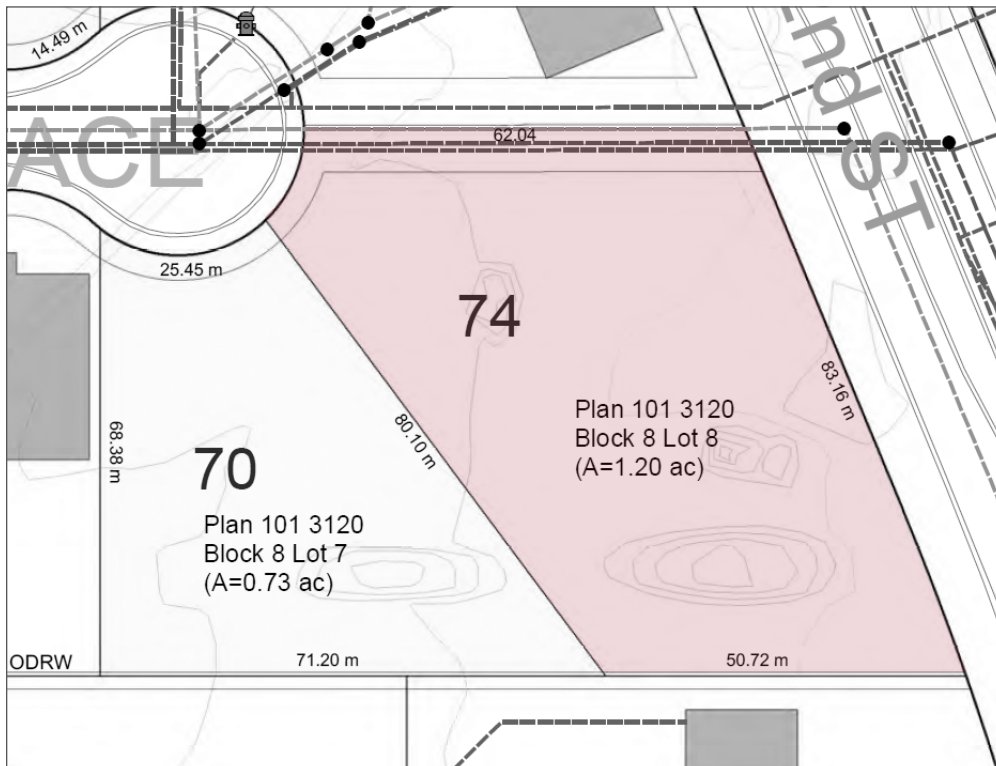
Site Size: 1.20 acres

Asking Price: \$630,000

Price Per Acre: \$525,000

Availability: Immediate

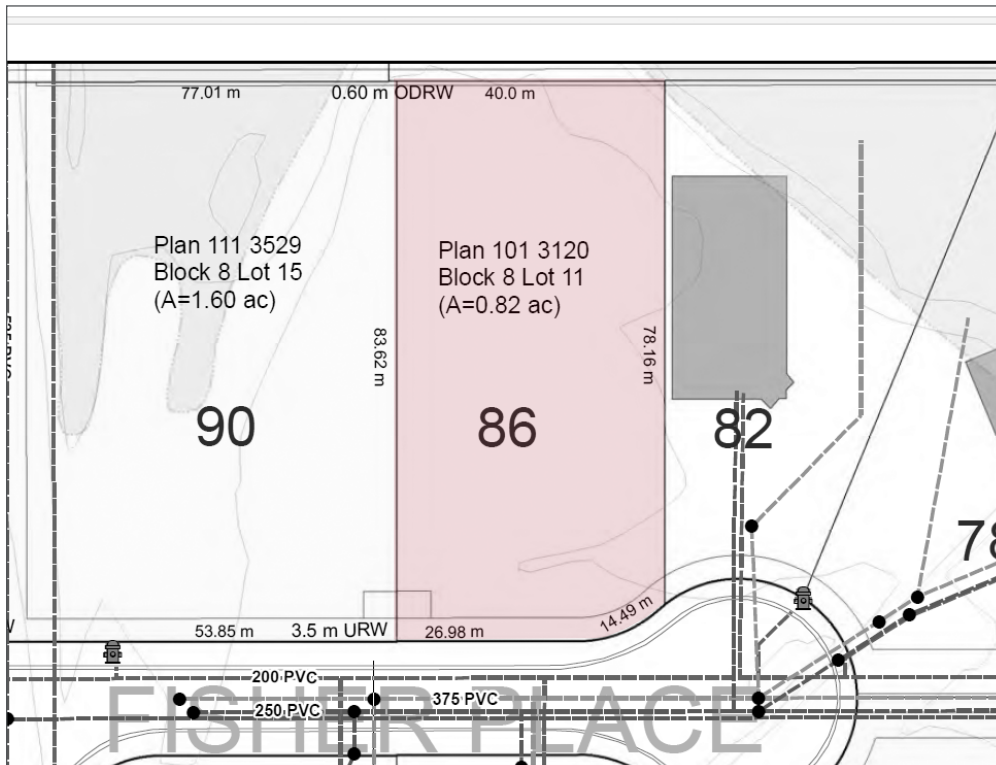
Comments: Can be combined to 1.93 acres



86 FISHER PLACE

OKOTOKS, AB

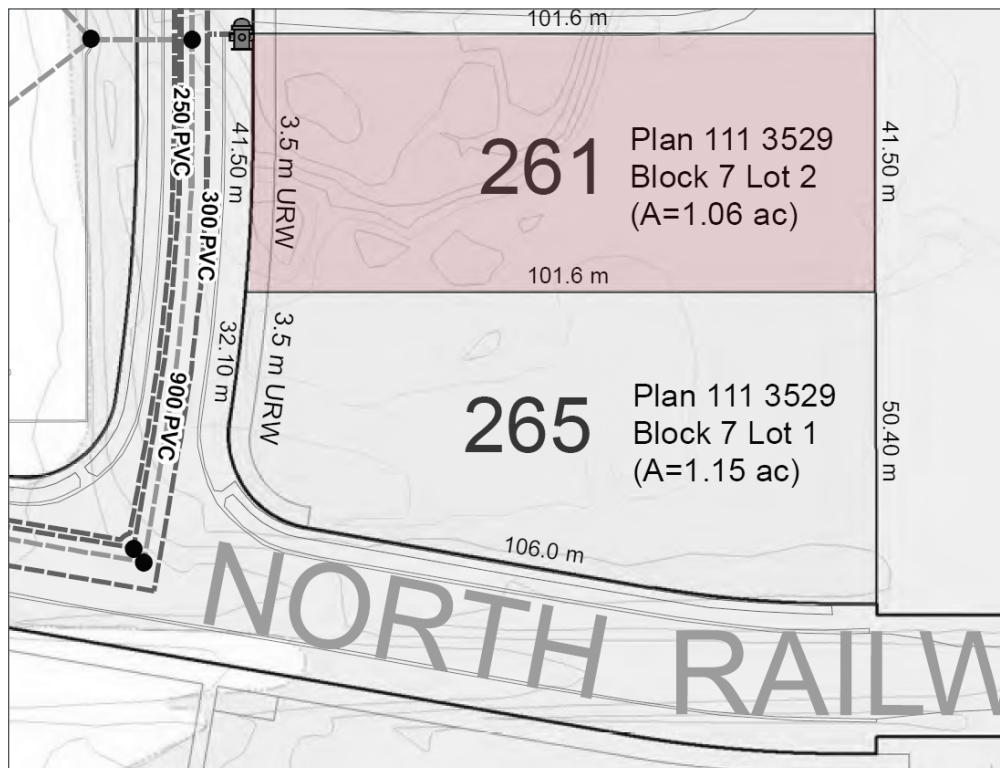
District: Okotoks Business Park
Legal Description: Plan 1013120, Block 8, Lot 11
Zoning: IBP (Industrial Business Park District)
Site Size: 0.82 acres
Asking Price: \$410,000
Price Per Acre: \$500,000
Availability: Immediate



261 DON SEAMAN WAY

OKOTOKS, AB

District: Okotoks Business Park
Legal Description: Plan 1113529, Block 7, Lot 2
Zoning: IBP (Industrial Business Park District)
Site Size: 1.06 acres
Asking Price: \$556,500
Price Per Acre: \$525,000
Availability: Conditionally sold



265 DON SEAMAN WAY

OKOTOKS, AB

District: Okotoks Business Park

Legal Description: Plan 1113529, Block 7, Lot 1

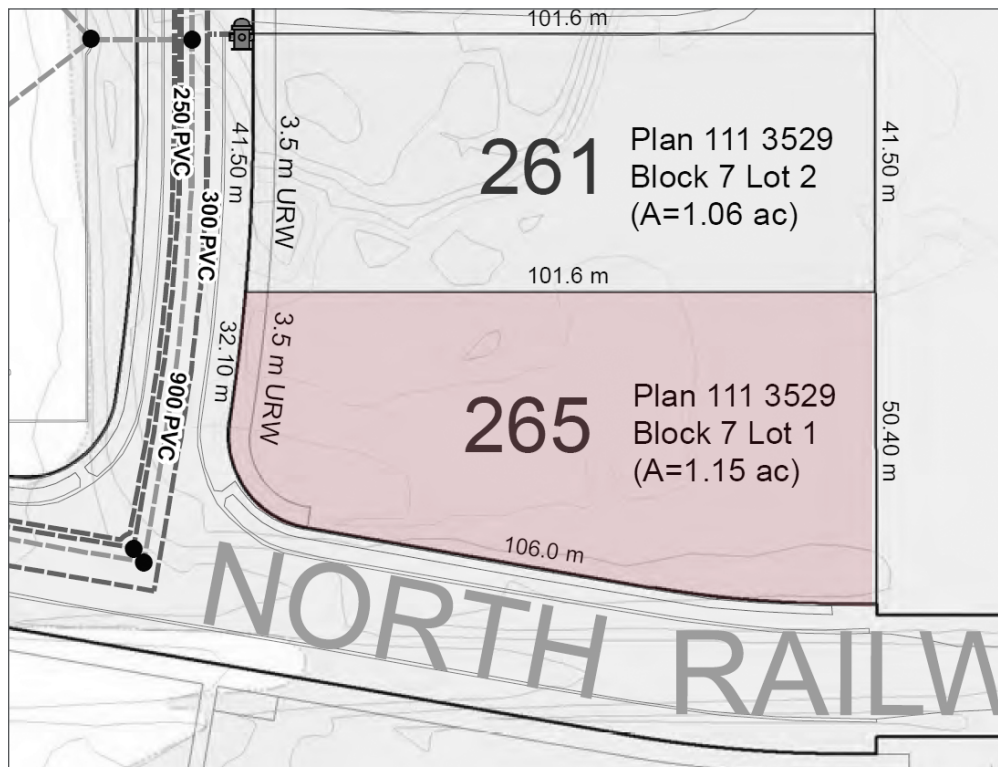
Zoning: IBP (Industrial Business Park District)

Site Size: 1.15 acres

Asking Price: \$603,750

Price Per Acre: \$525,000

Availability: Conditionally sold





SEAN FERGUSON
Associate Vice President
403 261 1114
sean.ferguson@cushwake.com

ALAN FARLEY
Associate Vice President
403 261 1144
alan.farley@cushwake.com

Cushman & Wakefield ULC
Bow Valley Square IV
250 - 6th Ave SW, Suite 2400
Calgary, AB T2P 3H7
cushmanwakefield.com

©2024 Cushman & Wakefield ULC. All rights reserved. The information contained in this communication is strictly confidential. This information has been obtained from sources believed to be reliable but has not been verified. NO WARRANTY OR REPRESENTATION, EXPRESS OR IMPLIED, IS MADE AS TO THE CONDITION OF THE PROPERTY (OR PROPERTIES) REFERENCED HEREIN OR AS TO THE ACCURACY OR COMPLETENESS OF THE INFORMATION CONTAINED HEREIN, AND SAME IS SUBMITTED SUBJECT TO ERRORS, OMISSIONS, CHANGE OF PRICE, RENTAL OR OTHER CONDITIONS, WITHDRAWAL WITHOUT NOTICE, AND TO ANY SPECIAL LISTING CONDITIONS IMPOSED BY THE PROPERTY OWNER(S). ANY PROJECTIONS, OPINIONS OR ESTIMATES ARE SUBJECT TO UNCERTAINTY AND DO NOT SIGNIFY CURRENT OR FUTURE PROPERTY PERFORMANCE.

