



FOR LEASE
2800 14th Avenue, Markham
Office opportunity in the Heart of Markham



LOCATION

Woodbine Avenue and Fourteenth Avenue

AVAILABLE SPACE

Suite 103	1,596 SF
Suite 303	1,055 SF
Suite 305	1,895 SF
Suite 404	2,400 SF
Suite 303 and 305	2,950 SF

NET RENT

\$10.00 PSF

ADDITIONAL RENT

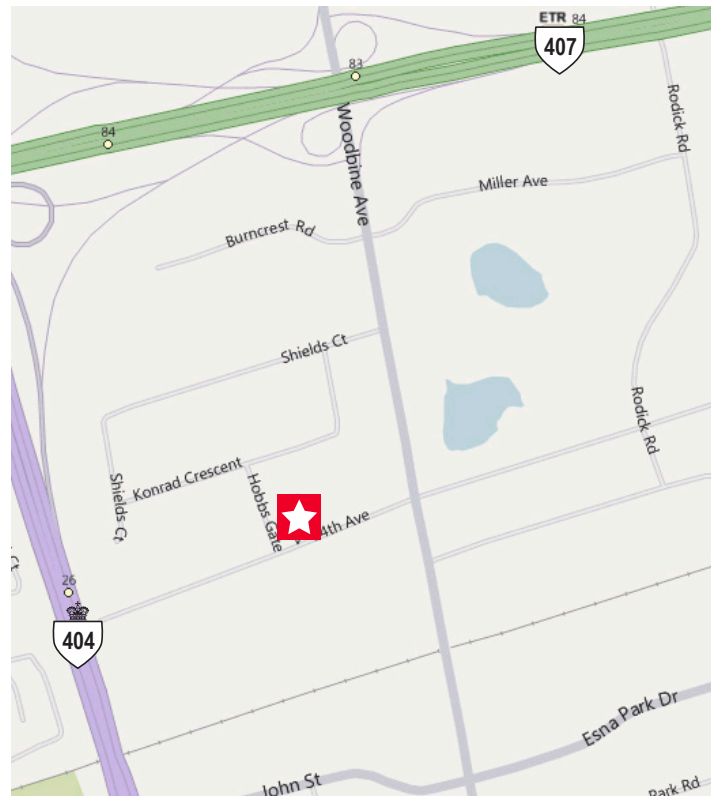
\$15.00 PSF

PARKING

Underground and surface parking available

HIGHLIGHTS

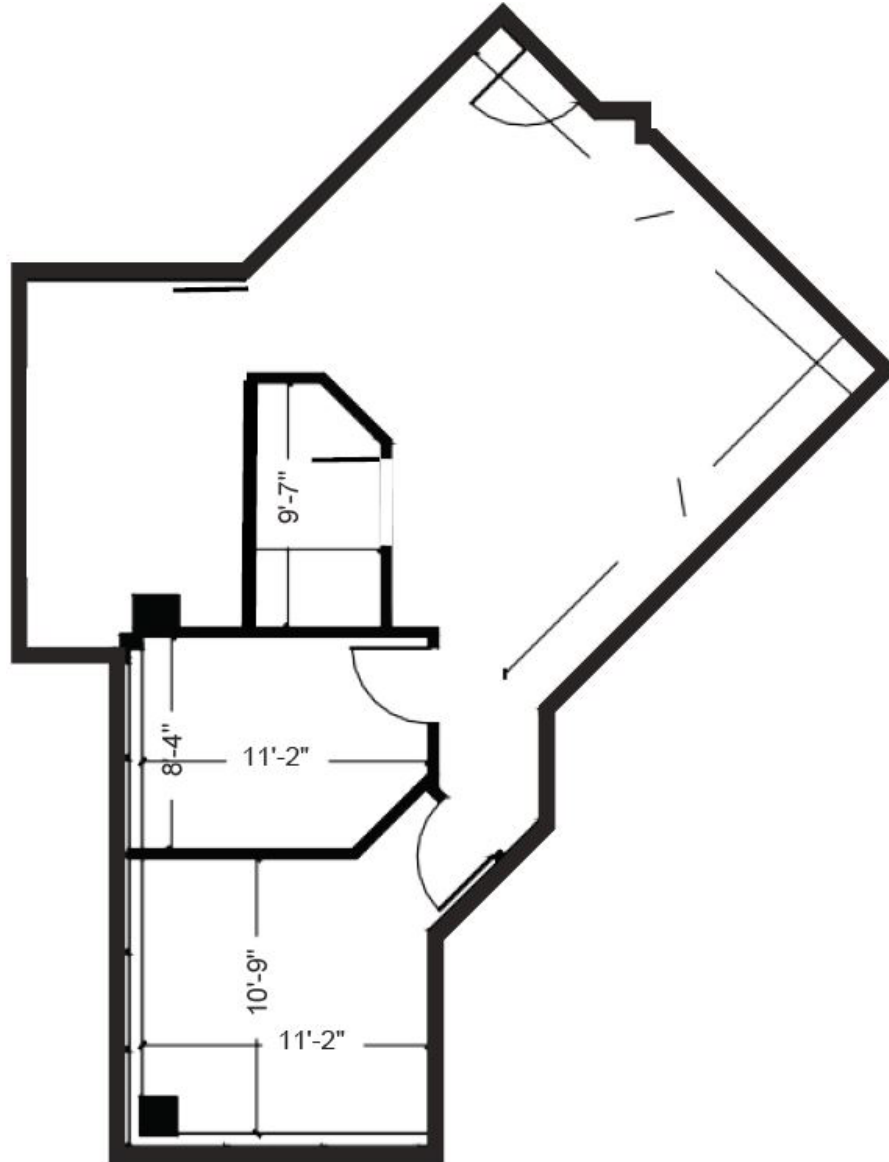
- Newly renovated suite
- 18 workstations are available for plug and play
- Fibre optics network
- Free underground & surface parking available
- Boardroom available for tenant's use
- Easy access to Highway 407 and Highway 404



Zarko Stojanovic
Broker
Mobile: 416 219 0716
Direct: 416 756 5440
zarko.stojanovic@cushwake.com

Cushman & Wakefield ULC, Brokerage
3100 Steeles Avenue East
Suite 1100
Markham, ON
L3R 8T3

Suite 303 1,055 SF

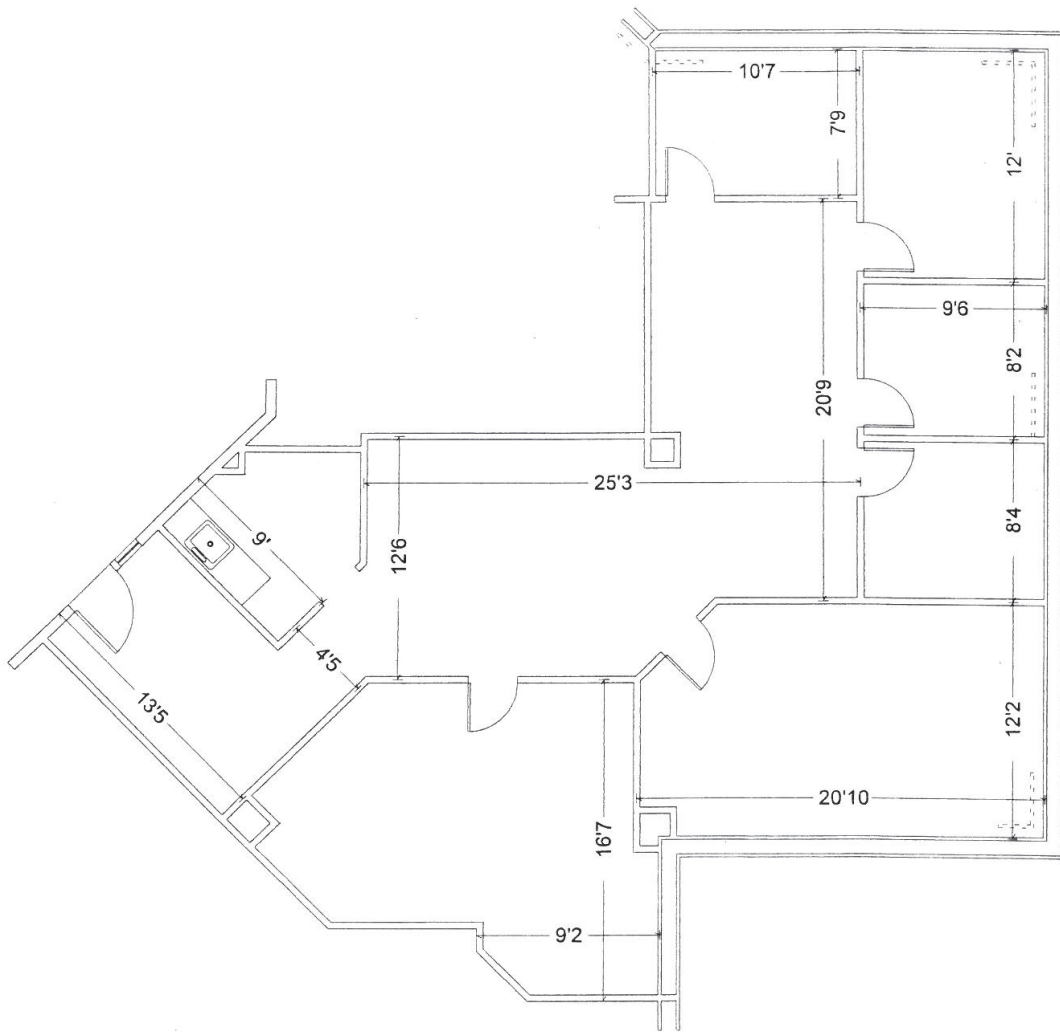


Zarko Stojanovic
Broker
Mobile: 416 219 0716
Direct: 416 756 5440
zarko.stojanovic@cushwake.com

Cushman & Wakefield ULC, Brokerage
3100 Steeles Avenue East
Suite 1100
Markham, ON L3R 8T3

Suite 305

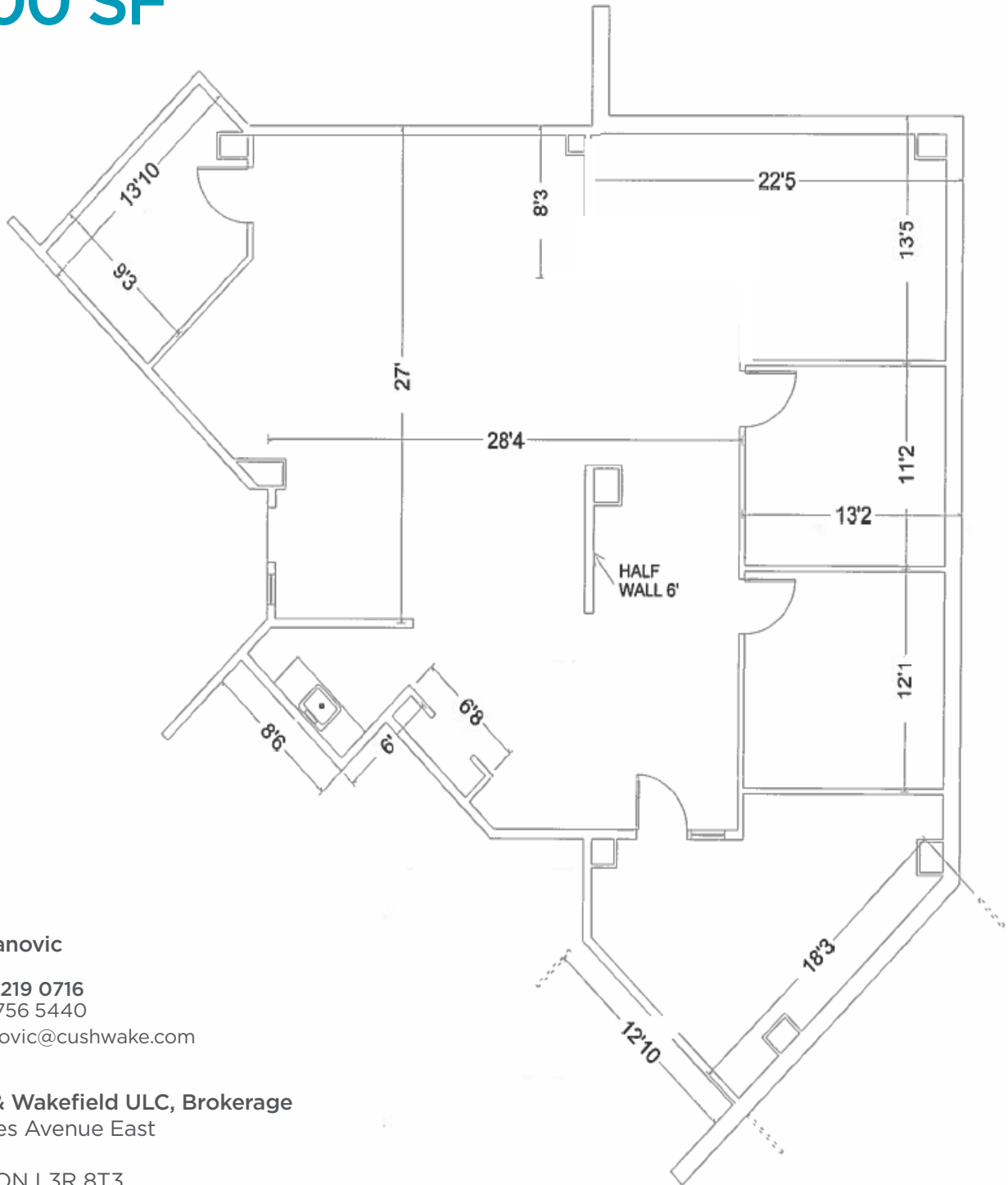
1,895 SF



Zarko Stojanovic
Broker
Mobile: 416 219 0716
Direct: 416 756 5440
zarko.stojanovic@cushwake.com

Cushman & Wakefield ULC, Brokerage
3100 Steeles Avenue East
Suite 1100
Markham, ON L3R 8T3

Suite 404 2,400 SF



Zarko Stojanovic
Broker
Mobile: 416 219 0716
Direct: 416 756 5440
zarko.stojanovic@cushwake.com

Cushman & Wakefield ULC, Brokerage
3100 Steeles Avenue East
Suite 1100
Markham, ON L3R 8T3