

55

MADISON AVENUE

NOMAD  
SOUTHEAST CORNER OF 27TH STREET  
[51MADISONAVE.COM](http://51MADISONAVE.COM)



EXCLUSIVE LEASING AGENT:  
**CUSHMAN & WAKEFIELD**



55

MADISON AVENUE  
FLOOR PLANS

**GROUND FLOOR**

GROUND 1	<b>5,176 SF</b>
GROUND 2	<b>172 SF</b>
GROUND 3	<b>438 SF</b>
GROUND 4	<b>2,967 SF</b>
TOTAL	<b>8,753 SF</b>

**MEZZANINE**

PARTIAL	<b>7,652 SF</b>
FULL FLOOR	<b>11,947 SF</b>

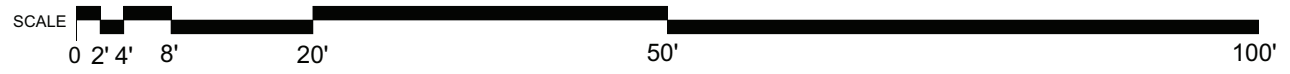
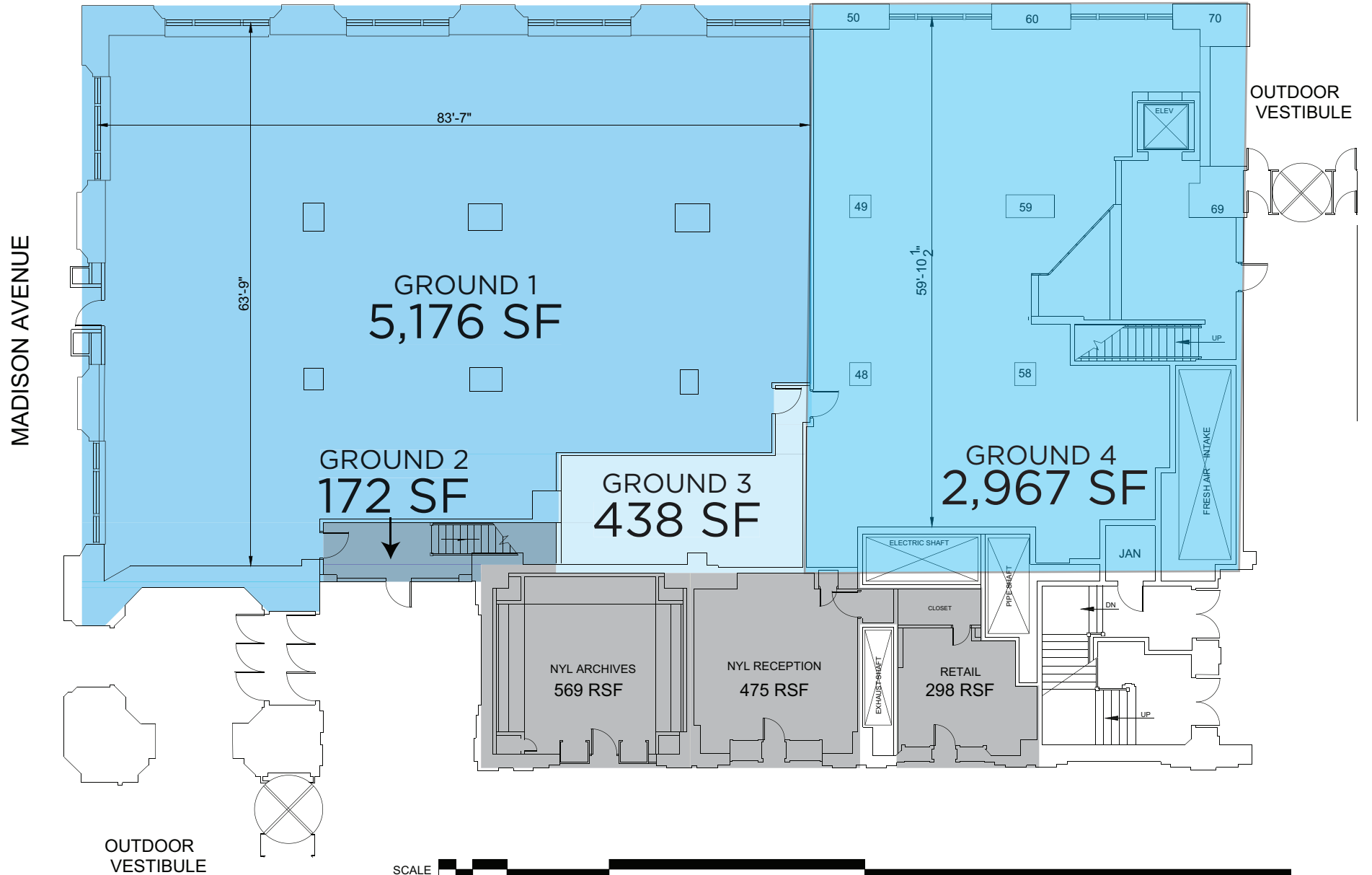
**FRONTAGE**

50' ON MADISON AVENUE  
60' ON 27TH STREET (APPROX.)

**COMMENTS**

- Option to remove a portion of the mezzanine to create double ceiling height (28')
- Loading docks located on 27th Street

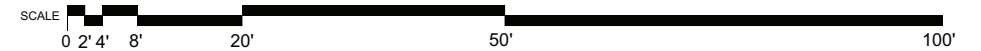
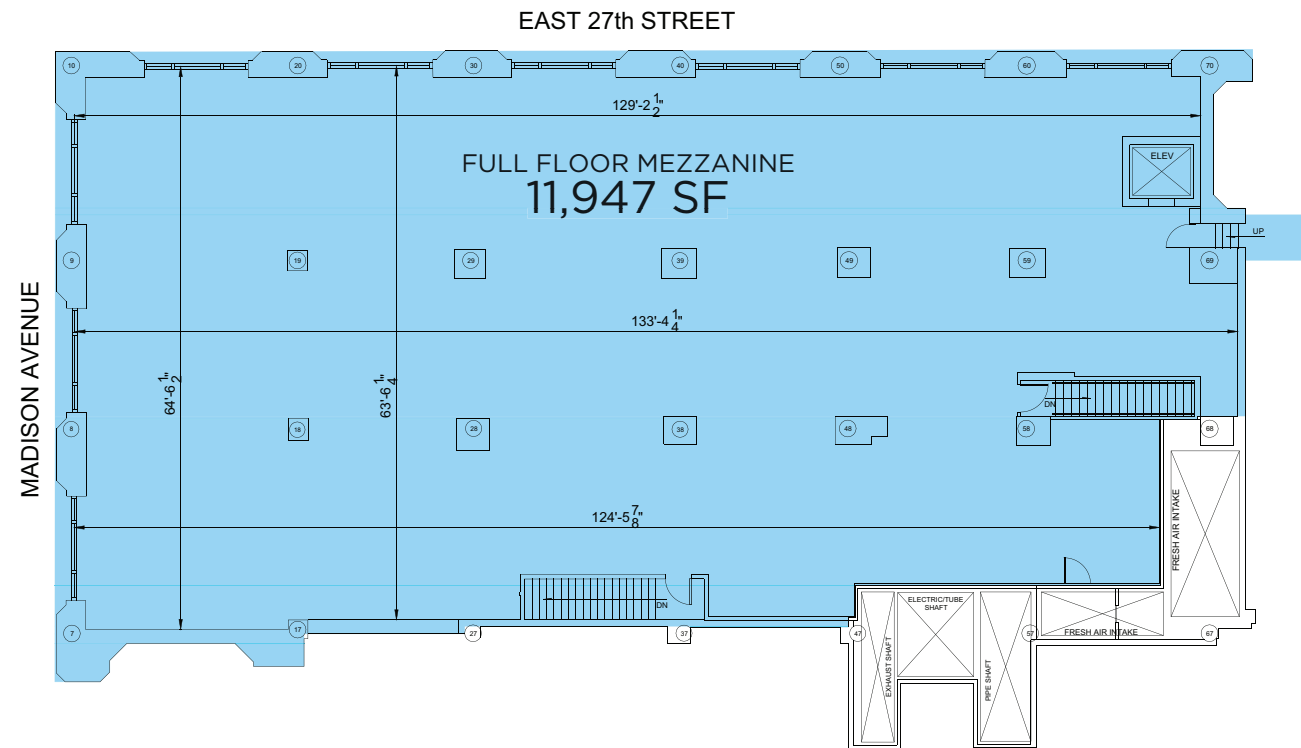
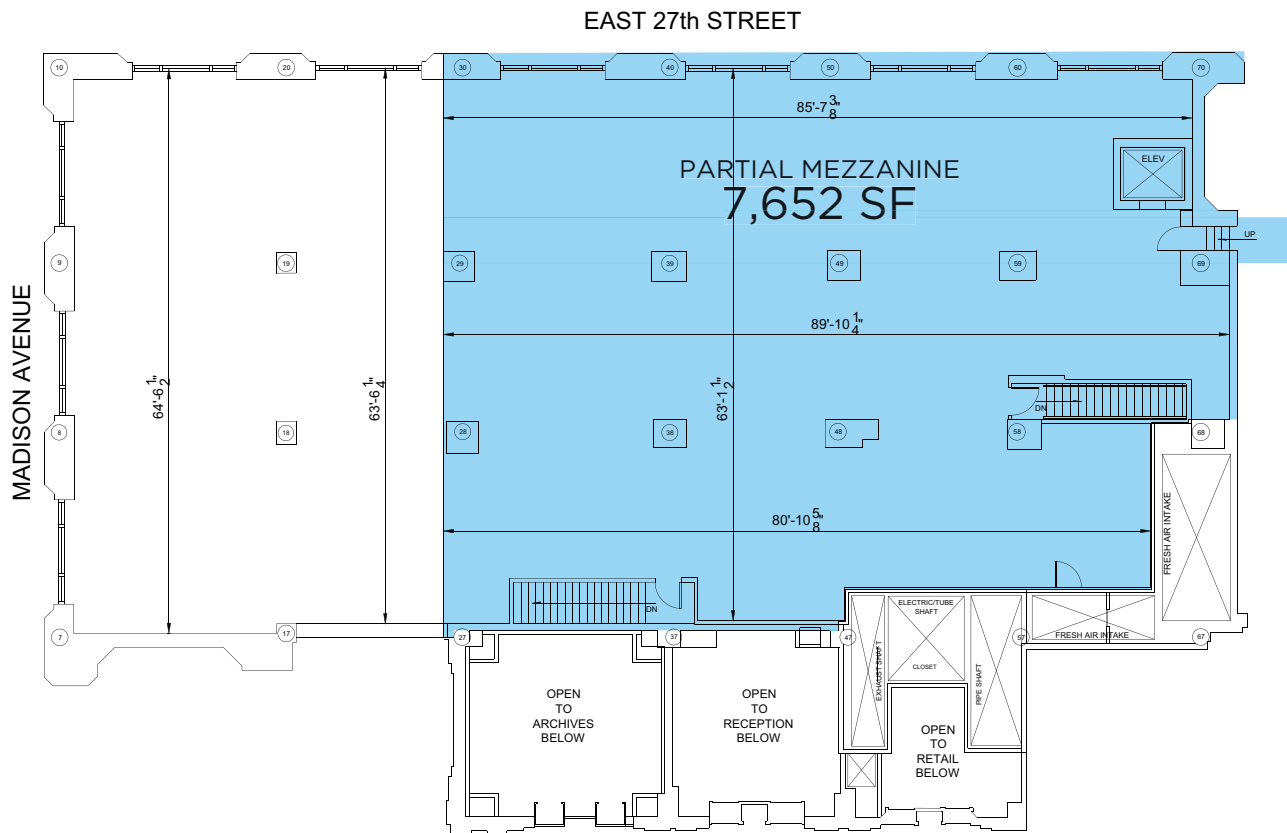
EAST 27th STREET



55

MADISON AVENUE  
FLOOR PLANS

MEZZANINE









**55**

**MADISON AVENUE**

**51MADISONAVE.COM**

EXCLUSIVE LEASING AGENT:



**CUSHMAN &  
WAKEFIELD**

**ANDREW KAHN**

**+1 212.841.7732**

**andrew.kahn@cushwake.com**

**www.CushmanWakefield.com**

**FANNY FAN**

**+1 212.589.5122**

**fanny.fan@cushwake.com**