

## Tour Virtually

[CLICK HERE FOR  
VIRTUAL TOUR](#)



1075 Peachtree Street NE

**1075 PEACHTREE**

SUITE 2125: 4,022 RSF

# SPACE HIGHLIGHTS

- High-End Open Breakroom
- Collaboration Space
- Dedicated Storage Room and IT Room



## ABOUT THE BUILDING

12th & Midtown located at 1075 Peachtree St. consists of a 725,000-sf class A office tower, approximately 60,000-sf of retail space and the 414 Room Loews Atlanta Hotel topped with 52 residences. This is where Atlanta's 14-block, one-million-square foot Midtown Mile defines itself with flagship retail opportunities, signature residences, luxury hotels, and elegant office towers. 1075 Peachtree is Fitwell certified and LEED Gold & Energy Star rated.

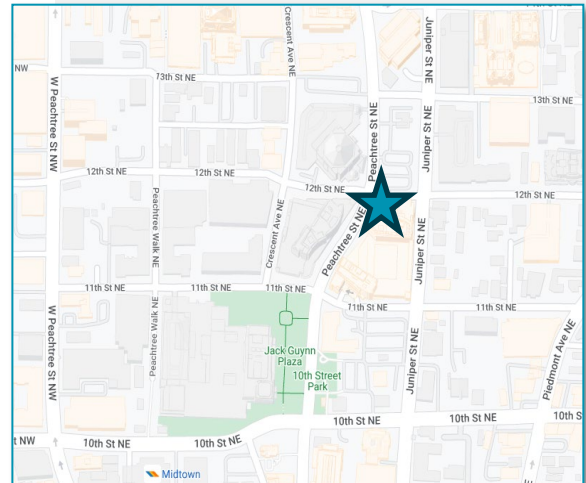
### Features

**Available Space:** 4,022 RSF

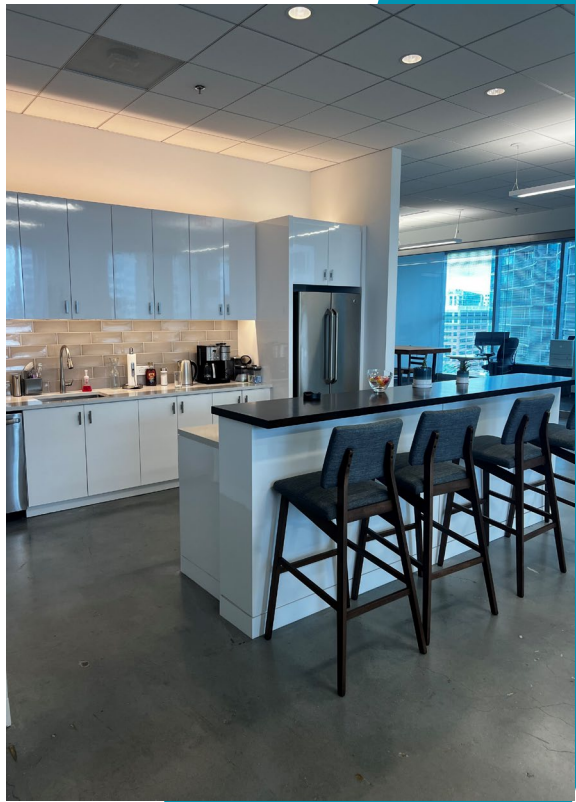
**Term:** Through 4/30/2028

**Rental Rate:** Negotiable

**Furniture:** Included

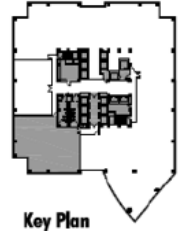
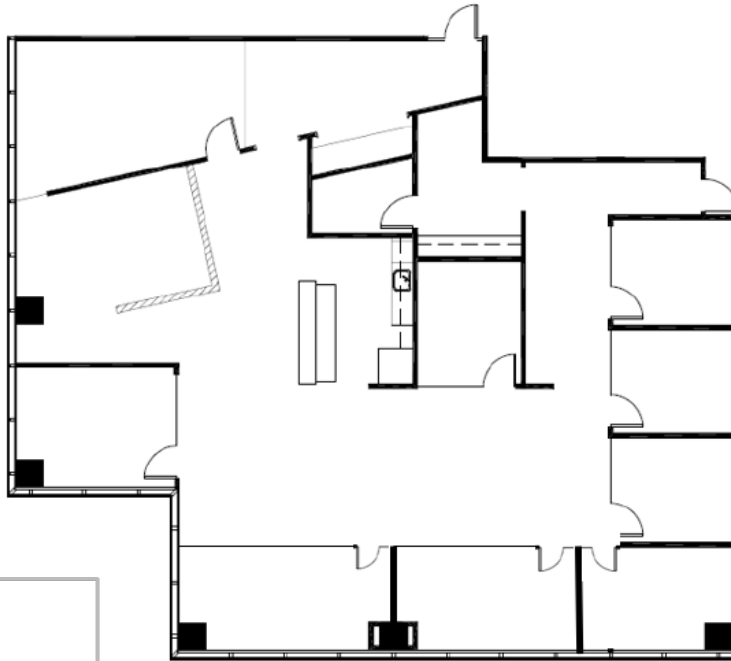


# SUITE PHOTOS





# FLOOR PLAN



Key Plan

- Offices: 8
- Conference Room:  
Seats up to 8
- High end Breakroom
- Collaboration Space
- Storage Room
- IT Room

## CONTACT

**JON MAYESKE**  
Executive Director  
(404) 853 5265  
jon.mayeske@cushwake.com

**ANNIE LEWIS GOMEZ**  
Director  
(404) 682 3412  
annie.lewis@cushwake.com