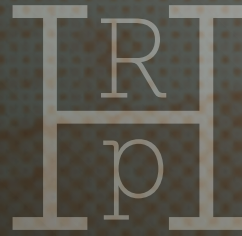


FOR LEASE



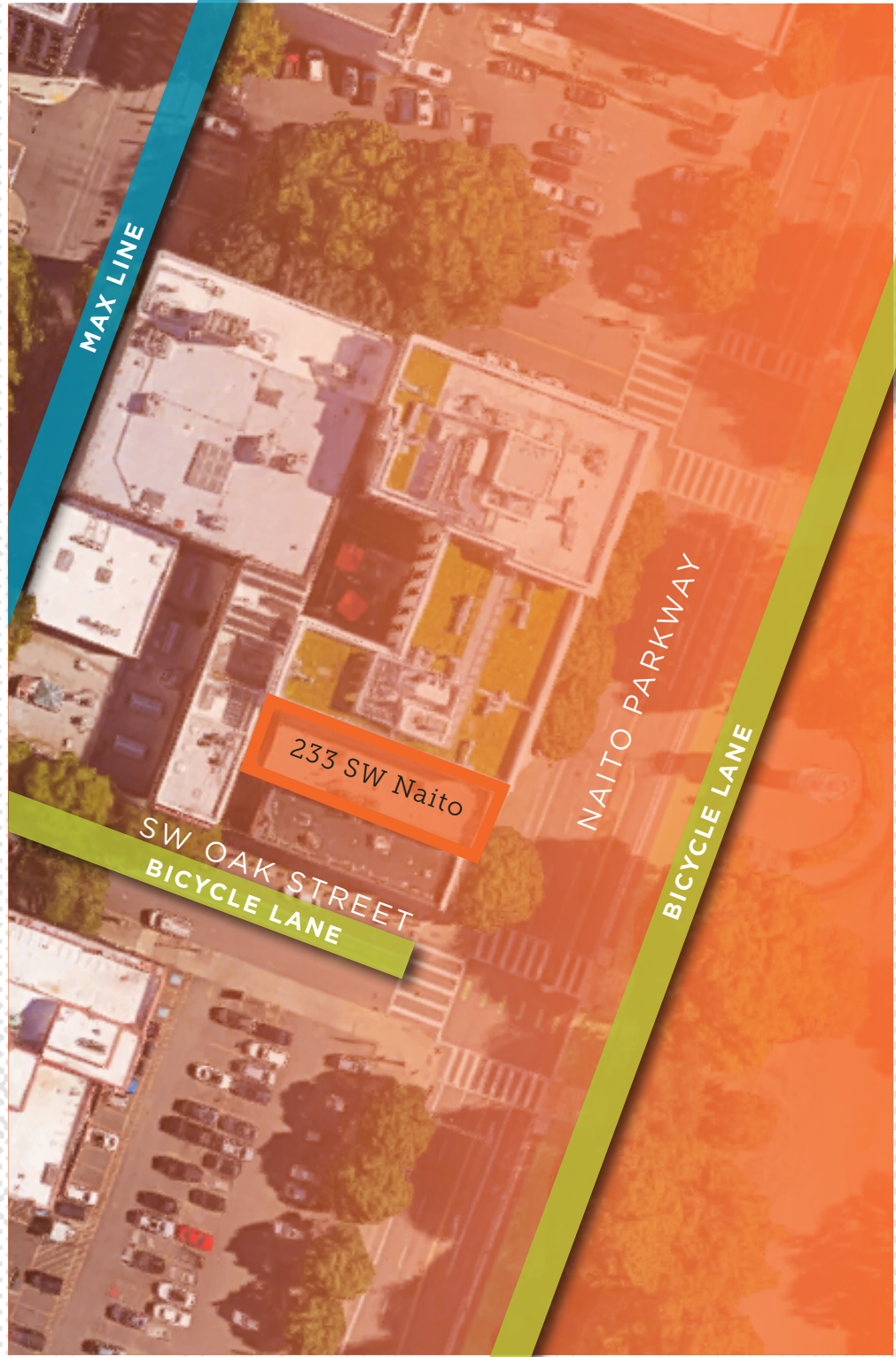
Russell Historic Portfolio

Leasing availabilities in:
233 SW NAITO

RICH HISTORY MODERN OPPORTUNITY



Prime Location

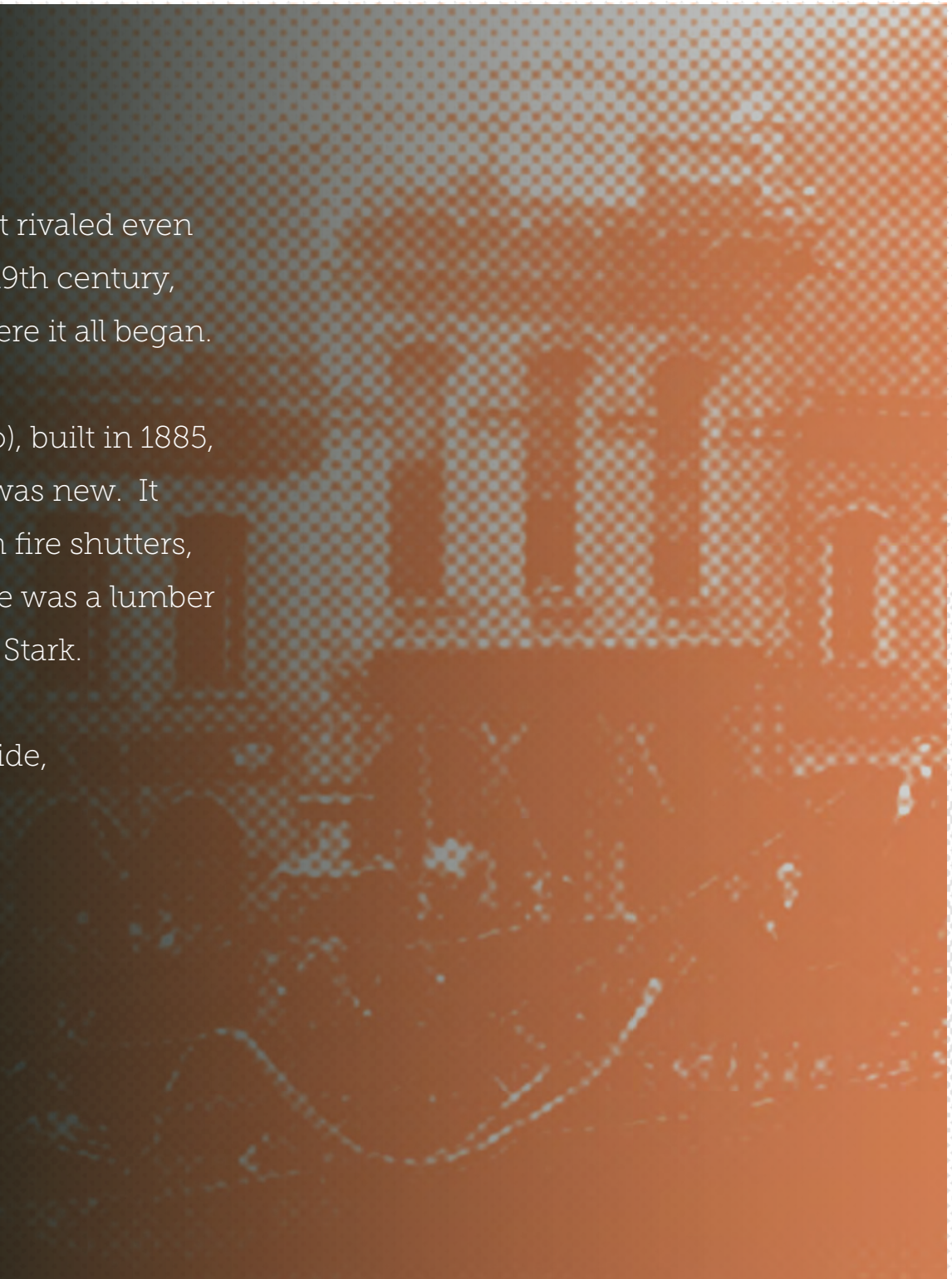


History

Portland was a boom town that rivaled even Chicago in the last half of the 19th century, and this history building is where it all began.

The Fechheimer (233 SW Naito), built in 1885, was remarkable even when it was new. It was built of brick with cast iron fire shutters, at great cost, even though there was a lumber mill a block away at the foot of Stark.

This building was built with pride, and it remains so today.



233 S.W. Naito



Fechheimer Building

233 SW NAITO PKWY.
PORTLAND, OR 97204

233 Naito is adaptable. In recent years it's been the home of the firm that designed the Oregon Zoo expansion; it was the slightly-illegal elegant home of a young couple of web designers; and most recently it was the first home of a company that has become an important part of Verizon. Its intricate facade rivals the facades Manhattan's SoHo district.

AVAILABLE -4,450 SF ON FIRST FLOOR + MEZZANINE

YEAR BUILT 1885

HIGHLIGHTS

- MOVE-IN READY
- SEISMICALLY UPDATED
- SHOWER AND RESTROOMS

LEASE RATE \$27.50 MODIFIED GROSS

 Launch Virtual Tour

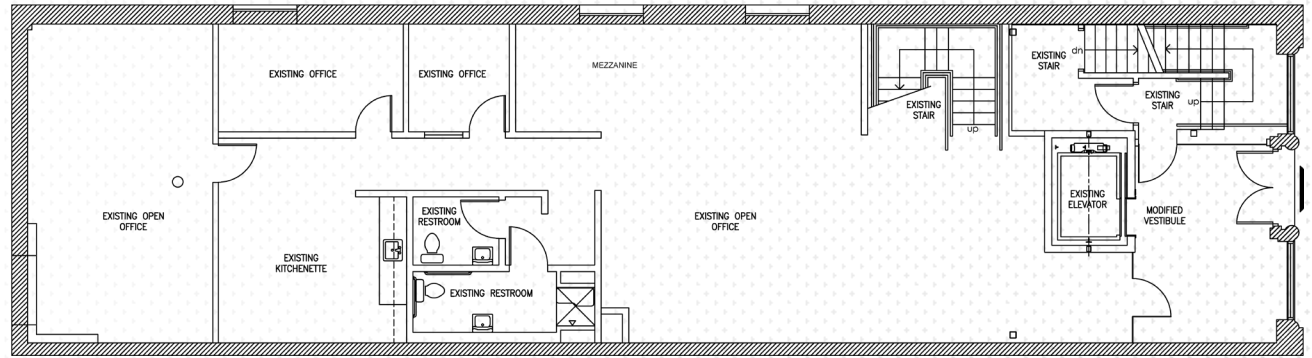


“ The Fechheimer Building was built in 1885 and features cast-iron by Willamette Iron Works. It is adjacent to the Hallock–McMillan Building. In 1975, it was listed as a “primary landmark” in the National Register of Historic Places (NRHP) nomination of the Portland Skidmore/Old Town Historic District.”

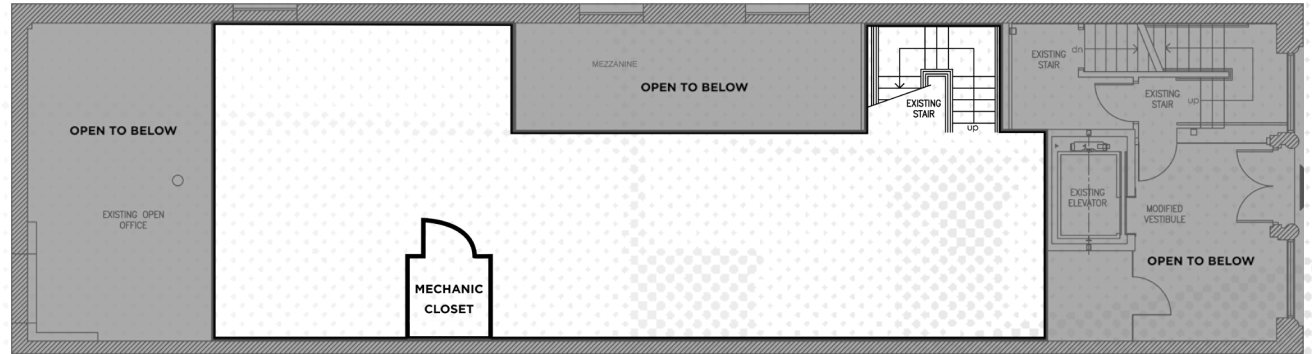
233 S.W. Naito



FIRST FLOOR



MEZZANINE



TOM USHER

ph | 503.279.1777
tom.usher@cushwake.com

KAI FUHRMANN

ph | 503.279.1724
kai.fuhrmann@cushwake.com



Cushman & Wakefield
200 SW Market Street
Suite 200
Portland, OR 97201



cushmanwakefield.com

