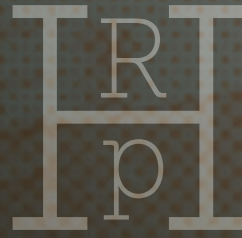


FOR LEASE



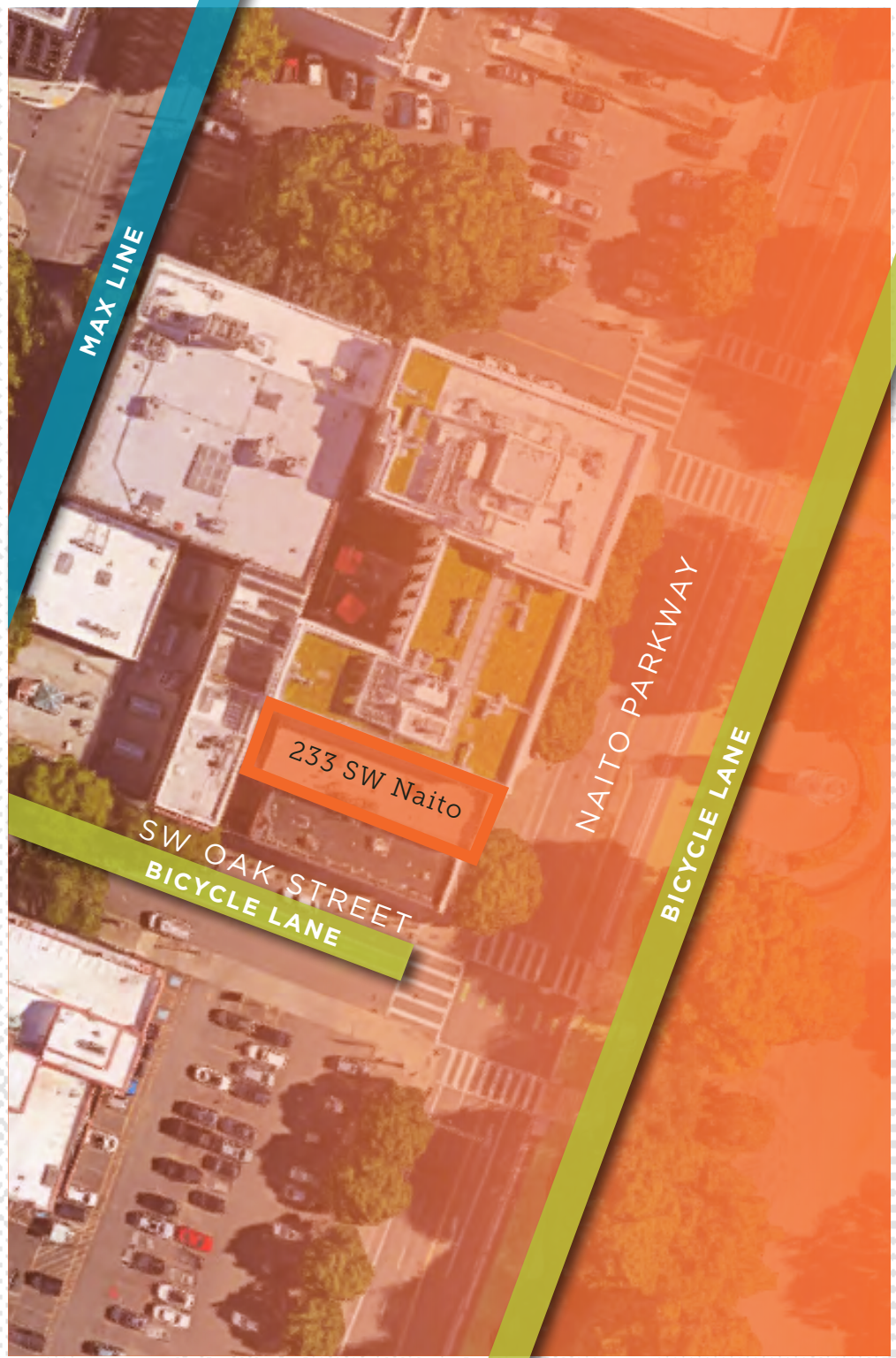
## Russell Historic Portfolio

Leasing availabilities in:  
233 SW NAITO

RICH HISTORY MODERN OPPORTUNITY



Prime Location

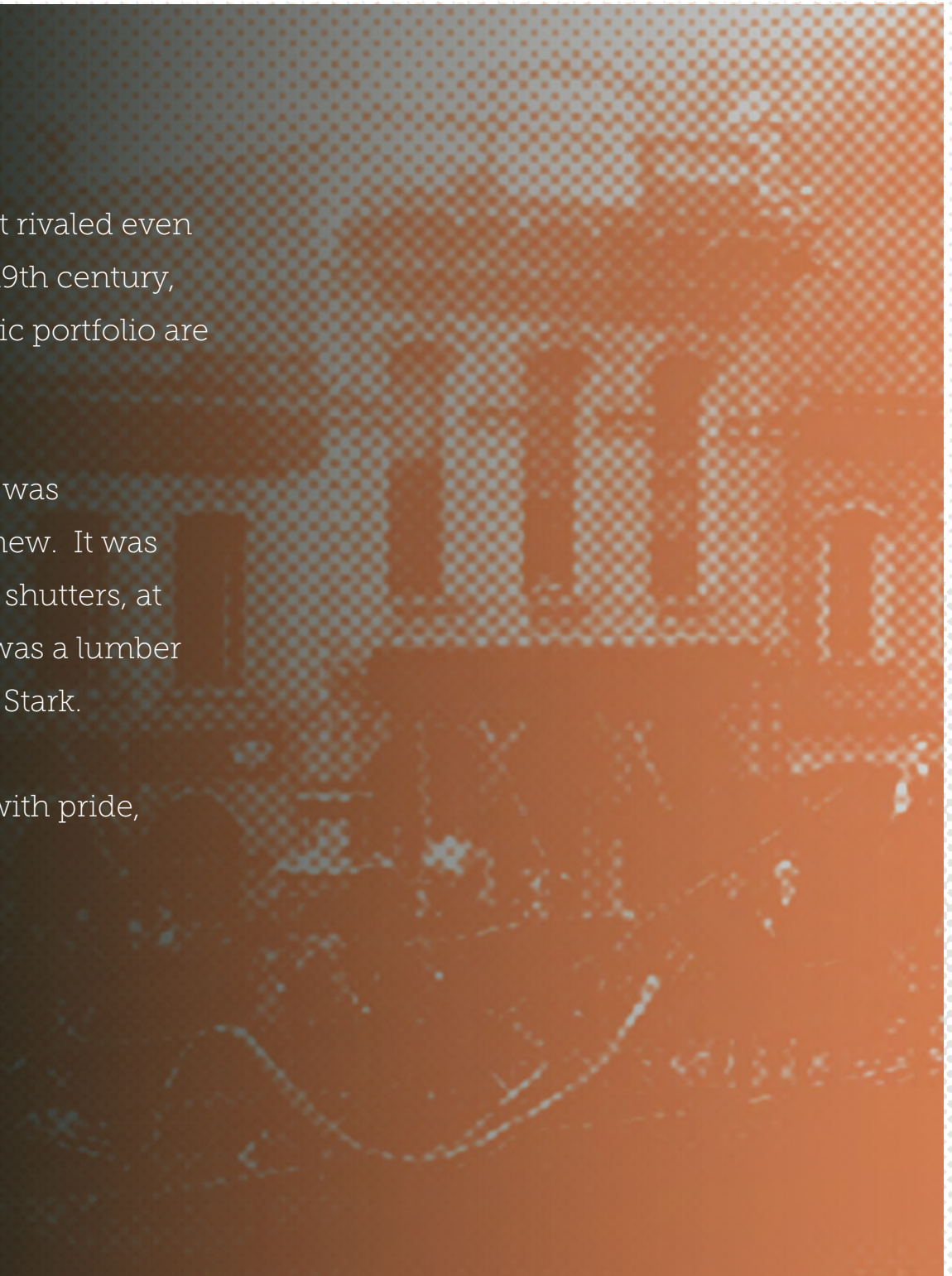


# History

Portland was a boom town that rivaled even Chicago in the last half of the 19th century, and the buildings in this historic portfolio are where it all began.

The Fechheimer, built in 1885, was remarkable even when it was new. It was built of brick with cast iron fire shutters, at great cost, even though there was a lumber mill a block away at the foot of Stark.

These buildings were all built with pride, and they remain so today.



233 S.W. Naito



## Fechheimer Building

233 SW NAITO PKWY.  
PORTLAND, OR 97204

233 Naito is adaptable. In recent years it's been the home of the firm that designed the Oregon Zoo expansion; it was the slightly-illegal elegant home of a young couple of web designers; and most recently it was the first home of a company that has become an important part of Verizon. Its intricate facade rivals the facades Manhattan's SoHo district.

---

**AVAILABLE** 4,554 SQUARE FEET  
ON FIRST FLOOR

---

**YEAR BUILT** 1885

---

**HIGHLIGHTS**

- MOVE-IN READY
- SEISMICALLY UPDATED
- SHOWER AND RESTROOMS
- ELEVATOR SERVED

---

**LEASE RATE** \$27.50 MODIFIED GROSS

---



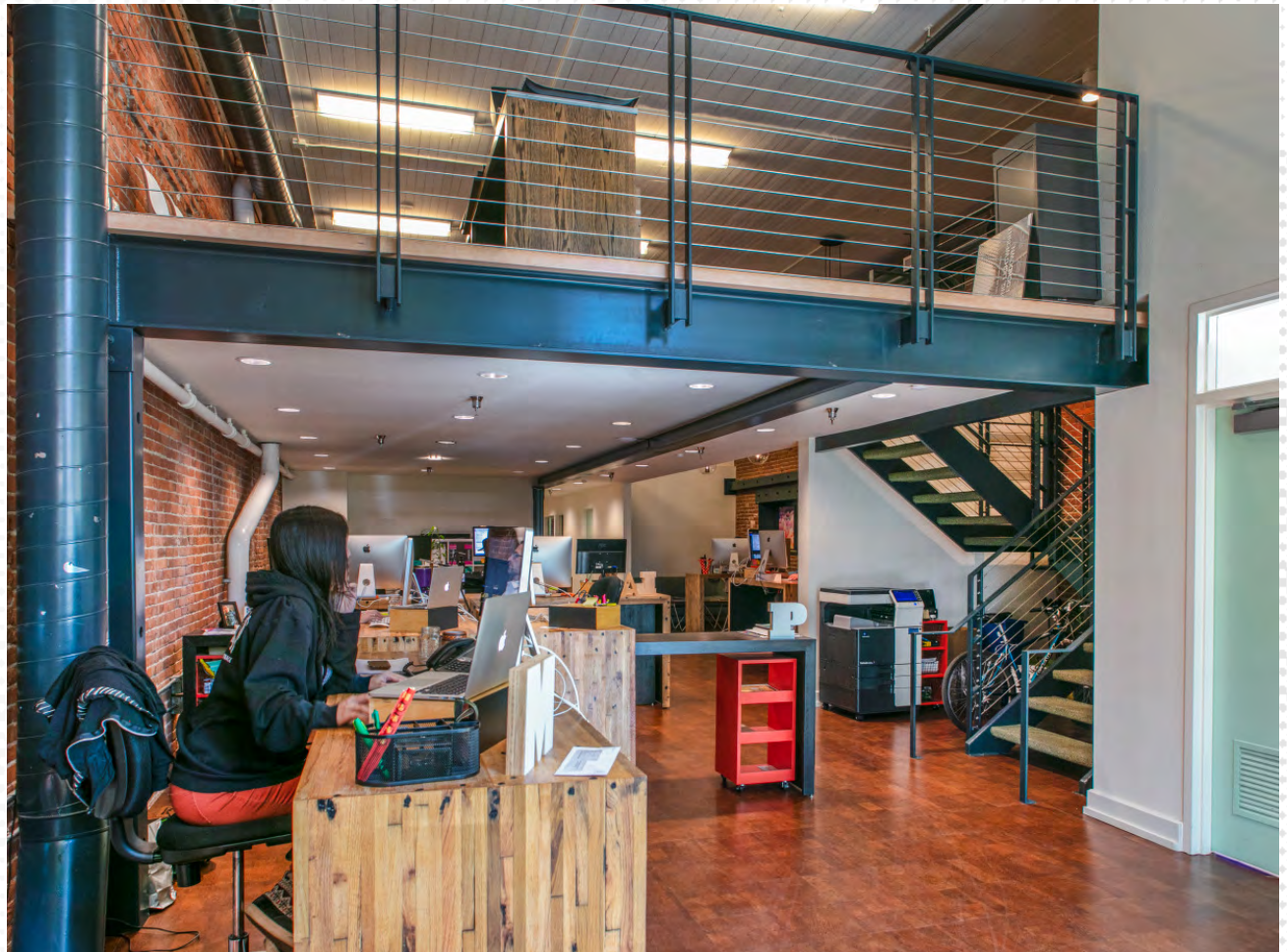
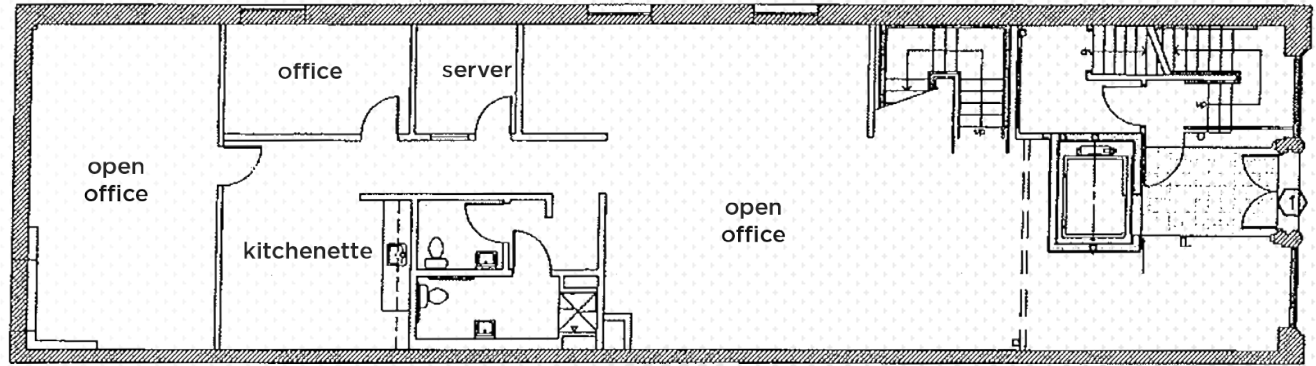
“ The Fechheimer Building was built in 1885 and features cast-iron by Willamette Iron Works. It is adjacent to the Hallock–McMillan Building. In 1975, it was listed as a “primary landmark” in the National Register of Historic Places (NRHP) nomination of the Portland Skidmore/Old Town Historic District.”

 Launch Virtual Tour

233 S.W. Naito



FIRST FLOOR



**TOM USHER**

Lic. #780301841  
ph | 503.279.1777  
tom.usher@cushwake.com

**GRANT GUERNSEY**

Lic. # 201230551  
ph | 503.407.4982  
grant.guernsey@kidder.com

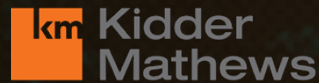


Cushman & Wakefield  
200 SW Market Street  
Suite 200  
Portland, OR 97201

Kidder Mathews  
101 SW Main St  
Suite 1200  
Portland, OR 97204



[cushmanwakefield.com](http://cushmanwakefield.com)



[kidder.com](http://kidder.com)

