



**+/- 15,000 SF AVAILABLE FOR LEASE
(ON THE 4TH / TOP FLOOR)**

Property Highlights

- +/-60,000 SF Class A Office Building
- +/-15,000 SF Available For Lease on the 4th floor (top floor)
- Located in the heart of Friendly Shopping Center
- Built in 2007
- Full floor with dedicated elevator access
- Windowed offices with ample natural light
- Flexible layout to meet both private office and workstation requirements
- Abundant, Free parking
- Excellent signage opportunities

Ryan Gioffre

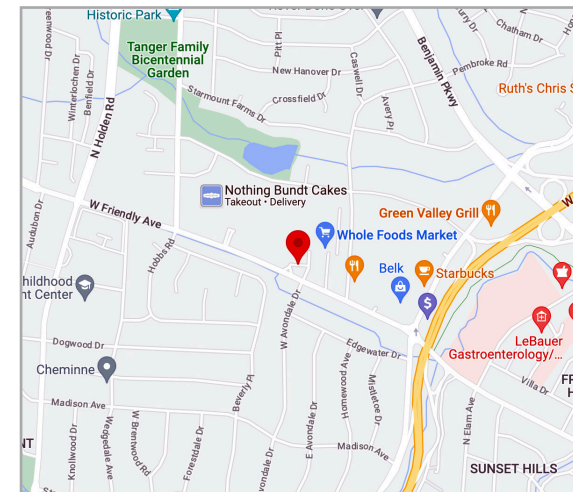
Director
+1 336 821 3822
ryan.gioffre@cushwake.com

Bobby Finch

Executive Managing Director
+1 336 812 3303
bobby.finch@cushwake.com

William Woltz

Executive Managing Director
+1 336 821 3824
william.woltz@cushwake.com



SURROUNDING AMENITIES / BUSINESSES



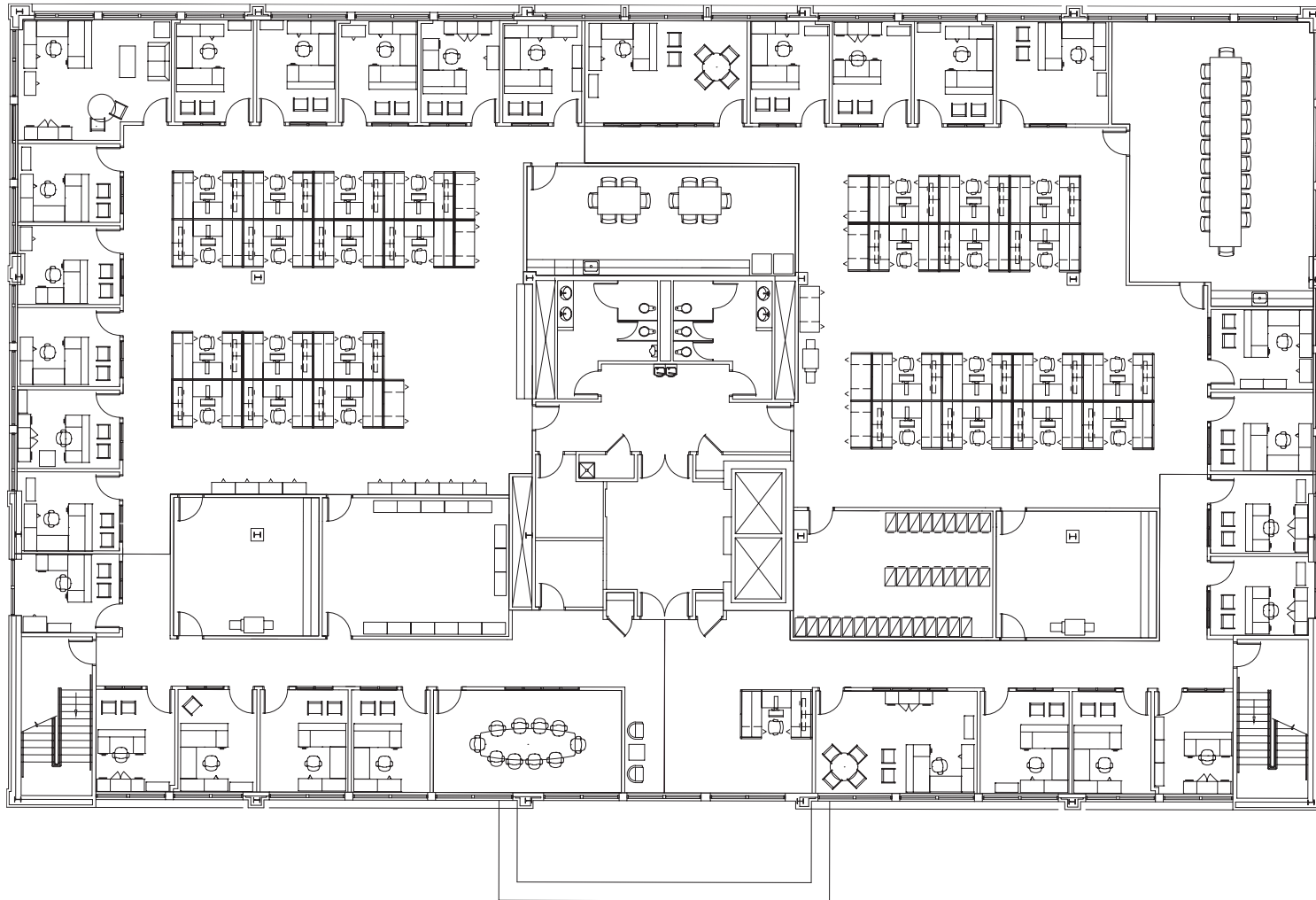
Ryan Gioffre
Director
+1 336 821 3822
ryan.gioffre@cushwake.com

Bobby Finch
Executive Managing Director
+1 336 812 3303
bobby.finch@cushwake.com

William Woltz
Executive Managing Director
+1 336 821 3824
william.woltz@cushwake.com

628 Green Valley Road, Ste. 202
Greensboro, NC 27408
Main +1 336 668 9999
Fax +1 336 668 0888
cushmanwakefield.com

4TH FLOOR AVAILABILITY: +/-15,000 SF



Ryan Gioffre
Director
+1 336 821 3822
ryan.gioffre@cushwake.com

Bobby Finch
Executive Managing Director
+1 336 812 3303
bobby.finch@cushwake.com

William Woltz
Executive Managing Director
+1 336 821 3824
william.woltz@cushwake.com

628 Green Valley Road, Ste. 202
Greensboro, NC 27408
Main +1 336 668 9999
Fax +1 336 668 0888
cushmanwakefield.com



Ryan Gioffre
Director
+1 336 821 3822
ryan.gioffre@cushwake.com

Bobby Finch
Executive Managing Director
+1 336 812 3303
bobby.finch@cushwake.com

William Woltz
Executive Managing Director
+1 336 821 3824
william.woltz@cushwake.com

628 Green Valley Road, Ste. 202
Greensboro, NC 27408
Main +1 336 668 9999
Fax +1 336 668 0888
cushmanwakefield.com