

FOR SUBLEASE

# 1622 Corporate Circle

Petaluma, CA 94954



## ±9,163 RSF

MIX OF CREATIVE OFFICE  
AND WAREHOUSE

**Brian Foster**  
Executive Director  
+1 415 451 2437  
brian.foster@cushwake.com  
Lic #: 01393059

**Steven Leonard**  
Managing Director  
+1 415 722 1080  
steven.leonard@cushwake.com  
Lic #: 00909604

**Trevor Buck**  
Executive Managing Director  
+1 415 451 2436  
trevor.buck@cushwake.com  
Lic #: 01255462



# PROPERTY HIGHLIGHTS



## APPROXIMATE SIZE

±9,163 RSF



## SUBLEASE TERM

THROUGH 5/31/2026



## LEASE RATE

\$1.25 PSF NNN



## AVAILABLE

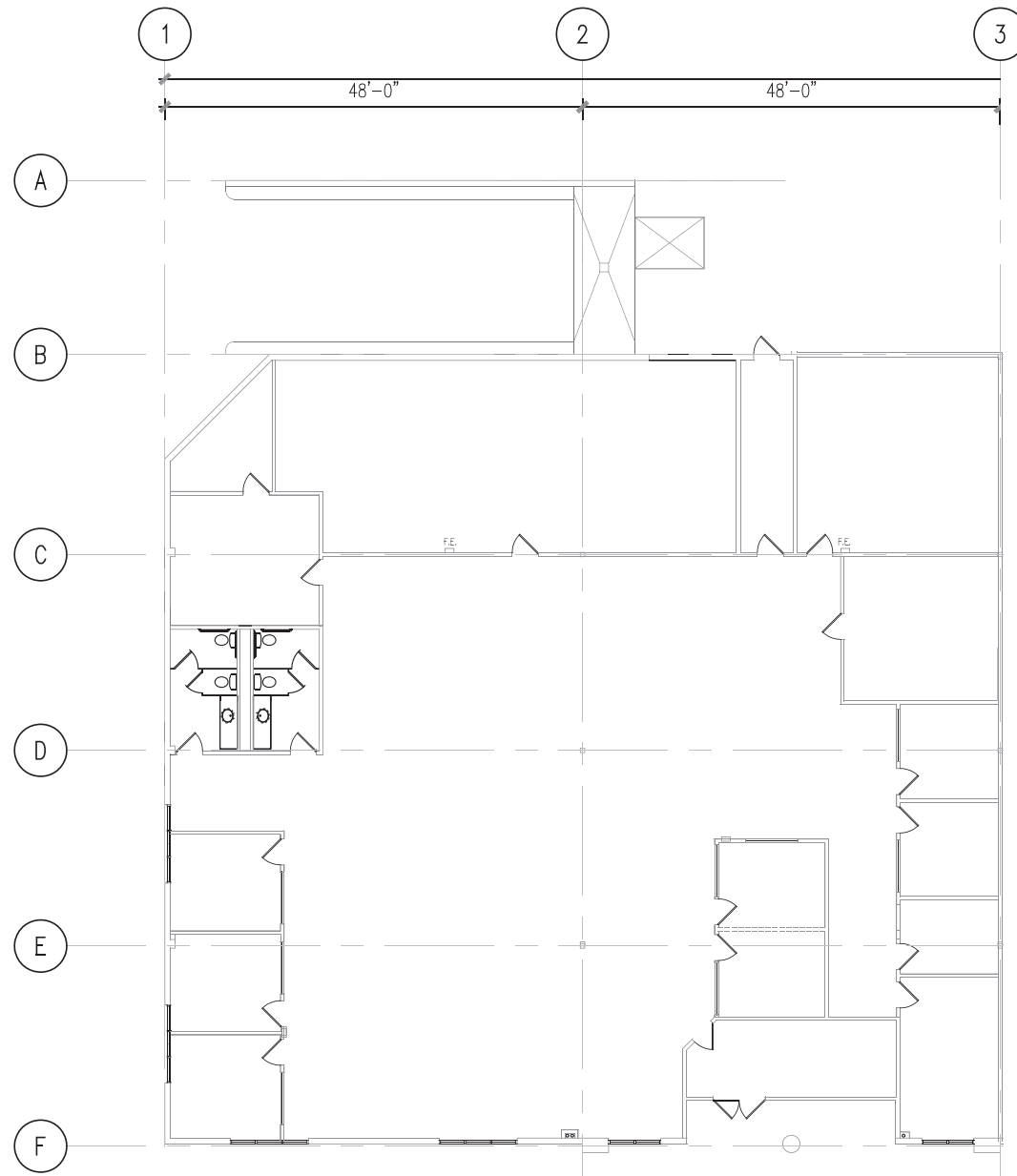
NOW



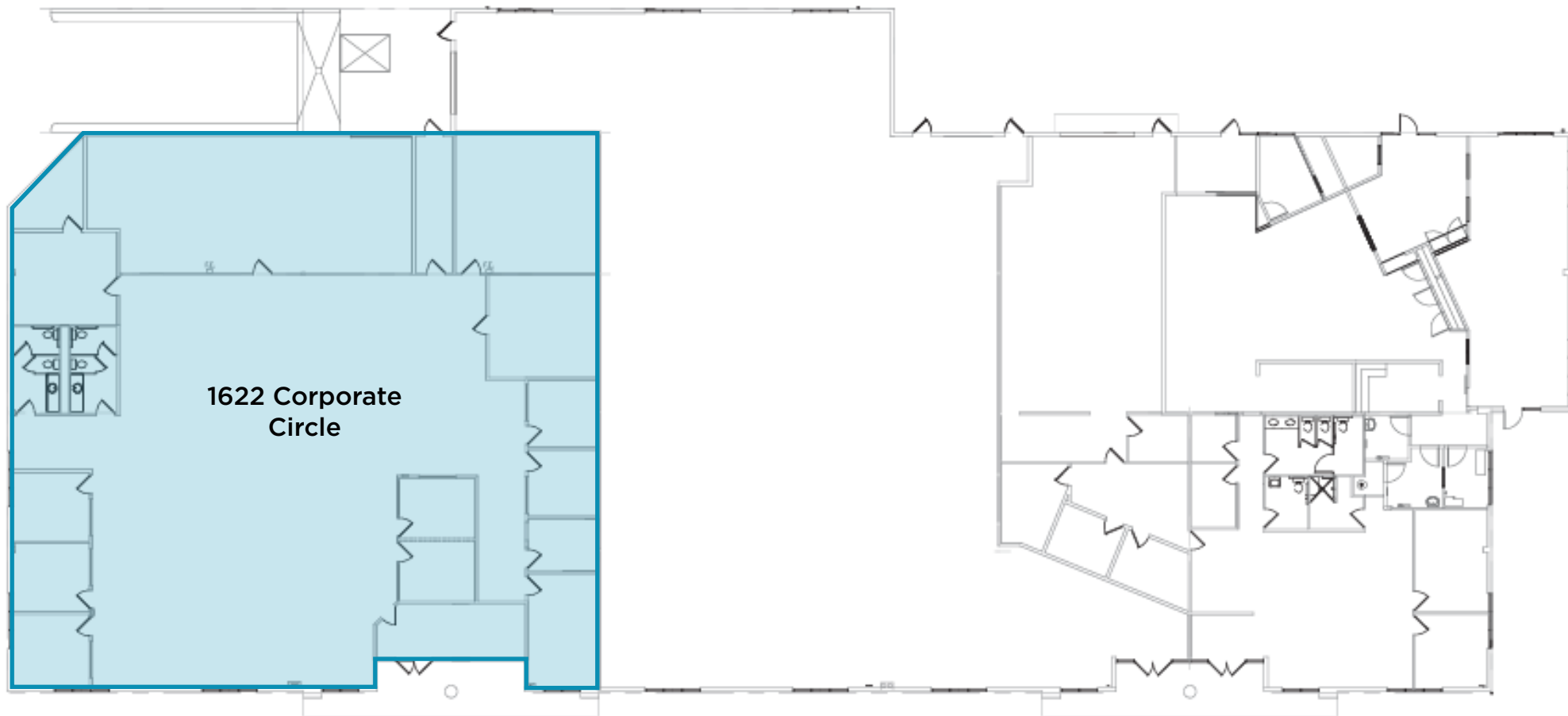
## FEATURES

- Mix of creative office and warehouse
- 1 dock high door
- 1 grade level door
- ±22' clear height
- 3/1,000 parking ratio
- Adjacent to Schollenberger Park with walking paths

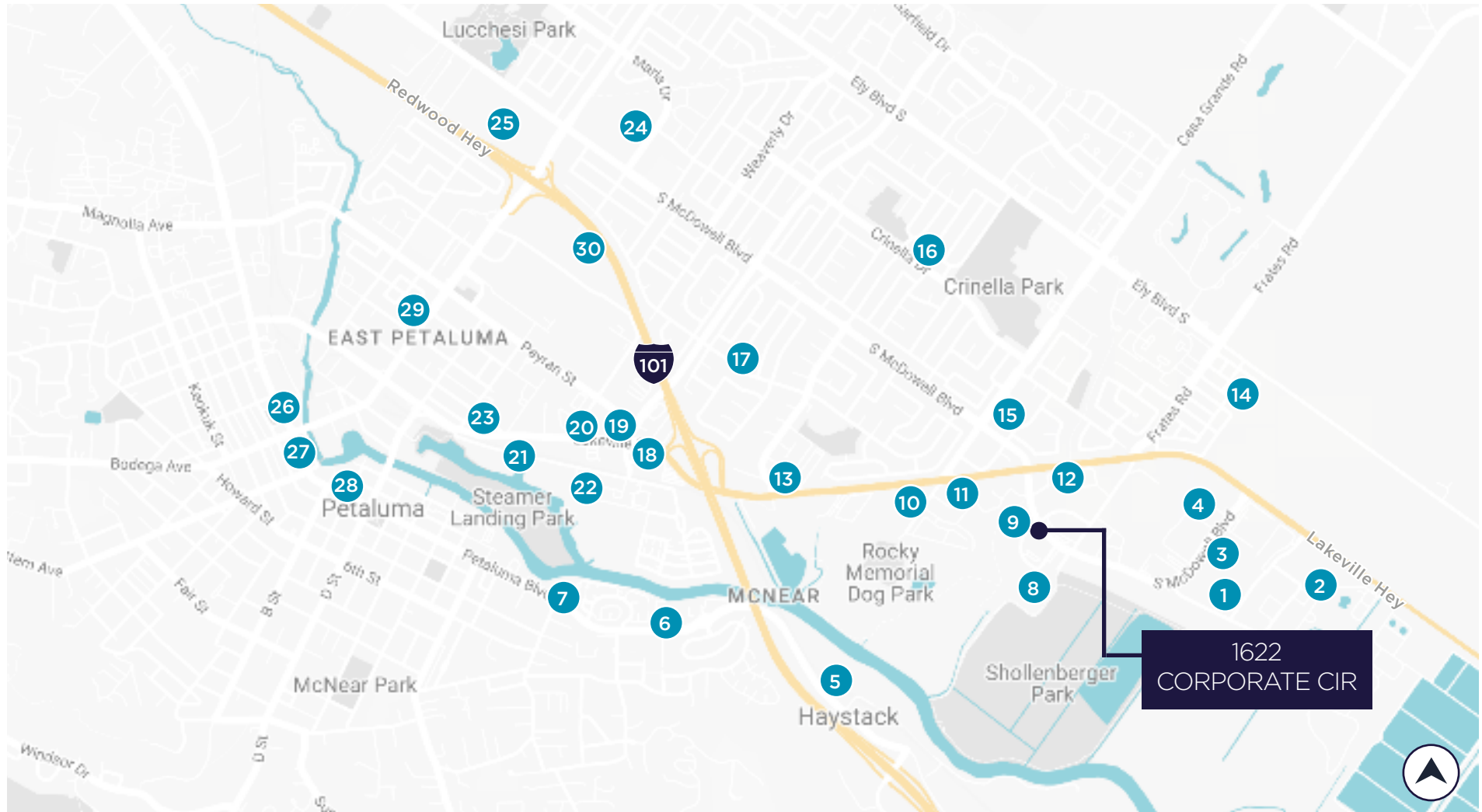
# FLOOR PLAN



# SITE PLAN




# AERIAL AMENITY MAP



- |                                   |                               |                               |                                  |
|-----------------------------------|-------------------------------|-------------------------------|----------------------------------|
| 1. Petaluma Valley Dental         | 9. Miyoko's                   | 17. JT's Mom & Pop Wines      | 25. Trader Joe's                 |
| 2. Kaiser Health Plan Pharmacy    | 10. Petaluma Self Storage     | 18. In-N-Out Burger           | 26. Brewsters Beer Garden        |
| 3. 7 Up Bottling Co-San Francisco | 11. Anytime Fitness           | 19. McDonald's                | 27. Della Fattoria Downtown Café |
| 4. FedEx Ship Center              | 12. PUB Republic              | 20. Anna's Seafood            | 28. Boulevard 14 Cinema          |
| 5. Public Storage                 | 13. Hello Ortho               | 21. Touchless Car Wash        | 29. Whole Foods Market           |
| 6. TruckMax USA                   | 14. Southgate Park            | 22. North Bay Animal Services | 30. Sprouts Farmers Market       |
| 7. Mr. Mom's Cafe                 | 15. Johnson Classic Car Sales | 23. Hampton Inn Petaluma      |                                  |
| 8. FrontRow                       | 16. Pet Lovers Pet Care       | 24. Safeway                   |                                  |





*For more information, please contact:*

**Brian Foster**

Executive Director

+1 415 451 2437

[brian.foster@cushwake.com](mailto:brian.foster@cushwake.com)

Lic #: 01393059

**Steven Leonard**

Managing Director

+1 415 722 1080

[steven.leonard@cushwake.com](mailto:steven.leonard@cushwake.com)

Lic #: 00909604

**Trevor Buck**

Executive Managing Director

+1 415 451 2436

[trevor.buck@cushwake.com](mailto:trevor.buck@cushwake.com)

Lic #: 01255462