

9,000 SF

OFFICE SPACE AVAILABLE IMMEDIATELY



10380 N. AMBASSADOR DRIVE
KANSAS CITY, MO 64153



10380 N. AMBASSADOR DRIVE | KANSAS CITY, MO 64153

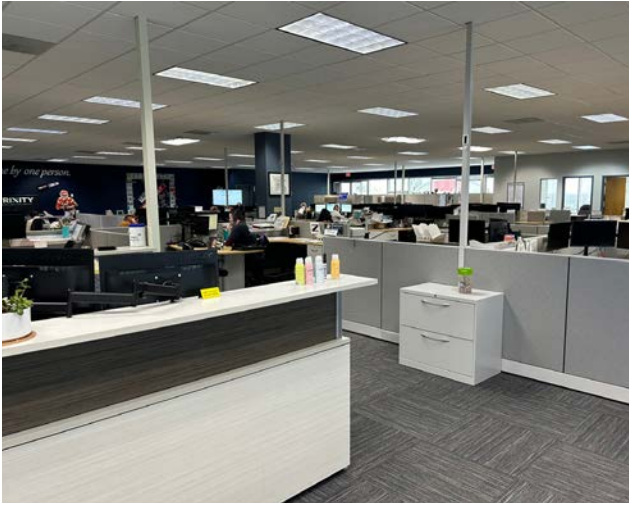
PROPERTY HIGHLIGHTS

- Optimal mix of open space for workstations and private offices on glass line
- Single story building with drive up convenience
- Floor plan can accommodate up to 50 workstations
- Parking ratio of 7 per 1,000
- Tenant identifying monument signage available
- Less than 5 minutes from new MCI-Kansas City International Airport
- Starting Rental Rate of \$18/RSF full service

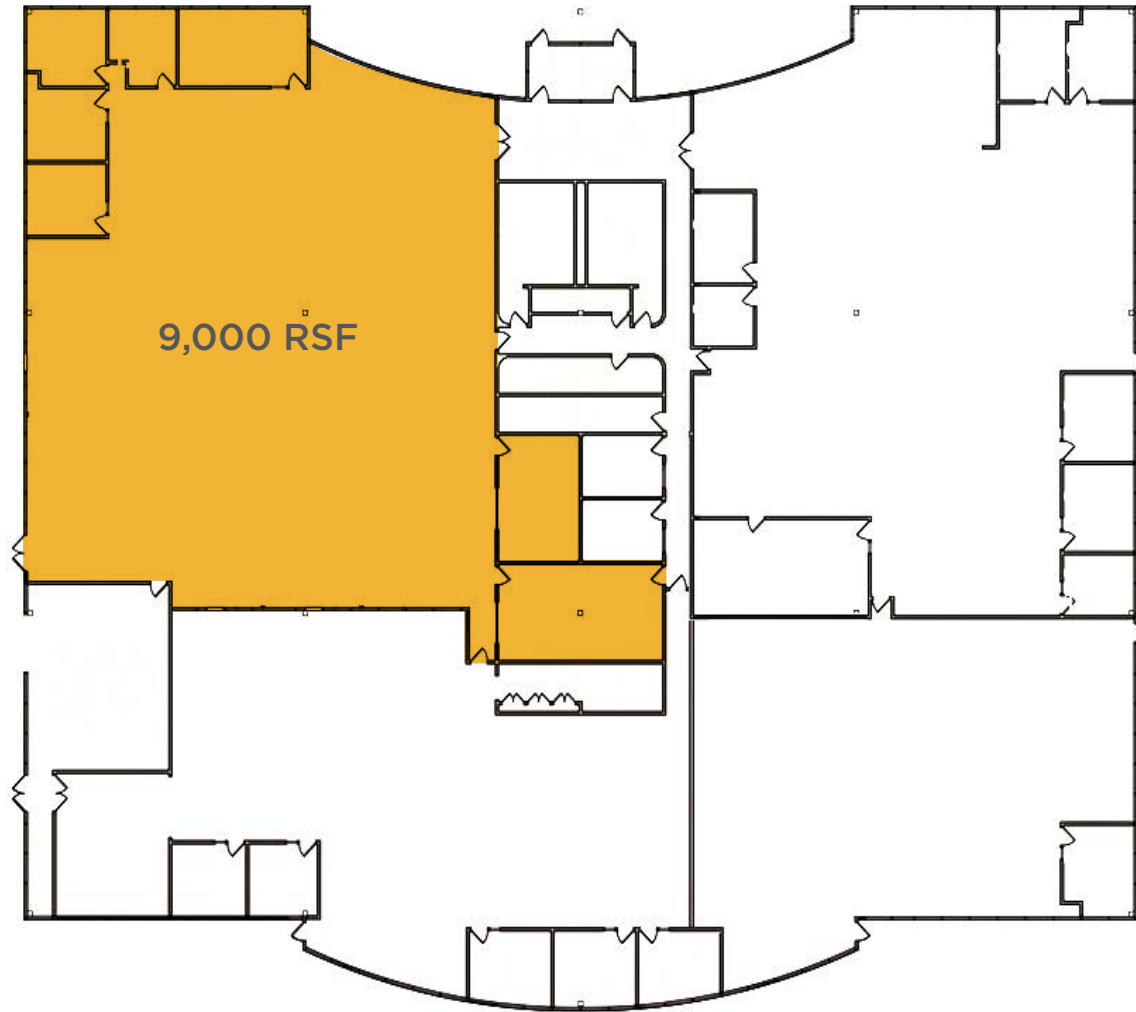


10380 N. AMBASSADOR DRIVE | KANSAS CITY, MO 64153

PROPERTY PHOTOS

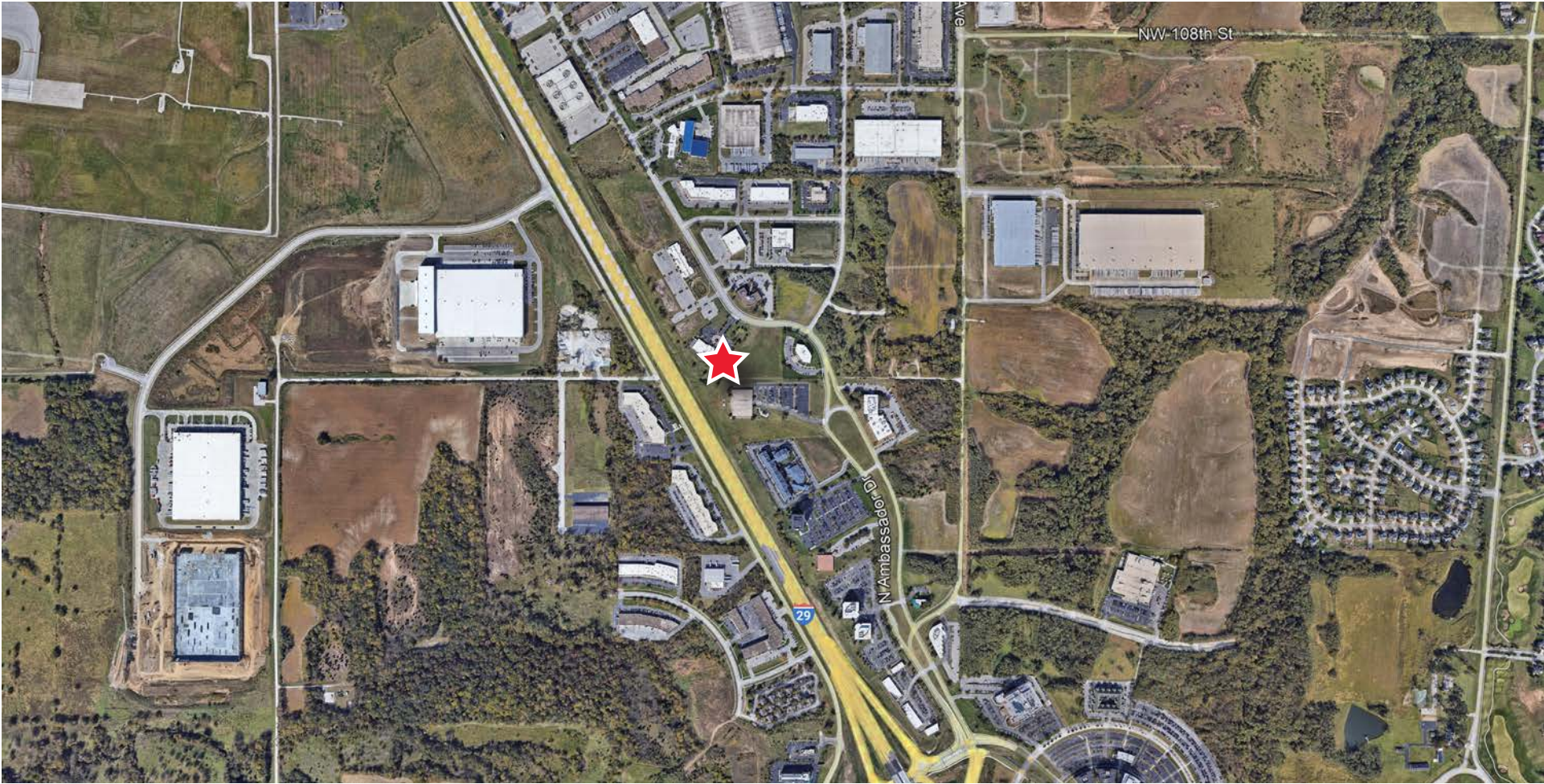


FLOOR PLAN



10380 N. AMBASSADOR DRIVE | KANSAS CITY, MO 64153

AERIAL MAP





FOR MORE INFORMATION,
PLEASE CONTACT:

SUZANNE DIMMEL, CCIM
DIRECTOR

+1 816 412 0271

suzanne.dimmel@cushwake.com

ANDREW GREENE
DIRECTOR

+1 816 216 5654

andrew.greene@cushwake.com

©2024 Cushman & Wakefield. All rights reserved.
The information contained in this communication is strictly confidential. This information has been obtained from sources believed to be reliable but has not been verified. NO WARRANTY OR REPRESENTATION, EXPRESS OR IMPLIED, IS MADE AS TO THE CONDITION OF THE PROPERTY (OR PROPERTIES) REFERENCED HEREIN OR AS TO THE ACCURACY OR COMPLETENESS OF THE INFORMATION CONTAINED HEREIN, AND SAME IS SUBMITTED SUBJECT TO ERRORS, OMISSIONS, CHANGE OF PRICE, RENTAL OR OTHER CONDITIONS, WITHDRAWAL WITHOUT NOTICE, AND TO ANY SPECIAL LISTING CONDITIONS IMPOSED BY THE PROPERTY OWNER(S). ANY PROJECTIONS, OPINIONS OR ESTIMATES ARE SUBJECT TO UNCERTAINTY AND DO NOT SIGNIFY CURRENT OR FUTURE PROPERTY PERFORMANCE.