



LAND FOR SALE



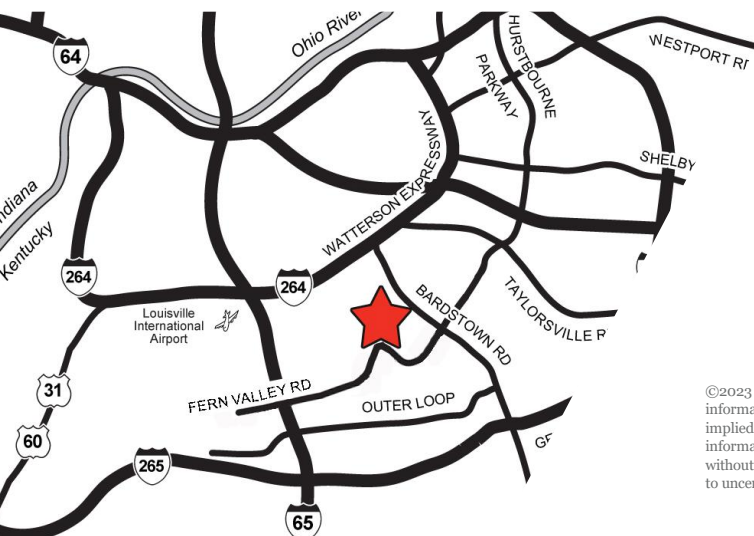
FEGENBUSH LANE LAND

Louisville, KY 40228

+/- 22 Acres

PROPERTY HIGHLIGHTS

- 22 ± acres zoned PEC (will divide)
- Centrally located with great access to I-65
- Close proximity to GE, Ford, and UPS Worldport
- Hurstbourne Pkwy. daily traffic count of 17,300
- Fegenbush Ln. daily traffic count of 12,000
- Full ingress/egress “right in, right out” and “left in, left out” from Hurstbourne Pkwy



ROBERT B. WALKER, SIOR, CCIM
 Senior Director
 502 589 5150 ext. 254
 rwalker@commercialkentucky.com

JAKE F. MILLS
 Senior Associate
 502 589 5150 ext. 252
 jmills@commercialkentucky.com

333 E. Main Street, Suite 510
 Louisville, KY 40202
 phone: +1 502 589 5150
 www.commercialkentucky.com

©2023 Cushman & Wakefield. All rights reserved. The information contained in this communication is strictly confidential. This information has been obtained from sources believed to be reliable but has not been verified. No warranty or representation, express or implied, is made as to the condition of the property (or properties) referenced herein or as to the accuracy or completeness of the information contained herein, and same is submitted subject to errors, omissions, change of price, rental or other conditions, withdrawal without notice, and to any special listing conditions imposed by the property owner(s). Any projections, opinions or estimates are subject to uncertainty and do not signify current or future property performance.

FEGENBUSH LANE LAND

Louisville, KY 40228

+/- 22 Acres



AERIAL/LOCATION MAP



ROBERT B. WALKER, SIOR, CCIM
Senior Director
502 589 5150 ext. 254
rwalker@commercialkentucky.com

JAKE F. MILLS
Senior Associate
502 589 5150 ext. 252
jmills@commercialkentucky.com

333 E. Main Street, Suite 510
Louisville, KY 40202
phone: +1 502 589 5150
www.commercialkentucky.com

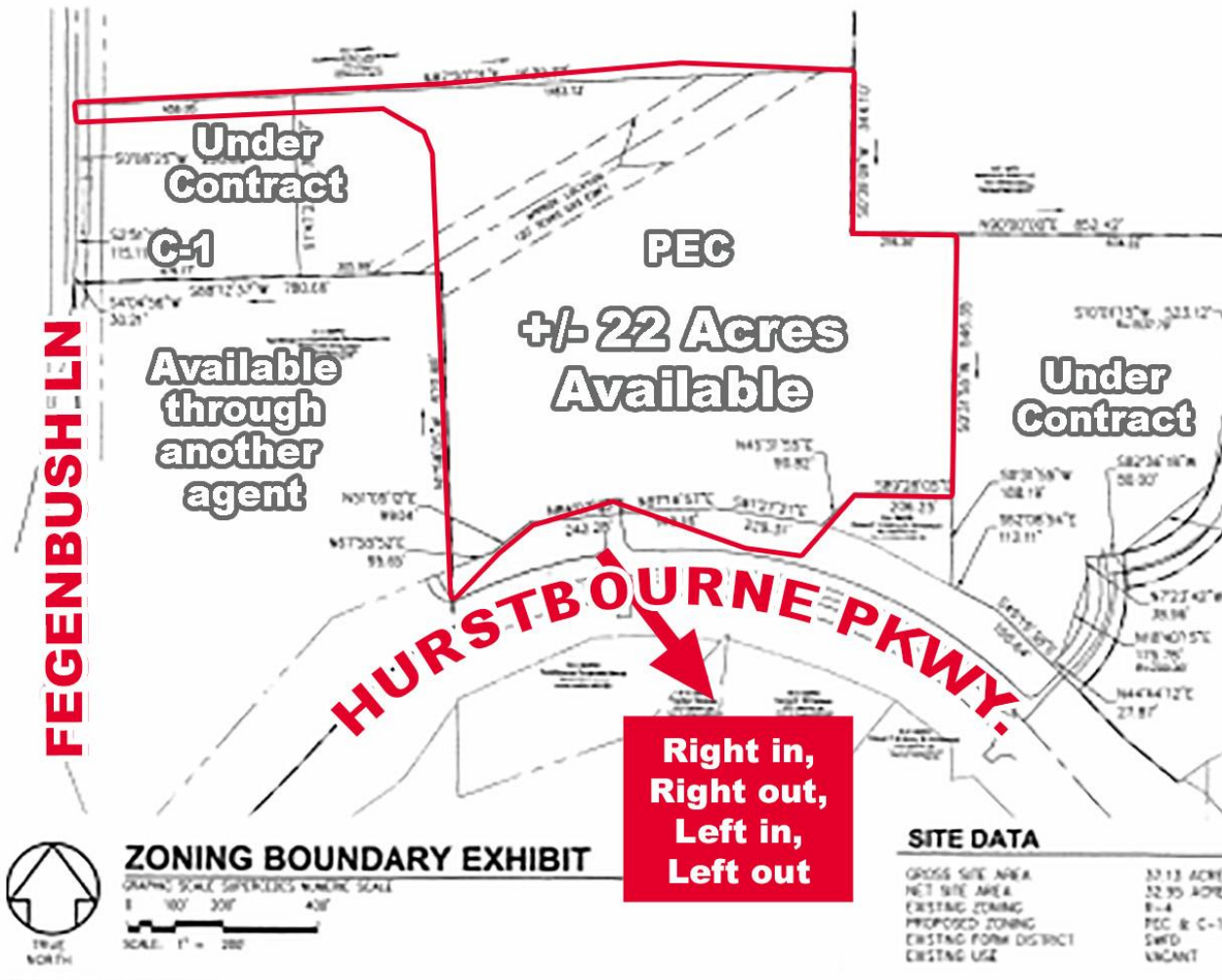
FEGENBUSH LANE LAND

Louisville, KY 40228

+/- 22 Acres



AERIAL/LOCATION MAP



ROBERT B. WALKER, SIOR, CCIM
Senior Director
502 589 5150 ext. 254
rwalker@commercialkentucky.com

JAKE F. MILLS
Senior Associate
502 589 5150 ext. 252
jmills@commercialkentucky.com

333 E. Main Street, Suite 510
Louisville, KY 40202
phone: +1 502 589 5150
www.commercialkentucky.com