

BUILT OUT LAB SPACE AVAILABLE FOR SUBLEASE

6920 KOLL CENTER PARKWAY | PLEASANTON, CA



PROPERTY HIGHLIGHTS

- » ±16,854 RSF
- » Suite 213
- » Mix of clean-room labs and office space
- » Some furniture available
- » Roll-up door
- » Great freeway access
- » Close to amenities
- » Parking: 3.5/1,000
- » Sublease expiration: 12/21/2024



MITCH HERTZ

Executive Director
+1 925 274 2803
mitch.hertz@cushwake.com
Lic #01161729

JOHN LEWERENZ

Managing Director
+1 415 710 5826
john.lewerenz@cushwake.com
Lic #01100835

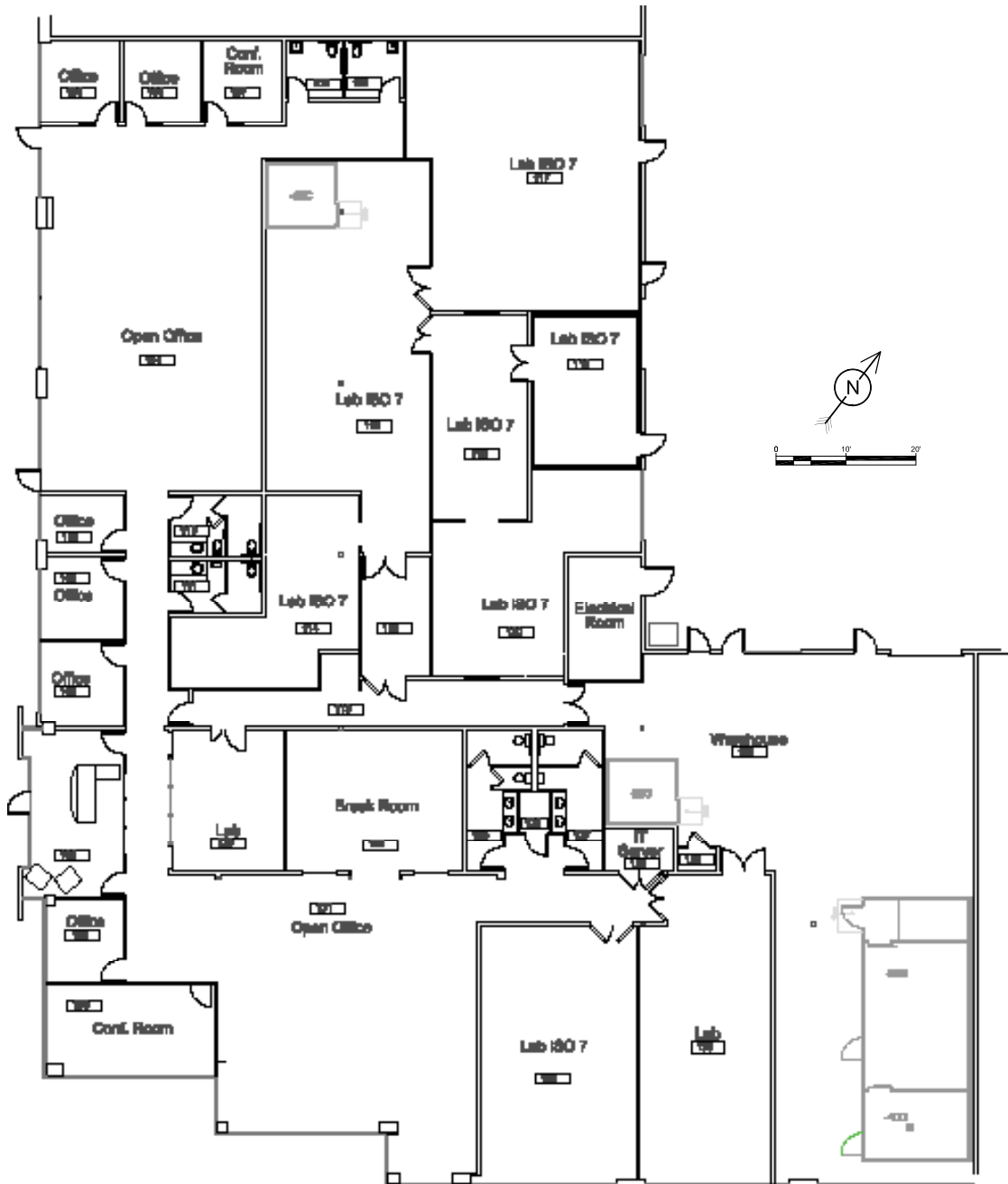


LAB SPACE AVAILABLE FOR SUBLEASE

6920 KOLL CENTER PARKWAY | SUITE 213

±16,854 RSF

Floor Plan



MITCH HERTZ

Executive Director
+1 925 274 2803
mitch.hertz@cushwake.com
Lic #01161729

JOHN LEWERENZ

Managing Director
+1 415 710 5826
john.lewerenz@cushwake.com
Lic #01100835



LAB SPACE AVAILABLE FOR SUBLEASE

6920 KOLL CENTER PARKWAY | SUITE 213

±16,854 RSF

Amenities Map



MITCH HERTZ

Executive Director
+1 925 274 2803
mitch.hertz@cushwake.com
Lic #01161729

JOHN LEWERENZ

Managing Director
+1 415 710 5826
john.lewerenz@cushwake.com
Lic #01100835

