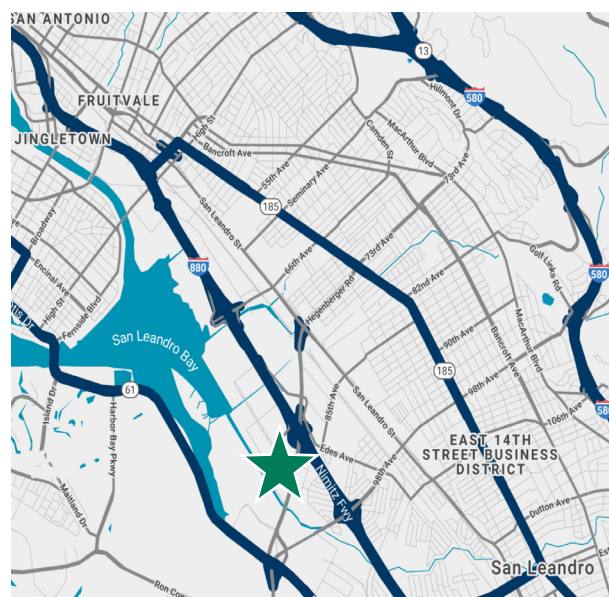


FOR LEASE: 421 PENDLETON WAY OAKLAND, CA



PROPERTY HIGHLIGHTS

- » ±11,900 SF Light Industrial Building
- » Located within Port of Oakland Business Park
- » 25% Office Build-Out, Conditioned
- » Four (4) Restroom Cores
- » Paved Yard Area with Electrified Fence
- » One (1) 12' X 10' Grade Level Loading Door
- » 12' Clear Height
- » 800 AMP Power 3-Phase (Tenant to Verify)
- » New Insulated Roof
- » Immediate Access to I-880 via Hegenberger Road
- » 1/4 Mile to Oakland International Airport
- » \$1.40/SF Per Month Gross
- » **Building Occupied - Shown by Appointment Only**



JOYCE CUNNINGHAM

Managing Director

510 267 6017

joyce.cunningham@cushwake.com

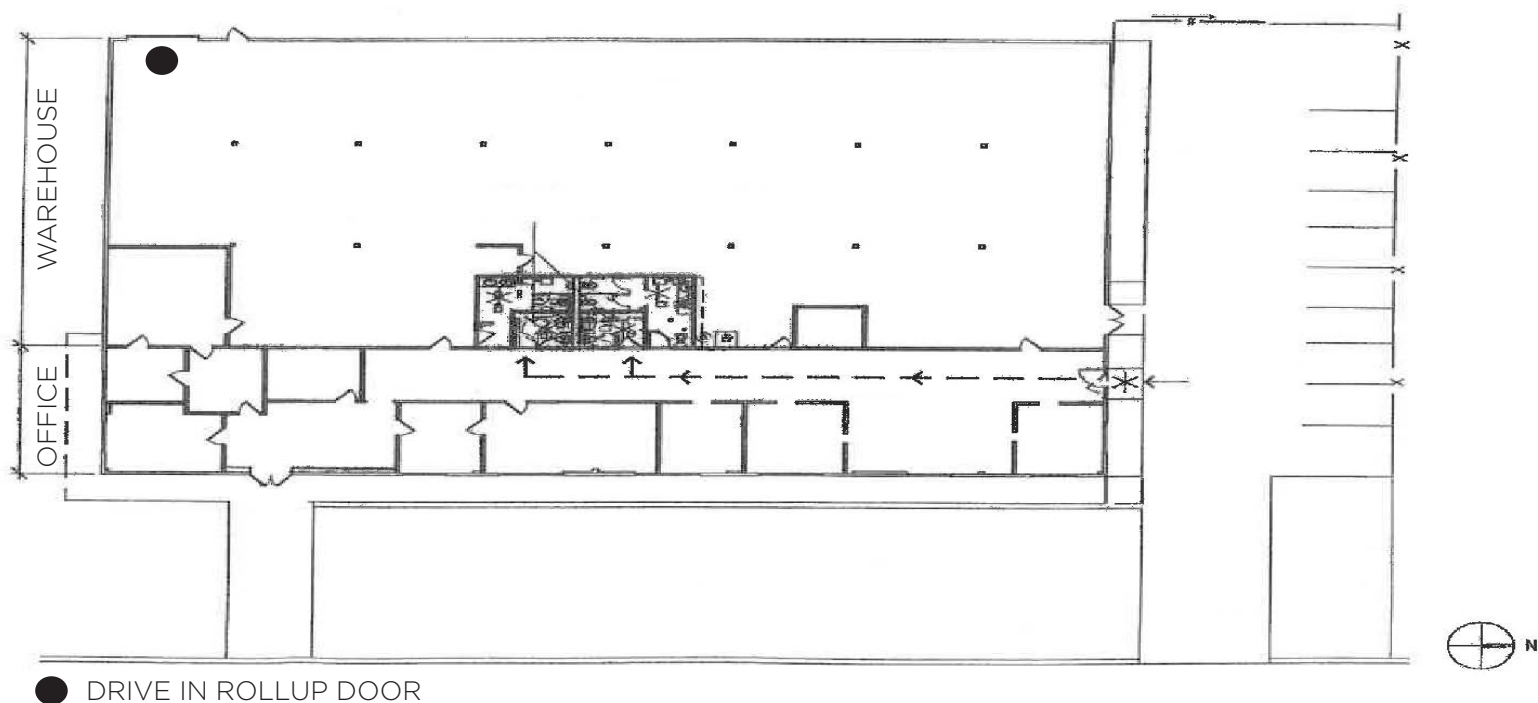
LIC #00868171



CUSHMAN &
WAKEFIELD

FOR LEASE: 421 PENDLETON WAY OAKLAND, CA

SITE PLAN & PHOTOS



JOYCE CUNNINGHAM

Managing Director

510 267 6017

joyce.cunningham@cushwake.com

LIC #00868171



CUSHMAN &
WAKEFIELD