

2811

ADELINE STREET
Oakland, California



FOR SALE:

±19,543 SF TWO STORY OFFICE/INDUSTRIAL BUILDING

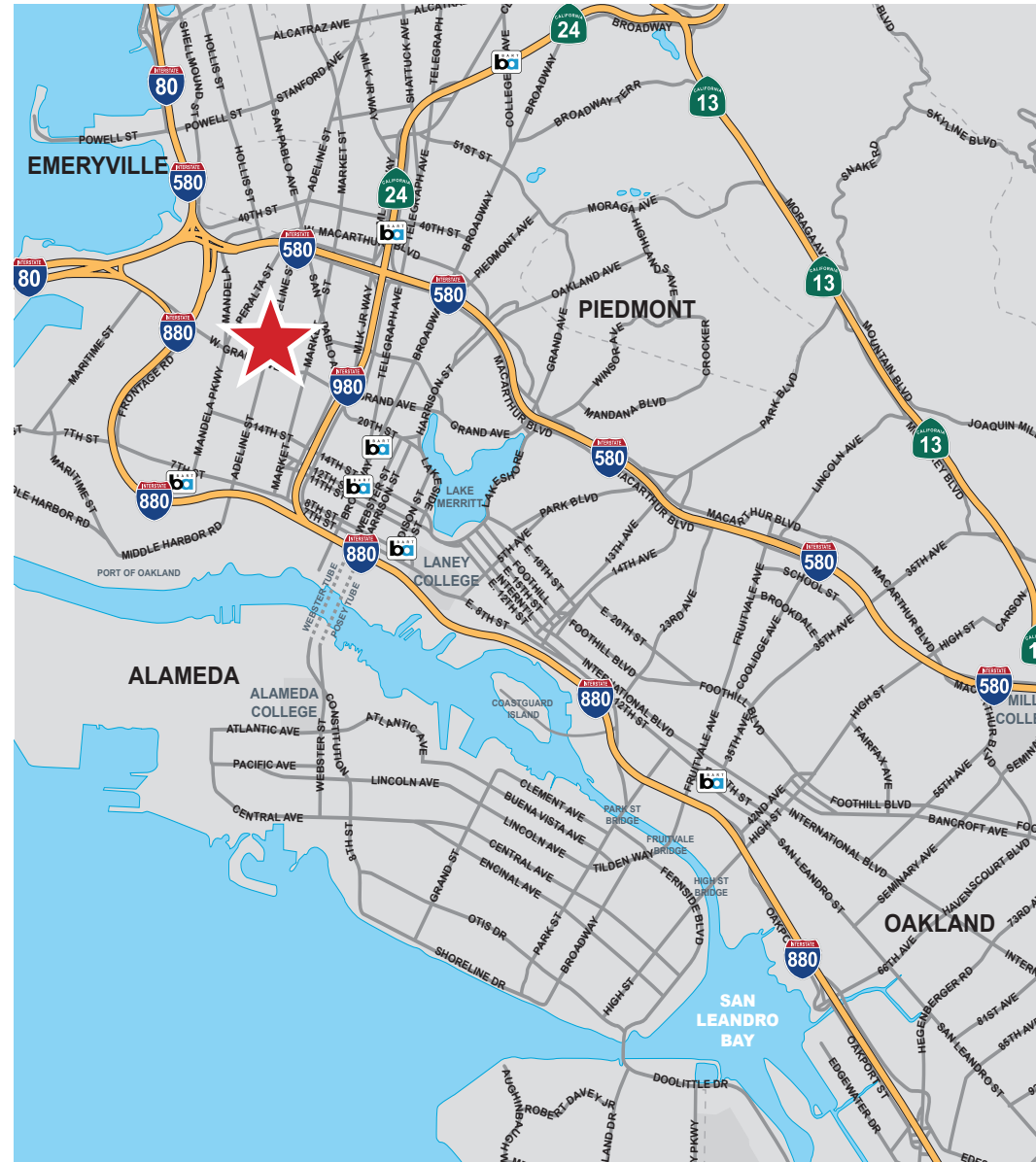
JOYCE CUNNINGHAM
Managing Director
510 267 6017
joyce.cunnningham@cushwake.com
LIC #00868171



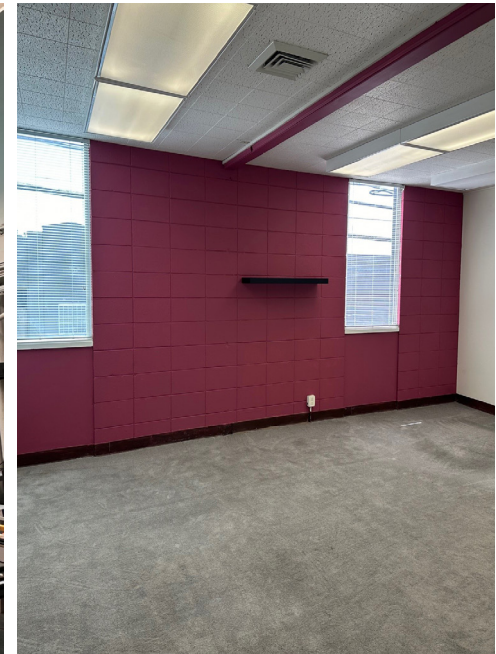
PROPERTY HIGHLIGHTS

- **West Oakland Location**

- Fantastic Owner/User Building with Short Term Income in Place
- ±19,543 SF Two-Story Office/Industrial Building
- ±6,000 SF On-Site Gated Parking Lot
- One (1) Grade Level Roll-Up Door
- Power: 800 Amps/480 Volts
- Conveniently Located with Direct Approach to San Francisco via West Grand Avenue
- Easy Access to I-880, I-580, Highway 580, Highway 24 and the Port of Oakland
- Zoning: CIX-IA-S-19
- Opportunity Zone Location
- Sale Price: Contact Broker



PROPERTY PHOTOS



PROXIMITY AERIAL



2811

ADELINE STREET
Oakland, California



JOYCE CUNNINGHAM
Managing Director
510 267 6017
joyce.cunnningham@cushwake.com
LIC #00868171



©2024 Cushman & Wakefield. All rights reserved. The information contained in this communication is strictly confidential. This information has been obtained from sources believed to be reliable but has not been verified. NO WARRANTY OR REPRESENTATION, EXPRESS OR IMPLIED, IS MADE AS TO THE CONDITION OF THE PROPERTY (OR PROPERTIES) REFERENCED HEREIN OR AS TO THE ACCURACY OR COMPLETENESS OF THE INFORMATION CONTAINED HEREIN, AND SAME IS SUBMITTED SUBJECT TO ERRORS, OMISSIONS, CHANGE OF PRICE, RENTAL OR OTHER CONDITIONS, WITHDRAWAL WITHOUT NOTICE, AND TO ANY SPECIAL LISTING CONDITIONS IMPOSED BY THE PROPERTY OWNER(S). ANY PROJECTIONS, OPINIONS OR ESTIMATES ARE SUBJECT TO UNCERTAINTY AND DO NOT SIGNIFY CURRENT OR FUTURE PROPERTY PERFORMANCE.