

# 5100 FRANKLIN DR. PLEASANTON ±21,590 – 64,760 SF OFFICE FOR SUBLEASE

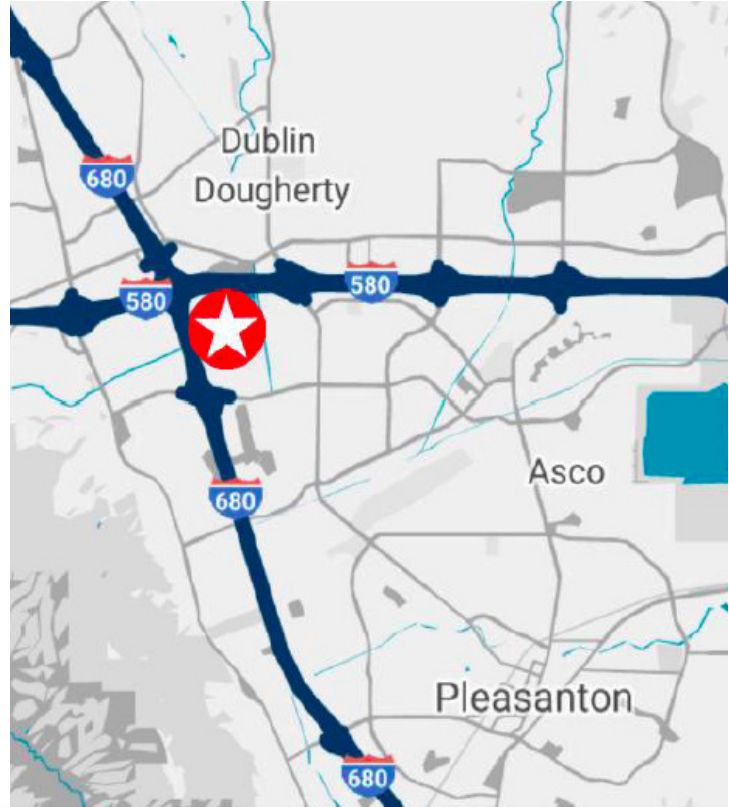
PLUG N PLAY

BUILDING SIGNAGE



## PROPERTY HIGHLIGHTS

- » Freestanding Building totaling ±64,760 SF ( ±53,970 Sublease and ±10,790 SF Direct)
- » Master lease through 8/31/2029 - Shorter term available
- » Modern Class A Office Improvements
- » 1st Floor Includes
  - 6 Private Offices
  - Auditorium Seating For Over 200 People
  - Roll Up Door Available With Grade Loading
- » 2nd Floor Includes
  - 40+ Private Offices
  - 7 Conference Rooms, Including Large Board Room
  - 100 Workstations
  - Several Collaboration Area
- » Call Brokers for Pricing and Tour Instructions

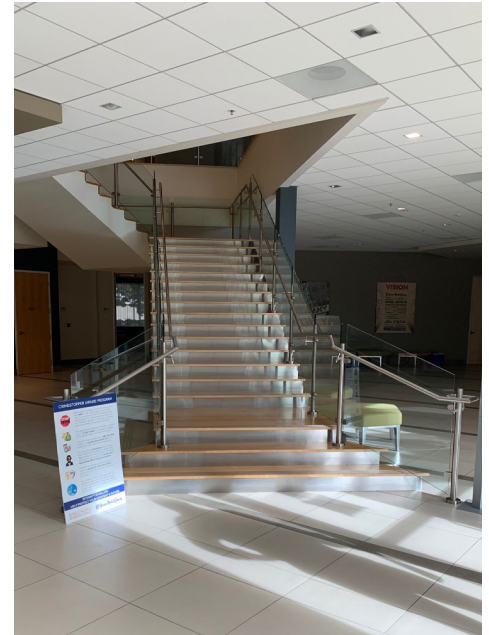
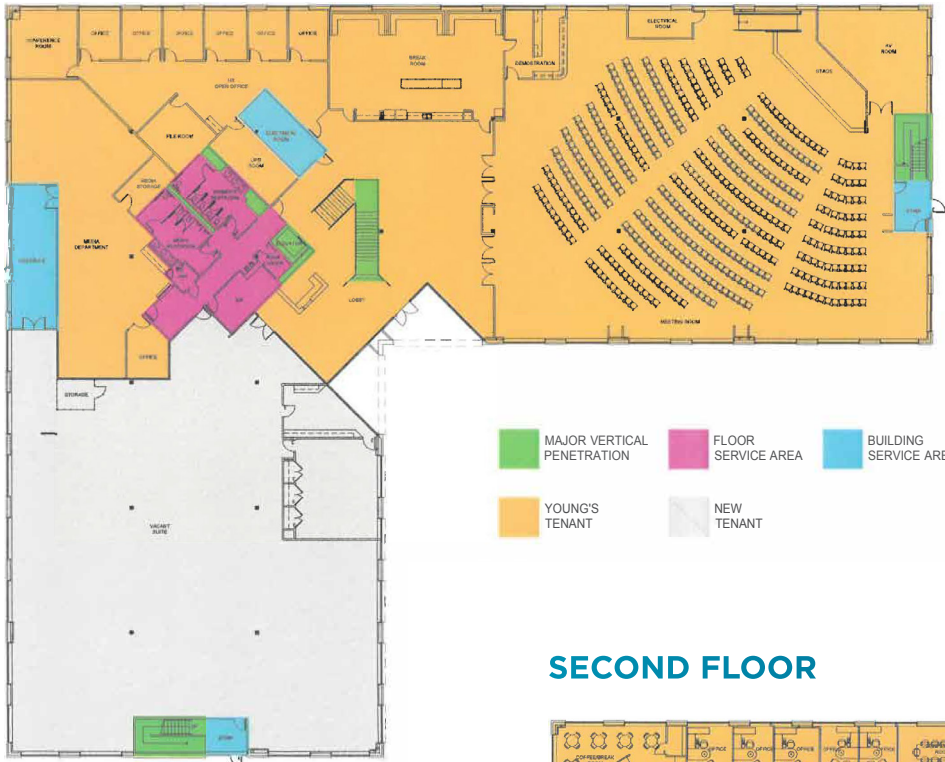


**John Fennell**  
Managing Director  
+1 (925) 963-3698  
john.fennell@cushwake.com  
Lic# 00902673

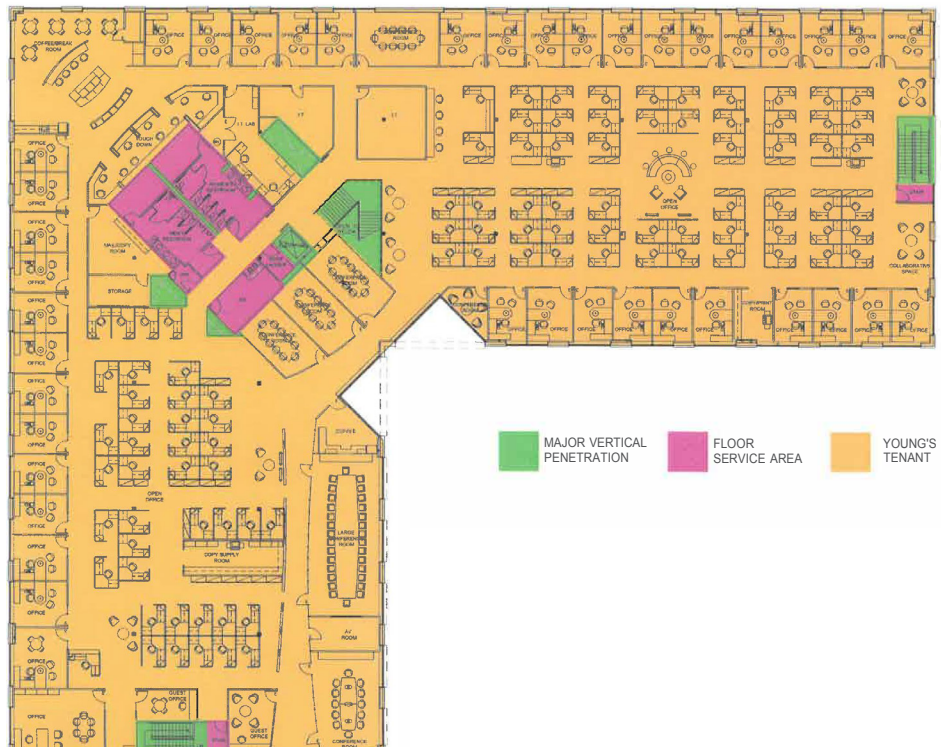
**Mark Dowling**  
Managing Director  
+1 (925) 621-3844  
mark.dowling@cushwake.com  
Lic# 01107108

# FLOOR PLAN

## FIRST FLOOR



## SECOND FLOOR



# PHOTOS



**John Fennell**  
Managing Director  
+1 (925) 963-3698  
john.fennell@cushwake.com  
Lic# 00902673

**Mark Dowling**  
Managing Director  
+1 (925) 621-3844  
mark.dowling@cushwake.com  
Lic# 01107108

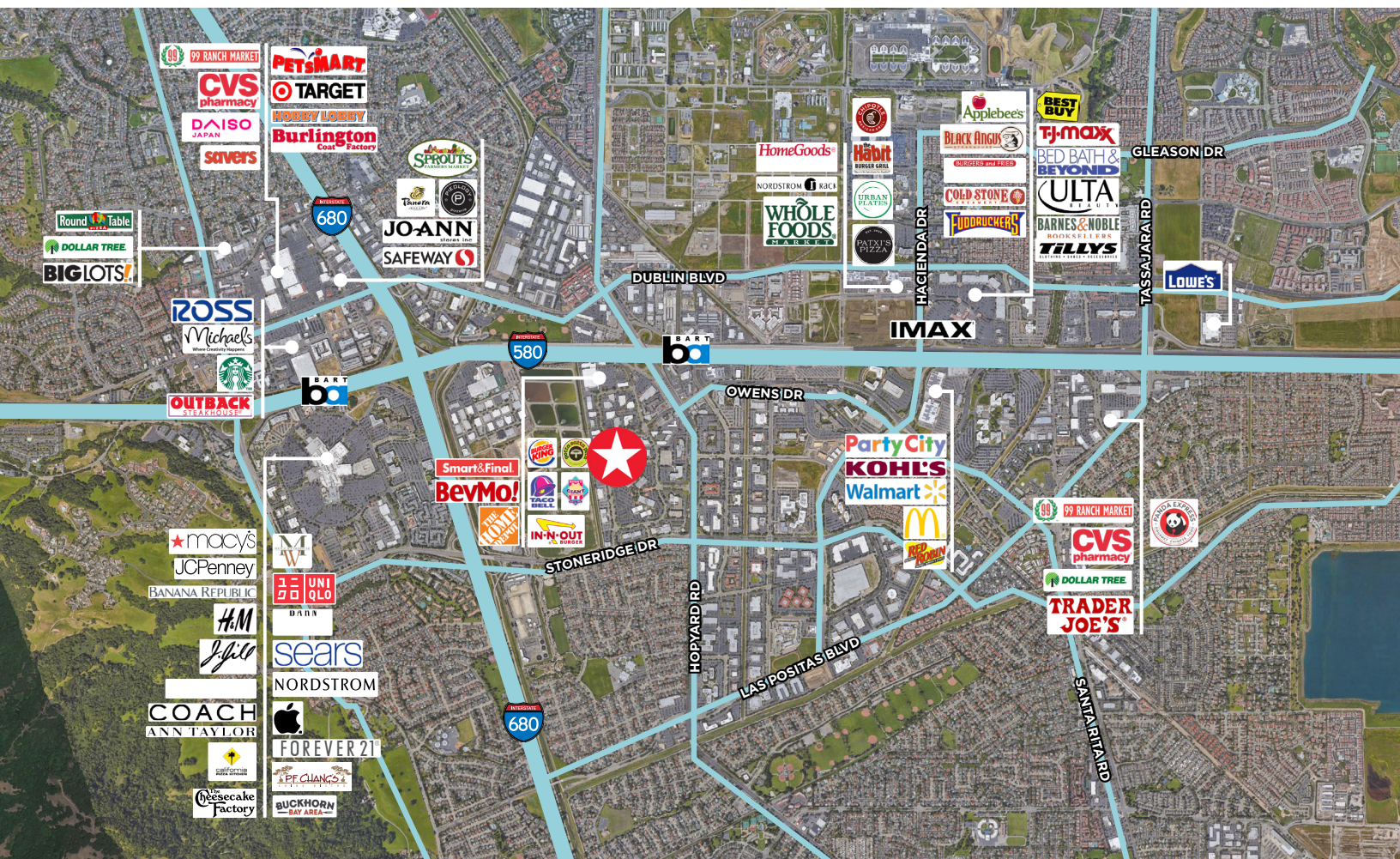
## AMENITY MAP



Less than a **half mile** to 13 **restaurants**, 11 **cafes**, 4 **banks**, 2 **grocery stores**, and a **dry cleaner**

Within a **mile** of **580**, **680**, and **BART**

# RETAIL MAP



©2022 Cushman & Wakefield. All rights reserved. The information contained in this communication is strictly confidential. This information has been obtained from sources believed to be reliable but has not been verified. NO WARRANTY OR REPRESENTATION, EXPRESS OR IMPLIED, IS MADE AS TO THE CONDITION OF THE PROPERTY (OR PROPERTIES) REFERENCED HEREIN OR AS TO THE ACCURACY OR COMPLETENESS OF THE INFORMATION CONTAINED HEREIN, AND SAME IS SUBMITTED SUBJECT TO ERRORS, OMISSIONS, CHANGE OF PRICE, RENTAL OR OTHER CONDITIONS, WITHDRAWAL WITHOUT NOTICE, AND TO ANY SPECIAL LISTING CONDITIONS IMPOSED BY THE PROPERTY OWNER(S). ANY PROJECTIONS, OPINIONS OR ESTIMATES ARE SUBJECT TO UNCERTAINTY AND DO NOT SIGNIFY CURRENT OR FUTURE PROPERTY PERFORMANCE.

**John Fennell**  
 Managing Director  
 +1 (925) 963-3698  
 john.fennell@cushwake.com  
 Lic# 00902673

**Mark Dowling**  
 Managing Director  
 +1 (925) 621-3844  
 mark.dowling@cushwake.com  
 Lic# 01107108

