

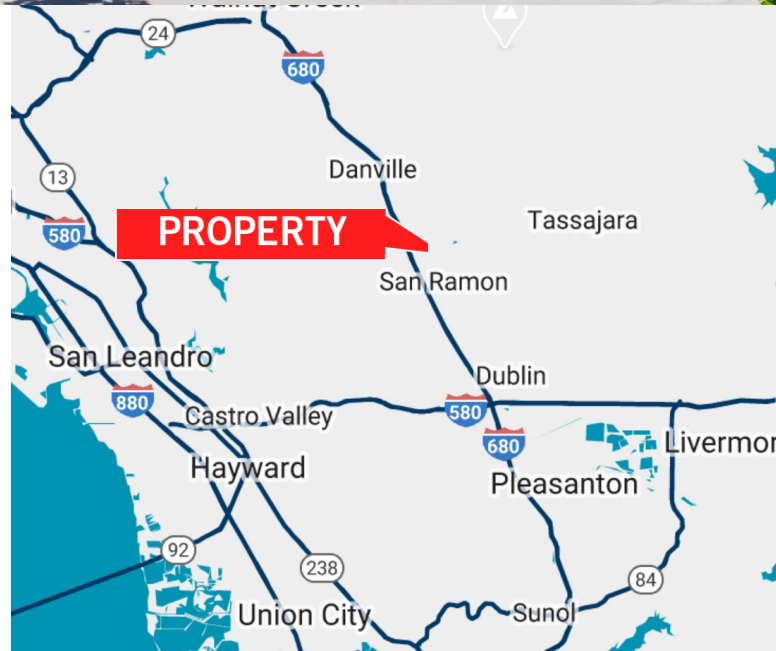
# 4000 EXECUTIVE PARKWAY SUITE 190 | SAN RAMON

GROUND FLOOR 6,726 SF OFFICE SPACE FOR SUBLEASE



## PROPERTY HIGHLIGHTS

- » 6,726 Rentable Square Feet – See attached floor plan
- » Short Term Sublease – expires 10/31/2024
- » On-Site Café Restaurant:  
“Bishop Farms” serves coffee, breakfast, lunch
- » Outdoor Collaborative Amenities
- » Plentiful Surface Parking
- » Aggressive Rental Deal – make us an offer



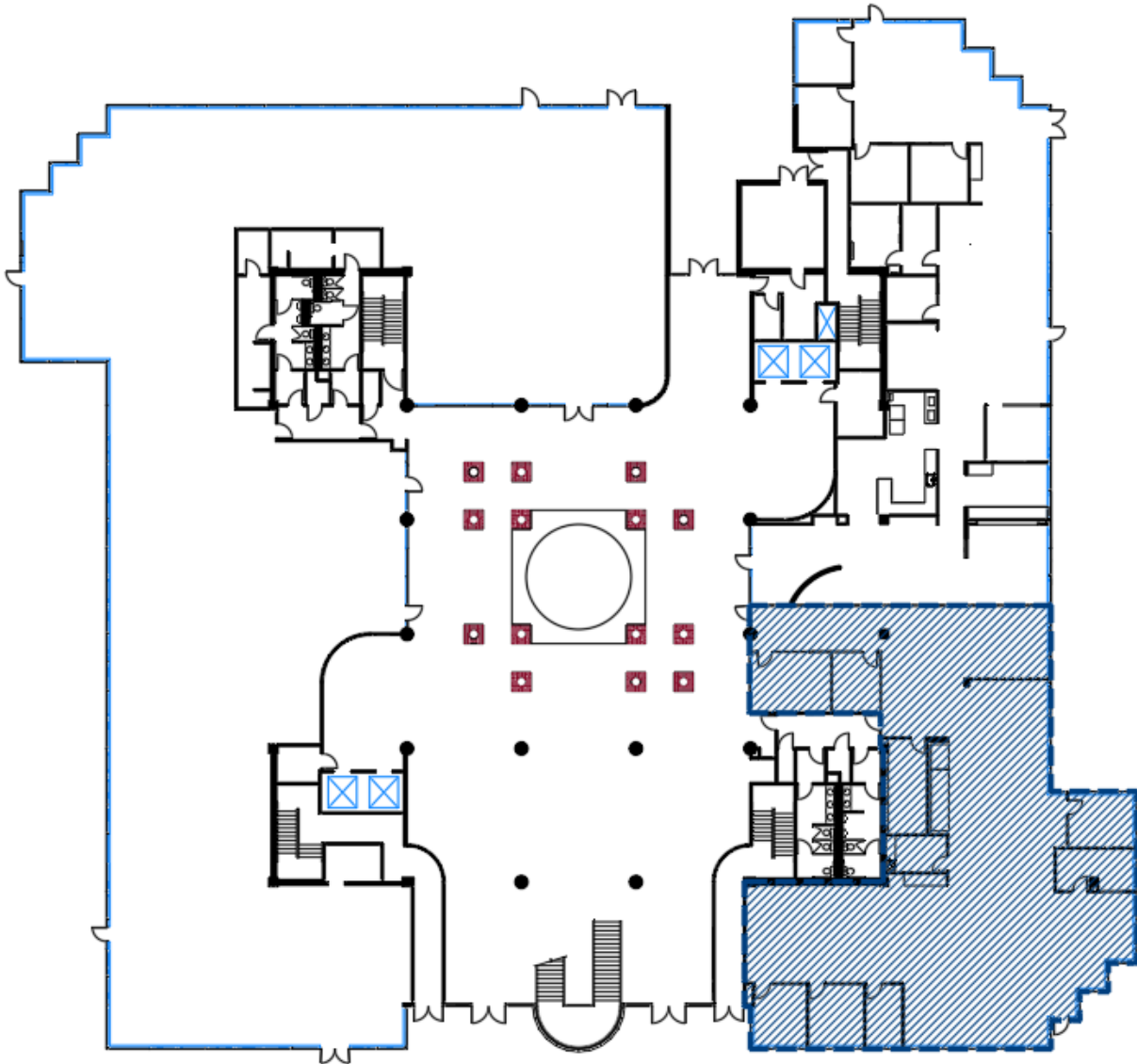
**JOHN FENNEL**  
Managing Director  
+1 925 274 2802  
john.fennell@cushwake.com  
Lic #00902673

**MITCH HERTZ**  
Executive Director  
+1 925 274 2803  
mitch.hertz@cushwake.com  
Lic #01161729



# GROUND FLOOR OFFICE SPACE FOR SUBLEASE

## FLOOR PLAN



**JOHN FENNELL**  
Managing Director  
+1 925 274 2802  
john.fennell@cushwake.com  
Lic #00902673

**MITCH HERTZ**  
Executive Director  
+1 925 274 2803  
mitch.hertz@cushwake.com  
Lic #01161729





# GROUND FLOOR OFFICE SPACE FOR SUBLEASE

## EXTERIOR PHOTOS



**JOHN FENNEL**  
Managing Director  
+1 925 274 2802  
john.fennell@cushwake.com  
Lic #00902673

**MITCH HERTZ**  
Executive Director  
+1 925 274 2803  
mitch.hertz@cushwake.com  
Lic #01161729





# GROUND FLOOR OFFICE SPACE FOR SUBLEASE

## INTERIOR PHOTOS



**JOHN FENNEL**  
Managing Director  
+1 925 274 2802  
john.fennell@cushwake.com  
Lic #00902673

**MITCH HERTZ**  
Executive Director  
+1 925 274 2803  
mitch.hertz@cushwake.com  
Lic #01161729





# GROUND FLOOR OFFICE SPACE FOR SUBLEASE

## LOCAL AMENITIES



**JOHN FENNEL**  
Managing Director  
+1 925 274 2802  
john.fennell@cushwake.com  
Lic #00902673

**MITCH HERTZ**  
Executive Director  
+1 925 274 2803  
mitch.hertz@cushwake.com  
Lic #01161729

