

6210

STONERIDGE MALL ROAD
PLEASANTON, CA



SUBLEASE SPACES AVAILABLE | ±21,611 SF- DIVISIBLE | SUITES: 200, 210, 240

MITCH HERTZ

EXECUTIVE DIRECTOR // +1 925 274 2803 // MITCH.HERTZ@CUSHWAKE.COM // LIC #01161729



PROPERTY HIGHLIGHTS

- SQUARE FOOTAGE:
 - SUITE 200: 8,615
 - SUITE 210: 5,814
 - SUITE 240: 7,182
- SUBLEASE TERMS FLEXIBLE
- IMMEDIATE ACCESS TO I-680 AND I-580
- FREE ACCESS TO CONFERENCE AND FITNESS CENTER
- ADJACENT TO ABUNDANT RETAIL AMENITIES
- WALKING DISTANCE TO BART
- AMPLE PARKING 3.68/1,000
- **AVAILABLE: 07/01/2023**
- **ASKING RATE: CALL BROKER FOR DETAILS**

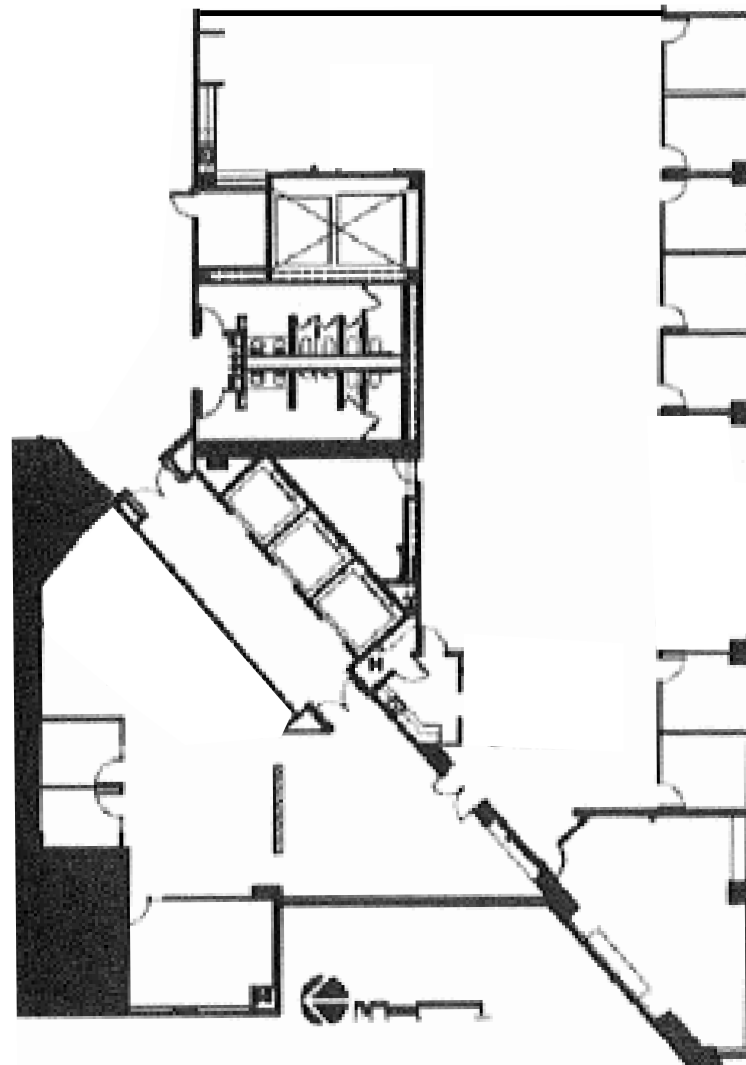


SUITE 200 FLOOR PLAN

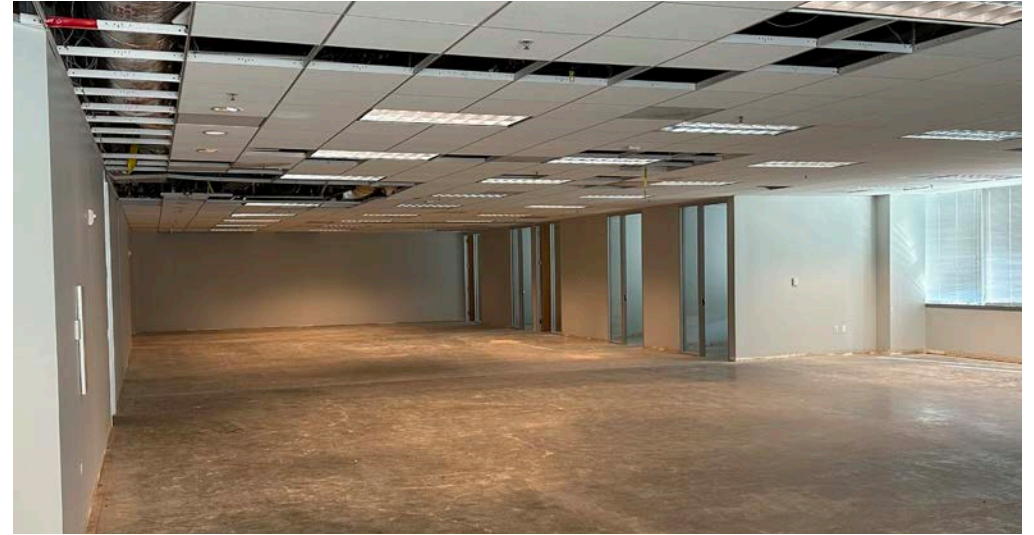
SUITE 200 - 8,615 SF



KEY PLAN



SUITE 200 PHOTO GALLERY

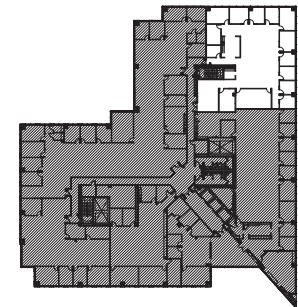


SUITE 210 FLOOR PLAN

SUITE 210 - 5,814 SF



SPACE COUNT	
WORK STATIONS:	6
OFFICES:	11
CONFERENCE:	2
RECEPTION	1
TOTAL HEAD COUNT	18



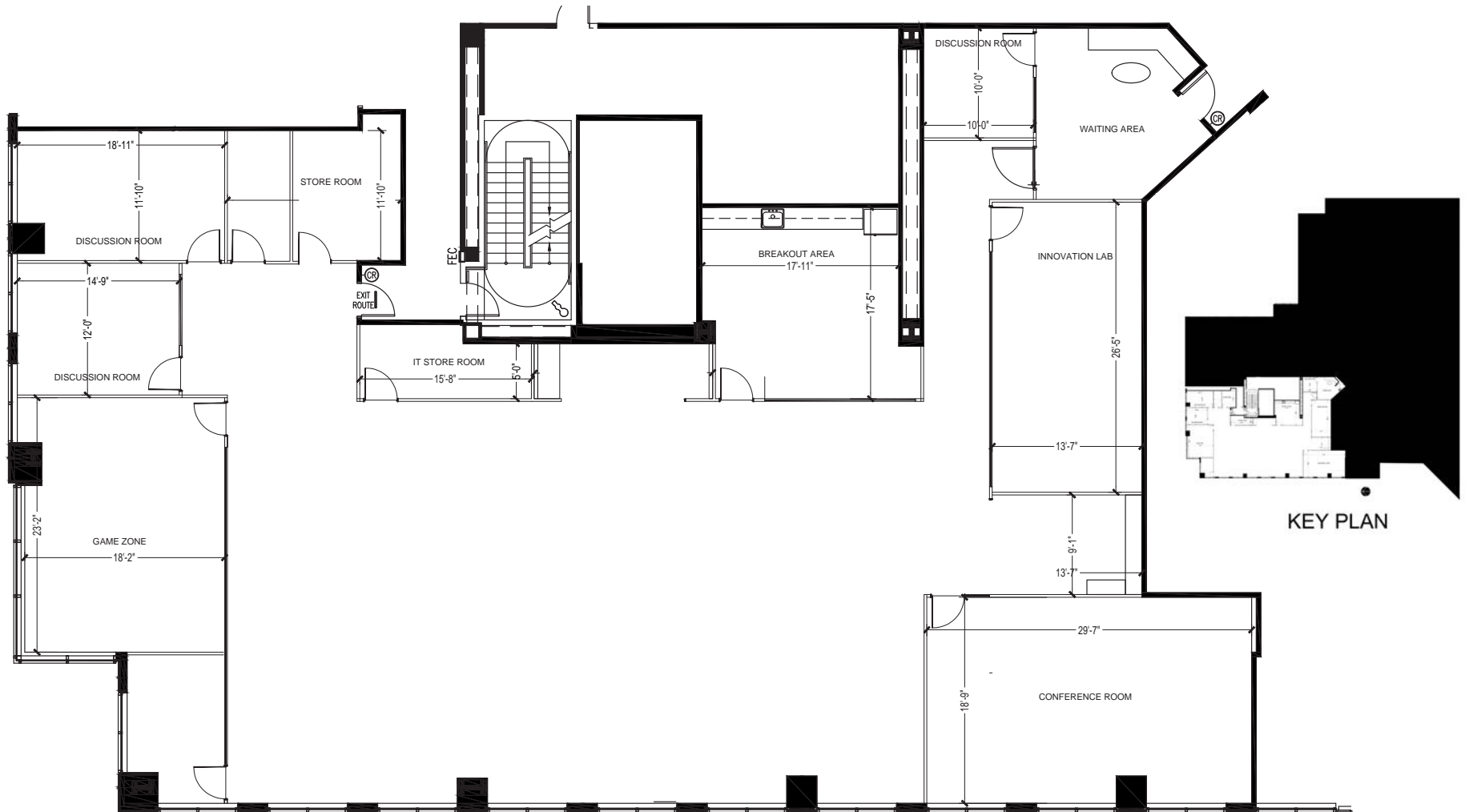
KEY PLAN

SUITE 210 PHOTO GALLERY

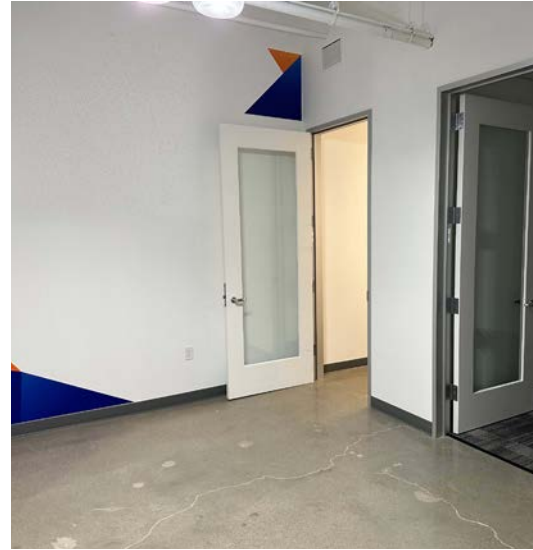


SUITE 240 FLOOR PLAN

SUITE 240 - 7,182 SF



SUITE 240 PHOTO GALLERY



MITCH HERTZ
EXECUTIVE DIRECTOR
+1 925 274 2803
MITCH.HERTZ@CUSHWAKE.COM
LIC #01161729

©2022 Cushman & Wakefield. All rights reserved. The information contained in this communication is strictly confidential. This information has been obtained from sources believed to be reliable but has not been verified. NO WARRANTY OR REPRESENTATION, EXPRESS OR IMPLIED, IS MADE AS TO THE CONDITION OF THE PROPERTY (OR PROPERTIES) REFERENCED HEREIN OR AS TO THE ACCURACY OR COMPLETENESS OF THE INFORMATION CONTAINED HEREIN, AND SAME IS SUBMITTED SUBJECT TO ERRORS, OMISSIONS, CHANGE OF PRICE, RENTAL OR OTHER CONDITIONS, WITHDRAWAL WITHOUT NOTICE, AND TO ANY SPECIAL LISTING CONDITIONS IMPOSED BY THE PROPERTY OWNER(S). ANY PROJECTIONS, OPINIONS OR ESTIMATES ARE SUBJECT TO UNCERTAINTY AND DO NOT SIGNIFY CURRENT OR FUTURE PROPERTY PERFORMANCE.

