

3 STONE 2 VALLEY 3 ROAD 6 WEST

ALAMO, CALIFORNIA

- ±13,311 SF building for lease
- Two blocks from I-680
- Great identity & natural light
- Mt. Diablo views
- Adjacent to Alamo Plaza



CONTACT FOR LEASING

MITCH HERTZ
925 274 2803
Mitch.Hertz@cushwake.com
LIC#01161729

BRIAN R. WILSON
925 274 2814
Brian.R.Wilson@cushwake.com
LIC#02053208

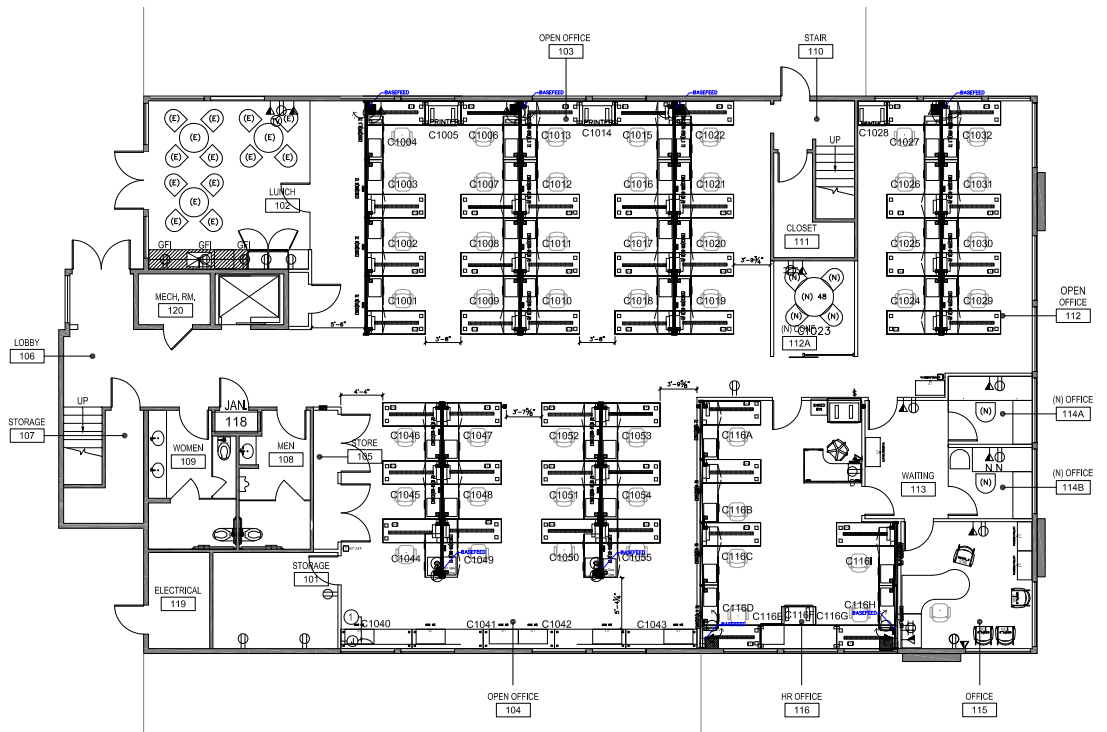
 **CUSHMAN &
WAKEFIELD**



FLOOR PLANS

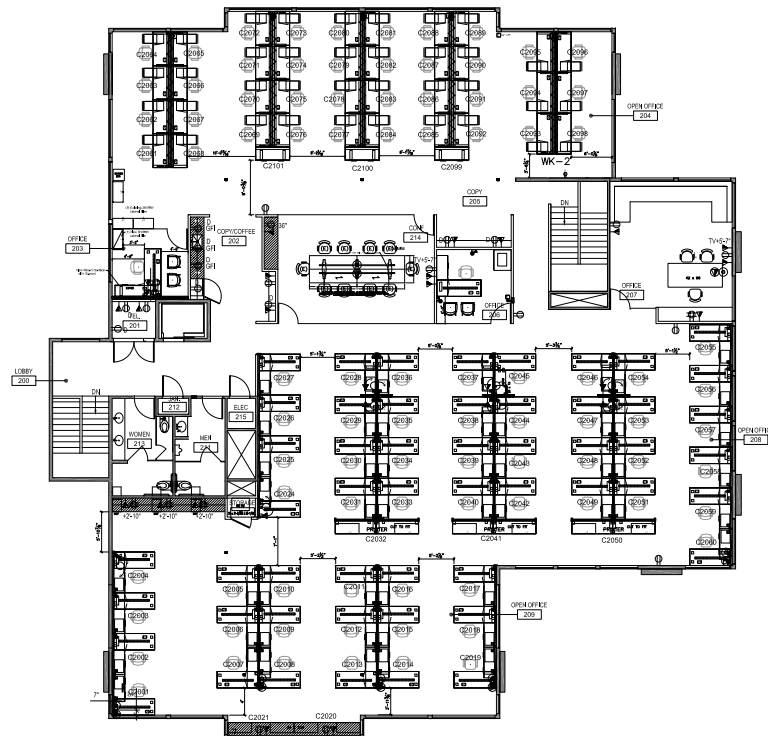
FIRST FLOOR

>> ±5,119 SF



SECOND FLOOR

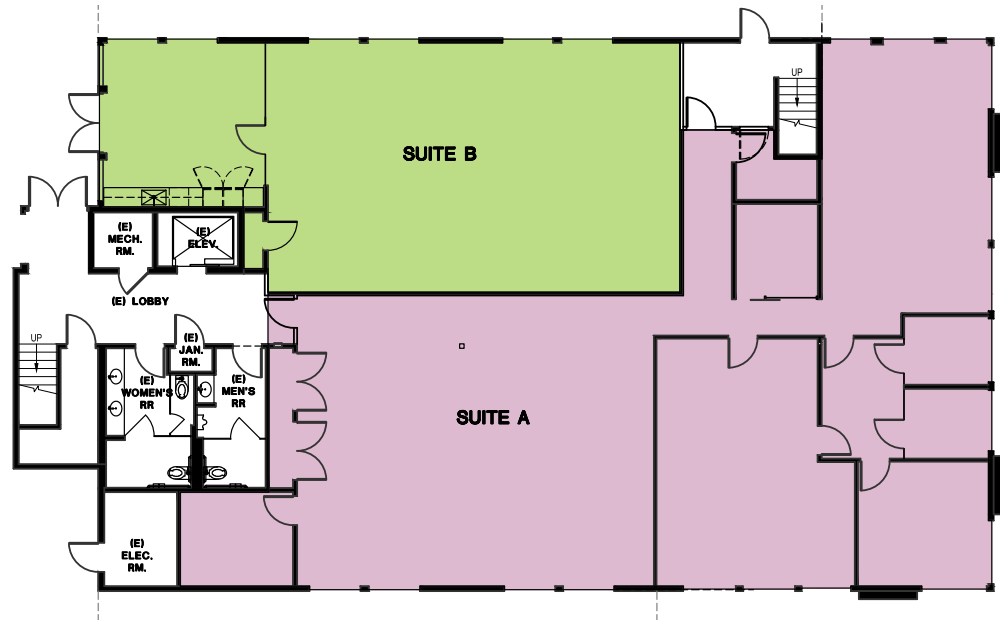
>> ±8,192 SF



MULTI-TENANT PLANS

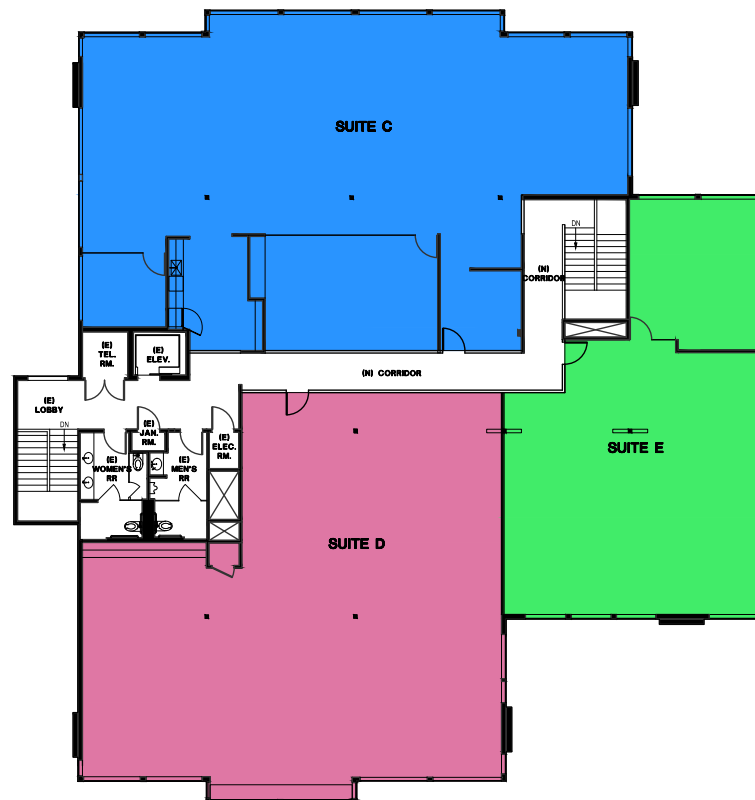
FIRST FLOOR

- >> Total: ±5,119 SF
- >> Suite A: ±3,483 SF
- >> Suite B: ±1,636 SF



SECOND FLOOR

- >> Total: ±8,192 SF
- >> Suite C: ±3,383 SF
- >> Suite D: ±2,982 SF
- >> Suite E: ±1,827 SF



LOCAL AMENITIES

RESTAURANTS

- 1 Alamo Palace Restaurant
- 2 Bagel Street Café
- 3 Brass Bear Deli
- 4 E.J. Phair Brewing Company
Coming Soon
- 5 Five Guys
- 6 Great Donuts
- 7 Ha-La Sushi
- 8 High Tech Burrito
- 9 Katrina Rozelle Pastries & Desserts
- 10 Panera Bread
- 11 Peet's Coffee & Tea
- 12 Round Table Pizza
- 13 XENIA! Bistro

HEALTH & BEAUTY

- 14 24 Hour Fitness
- 15 Ciao Bella Salon
- 16 East-West Kung Fu
- 17 Fantastic Sams
- 18 Majestic Nails & Spa
- 19 Orangetheory Fitness
- 20 The Lash Lounge
- 21 W Salon Suites
- 22 Diablo Valley Health Center
- 23 Poplar Spectacles Optometry
- 24 Stone Valley Dental
- 25 The Spine

GENERAL AMENITIES

- 26 Rite Aid
- 27 Safeway
- 28 Bank of America
- 29 Wells Fargo Bank
- 30 Chevron Service Station
- 31 Office of the Sheriff (Valley Station)
- 32 U.S. Post Office
- 33 Verizon
- 34 CVS
- 35 Shell Service Station



CONTACT FOR LEASING

MITCH HERTZ

925 274 2803

Mitch.Hertz@cushwake.com

LIC#01161729

BRIAN R. WILSON

925 274 2814

Brian.R.Wilson@cushwake.com

LIC#02053208



**CUSHMAN &
WAKEFIELD**



©2018 Cushman & Wakefield. All rights reserved. The information contained in this communication is strictly confidential. This information has been obtained from sources believed to be reliable but has not been verified. NO WARRANTY OR REPRESENTATION, EXPRESS OR IMPLIED, IS MADE AS TO THE CONDITION OF THE PROPERTY (OR PROPERTIES) REFERENCED HEREIN OR AS TO THE ACCURACY OR COMPLETENESS OF THE INFORMATION CONTAINED HEREIN, AND SAME IS SUBMITTED SUBJECT TO ERRORS, OMISSIONS, CHANGE OF PRICE, RENTAL OR OTHER CONDITIONS, WITHDRAWAL WITHOUT NOTICE, AND TO ANY SPECIAL LISTING CONDITIONS IMPOSED BY THE PROPERTY OWNER(S). ANY PROJECTIONS, OPINIONS OR ESTIMATES ARE SUBJECT TO UNCERTAINTY AND DO NOT SIGNIFY CURRENT OR FUTURE PROPERTY PERFORMANCE.