

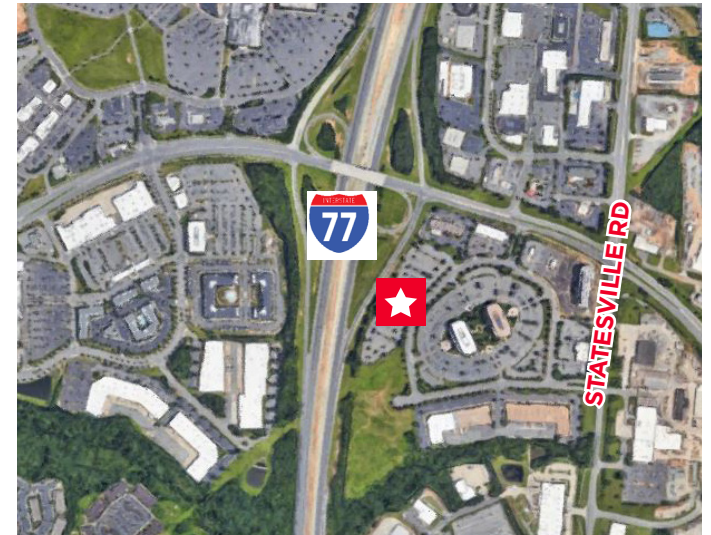


**11,924 RSF FOR SUBLEASE**

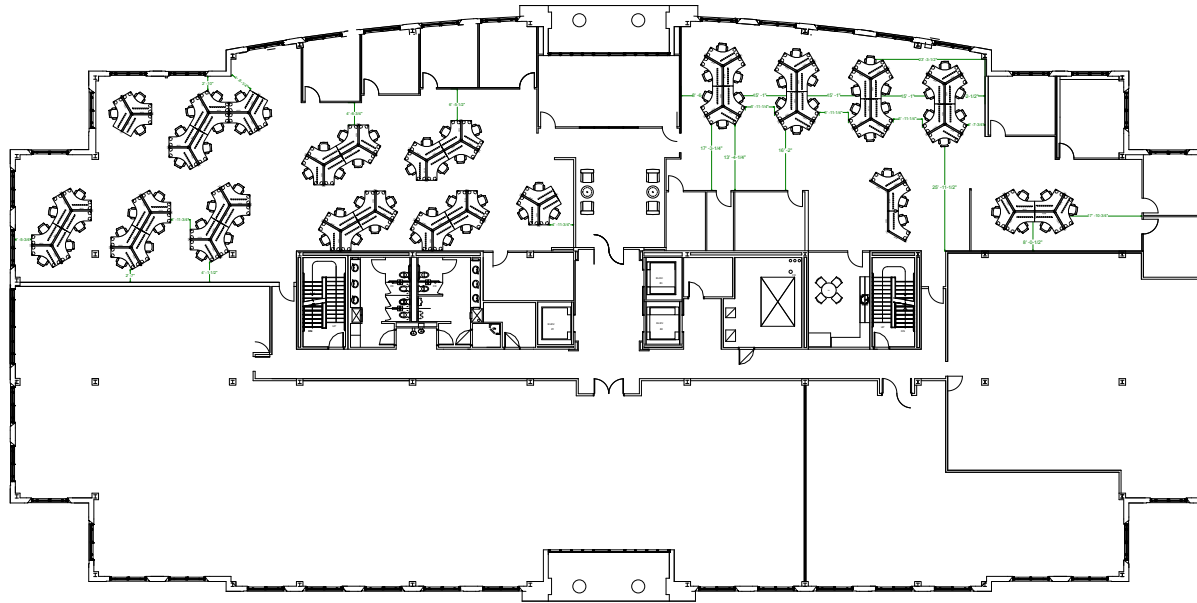
## Property Highlights

- Suite 200
- Sublease through June 30, 2024
- Double door glass entry off elevator lobby
- Floor to ceiling windows throughout premises
- High end furniture negotiable
- Call for asking rate

**MIKE KEMMET**  
Executive Managing Director  
+1 704 335 4438  
mike.kemmet@cushwake.com



**Floor Plan**



---

**MIKE KEMMET**  
Executive Managing Director  
+1 704 335 4438  
[mike.kemmet@cushwake.com](mailto:mike.kemmet@cushwake.com)

