

# 205 REGENCY EXECUTIVE PARK DR

Suite 500, Charlotte, North Carolina 28217

**NEW REDUCED RATE!!!**

**FOR SUBLEASE**



**10,290 SF AVAILABLE**



**MATT BOWEN**  
Managing Director  
+1 803 603 1926  
matt.bowen@cushwake.com



**ERIC DONALDSON**  
Senior Associate  
+1 540 481 7307  
eric.donaldson@cushwake.com

 **CUSHMAN &  
WAKEFIELD**

# 205 REGENCY EXECUTIVE PARK DR

Suite 500, Charlotte, North Carolina 28217

10,290 SF

FOR SUBLEASE



## PROPERTY INFORMATION



10,290 SF



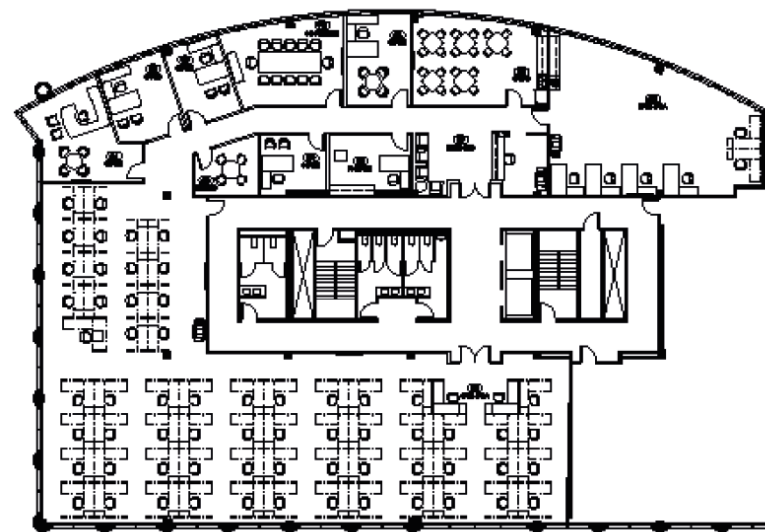
- 82 CUBICLES
- 6 PRIVATE OFFICES
- BREAK AREA
- TRAINING ROOM
- RECEPTION



LXP 4/30/27



RATE: \$17.00/FS



# 205 REGENCY EXECUTIVE PARK DR

Suite 500, Charlotte, North Carolina 28217

FOR SUBLEASE



 **CUSHMAN & WAKEFIELD**

For more information, you may contact:



**MATT BOWEN**  
Managing Director  
+1 803 603 1926  
matt.bowen@cushwake.com



**ERIC DONALDSON**  
Senior Associate  
+1 540 481 7307  
eric.donaldson@cushwake.com

300 South Tryon St., Suite 1110  
Charlotte, NC 28202  
+1 704 375 7771  
[cushmanwakefield.com](http://cushmanwakefield.com)

©2024 Cushman & Wakefield. All rights reserved. The information contained in this communication is strictly confidential. This information has been obtained from sources believed to be reliable but has not been verified. NO WARRANTY OR REPRESENTATION, EXPRESS OR IMPLIED, IS MADE AS TO THE CONDITION OF THE PROPERTY (OR PROPERTIES) REFERENCED HEREIN OR AS TO THE ACCURACY OR COMPLETENESS OF THE INFORMATION CONTAINED HEREIN, AND SAME IS SUBMITTED SUBJECT TO ERRORS, OMISSIONS, CHANGE OF PRICE, RENTAL OR OTHER CONDITIONS, WITHDRAWAL WITHOUT NOTICE, AND TO ANY SPECIAL LISTING CONDITIONS IMPOSED BY THE PROPERTY OWNER(S). ANY PROJECTIONS, OPINIONS OR ESTIMATES ARE SUBJECT TO UNCERTAINTY AND DO NOT SIGNIFY CURRENT OR FUTURE PROPERTY PERFORMANCE.