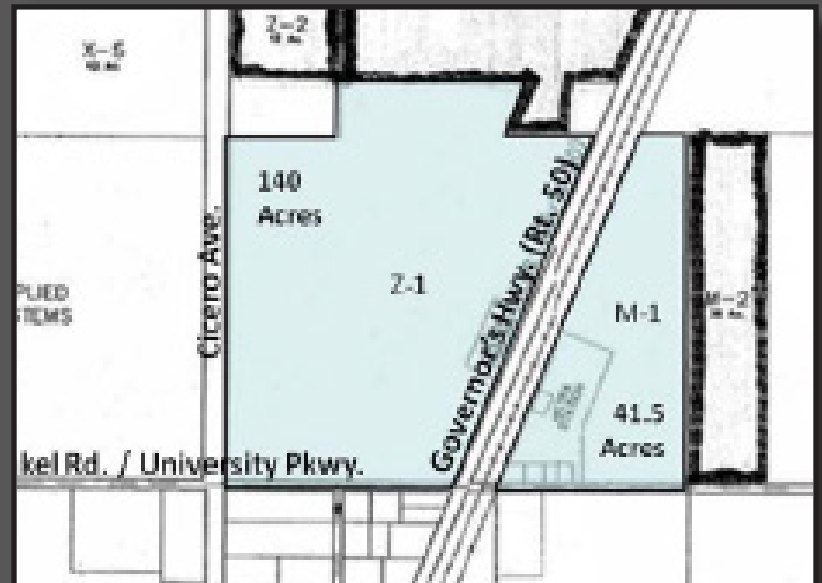
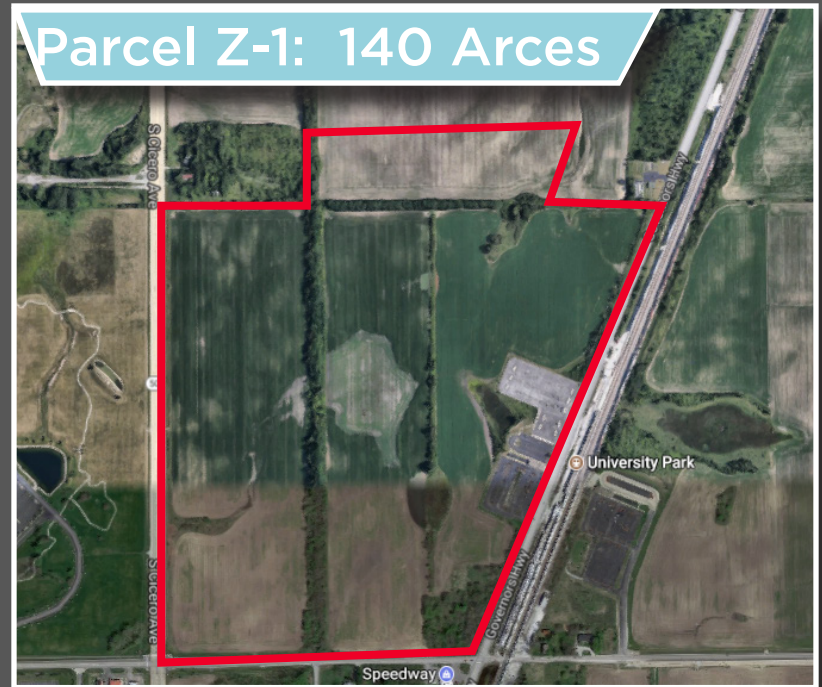


UNIVERSITY PARK

LAND FOR SALE AT NEW I-57 INTERCHANGE

Two Parcels in Will County

- 181.50 +/- Acres for Development
- Adjacent to University Park Metra Station
- 1.3 Miles East of New Interchange at Stuenkel Rd. / University Pkwy.
- Parcels Divided by Metra



UNIVERSITY PARK

Zoning

- Parcel Z-1 :
 - Majority Zoned I (Industrial and Commerical)
 - Portion Zoned B-2 (Community Shopping)
 - Located in the Will Cook Enterprise Zone
- Parcel M-1:
 - Majority Zoned R-4 (Multi-Family)
 - Portion Zoned B-2 (Community Shopping)

