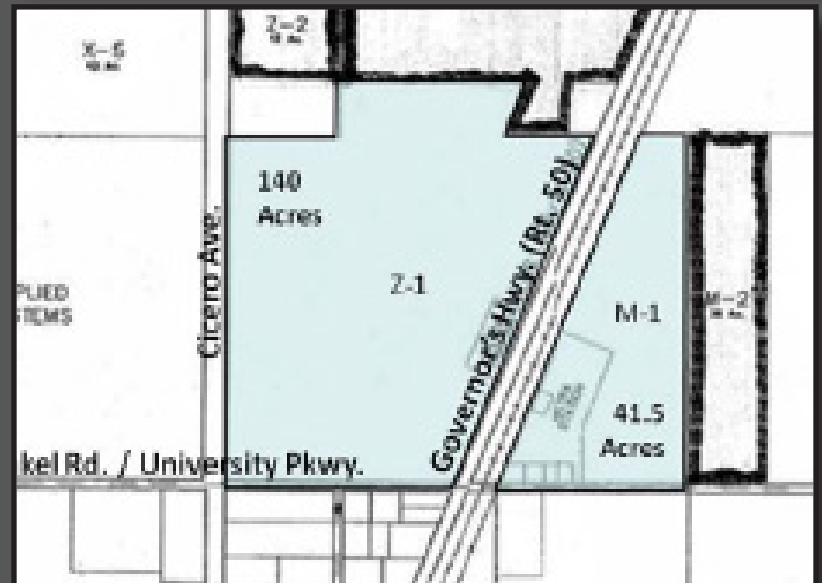
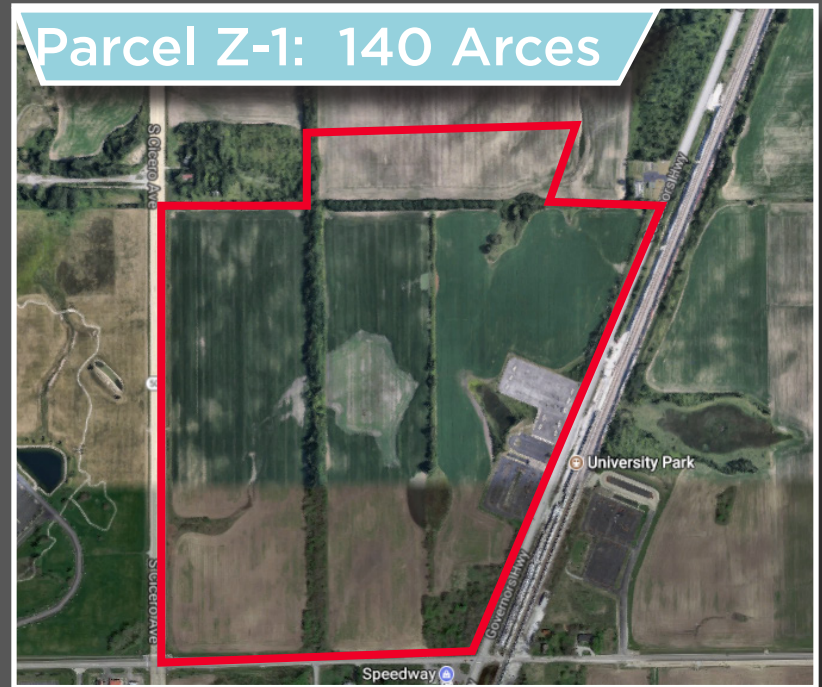


# UNIVERSITY PARK

## LAND FOR SALE AT NEW I-57 INTERCHANGE

### Two Parcels in Will County

- 181.50 +/- Acres for Development
- Adjacent to University Park Metra Station
- 1.3 Miles East of New Interchange at Stuenkel Rd. / University Pkwy.
- Parcels Divided by Metra



# UNIVERSITY PARK

## Zoning

- Parcel Z-1 :
  - Majority Zoned I (Industrial and Commerical)
  - Portion Zoned B-2 (Community Shopping)
  - Located in the Will Cook Enterprise Zone
- Parcel M-1:
  - Majority Zoned R-4 (Multi-Family)
  - Portion Zoned B-2 (Community Shopping)

