



26,837 SF AVAILABLE FOR SALE

# 1855 S. KILBOURN AVENUE

## CHICAGO, ILLINOIS



# 1855 S. KILBOURN AVENUE CHICAGO, ILLINOIS

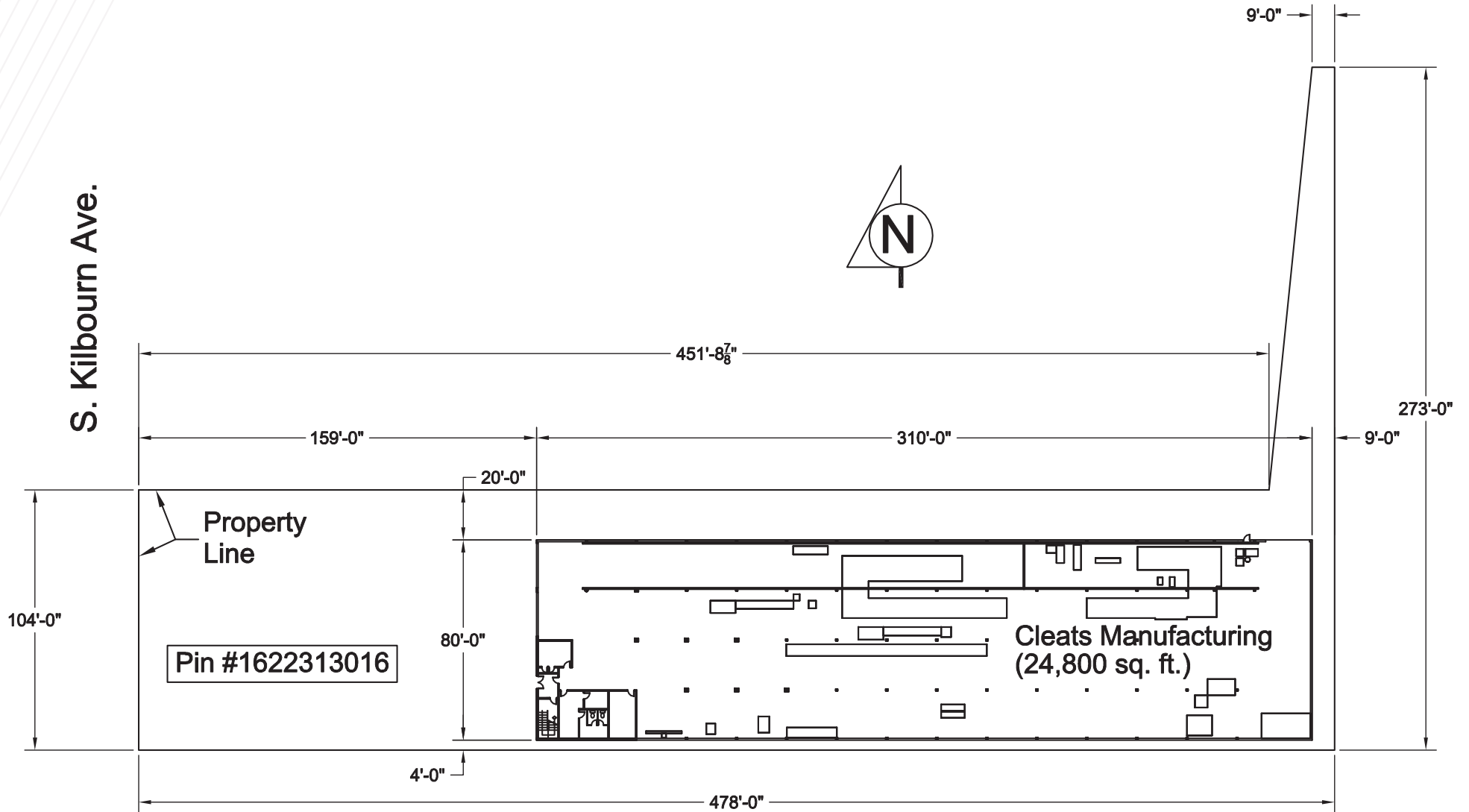
## Property Features

Available Size:	26,837 SF
Office Size:	2,500 SF
Site Size:	1.15 Acres
Built:	1956
Clear Height:	14'-21'
Drive-In-Doors:	3 (Crane in each Bay)
Car Parking:	+25 Spaces
Power:	600 Amps @ 240/480 Volts
Column Spacing:	19' x 19'
Sprinkler:	Wet
Sale Price:	\$1,677,312.50 (\$62.50 PSF)
Comments:	<ul style="list-style-type: none"><li>• Rare Free Standing Facility</li><li>• Crane Served Facility</li><li>• Four 5-Ton Cranes</li><li>• Fenced Secured Parking Lot</li><li>• Heavy Parking or Outside Storage</li><li>• Manufacturing Amenities</li></ul>

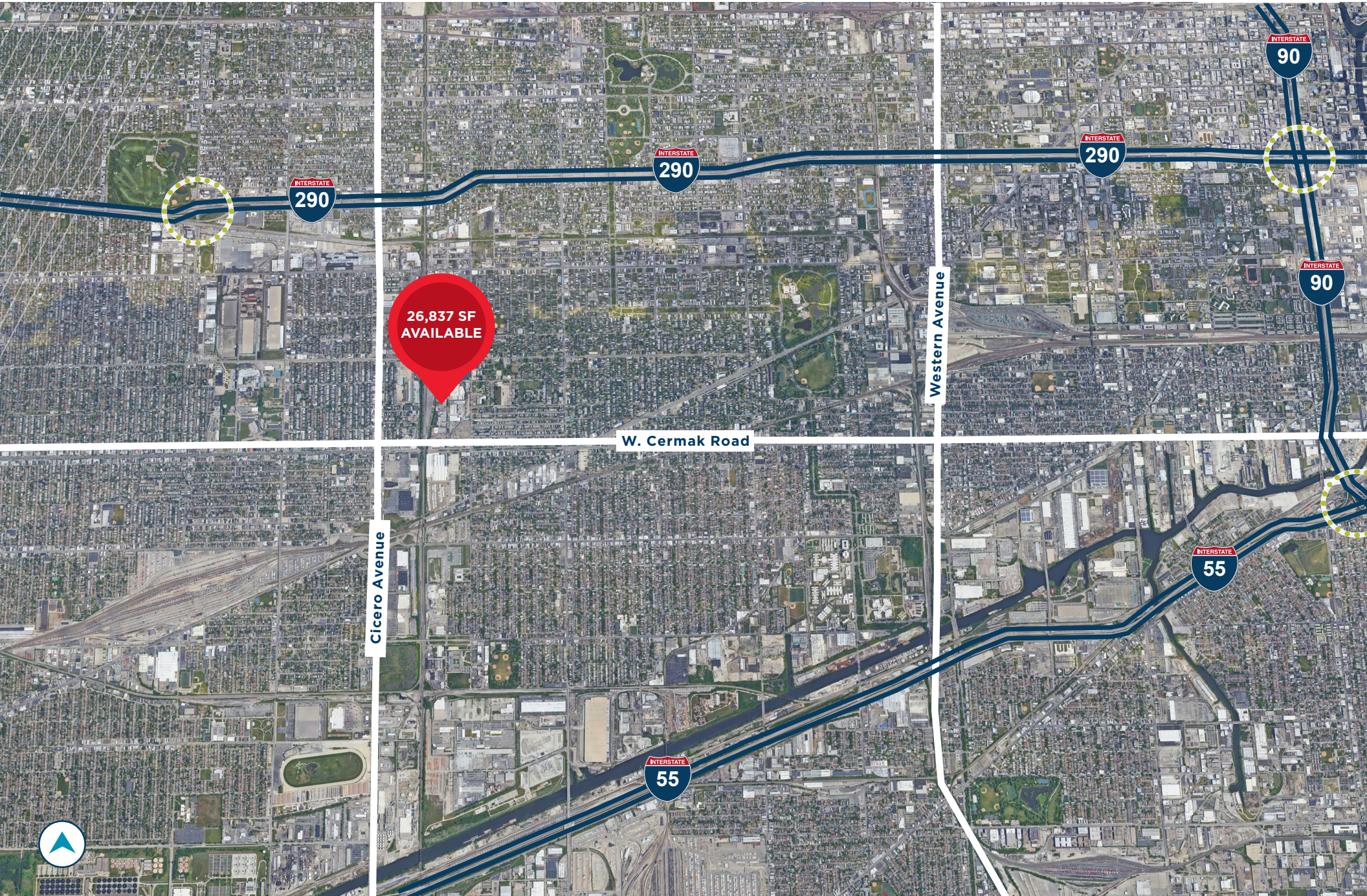


# 1855 S. KILBOURN AVENUE CHICAGO, ILLINOIS

## Floor Plan



# 1855 S. KILBOURN AVENUE CHICAGO, ILLINOIS



26,837 SF  
AVAILABLE

Cicero Avenue

W. Cermak Road

Western Avenue





**FOR MORE INFORMATION, CONTACT:**

**MICHAEL MAGLIANO**

Executive Managing Director  
847.518.3259  
michael.magliano@cushwake.com

**IVAN RAVELO**

Associate  
312.424.8148  
ivan.ravello@cushwake.com

**SALLY MACOICZ**

Managing Director  
312.470.1823  
sally.macoicz@cushwake.com

©2020 Cushman & Wakefield. All rights reserved. The material in this presentation has been prepared solely for information purposes, and is strictly confidential. Any disclosure, use, copying or circulation of this presentation (or the information contained within it) is strictly prohibited, unless you have obtained Cushman & Wakefield's prior written consent. The views expressed in this presentation are the views of the author and do not necessarily reflect the views of Cushman & Wakefield. Neither this presentation nor any part of it shall form the basis of, or be relied upon in connection with any offer, or act as an inducement to enter into any contract or commitment whatsoever. NO REPRESENTATION OR WARRANTY IS GIVEN, EXPRESS OR IMPLIED, AS TO THE ACCURACY OF THE INFORMATION CONTAINED WITHIN THIS PRESENTATION, AND CUSHMAN & WAKEFIELD IS UNDER NO OBLIGATION TO SUBSEQUENTLY CORRECT IT IN THE EVENT OF ERRORS.

