



FOR SUBLEASE

5847 SAN FELIPE
HOUSTON, TEXAS

SAN FELIPE PLAZA

Suite 2030
2,535 SF

PROPERTY HIGHLIGHTS

The heart of San Felipe Tower is a recently renovated, three-story lobby incorporating marble, granite and exotic wood finishes plus an open, second floor mezzanine. Tenants and guest enjoy access to a multitude of onsite amenities and abundant, activated greenspace with mature trees surrounding the property.

- Prestigious location in the heart of the Galleria
- Upscale retail & restaurants
- Conveniently located hotels

1330 Post Oak Blvd #2700,
Houston, TX 77056
Main +1 713 877 1700
cushmanwakefield.com



Lobby



Starbucks Kiosk



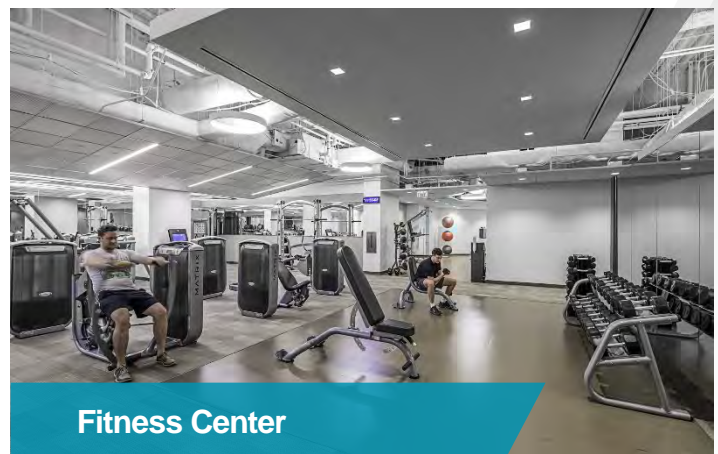
Conference Center



Café

BUILDING AMENITIES

- Conference & Collaborative Center
- Lobby Banking Facility
- Starbucks Kiosk
- Casual Dining Options
- Fitness Center
- Shoeshine & Dry Cleaning



Fitness Center

Contact

COOPER BAGHERI
Tenant Representation
Direct: +1 713-331-1805
Mobile: +1 713-566-0526
cooper.bagheri@cushwake.com

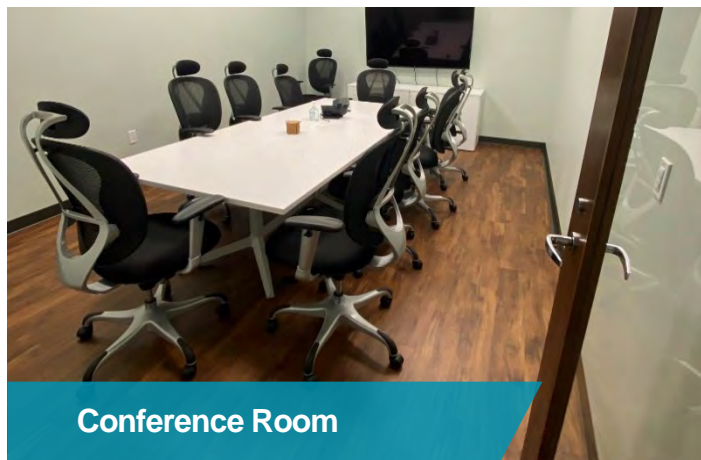
FOR SUBLEASE
San Felipe Plaza | Suite 2030 - 2,535 SF



Office



Office



Conference Room



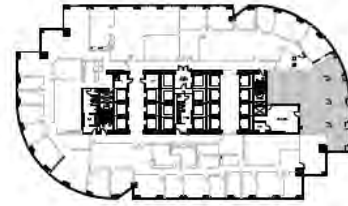
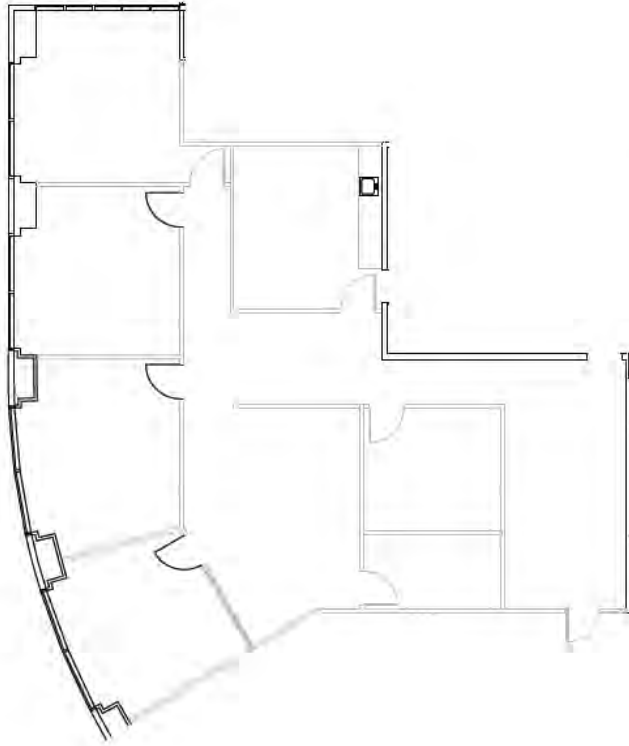
Kitchen

SPACE ECONOMICS

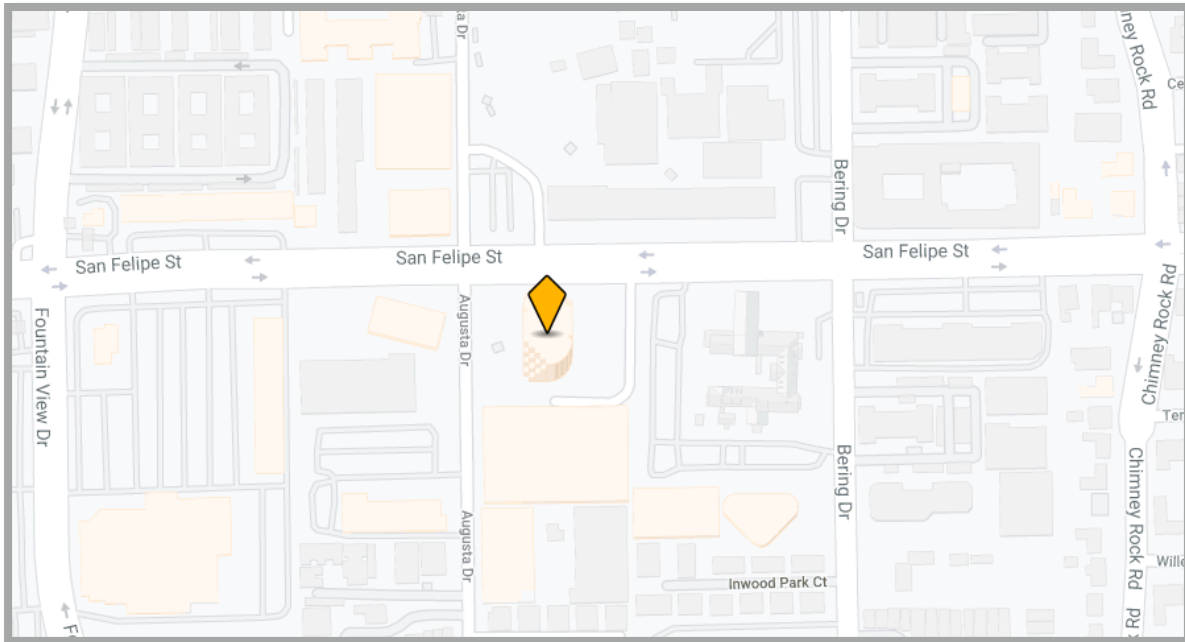
Premises	2,535 SF
Availability	Immediately
Term	July 31, 2026
Rental Rate	Negotiable
OpEx	\$16.41

Contact

COOPER BAGHERI
Tenant Representation
Direct: +1 713-331-1805
Mobile: +1 713-566-0526
cooper.bagheri@cushwake.com



Suite 2030 | 2,535 SF



Contact

COOPER BAGHERI
Tenant Representation
Direct: +1 713-331-1805
Mobile: +1 713-566-0526
cooper.bagheri@cushwake.com