

FOR SUBLEASE

# DANA MARINA PLAZA

24901 DANA POINT HARBOR DRIVE  
DANA POINT, CA 92629



## 55,457 SF RETAIL / OFFICE PROJECT

- Iconic 5-building project located in the heart of Dana Point Harbor
- Flexibility within potential uses
- Beautiful outdoor common areas
- Excellent signage opportunities with unparalleled visibility
- Proximity to amenities & food services including walking distance to marina
- On-site ATM
- Ocean views

Offered exclusively by:

*RETAIL*

**CHAD R. IAFRATE, CCIM**  
+1 760 431 4234  
chad.iafrate@cushwake.com  
LIC #01484290

*OFFICE*

**BROOKS CAMPBELL**  
+1 760 431 4215  
brooks.campbell@cushwake.com  
LIC #01380901

**OWEN CURRY**  
+1 760 415 3052  
owen.curry@cushwake.com  
LIC #01972528

Owned by:



**CUSHMAN & WAKEFIELD**

# DANA MARINA PLAZA

24901 - 25001 DANA POINT HARBOR DRIVE, DANA POINT, CA 92629

## AVAILABILITIES

LEASE RATE: \$3.48/RSF NNN (NNN = APPROX. \$0.79/SF)

Suite #	RSF	Available	Comments
24921 - Suite B200	1,611*	Immediate	Office
24921 - Suite B205	2,659*	Immediate	Office
24921 - Suite 210B	2,511*	Immediate	Office

\*Suites can be contiguous for 4,270 - 6,781



Offered exclusively by:

*RETAIL*

**CHAD R. IAFRATE, CCIM**  
+1 760 431 4234  
chad.iafrate@cushwake.com  
LIC #01484290

*OFFICE*

**BROOKS CAMPBELL**  
+1 760 431 4215  
brooks.campbell@cushwake.com  
LIC #01380901

**OWEN CURRY**  
+1 760 415 3052  
owen.curry@cushwake.com  
LIC #01972528

 **CUSHMAN &  
WAKEFIELD**

# DANA MARINA PLAZA

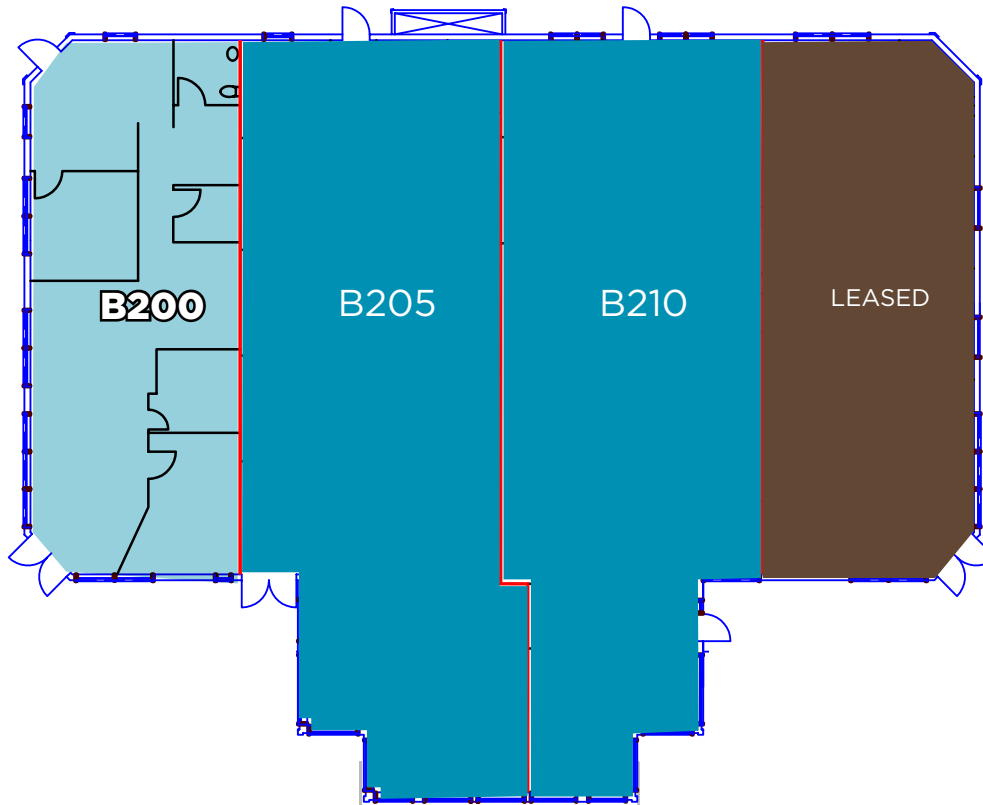
24901 - 25001 DANA POINT HARBOR DRIVE, DANA POINT, CA 92629

## FLOOR PLANS

24921 Building

*Second Floor*

Suite B200  
1,610 RSF



Offered exclusively by:

*RETAIL*

**CHAD R. IAFRATE, CCIM**  
+1 760 431 4234  
chad.iafrate@cushwake.com  
LIC #01484290

*OFFICE*

**BROOKS CAMPBELL**  
+1 760 431 4215  
brooks.campbell@cushwake.com  
LIC #01380901

**OWEN CURRY**  
+1 760 415 3052  
owen.curry@cushwake.com  
LIC #01972528

 **CUSHMAN &  
WAKEFIELD**

# DANA MARINA PLAZA

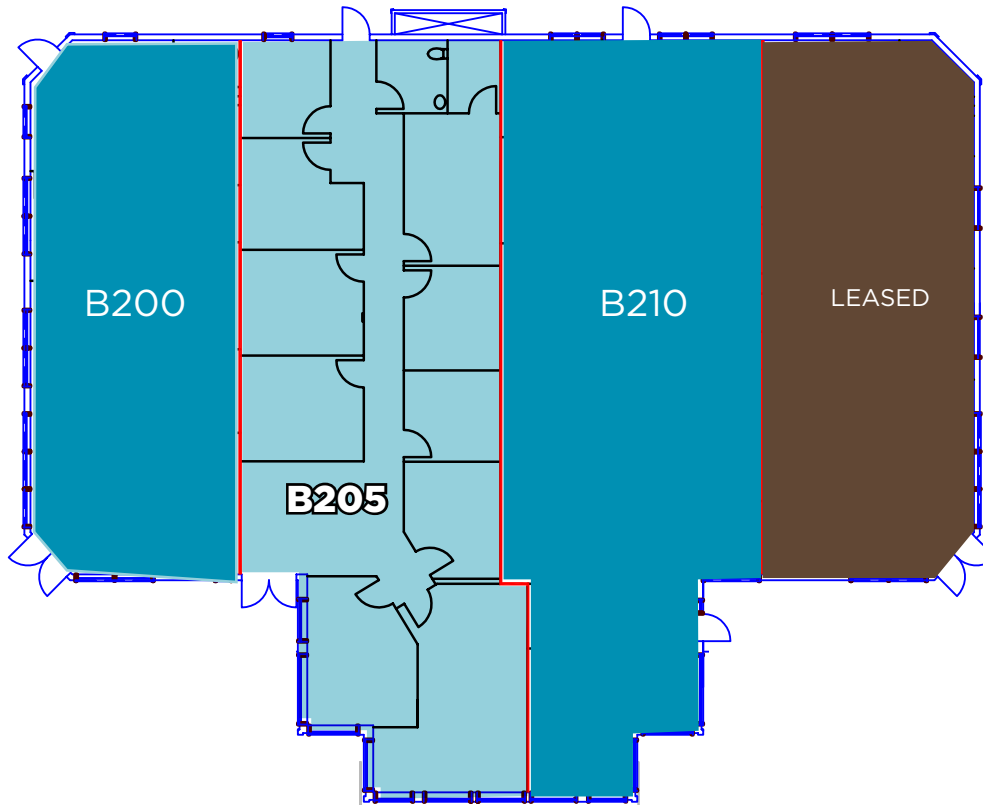
24901 - 25001 DANA POINT HARBOR DRIVE, DANA POINT, CA 92629

## FLOOR PLANS

24921 Building

*Second Floor*

Suite B205  
2,659 RSF



Offered exclusively by:

*RETAIL*

**CHAD R. IAFRATE, CCIM**  
+1 760 431 4234  
chad.iafrate@cushwake.com  
LIC #01484290

*OFFICE*

**BROOKS CAMPBELL**  
+1 760 431 4215  
brooks.campbell@cushwake.com  
LIC #01380901

**OWEN CURRY**  
+1 760 415 3052  
owen.curry@cushwake.com  
LIC #01972528

 **CUSHMAN &  
WAKEFIELD**

# DANA MARINA PLAZA

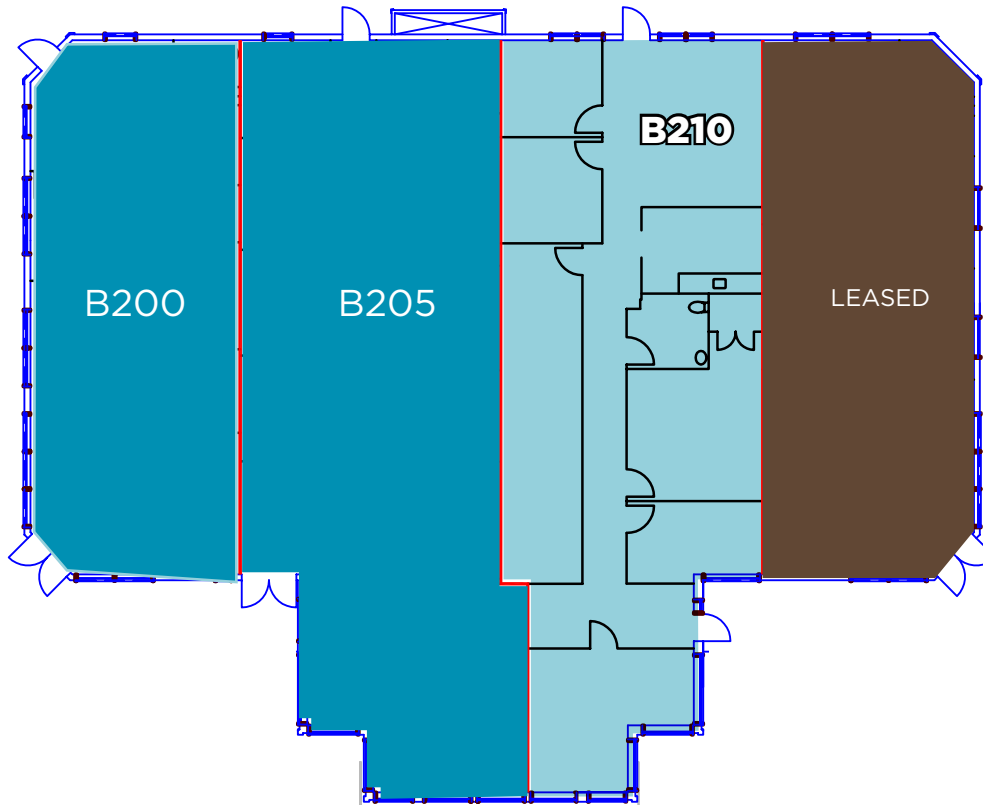
24901 - 25001 DANA POINT HARBOR DRIVE, DANA POINT, CA 92629

## FLOOR PLANS

24921 Building

*Second Floor*

Suite B210  
2,511 RSF



Offered exclusively by:

*RETAIL*

**CHAD R. IAFRATE, CCIM**  
+1 760 431 4234  
chad.iafrate@cushwake.com  
LIC #01484290

*OFFICE*

**BROOKS CAMPBELL**  
+1 760 431 4215  
brooks.campbell@cushwake.com  
LIC #01380901

**OWEN CURRY**  
+1 760 415 3052  
owen.curry@cushwake.com  
LIC #01972528

 **CUSHMAN &  
WAKEFIELD**

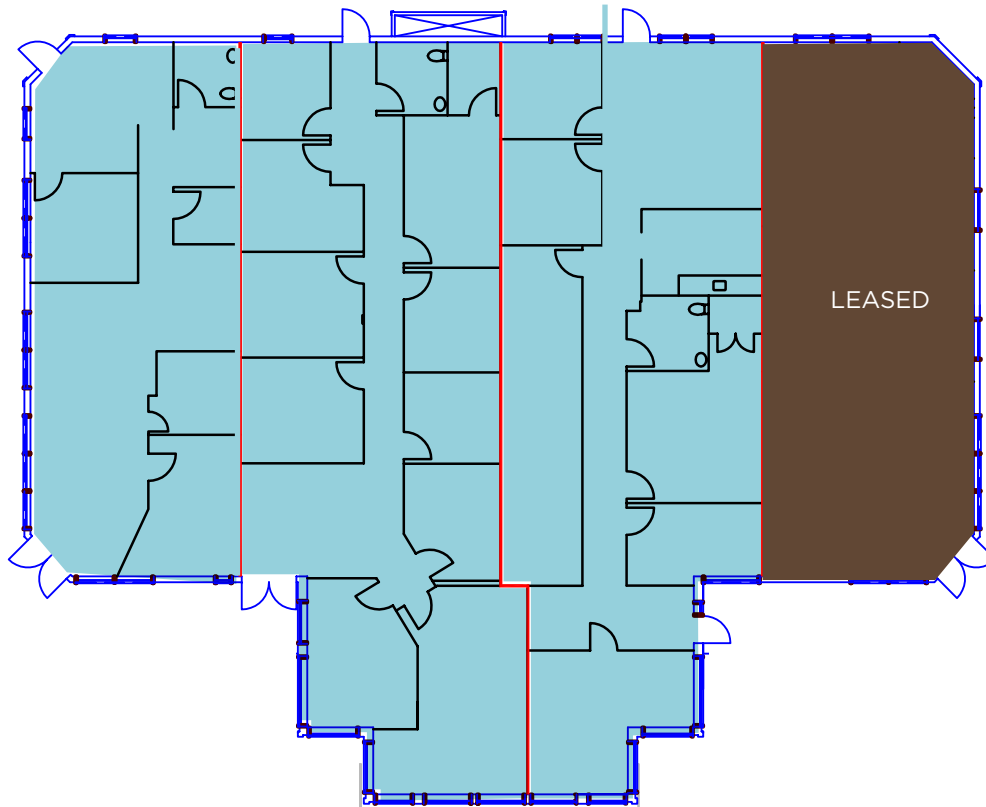
# DANA MARINA PLAZA

24901 - 25001 DANA POINT HARBOR DRIVE, DANA POINT, CA 92629

## FLOOR PLANS

24921 Building

Second Floor  
Suites B200 - B210  
6,781 RSF



Offered exclusively by:

*RETAIL*

**CHAD R. IAFRATE, CCIM**  
+1 760 431 4234  
chad.iafrate@cushwake.com  
LIC #01484290

*OFFICE*

**BROOKS CAMPBELL**  
+1 760 431 4215  
brooks.campbell@cushwake.com  
LIC #01380901

**OWEN CURRY**  
+1 760 415 3052  
owen.curry@cushwake.com  
LIC #01972528

 **CUSHMAN &  
WAKEFIELD**



GOLDEN LANTERN ST.

DANA POINT HARBOR DRIVE



DANA POINT HARBOR DRIVE

GOLDEN LANTERN ST.

# DANA MARINA PLAZA

24901 - 25001 DANA POINT HARBOR DRIVE, DANA POINT, CA 92629

Owned by:



Offered exclusively by:

**CHAD R. IAFRATE, CCIM**  
+1 760 431 4234  
chad.iafrate@cushwake.com  
LIC #01484290

**BROOKS CAMPBELL**  
+1 760 431 4215  
brooks.campbell@cushwake.com  
LIC #01380901

**OWEN CURRY**  
+1 760 415 3052  
owen.curry@cushwake.com  
LIC #01972528



12830 El Camino Real,  
Suite 100  
San Diego, CA 92130  
P +1 760 431 4200  
F +1 760 454 3869  
cushmanwakefield.com

Cushman & Wakefield Copyright 2024. The information contained herein was lawfully obtained from sources we consider reliable. Cushman & Wakefield is not responsible and expressly disclaims all liability for errors, omissions, prior sales, withdrawal from the market or change in price. Seller (or Lessor, as the case may be) and broker make no representation as to the environmental condition of the property and recommend Purchaser's (or Lessee's) independent investigation.