

FOR SUBLEASE

DANA MARINA PLAZA

24901 DANA POINT HARBOR DRIVE
DANA POINT, CA 92629



55,457 SF RETAIL / OFFICE PROJECT

- Iconic 5-building project located in the heart of Dana Point Harbor
- Flexibility within potential uses
- Beautiful outdoor common areas
- Excellent signage opportunities with unparalleled visibility
- Proximity to amenities & food services including walking distance to marina
- On-site ATM
- Ocean views

Offered exclusively by:

RETAIL

CHAD R. IAFRATE, CCIM
+1 760 431 4234
chad.iafrate@cushwake.com
LIC #01484290

OFFICE

BROOKS CAMPBELL
+1 760 431 4215
brooks.campbell@cushwake.com
LIC #01380901

OWEN CURRY
+1 760 415 3052
owen.curry@cushwake.com
LIC #01972528

Owned by:



DANA MARINA PLAZA

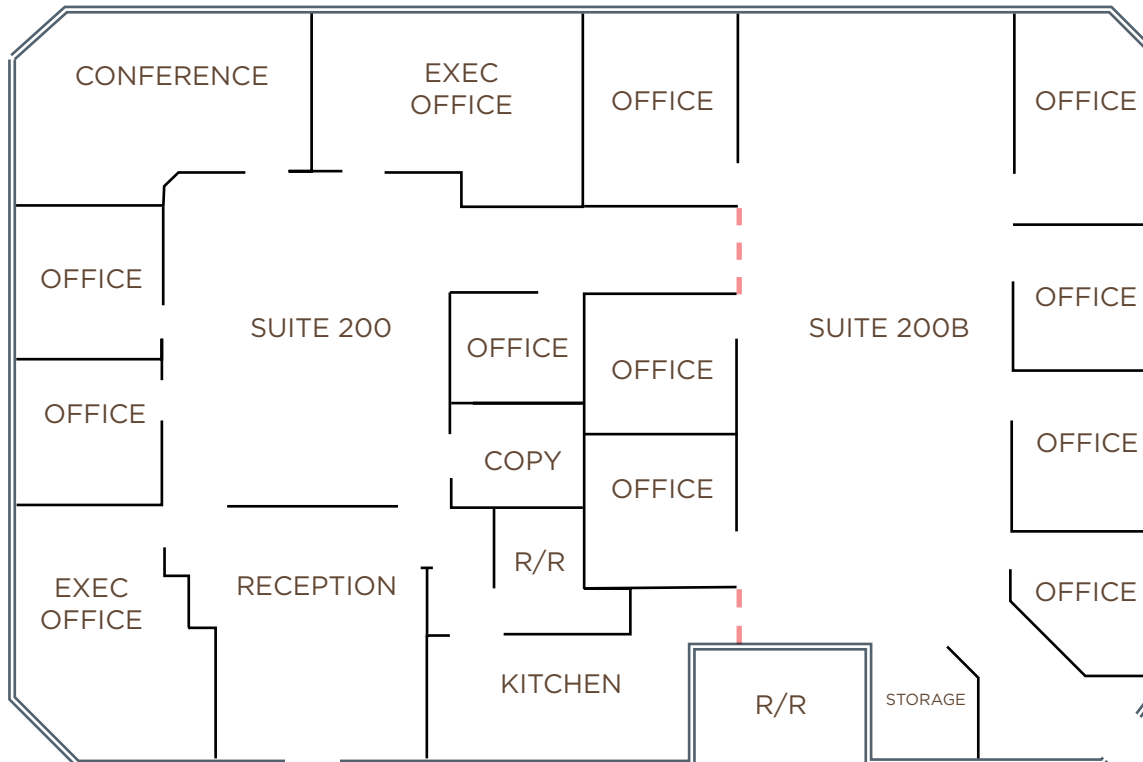
24901 DANA POINT HARBOR DRIVE, DANA POINT, CA 92629

AVAILABILITIES

LEASE RATE: Negotiable

Suite #	RSF	Available	Comments
24901 - Suite 200	3,243	With 30 Days Notice	Office/Retail
24901 - Suite 200B	2,995	January 1, 2025	Office/Retail

*Can be combined for a total of 6,238 RSF



Offered exclusively by:

RETAIL

CHAD R. IAFRATE, CCIM
 +1 760 431 4234
 chad.iafrate@cushwake.com
 LIC #01484290

OFFICE

BROOKS CAMPBELL
 +1 760 431 4215
 brooks.campbell@cushwake.com
 LIC #01380901

OWEN CURRY

+1 760 415 3052
 owen.curry@cushwake.com
 LIC #01972528



DANA MARINA PLAZA

24901 DANA POINT HARBOR DRIVE, DANA POINT, CA 92629

SUITE 200



Offered exclusively by:

RETAIL

CHAD R. IAFRATE, CCIM
+1 760 431 4234
chad.iafrate@cushwake.com
LIC #01484290

OFFICE

BROOKS CAMPBELL
+1 760 431 4215
brooks.campbell@cushwake.com
LIC #01380901

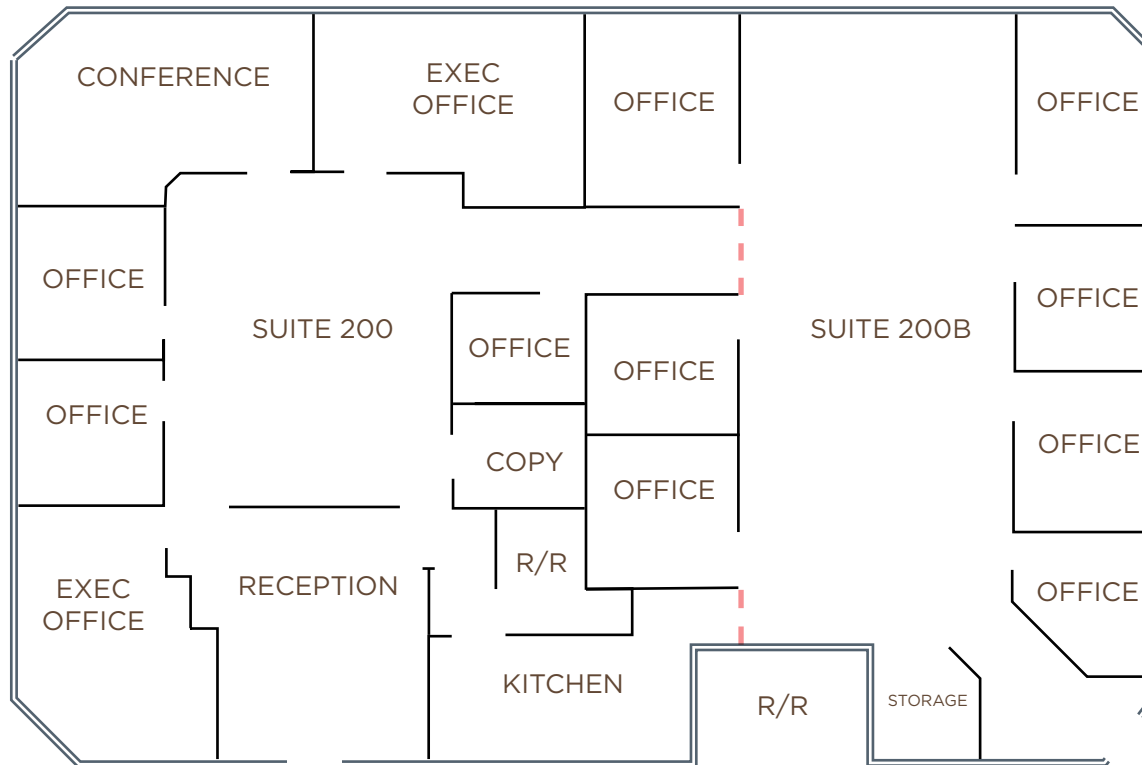
OWEN CURRY
+1 760 415 3052
owen.curry@cushwake.com
LIC #01972528

 **CUSHMAN &
WAKEFIELD**

DANA MARINA PLAZA

24901 DANA POINT HARBOR DRIVE, DANA POINT, CA 92629

SUITE 200



Offered exclusively by:

RETAIL

CHAD R. IAFRATE, CCIM
+1 760 431 4234
chad.iafrate@cushwake.com
LIC #01484290

OFFICE

BROOKS CAMPBELL
+1 760 431 4215
brooks.campbell@cushwake.com
LIC #01380901

OWEN CURRY
+1 760 415 3052
owen.curry@cushwake.com
LIC #01972528

 **CUSHMAN &
WAKEFIELD**



GOLDEN LANTERN ST.

DANA POINT HARBOR DRIVE



DANA POINT HARBOR DRIVE

GOLDEN LANTERN ST.

DANA MARINA PLAZA

24901 - 25001 DANA POINT HARBOR DRIVE, DANA POINT, CA 92629

Owned by:



Offered exclusively by:

CHAD R. IAFRATE, CCIM
+1 760 431 4234
chad.iafrate@cushwake.com
LIC #01484290

BROOKS CAMPBELL
+1 760 431 4215
brooks.campbell@cushwake.com
LIC #01380901

OWEN CURRY
+1 760 415 3052
owen.curry@cushwake.com
LIC #01972528



12830 El Camino Real,
Suite 100
San Diego, CA 92130
P +1 760 431 4200
F +1 760 454 3869
cushmanwakefield.com

Cushman & Wakefield Copyright 2024. The information contained herein was lawfully obtained from sources we consider reliable. Cushman & Wakefield is not responsible and expressly disclaims all liability for errors, omissions, prior sales, withdrawal from the market or change in price. Seller (or Lessor, as the case may be) and broker make no representation as to the environmental condition of the property and recommend Purchaser's (or Lessee's) independent investigation.