

# 3010 OLCOTT STREET

SANTA CLARA | ±14,700 SF FOR LEASE / SALE



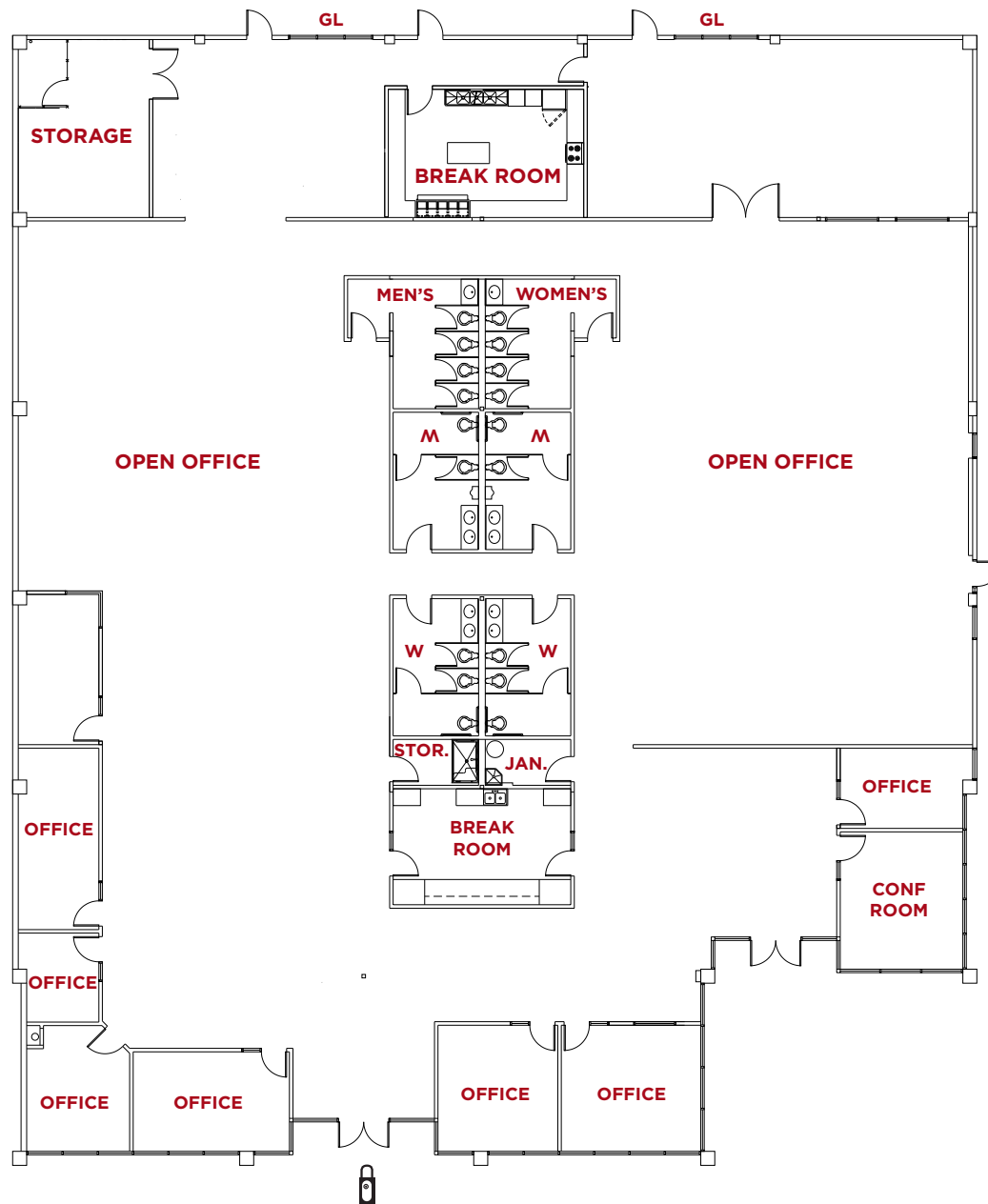
**BRITTAIN CHENEY** | +1 408 615 3402 | [brittain.cheney@cushwake.com](mailto:brittain.cheney@cushwake.com) | LIC #01271132



Cushman & Wakefield Copyright 2020. No warranty or representation, express or implied, is made to the accuracy or completeness of the information contained herein, and same is submitted subject to errors, omissions, change of price, rental or other conditions, withdrawal without notice, and to any special listing conditions imposed by the property owner(s). As applicable, we make no representation as to the condition of the property (or properties) in question.

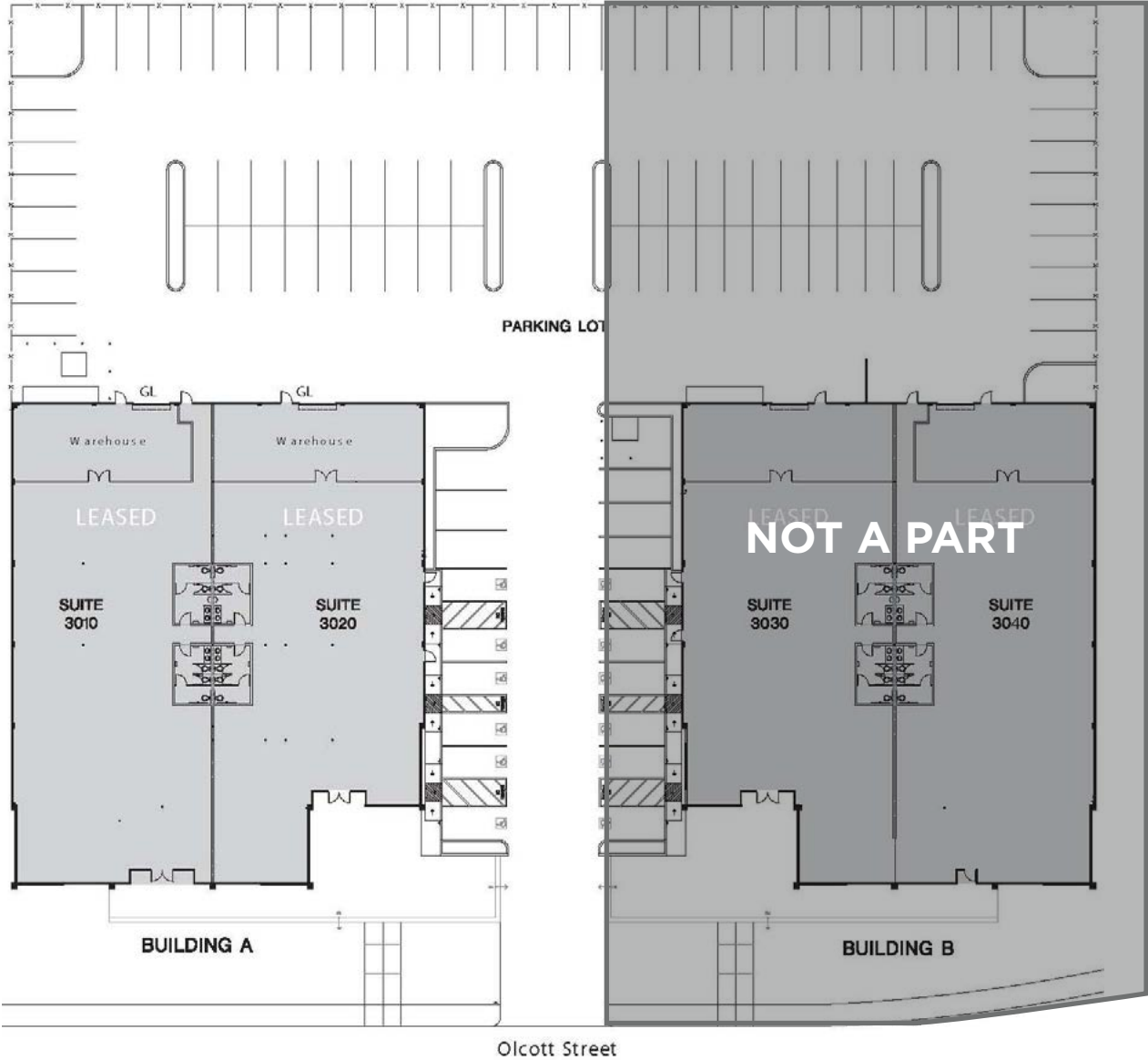
# PROPERTY HIGHLIGHTS

- 14,700 SF R&D for Lease
- High image, single story building
- Expansive Glass Line
- Heavy Power: 1600A @ 480/270V
- Immediate Access to HWY 101, Central & San Tomas Expressways
- 4/1000 Parking
- 2 Grade Level Doors

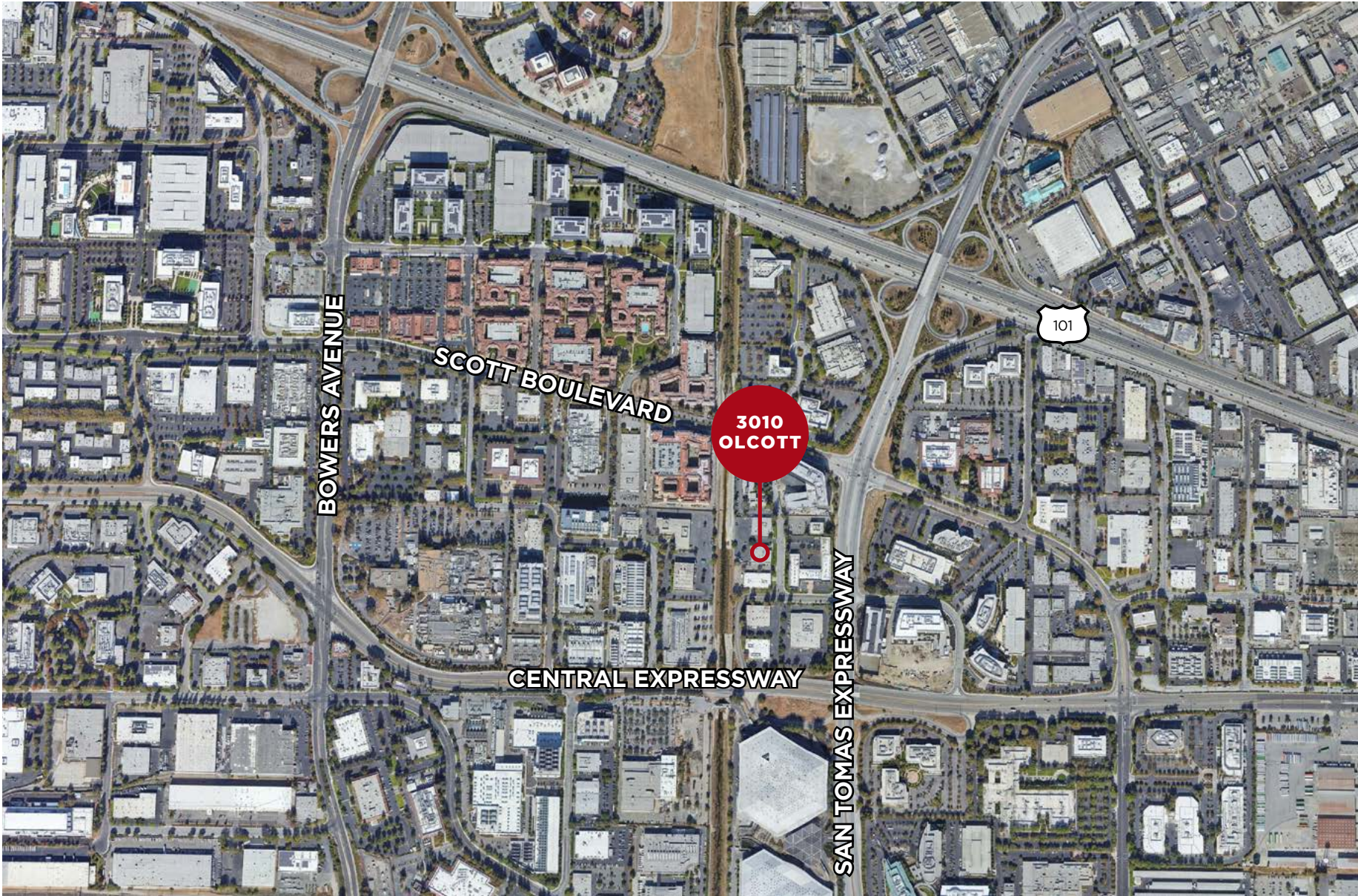


# SITE PLAN

## 3010 OLCOTT



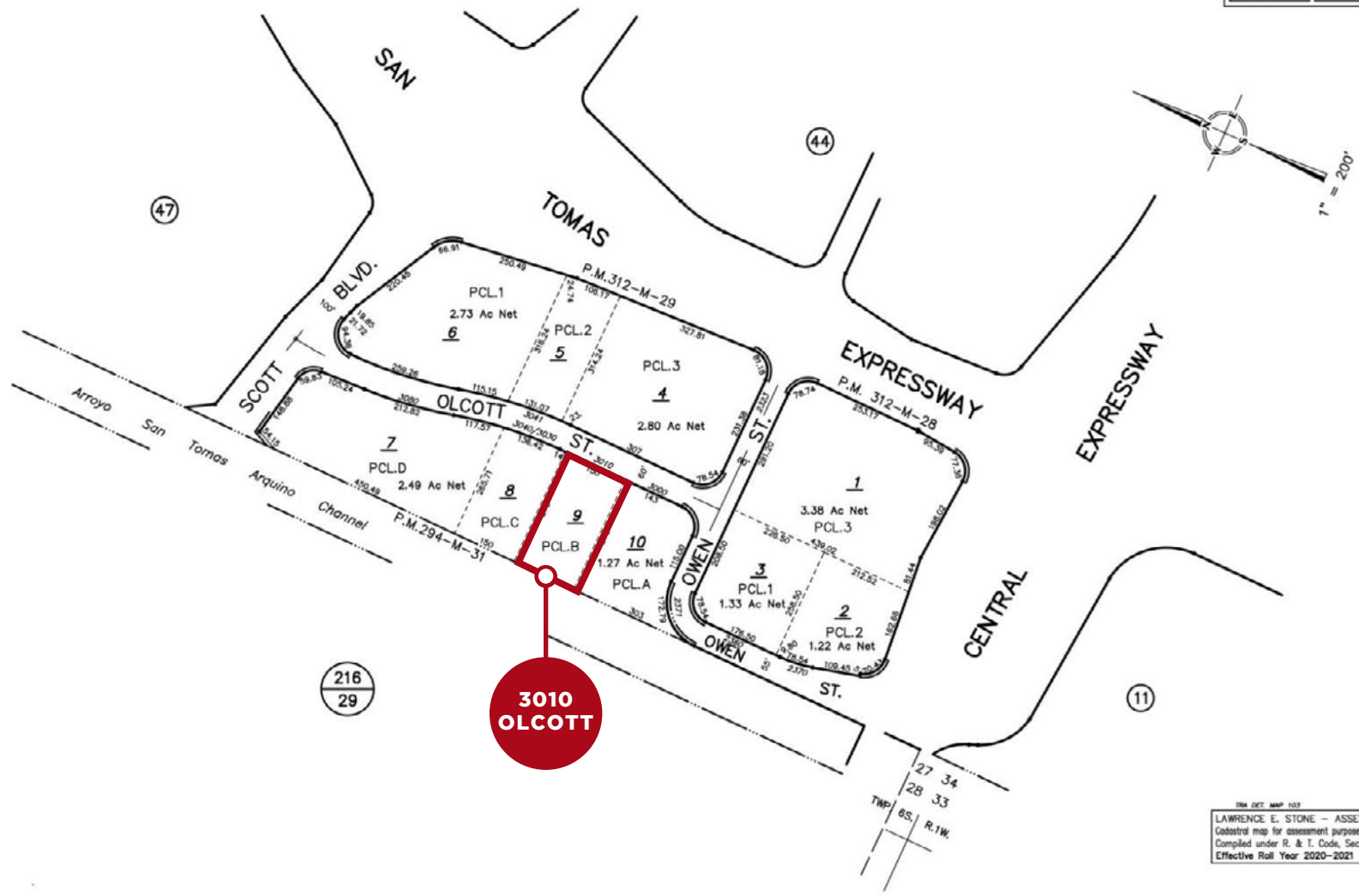
# AERIAL MAP



# PARCEL MAP

OFFICE OF COUNTY ASSESSOR — SANTA CLARA COUNTY, CALIFORNIA

BOOK <b>224</b>	PAGE <b>46</b>
--------------------	-------------------



216  
29

TWA DET. MAP 103  
LAWRENCE E. STONE — ASSESSOR  
Cadastral map for assessment purposes only.  
Compiled under R. & T. Code, Sec. 327.  
Effective Roll Year 2020-2021

# CONNECTIVITY MAP



# AMENITIES MAP

