

FOR SUBLEASE
7041 COMMERCE PARK DRIVE
Midvale, Utah 84047



PROPERTY HIGHLIGHTS

- 2,482 SF Total
- 1,582 SF Warehouse
- 900 SF Office
- 15' Clear Height
- 12x12 Insulated GL Door
- 208 Volt, 125 Amp, 3 Phase
- Close proximity to I-15 and many amenities
- Master Lease Expiration 05/31/2028

Contact

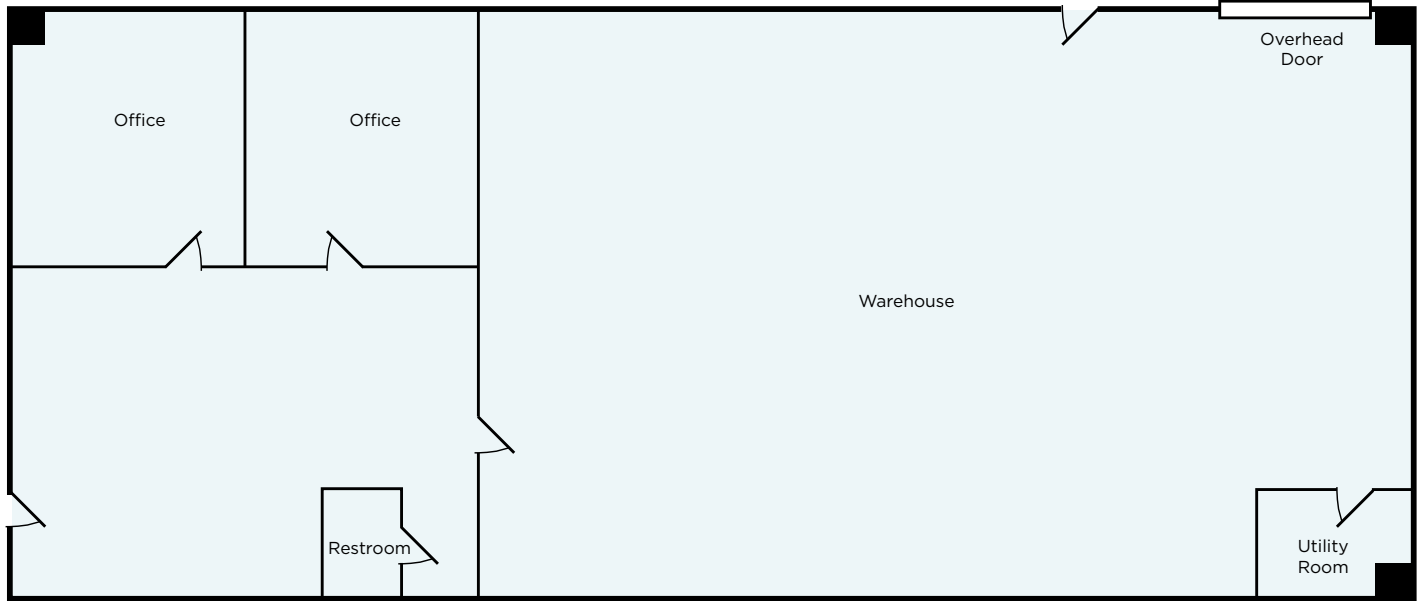
TYSON FOWLER
Senior Associate
+1 801 303 5413
tyson.fowler@cushwake.com

170 South Main Street
Salt Lake City, UT 84101
+1 801 322 2000
cushmanwakefield.com

FOR SUBLEASE
7041 COMMERCE PARK DRIVE
Midvale, Utah 84047



FLOOR PLAN



LOCATION AERIAL



TYSON FOWLER
Senior Associate
+1 801 303 5413
tyson.fowler@cushwake.com

170 South Main Street
Salt Lake City, UT 84101
+1 801 322 2000
cushmanwakefield.com