



FOR LEASE

Grandview Office Park

12200-12250 Weber Hill Rd. / Sunset Hills, MO

BUILDING SIGNAGE AVAILABLE

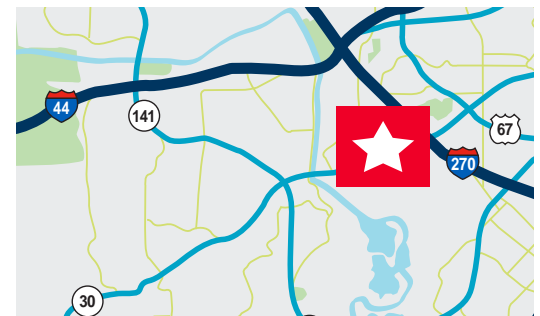


Premier South County Class A Office Properties Full Floor Opportunity: 16,428 RSF Available

Property Highlight

- Suites from 1,000 - 16,428 RSF
- Rare large block opportunity
- Ample parking: 4.8/1,000 RSF
- Covered executive parking available
- Immediate access to I-270
- High-visibility location with exterior highway-facing building signage available
- New Grab-and-Go café

Rate: \$24.00/SF



Jim Mosby, CCIM, SIOR

Vice Chair

+1 314 746 0316

jim.mosby@cushwake.com

Danielle Grubbs

Senior Director

+1 314 925 3175

danielle.grubbs@cushwake.com

7700 Forsyth Blvd., Suite 1210

St. Louis, Missouri

main +1 314 862 7100

cushmanwakefield.com



**CUSHMAN &
WAKEFIELD**

FOR LEASE

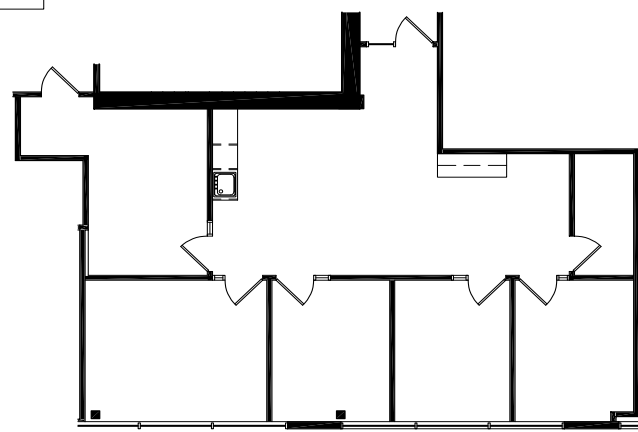
Grandview Office Park

12200-12250 Weber Hill Rd. / Sunset Hills, MO

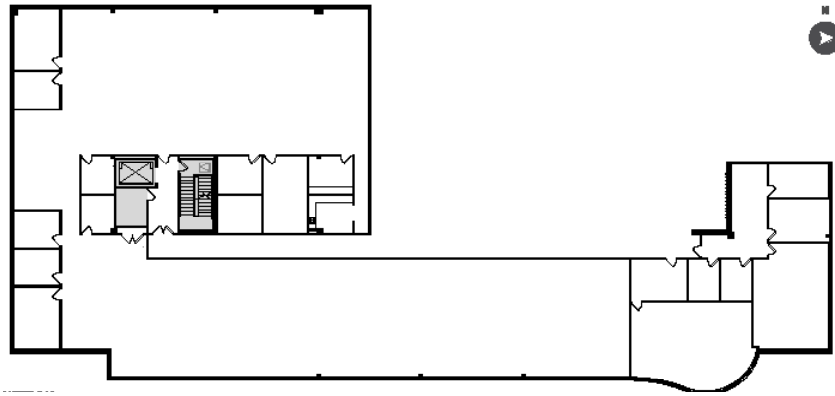
BUILDING I - 12220 WEBER HILL RD

1,402 - 16,428 RSF Available

Suite 105 - 1,402 RSF



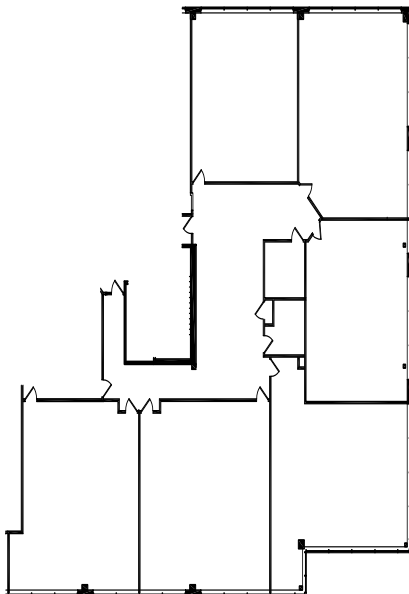
2nd Floor - 16,428 RSF



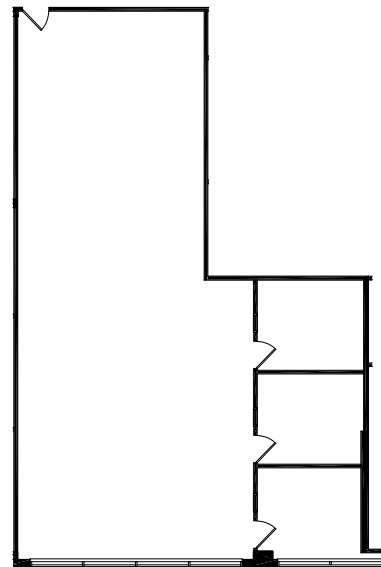
BUILDING II - 12250 WEBER HILL RD

7,963 - 2,326 RSF Available

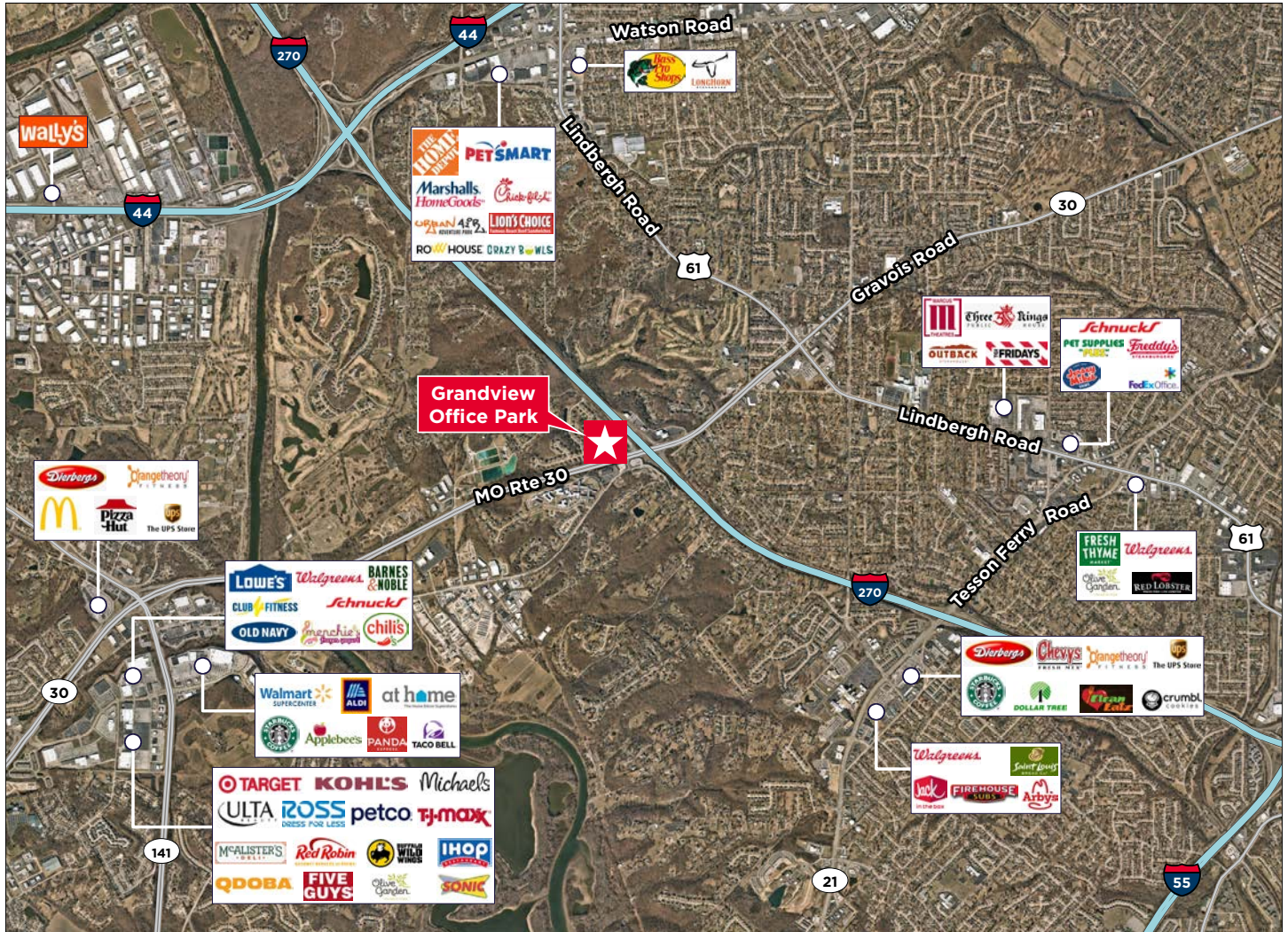
Suite 105 - 7,963 RSF



Suite 220 - 2,326 RSF



Aerial / Location Map



Jim Mosby, CCIM, SIOR
Vice Chair
+1 314 746 0316
jim.mosby@cushwake.com

Danielle Grubbs
Senior Director
+1 314 925 3175
danielle.grubbs@cushwake.com

7700 Forsyth Blvd., Suite 1210
St. Louis, Missouri
main +1 314 862 7100
cushmanwakefield.com