



Statler Parking Garage

Rare Downtown Opportunity

Parking Garage for Sale at 1111 Euclid Avenue, Cleveland, Ohio 44114

Statler Parking Garage

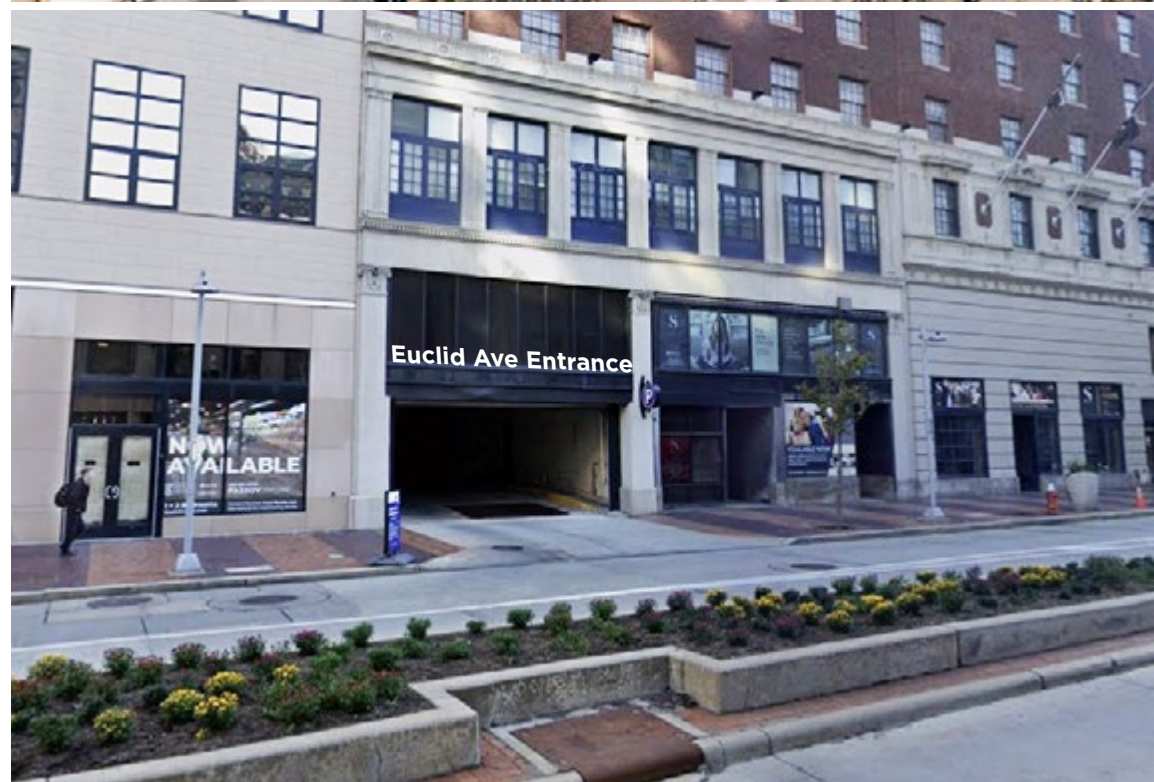
- Rare opportunity to own a parking garage in downtown Cleveland
- Ideal parking for Playhouse Square, Rocket Mortgage Field House and Progressive Field
- Playhouse Square sees over 1,000,000 annual visitors
- 300 spaces accessible through Euclid Ave and Hickory CT
- Additional 70 spaces available in lower levels

Available Space

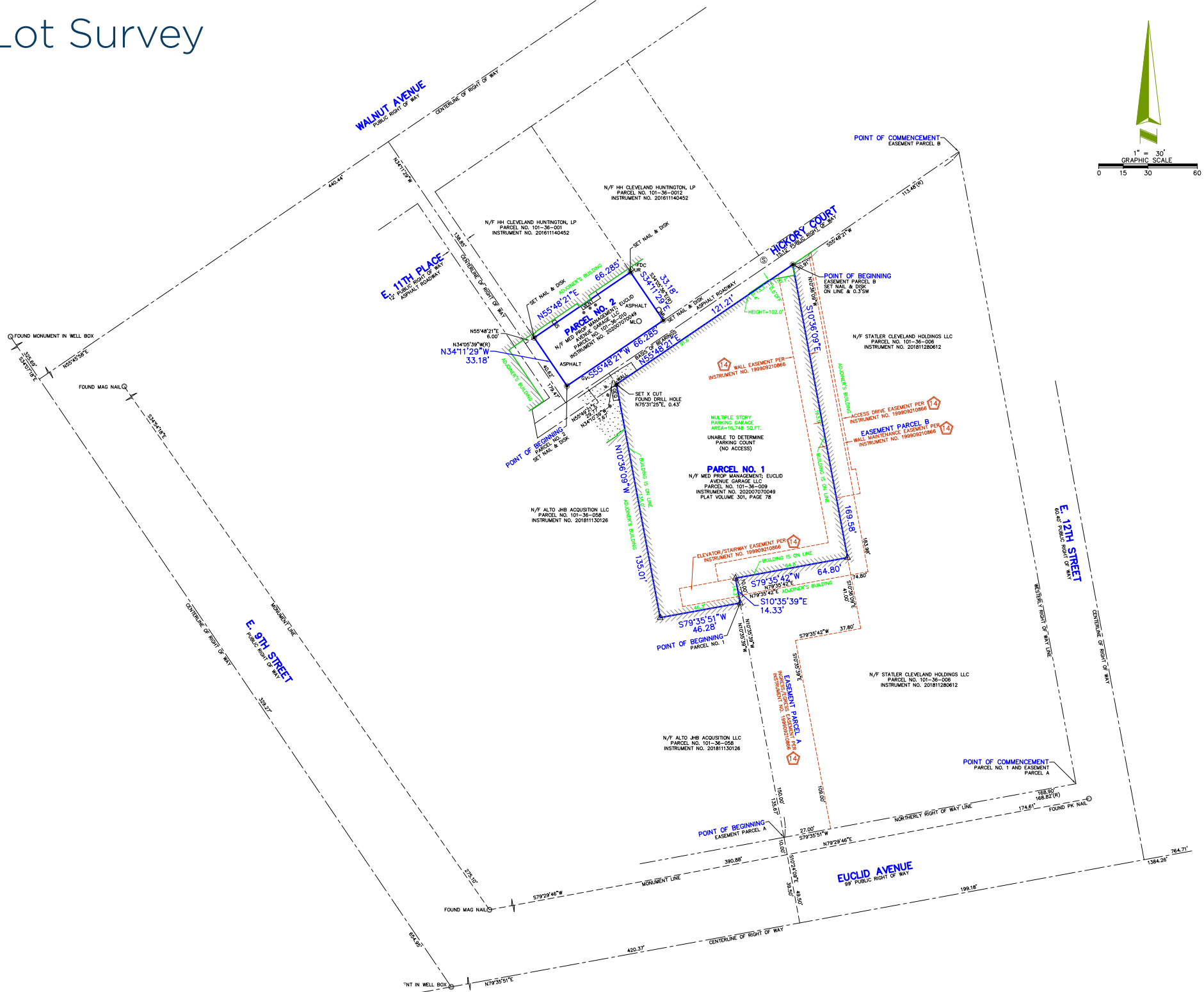
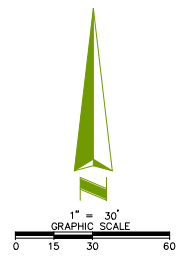
Up to 370 Space Parking Garage on 0.4 AC lot

Asking Price

Contact Broker



Lot Survey



Flats East Bank

Warehouse District

Future Home of Sherwin Williams Headquarters

Terminal Tower

East 4th

Playhouse Square

1111 Euclid Ave



Rare Downtown Opportunity

Parking Garage for Sale at 1111 Euclid Avenue, Cleveland, Ohio 44114

RICO PIETRO, SIOR

Principal

rpietro@crescorealestate.com

+1 216 525 1473

KIRSTEN PARATORE

Associate

kparatore@crescorealestate.com

+1 216 525 1491

ROBBY MARTINELLI

Associate

rmartinelli@crescorealestate.com

+1 216 232 4104

6100 Rockside Woods Blvd, Suite 200

Cleveland, Ohio 44131

Main +1 216 520 1200

crescorealestate.com

