

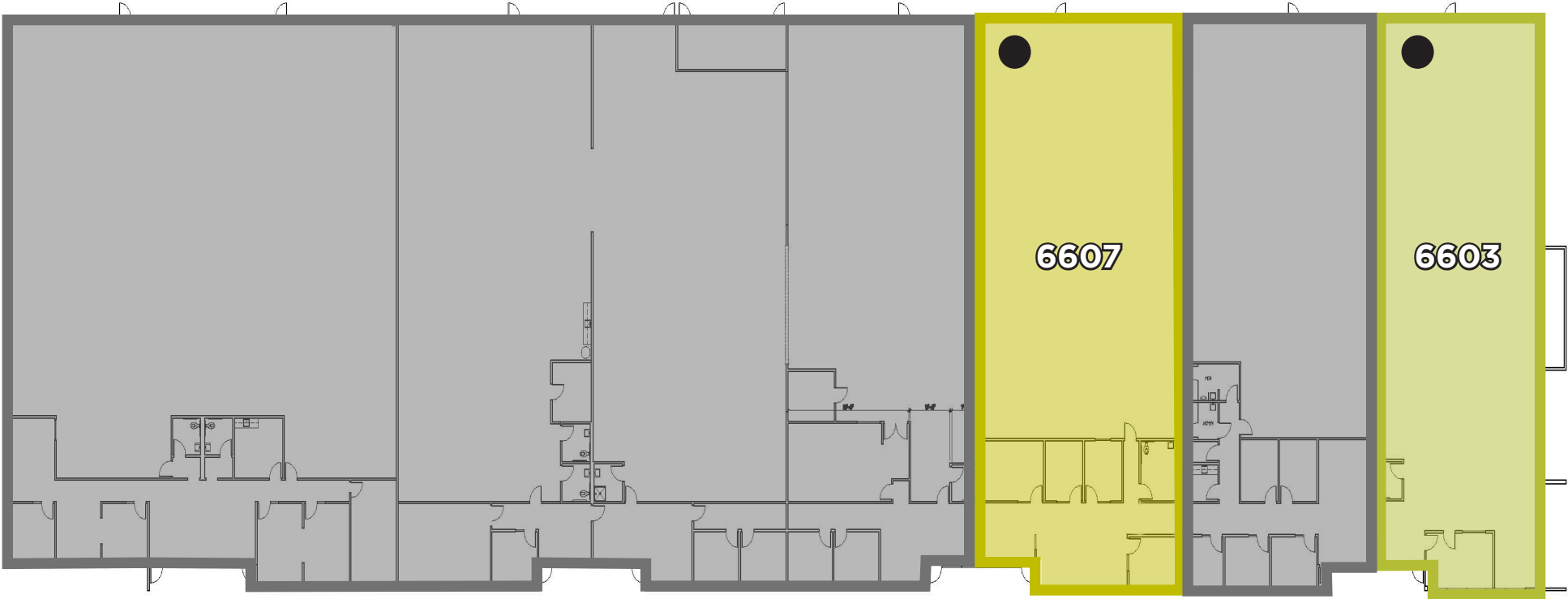
# COLISEUM FOR LEASE BUSINESS CENTER

**INTERIOR IMPROVEMENTS COMPLETE**

## PROPERTY FEATURES

- Fully Secured, Light Industrial Business Park
  - Functional Existing Office Configurations
  - Upgraded Security System in Place
  - Grade Level Loading
  - 16'-18' Clear Height
  - Quick Access to I-880 via 66th Avenue
  - Close Proximity to Coliseum BART Station
  - Excellent Parking and Trucking Staging
- Three (3) Spaces Available:
    - » 6603 San Leandro Street: ± 6,121 SF  
\$1.30/SF/Month I.G. + CAM
    - » 6607 San Leandro Street: ± 5,563 SF  
\$1.30/SF/Month I.G. + CAM
    - » 840 66th Avenue: ± 3,202 SF  
\$1.35/SF/Month I.G. + CAM

**6603 & 6607** San Leandro Street  
Oakland, CA

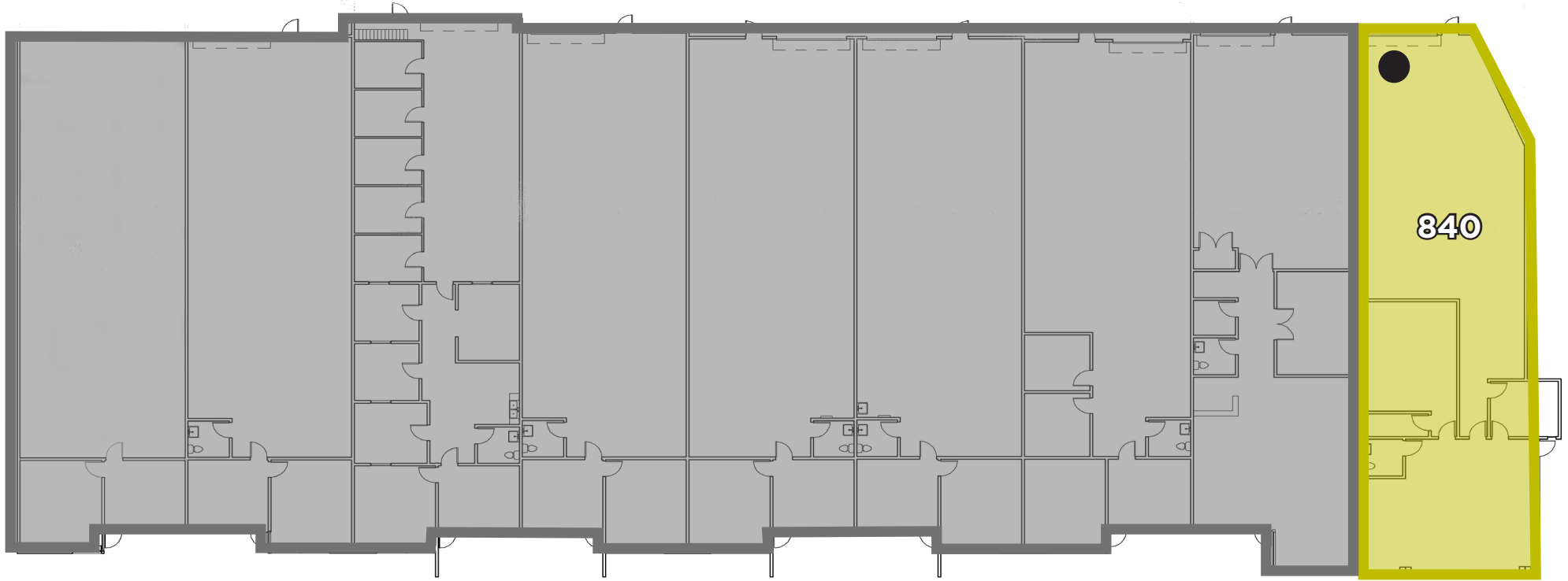


● GRADE LEVEL DOOR



# 840

66th Avenue  
Oakland, CA



● GRADE LEVEL DOOR

### FOR MORE INFO CONTACT:

#### Andrew Schmieder

Senior Director  
+1 510 891 5834  
andrew.schmieder@cushwake.com  
LIC #01828740

#### Ted J. Anderson

Managing Director  
+1 510 465 8000  
ted.anderson@cushwake.com  
LIC #01332000

