



New Building and Site Improvements

Property shows well!

Come tour with your small clients, or call and we will
arrange access for a tour

FOR LEASE

CIVIC EXECUTIVE PARK 1465 Civic Court Concord, CA

Suite 1030, 887 RSF

Suite 1040, 1,088 RSF

Suite 1060, 1,703 RSF



CIVIC EXECUTIVE PARK

1465 Civic Court
Concord, CA

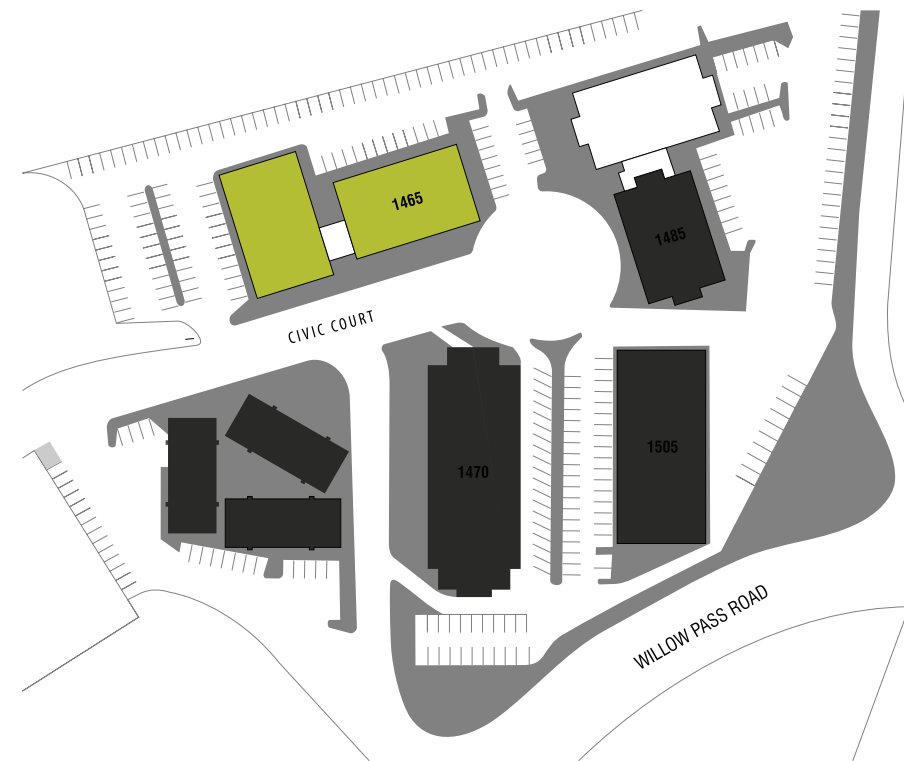
Project Highlights

Property Information

1465 Civic Court – two-story office building totaling ±31,054 RRSF

Access & Amenities

- Central Concord location, Easy Access to/from I-680 and H-242 Freeways
- New Building and Common area renovations recently completed including new roof, new HVAC systems, fire-sprinklers installed, restrooms remodeled, lobbies renovated.
- Building served by elevator and two stairwells
- Suite improvements include new ceiling grid and tiles, LED lighting paint and carpet
- Numerous amenities, restaurants and services within walking distance, or short drive
- On-Site Ownership and Management
- 4 spaces per 1,000 RSF surface parking on-site
- Public Transportation access
- Deli-Café in adjacent Metroplex Office building



John Fennell

Managing Director
(925) 274-2802

john.fennell@cushwake.com

LIC #00902673

CIVIC EXECUTIVE PARK

1465 Civic Court
Concord, CA

Project Improvements



CIVIC EXECUTIVE PARK

1465 Civic Court
Concord, CA

Location Aerial



John Fennell
Managing Director
(925) 274-2802
john.fennell@cushwake.com
LIC #00902673

CIVIC EXECUTIVE PARK

1465 Civic Court
Concord, CA

Amenities Aerial



SUN VALLEY SHOPPING CENTER

EATERIES

- Anderson Bakery/Cafe
- BJ's Restaurant
- Dojo Ramen Bar
- Johnny Rockets
- McDonalds
- Red Robin
- Starbucks
- Subway
- Surf City Squeeze

SERVICES & SHOPPING

- Macy's
- Nordstrom Rack
- 24 Hour Fitness
- Bank of America
- AT&T
- Disney Store
- Sears
- JCPenney
- Sprint

WILLOWS SHOPPING CENTER

EATERIES

- Benihana
- Claim Jumper
- Fuddrucker's
- Ike's Place
- Jamba Juice
- Krispy Kreme
- Lazy Dog Restaurant
- Panera Bread
- The Jungle

SERVICES & SHOPPING

- Any Mountain
- Cost Plus World Market
- Daiso Japan
- Old Navy
- REI
- UFC Gym
- US Bank
- Bank of the West

THE VERANDA

EATERIES

- Mikuni Japanese
- Peet's Coffee
- Super Duper Burger
- Whole Foods 365

SERVICES & SHOPPING

- AAA
- City Sport Health Club
- Cost Plus World Market
- IMAX
- T.J. Maxx
- Travis Credit Union
- Xfinity

CIVIC EXECUTIVE PARK

1465 Civic Court
Concord, CA

Site Plan

AVAILABLE



John Fennell
Managing Director
(925) 274-2802
john.fennell@cushwake.com
LIC #00902673

CIVIC EXECUTIVE PARK

1465 Civic Court
Concord, CA

Suite 1030 | ±887 RSF



AVAILABLE



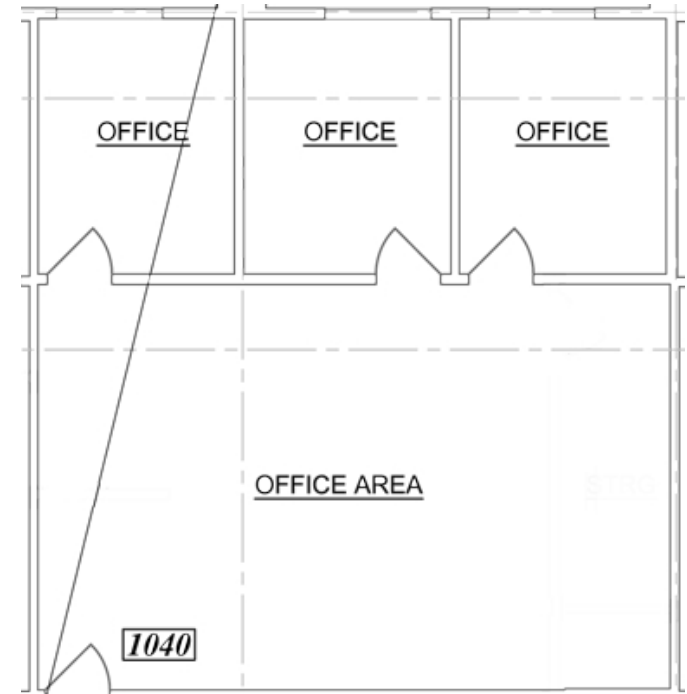
John Fennell
Managing Director
(925) 274-2802
john.fennell@cushwake.com
LIC #00902673

CIVIC EXECUTIVE PARK

1465 Civic Court
Concord, CA

1465 Second Floor Plan

Suite 1040 | ±1,088 RSF



AVAILABLE



John Fennell
Managing Director
(925) 274-2802
john.fennell@cushwake.com
LIC #00902673

CIVIC EXECUTIVE PARK

1465 Civic Court
Concord, CA

1465 Second Floor Plan

Suite 1040 | ±1,088 RSF

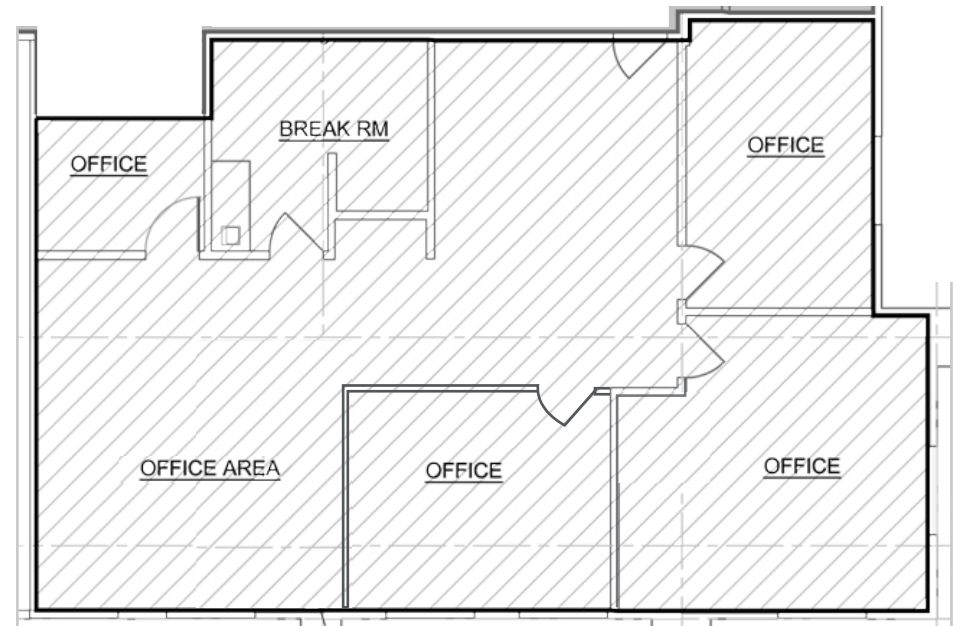


CIVIC EXECUTIVE PARK

1465 Civic Court
Concord, CA

1465 Second Floor Plan

Suite 1060 | ±1,703 RSF



AVAILABLE



John Fennell
Managing Director
(925) 274-2802
john.fennell@cushwake.com
LIC #00902673

CIVIC EXECUTIVE PARK

1465 Civic Court
Concord, CA

Photo Gallery

Suite 1060 | ±1,703 RSF





CIVIC EXECUTIVE PARK

1465 Civic Court
Concord, CA

John Fennell

Managing Director

(925) 274-2802

john.fennell@cushwake.com

LIC #00902673