

GLENMORE BUSINESS PARK



550 - 71 AVENUE SE, 7710 - 5 STREET SE, 610 - 70 AVENUE SE
CALGARY, AB



ABOUT THE PROPERTY

Welcome to **Glenmore Business Park**, a modern business hub strategically located off the intersection of Blackfoot Trail and Glenmore Trail. Surrounding amenities include Chinook Mall, Deerfoot Meadows, Calgary Farmers' Market South, and so much more. The site is equipped with top-notch infrastructure including high-speed fibre internet and ample parking, as well as easy access to transit stops. Flexible leasing options are available to accommodate businesses of all sizes and industries, from short-term leases to long-term commitments.

HIGHLIGHTS

- Exterior upgrades to all buildings
- 52,000 vehicles per day along Blackfoot Trail
- 12 minutes to Downtown Calgary and 20 minutes to the Calgary International Airport
- I-G zoning allowing for a wide variety of uses
- Surface and underground parking available (except for 610 70 Avenue SE, only surface available)
- Surrounded by excellent amenities
- Warehouse opportunities available in the park ranging from 2,700 sf to 24,497 sf
- 24/7 HVAC
- Furniture available

PROPERTY FEATURES

550 - 71 Avenue SE



Space Available:	Suite 150: 11,046 sf Suite 220: 5,081 sf Suite 230: 7,060 sf Suite 250: 5,044 sf C/L
Availability:	Immediately
Parking:	1 per 436 sf Underground: \$75/stall/month
Rates:	Market
Op Costs:	\$15.50 psf (2025)
Zoning	I-G (Rezoning underway to accommodate medical uses)

7710 - 5 Street SE



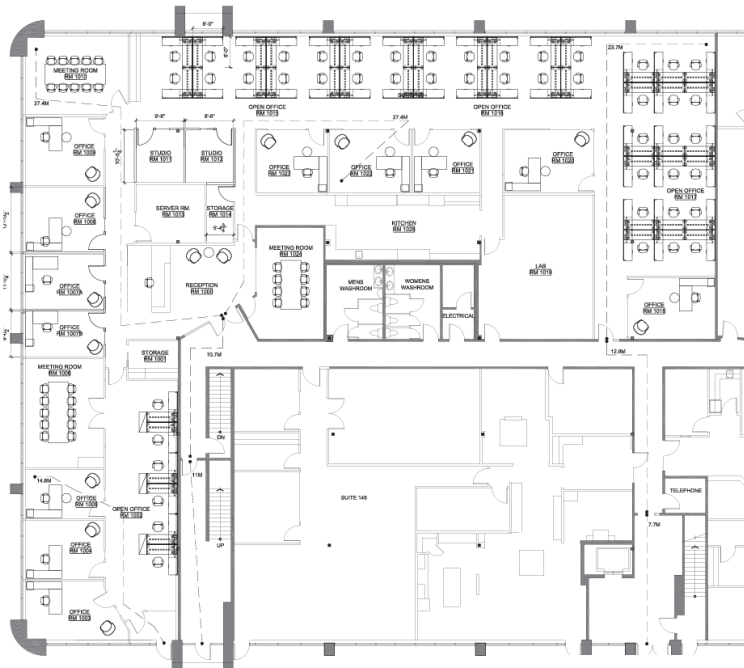
Space Available:	Suite 104: 679 sf Suite 200A: 2,392 sf LEASED Suite 208: 1,286 sf
Availability:	Immediately, except Suite 104: Mar 1, 2025
Parking:	1 per 377 sf Underground: \$75/stall/month
Rates:	Market
Op Costs:	\$15.06 psf (2025)
Zoning:	I-G

610 - 70 Avenue SE



Space Available:	Suite 206-210: 7,802 sf
Availability:	Immediately
Parking:	1 per 350 sf
Rates:	Market
Op Costs:	\$11.25 psf (2025) *Includes utilities
Zoning	I-G

FLOOR PLANS



SUITE 150: 11,046 SF
DEMISABLE TO 2,500 SF



SECOND FLOOR

360° SUITE 220: 5,081 SF
360° SUITE 230: 7,060 SF
360° SUITE 250: 5,044 SF C/L

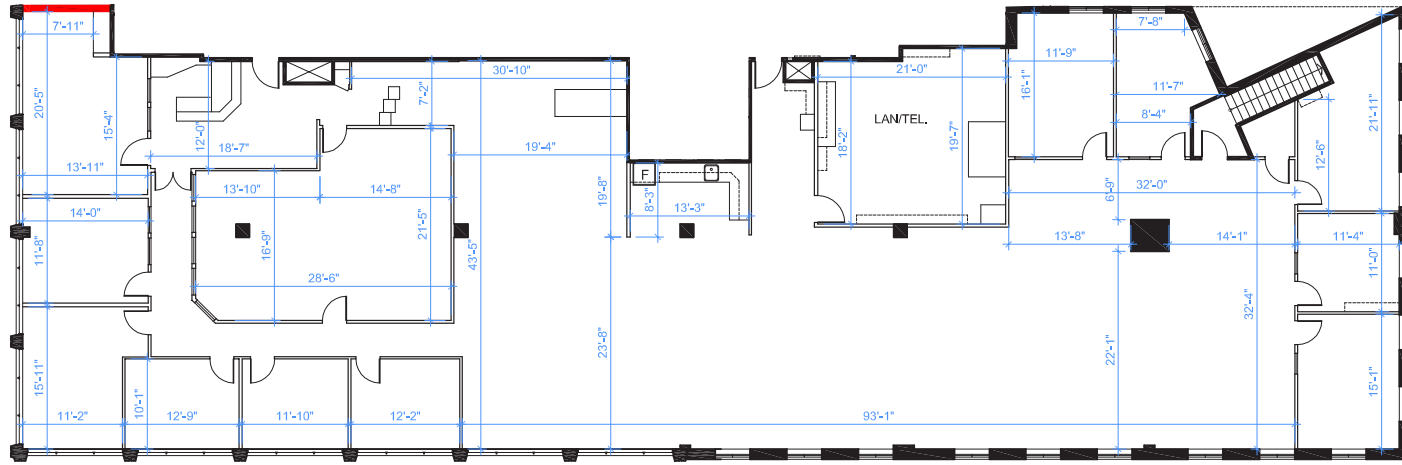
CONTIGUOUS TO 12,141 SF AND DEMISABLE FROM 1,500 SF

550-71 AVENUE SE

- Recently painted building exterior and common area upgrades
- Suite 150 comes fully furnished, Suites 220, 230, and 250 are partially furnished
- Heated underground parking available
- Building offers handicap accessible ramp and convenient bike storage
- Short term leasing available



FLOOR PLANS



360° SUITE 206-210: 7,802 SF
*** DEMISABLE**

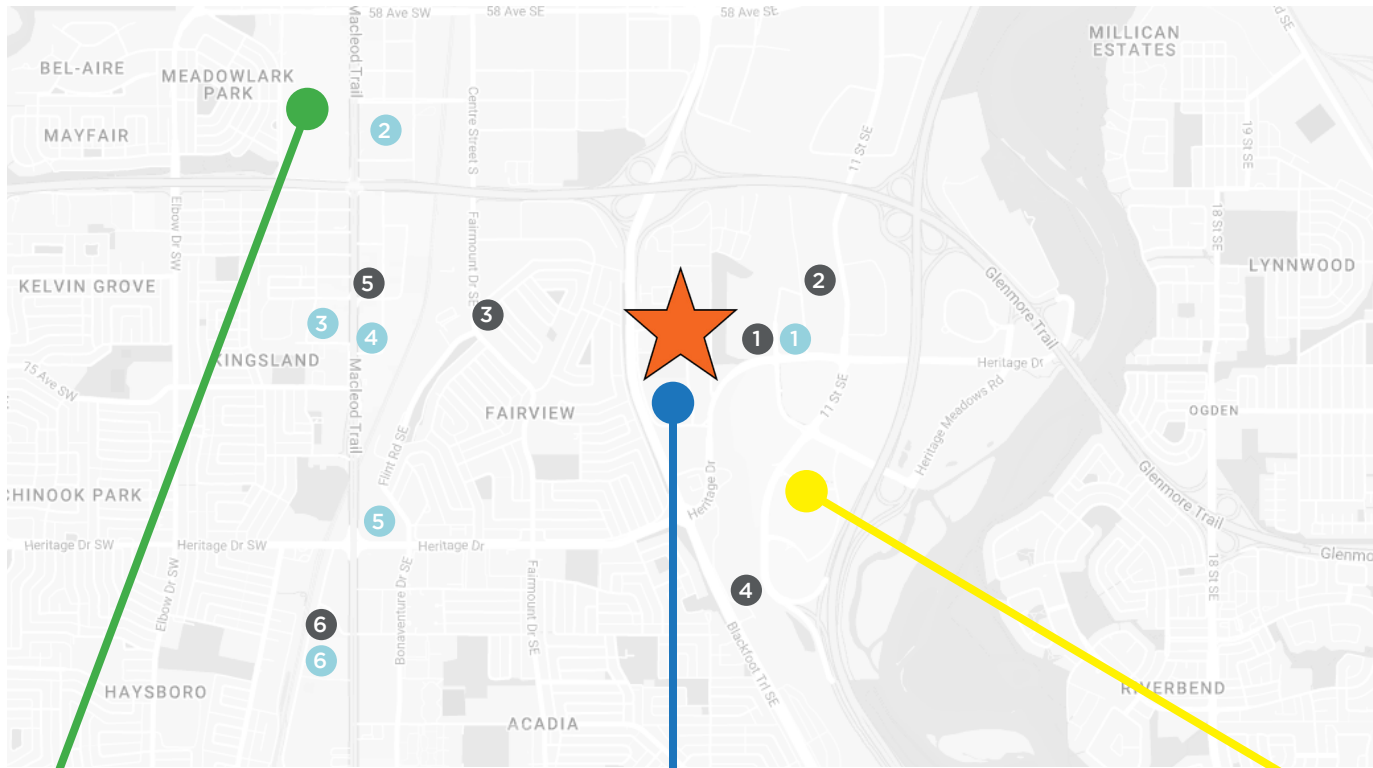
610-70 AVENUE SE

- Recent exterior and common area renovations
- Surface parking available, free of charge
- New carpet, paint, and lights
- Short term leasing available



AMENITY MAP

- 1 Tim Hortons, Boston Pizza, Noodle Box
- 2 Benny's Breakfast Bar, European Market Deli
- 3 Pita Queen, Beirut Street Food
- 4 Starbucks, Les Moulins La Fayette
- 5 Cactus Club, The Keg Steakhouse, Fat Burger
- 6 Tim Hortons, Big Catch Sushi Bar, Padmanadi



- 1 Costco, Costco Gas, Dollarama, Ashley HomeStore
- 2 The Home Depot, BMO, Staples, PetSmart
- 3 Marshalls, Supplement World, Sally Beauty
- 4 A Mart, Dollarama, Kalyna European Food and Deli
- 5 Winners, HomeSense, Dollar Tree
- 6 Calgary Co-op, Scotiabank, connectFirst

CF Chinook Centre

Calgary Farmer's Market

Deerfoot Meadows





**For more information
please contact:**

DAVID LEES
Executive Vice President
Office Sales & Leasing
403 261 1102
david.lees@cushwake.com

ADAM RAMSAY
Executive Vice President
Office Sales & Leasing
403 261 1103
adam.ramsay@cushwake.com

TRENT PETERSON
Vice President
Office Sales & Leasing
403 261 1101
trent.peterson@cushwake.com

CUSHMAN & WAKEFIELD ULC
250 6 Avenue SW, Suite 2400
Calgary, AB T2P 3H7 | Canada
cushmanwakefield.com

©2024 Cushman & Wakefield. All rights reserved. The information contained in this communication is strictly confidential. This information has been obtained from sources believed to be reliable but has not been verified. NO WARRANTY OR REPRESENTATION, EXPRESS OR IMPLIED, IS MADE AS TO THE CONDITION OF THE PROPERTY (OR PROPERTIES) REFERENCED HEREIN OR AS TO THE ACCURACY OR COMPLETENESS OF THE INFORMATION CONTAINED HEREIN, AND SAME IS SUBMITTED SUBJECT TO ERRORS, OMISSIONS, CHANGE OF PRICE, RENTAL OR OTHER CONDITIONS, WITHDRAWAL WITHOUT NOTICE, AND TO ANY SPECIAL LISTING CONDITIONS IMPOSED BY THE PROPERTY OWNER(S). ANY PROJECTIONS, OPINIONS OR ESTIMATES ARE SUBJECT TO UNCERTAINTY AND DO NOT SIGNIFY CURRENT OR FUTURE PROPERTY PERFORMANCE.