

**FOR LEASE**

# 1930 S. Rochester Avenue

ONTARIO, CALIFORNIA

**UNIT 112 : ±7,528 SF Industrial Space**



**LEASING INFO  
& CONTACT**

**Chris Pimentel**  
909 942 4600  
chris.pimentel@cushwake.com  
CA License #02207362

**Tim Pimentel, SIOR**  
909 942 4647  
tim.pimentel@cushwake.com  
CA License #01421452

**Brice Larson**  
909 942 4642  
brice.larson@cushwake.com  
CA License #02056356



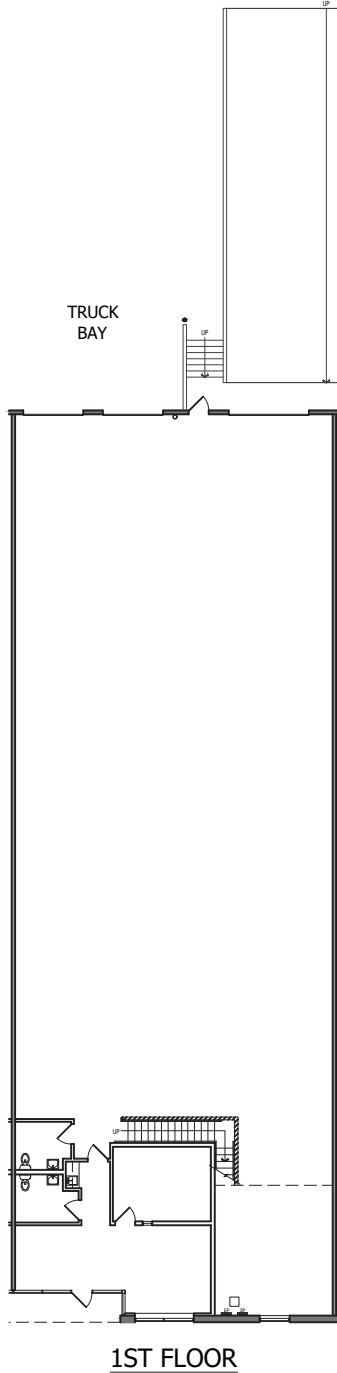
901 Via Piemonte, Suite 200  
Ontario, California 91764  
www.cushwake.com

This is not an offer or acceptance of an offer to lease space. A lease will only be offered or made in a written agreement signed by landlord. No representation or warranty of any is made by landlord unless set forth in a written definitive lease executed by the landlord.

# SITE PLAN

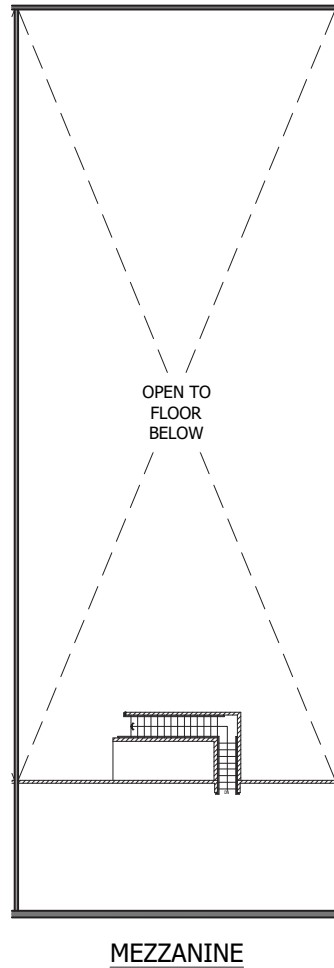
**AVAILABLE**

**1930 S. ROCHESTER AVE | UNIT 112**  
**±7,528 SF**



# PROPERTY FEATURES

- » 24' Minimum Clear Height
- » ±6,548 SF Ground Floor / ±890 SF Mezzanine
- » ±762 SF Office Area
- » Restrooms
- » Fully Sprinklered
- » 2 Dock High / 1 Ground Level Doors
- » 200 amp, 120/208v Electrical
- » I-15 Freeway Frontage



## LEASING INFO & CONTACT

**Chris Pimentel**  
 909 942 4600  
 chris.pimentel@cushwake.com  
 CA License #02207362

**Tim Pimentel, SIOR**  
 909 942 4647  
 tim.pimentel@cushwake.com  
 CA License #01421452

**Brice Larson**  
 909 942 4642  
 brice.larson@cushwake.com  
 CA License #02056356



901 Via Piemonte, Suite 200  
 Ontario, California 91764  
 www.cushwake.com

This is not an offer or acceptance of an offer to lease space. A lease will only be offered or made in a written agreement signed by landlord. No representation or warranty of any is made by landlord unless set forth in a written definitive lease executed by the landlord.



## KEY DISTANCES

I-15	±1.4 Miles
SR-60	±1.4 Miles
Ontario International Airport	±2.0 Miles
I-10	±2.2 Miles
Downtown LA	±32.0 Miles
I-5	±34.0 Miles

