

MERIDIAN PARK SOUTH

16300 COYOTE BUSH ROAD, RIVERSIDE, CA 92518



MERIDIAN
WHERE COMMERCE MEETS THE WORLD

BUILDING 1: ±144,030 SQUARE FEET



PROJECT FEATURES

- ◆ Part of the Master Planned Meridian Business Park
- ◆ 32' Clear Height
- ◆ 3,742 SF High End Office Space
- ◆ 28 Dock High Loading Doors (4 Doors w/ Dock Packages)
- ◆ 2 Grade Level Ramps (12'x15')
- ◆ 135' - 247' Secured Yard w/ 12' Concrete Screen Wall
- ◆ 51 Trailer Stalls
- ◆ 134 Car Parking Spaces
- ◆ ESFR Sprinkler System
- ◆ 2,000 amp UGPS - 2,000 amp 480/277v Main Service
- ◆ 25 FC LED Lighting
- ◆ 2% Skylights
- ◆ 6" Thick, 4,000 PSI Floor Slab
- ◆ Excellent I-215 and SR-60 Freeway Access

Phil Lombardo
909 942 4678
phil.lombardo@cushwake.com
CA License 00892477

Chuck Belden, SIOR
909 942 4640
chuck.belden@cushwake.com
CA License 00844840

Andrew Starnes
909 942 4667
andrew.starnes@cushwake.com
CA License 01799801

Joseph L. McKay
909 373 2914
jmckay@lee-assoc.com
CA License 00894360

Michael Fine
909 373 2917
mfine@lee-assoc.com
CA License 01735854



MERIDIAN PARK SOUTH

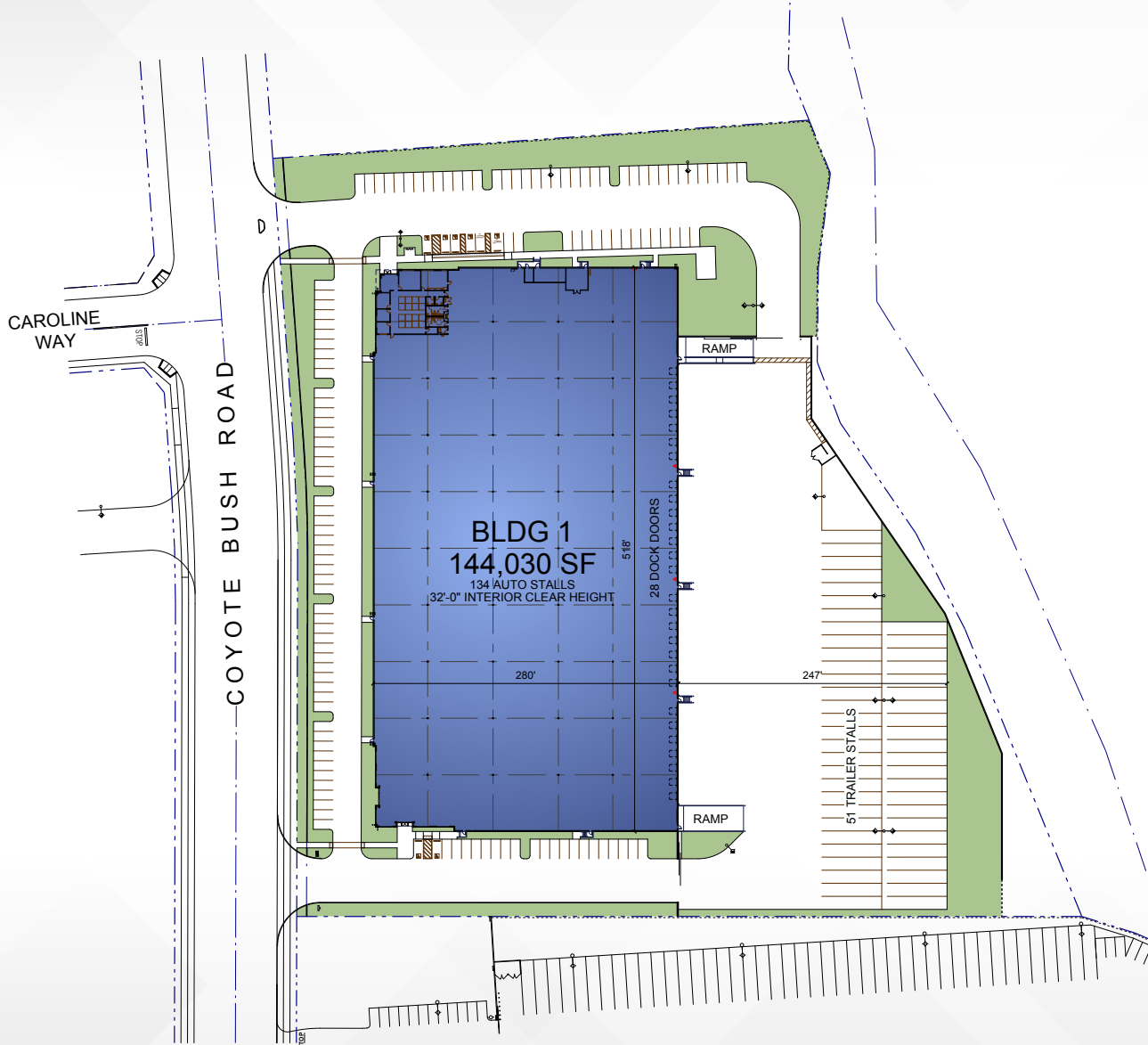
16300 COYOTE BUSH ROAD, RIVERSIDE, CA 92518



MERIDIAN

WHERE COMMERCE MEETS THE WORLD

BUILDING 1: ±144,030 SQUARE FEET



A QUALITY PROJECT BY:



CROW HOLDINGS
CAPITAL

Phil Lombardo
909 942 4678
phil.lombardo@cushwake.com
CA License 00892477

Chuck Belden, SIOR
909 942 4640
chuck.belden@cushwake.com
CA License 00844840

Andrew Starnes
909 942 4667
andrew.starnes@cushwake.com
CA License 01799801

Joseph L. McKay
909 373 2914
jmckay@lee-assoc.com
CA License 00894360

Michael Fine
909 373 2917
mfine@lee-assoc.com
CA License 01735854



COMMERCIAL REAL ESTATE SERVICES

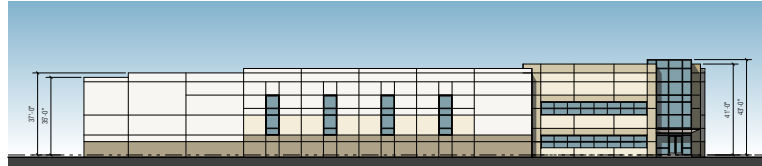
MERIDIAN PARK SOUTH

16300 COYOTE BUSH ROAD, RIVERSIDE, CA 92518

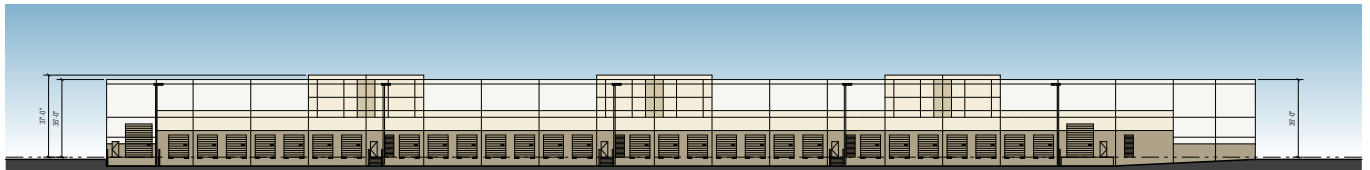


MERIDIAN
WHERE COMMERCE MEETS THE WORLD

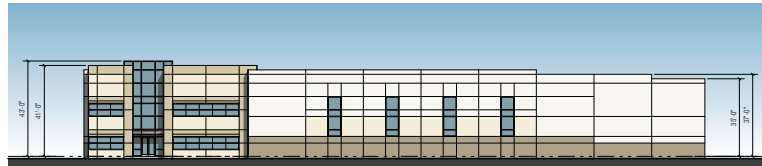
BUILDING 1: \pm 144,030 SQUARE FEET



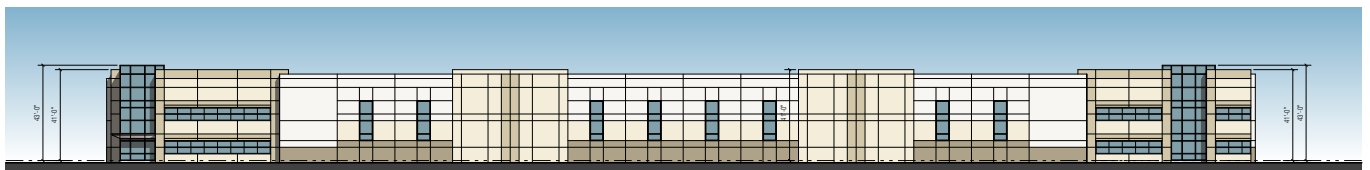
NORTH ELEVATION - MAIN OFFICE ENTRY



WEST ELEVATION



SOUTH ELEVATION - SECONDARY OFFICE ENTRY



EAST ELEVATION - COYOTE BUSH RD.

A QUALITY PROJECT BY:



CROW HOLDINGS
CAPITAL

Phil Lombardo
909 942 4678
phil.lombardo@cushwake.com
CA License 00892477

Chuck Belden, SIOR
909 942 4640
chuck.belden@cushwake.com
CA License 00844840

Andrew Starnes
909 942 4667
andrew.starnes@cushwake.com
CA License 01799801

Joseph L. McKay
909 373 2914
jmckay@lee-assoc.com
CA License 00894360

Michael Fine
909 373 2917
mfine@lee-assoc.com
CA License 01735854

