

9050 HERMOSA AVENUE

RANCHO CUCAMONGA, CA

INDUSTRIAL BUILDING FOR LEASE

468,682 SF



AVAILABLE Q2 2024

FOR MORE INFORMATION, PLEASE CONTACT:

CHUCK BELDEN, SIOR
909 942 4640
chuck.belden@cushwake.com
Lic. #00844840

PHIL LOMBARDO
909 942 4678
phil.lombardo@cushwake.com
Lic. #00892477

ANDREW STARNES
909 942 4667
andrew.starnes@cushwake.com
Lic. #01799801

TIM PIMENTEL, SIOR
909 942 4647
tim.pimentel@cushwake.com
Lic. #01421452



PROPERTY HIGHLIGHTS

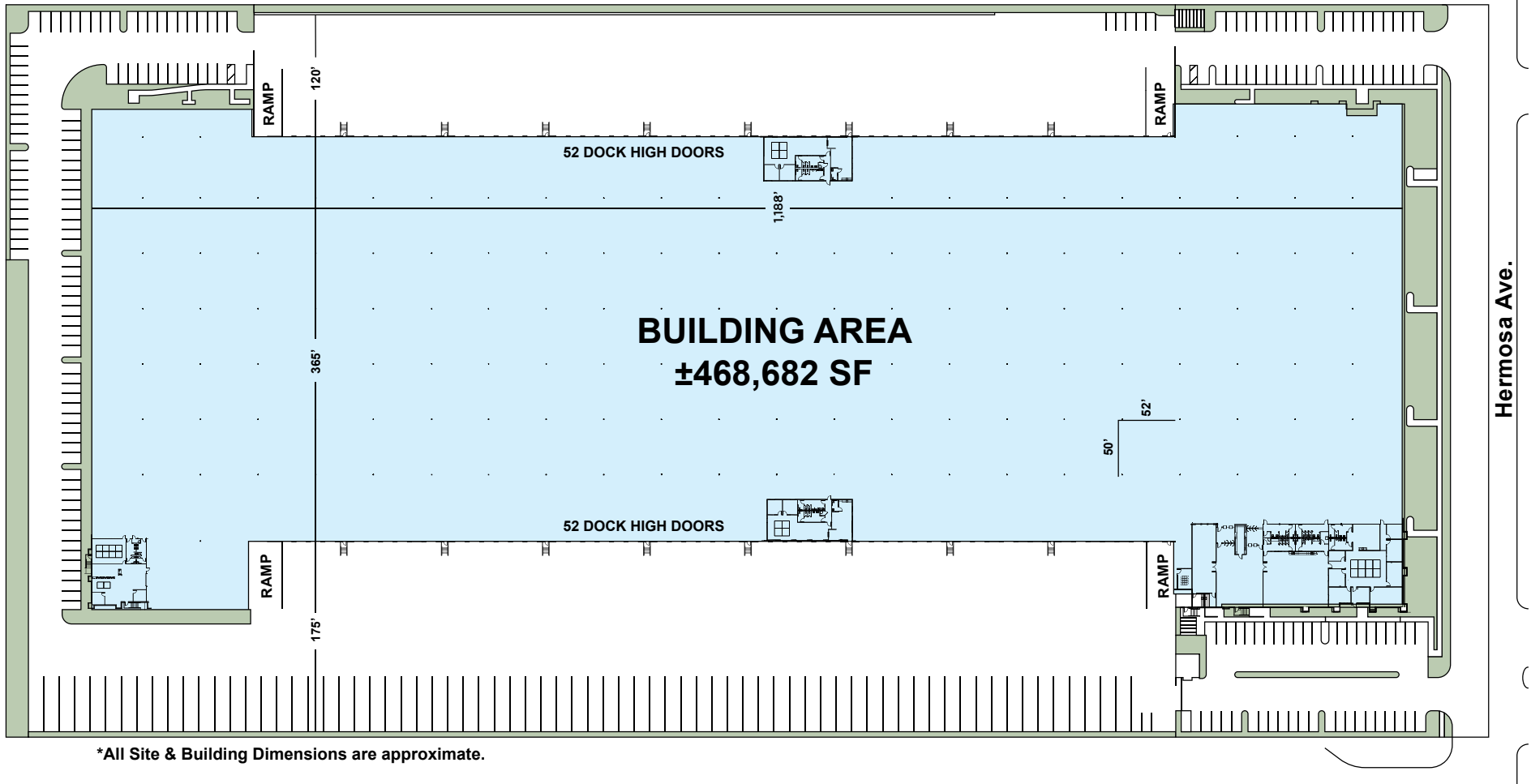
Building	468,682 SF
Site	19.4 acres
Loading	Cross Dock
Dock Doors	104 Dock High (9' x 10')
Grade Level	4 Ramps (10' x 12')
Electrical	1600 amps
Truck Court	Fully Secured (175' and 120')
Auto Parking	194
Trailer Parking	71
Fire Protection	ESFR
Clear Height	30' minimum
Skylights	3%
Insulation	White scrim foil
Offices	18,017 SF (10, 364 SF Main Office / 2,230 SF Shipping Office / 2,230 SF Receiving Office / 3,247 SF VAR Office)
Location	Excellent Access to I-10 and I-15 Freeways
Amenities	Close Proximity to Ontario International Airport and UPS / FedEx Hubs



9050 HERMOSA AVE, RANCHO CUCAMONGA, CA

SITE PLAN

A Quality Project by:



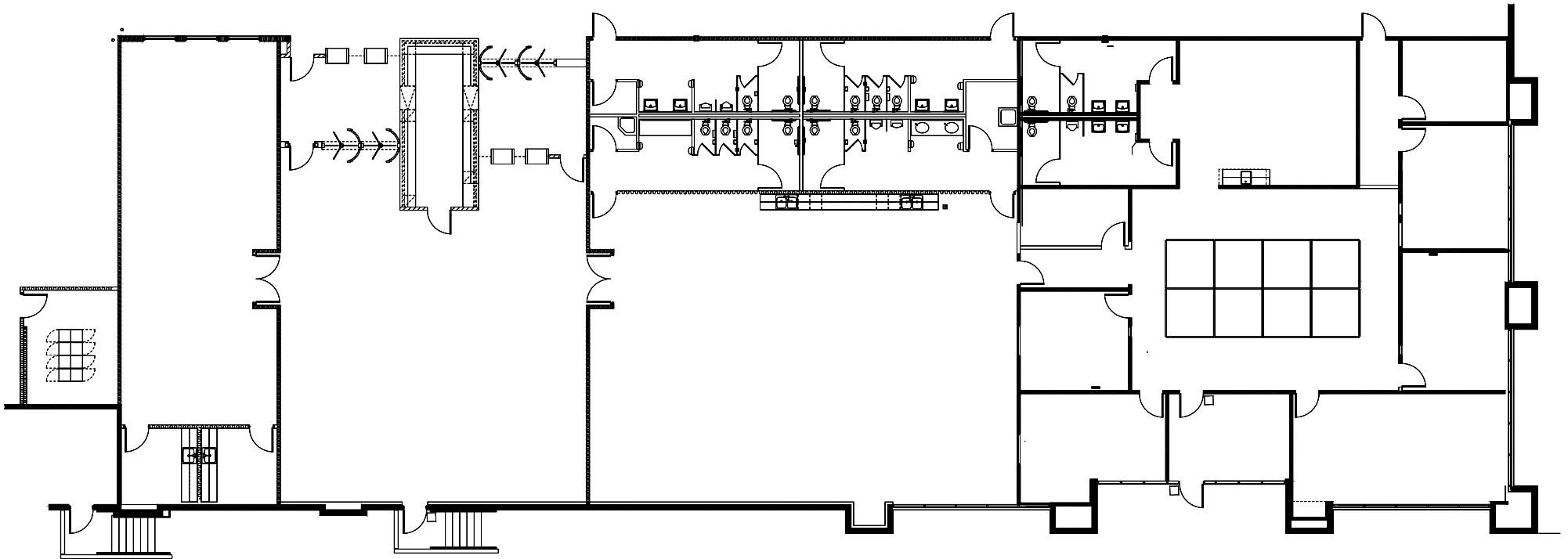
*All Site & Building Dimensions are approximate.

OFFICE AREA

A Quality Project by:

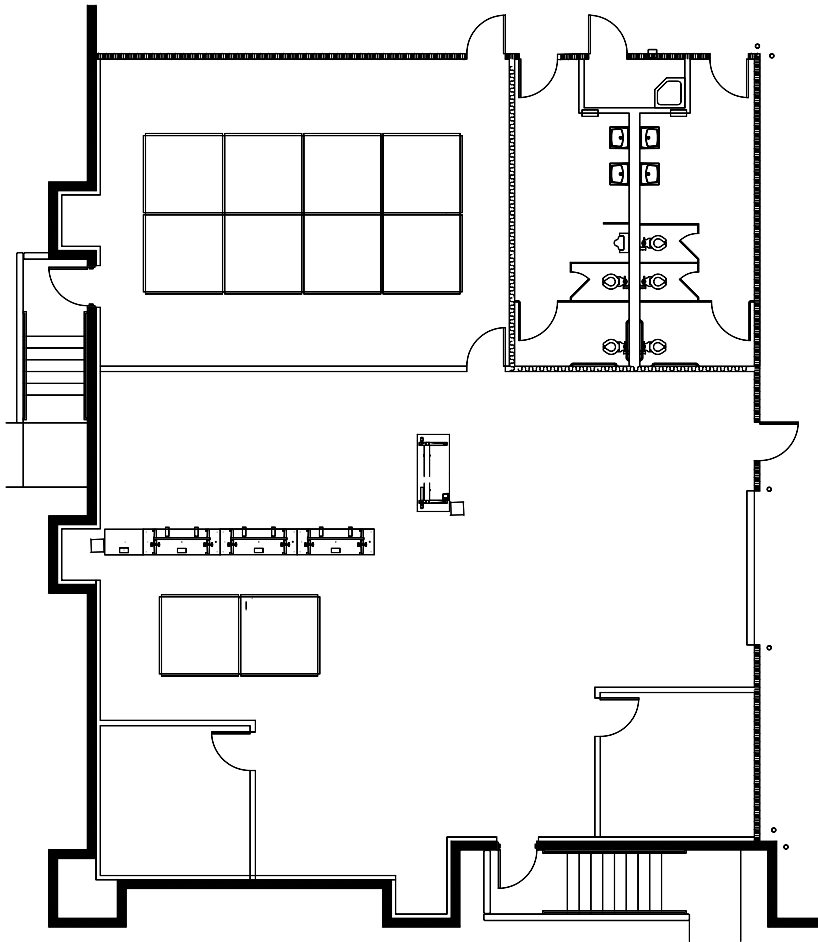


MAIN OFFICE: 10,364 SF

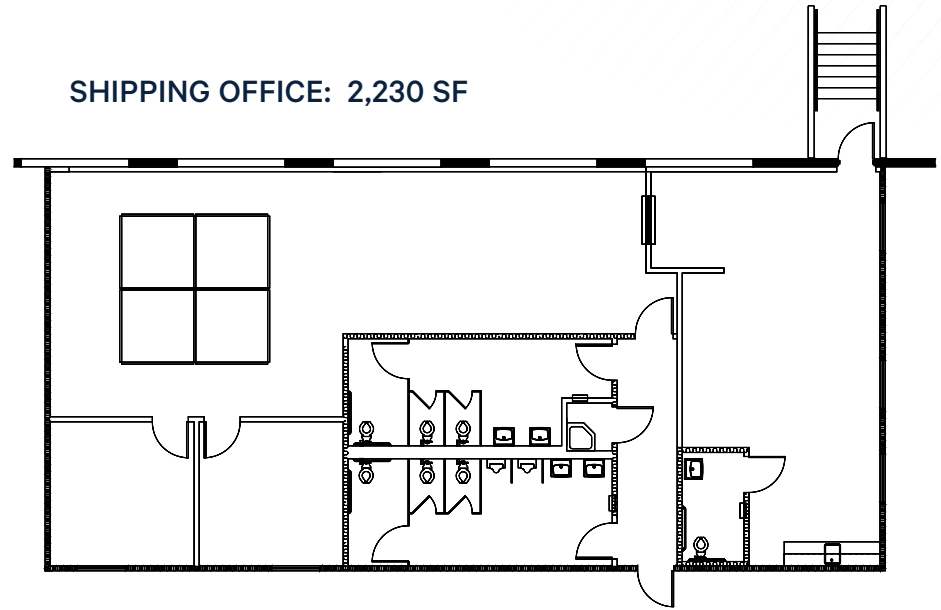


OFFICE AREA

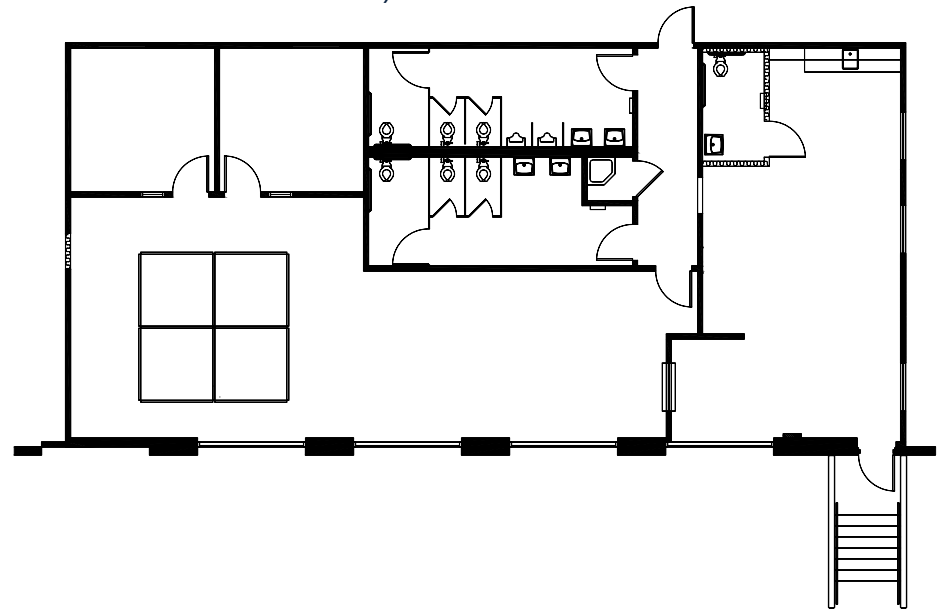
VAR OFFICE: 3,247 SF



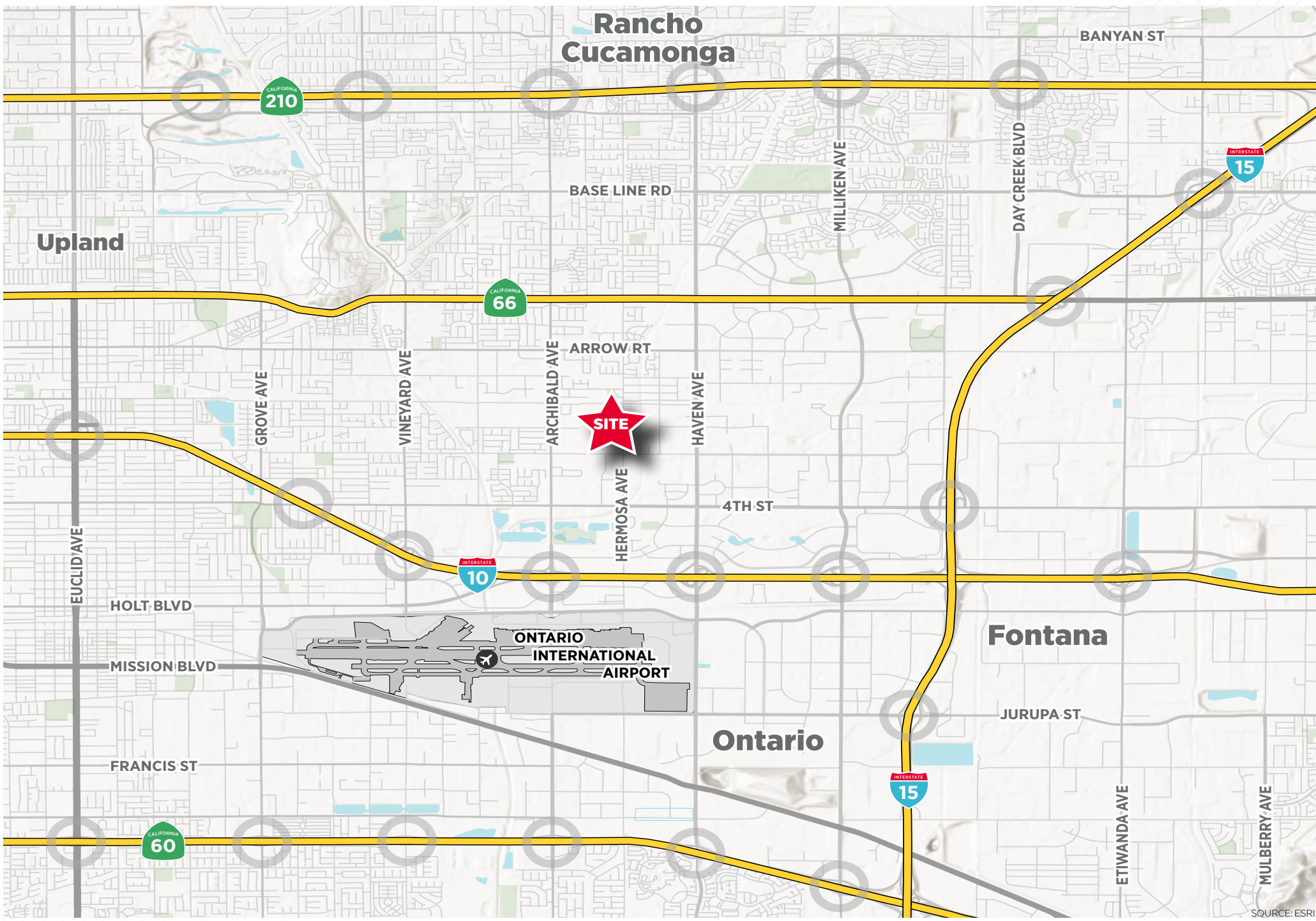
SHIPPING OFFICE: 2,230 SF



RECEIVING OFFICE: 2,230 SF



9050 HERMOSA AVE, RANCHO CUCAMONGA, CA



SOURCE: ESRI

A Quality Project by:



FOR MORE INFORMATION, PLEASE CONTACT:

CHUCK BELDEN, SIOR
909 942 4640
chuck.belden@cushwake.com
Lic. #00844840

PHIL LOMBARDO
909 942 4678
phil.lombardo@cushwake.com
Lic. #00892477

ANDREW STARNES
909 942 4667
andrew.starnes@cushwake.com
Lic. #01799801

TIM PIMENTEL, SIOR
909 942 4647
tim.pimentel@cushwake.com
Lic. #01421452

