

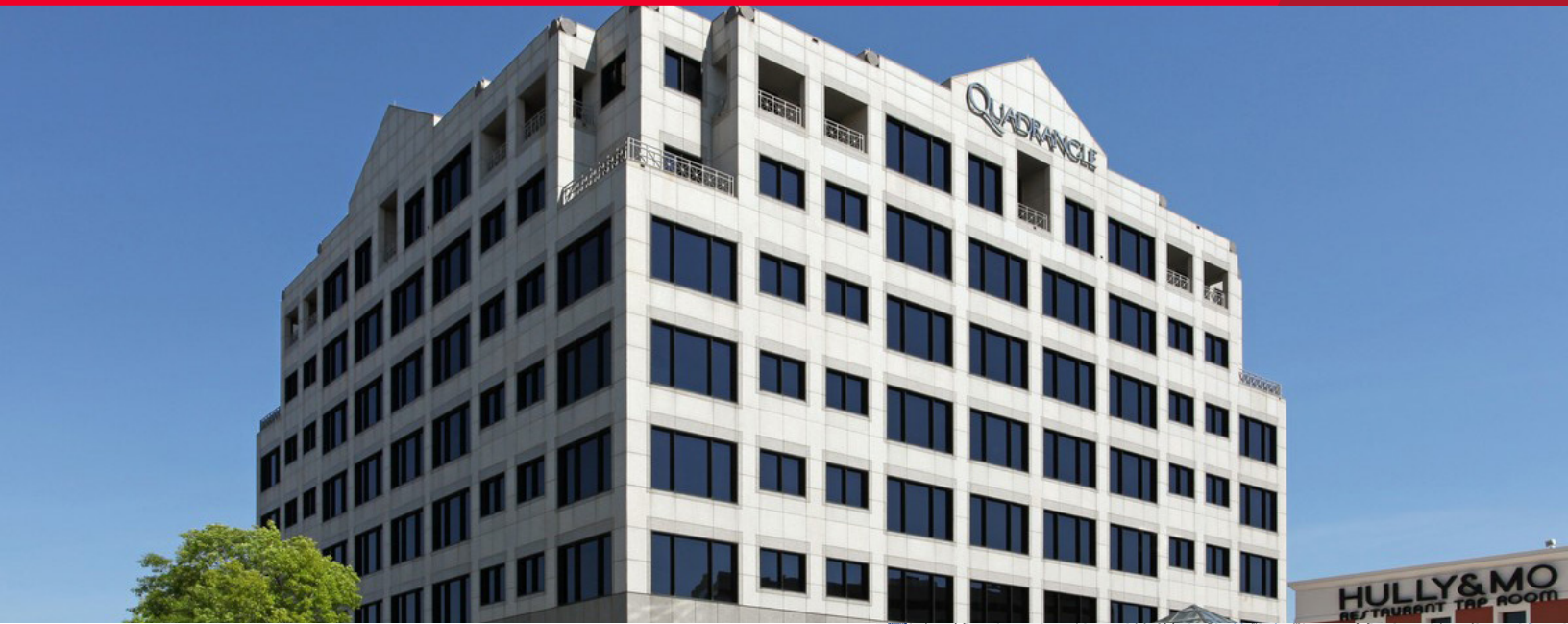


FOR SUBLEASE

Quadrangle Office Tower

Suites 660 & 625

2828 Routh St. | Dallas, Texas



3,210 SF Office Space

Suite Highlights

Suite 660 - 2,014 SF (Spec Suite)

- Sublease through October 31, 2018
- Four executive offices, conference room, large break room, large reception, open area for workstations

Suite 625 - 1,196 SF (Spec Suite)

- Sublease through October 31, 2018
- Two executive offices, conference room, large break room, reception, open area for workstations

Property Highlights

- Class A Uptown Office Building
- Walk Score of 93
- Covered parking at 3.0 per 1,000
- On-site Management and 24 hour security surveillance
- Restaurants on site: Dream Café, Momo's Pasta, Tacos and Tequila, British Beverage Company, Crush Craft and more
- Dozens of shops and restaurants within walking distance
- One block from McKinney Avenue Trolley
- Close proximity to the Katy Trail



Travis Boothe

Director

+1 972 663 9843

travis.boothe@cushwake.com

Mike Wyatt

Executive Managing Director

+1 972 663 9660

mike.wyatt@cushwake.com

2021 McKinney Ave, Suite 900

Dallas, Texas 75201

main +1 972 663 9600

fax +1 972 663 9955

cushmanwakefield.com

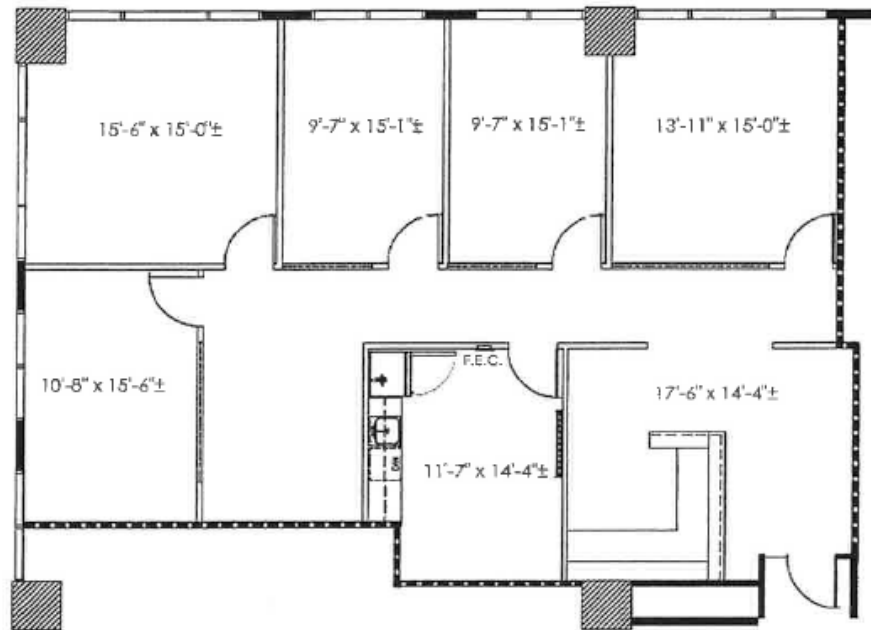
Quadrange Office Tower

Suites 660 & 625

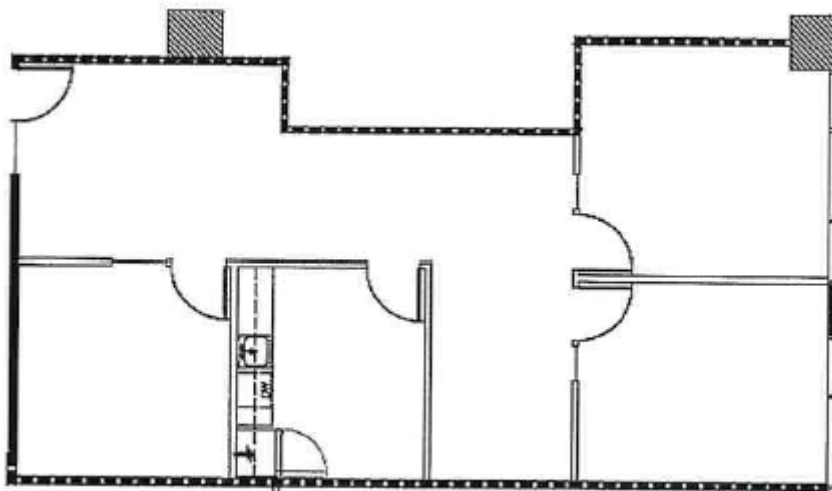
2828 Routh St. | Dallas, Texas

Floor Plans

Suite 660 (2,014 SF)



Suite 625 (1,196 SF)



Travis Boothe
Director
+1 972 663 9843
travis.boothe@cushwake.com

Mike Wyatt
Executive Managing Director
+1 972 663 9660
mike.wyatt@cushwake.com

2021 McKinney Ave, Suite 900
Dallas, Texas 75201
main +1 972 663 9600
fax +1 972 663 9955
cushmanwakefield.com