

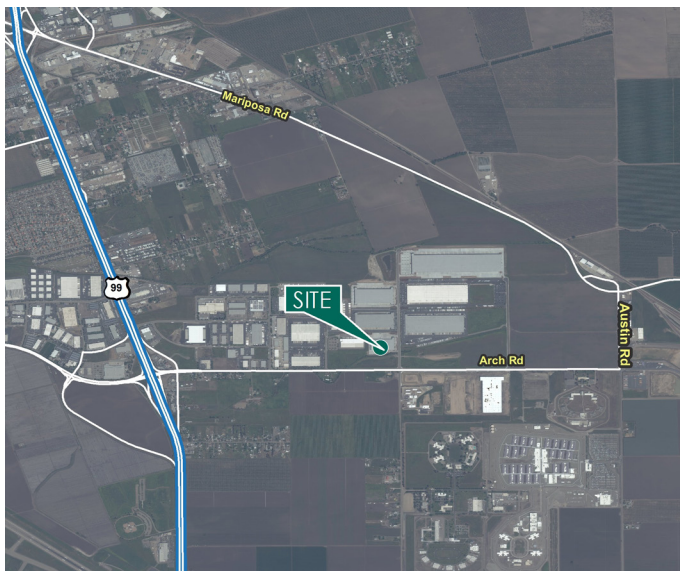
# ±186,944 SF

## Industrial Space For Lease



## Prologis Park Stockton 11

4733 Newcastle Road  
Stockton, California



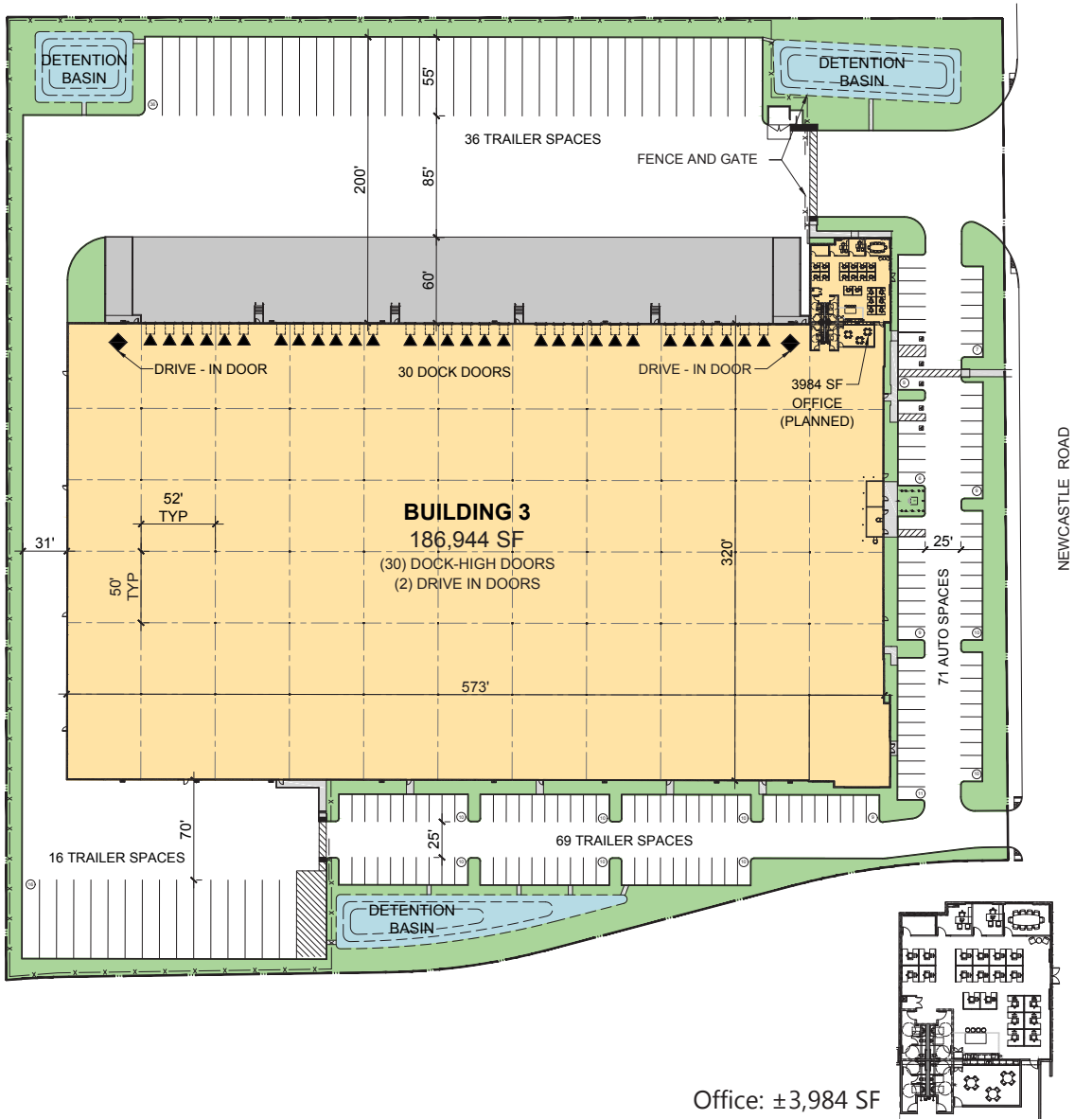
### FACILITY

- ±186,944 SF
- Dimensions: 320' x 573'
- Parcel Acres: ±10.29
- Office: ±3,984 SF
- 30' minimum interior ceiling clearance
- ESFR fire suppression system
- 52' x 50' column spacing
- 60' speed bays
- 6" DuctileCrete Engineered Slab
- 1,600 amps; 277/480 volts; 3 phase
- Single Load Design
- Thirty (30) 9' x 10' dock door positions
- Two (2) 12' x 14' grade level doors
- 200' truck court with 60' concrete aprons
- 140 Auto parking stalls
- 52 trailer parking stalls
- Designated Opportunity Zone

# ±186,944 SF



## Industrial Space For Lease



Office: ±3,984 SF

**Cushman & Wakefield**  
Kevin Dal Porto  
Executive Managing Director  
kevin.dalporto@cushwake.com  
ph +1 209 601 2476  
DRE Lic #01212935  
3255 West March Lane Suite 230  
Stockton, CA 95219

**Cushman & Wakefield**  
Blake Rasmussen  
Executive Managing Director  
blake.rasmussen@cushwake.com  
ph +1 209 481 7044  
DRE Lic #01010250  
3255 West March Lane Suite 230  
Stockton, CA 95219

**Cushman & Wakefield**  
John McManus, CCIM, MCR  
Executive Managing Director  
john.mcmanus@cushwake.com  
ph +1 510 891 5817  
DRE Lic #01129064  
555 12th Street, Suite 1400  
Oakland, CA 94607

**Prologis**  
Matt Drury  
Vice President, Market Officer  
mdrury@prologis.com  
ph +1 209 833 5389  
DRE Lic #01901364  
815 International Parkway  
Tracy, CA 95377

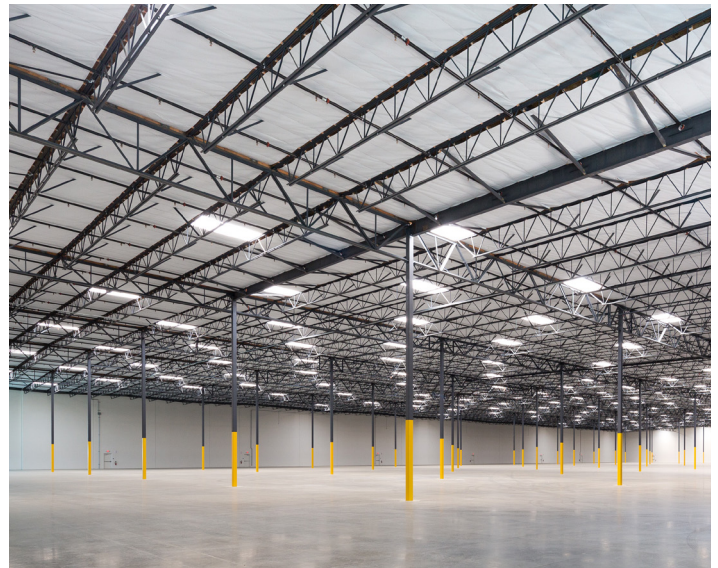




# ±186,944 SF



## Industrial Space For Lease



**Cushman & Wakefield**  
Kevin Dal Porto  
Executive Managing Director  
kevin.dalporto@cushwake.com  
ph +1 209 601 2476  
DRE Lic #01212935  
3255 West March Lane Suite 230  
Stockton, CA 95219

**Cushman & Wakefield**  
Blake Rasmussen  
Executive Managing Director  
blake.rasmussen@cushwake.com  
ph +1 209 481 7044  
DRE Lic #01010250  
3255 West March Lane Suite 230  
Stockton, CA 95219

**Cushman & Wakefield**  
John McManus, CCIM, MCR  
Executive Managing Director  
john.mcmanus@cushwake.com  
ph +1 510 891 5817  
DRE Lic #01129064  
555 12th Street, Suite 1400  
Oakland, CA 94607

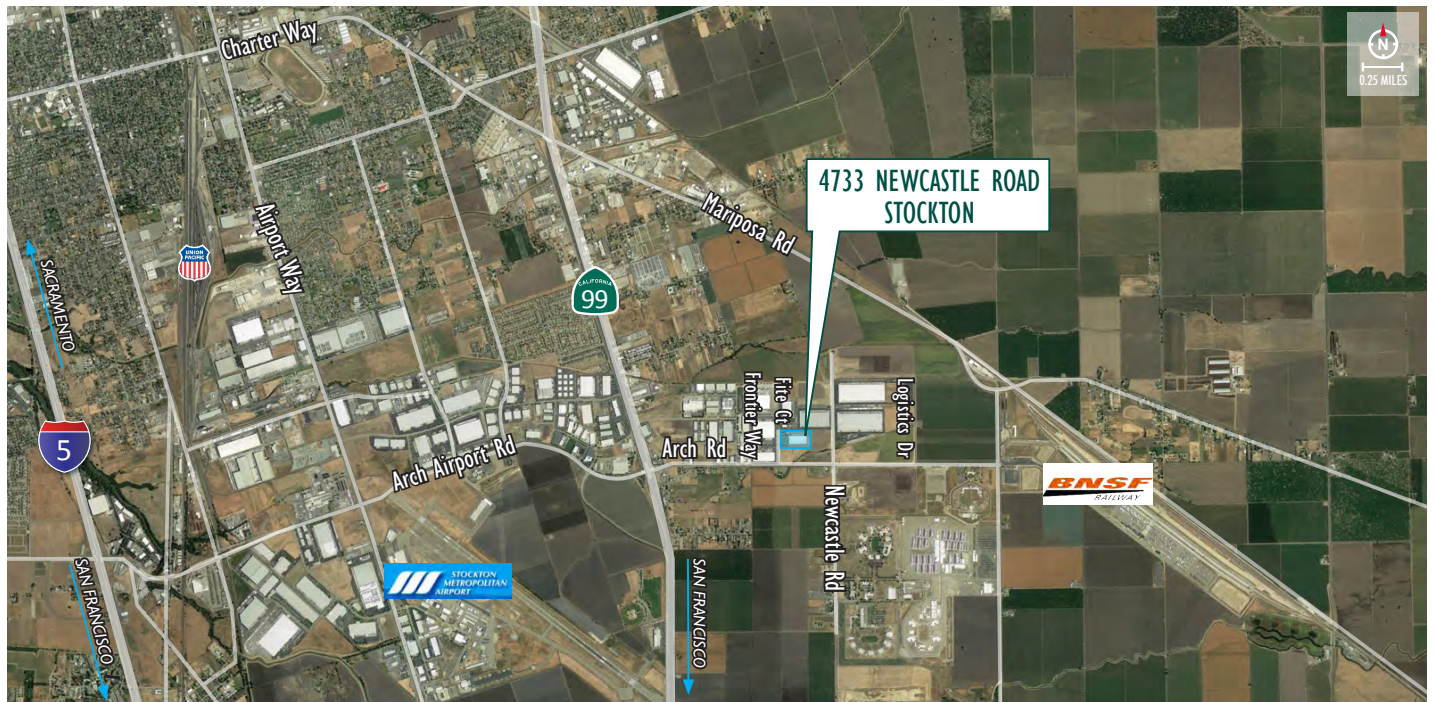
**Prologis**  
Matt Drury  
Vice President, Market Officer  
mdrury@prologis.com  
ph +1 209 833 5389  
DRE Lic #01901364  
815 International Parkway  
Tracy, CA 95377



# ±186,944 SF



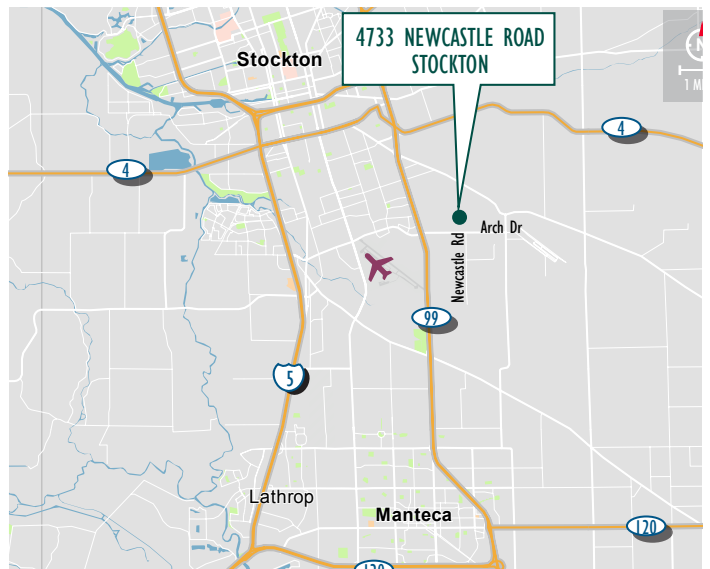
## Industrial Space For Lease



### AREA MAP



### VICINITY MAP



**Cushman & Wakefield**  
Kevin Dal Porto  
Executive Managing Director  
kevin.dalporto@cushwake.com  
ph +1 209 601 2476  
DRE Lic #01212935  
3255 West March Lane Suite 230  
Stockton, CA 95219

**Cushman & Wakefield**  
Blake Rasmussen  
Executive Managing Director  
blake.rasmussen@cushwake.com  
ph +1 209 481 7044  
DRE Lic #01010250  
3255 West March Lane Suite 230  
Stockton, CA 95219

**Cushman & Wakefield**  
John McManus, CCIM, MCR  
Executive Managing Director  
john.mcmanus@cushwake.com  
ph +1 510 891 5817  
DRE Lic #01129064  
555 12th Street, Suite 1400  
Oakland, CA 94607

**Prologis**  
Matt Drury  
Vice President, Market Officer  
mdrury@prologis.com  
ph +1 209 833 5389  
DRE Lic #01901364  
815 International Parkway  
Tracy, CA 95377

