

FOR SUBLEASE

# NBC TOWER

## 455 North Cityfront Plaza

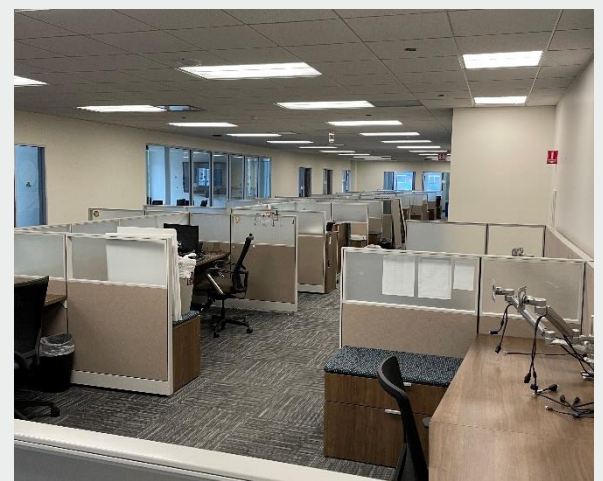
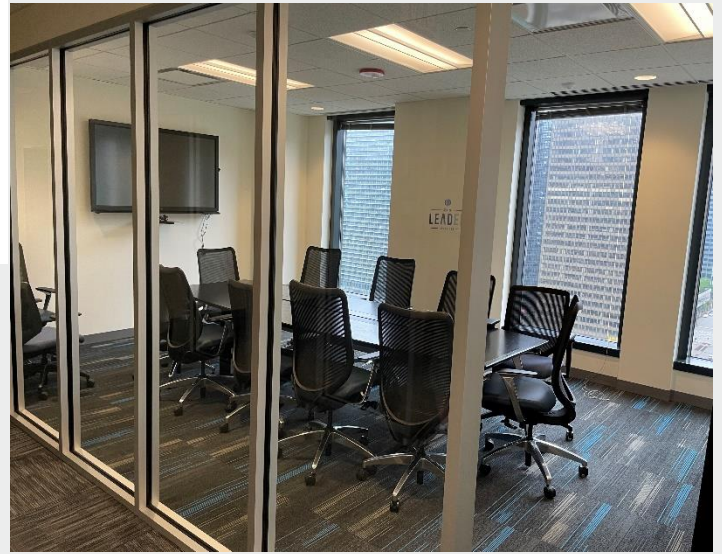
11,748 RSF | 17<sup>TH</sup> FLOOR

## Sublease Highlights

- Available Immediately
- Term Through July 31, 2027
- Asking Rent: Negotiable
- 19 Offices
- 57 Workstations
- 2 Conference Rooms
- Reception

### Building Amenities Include:

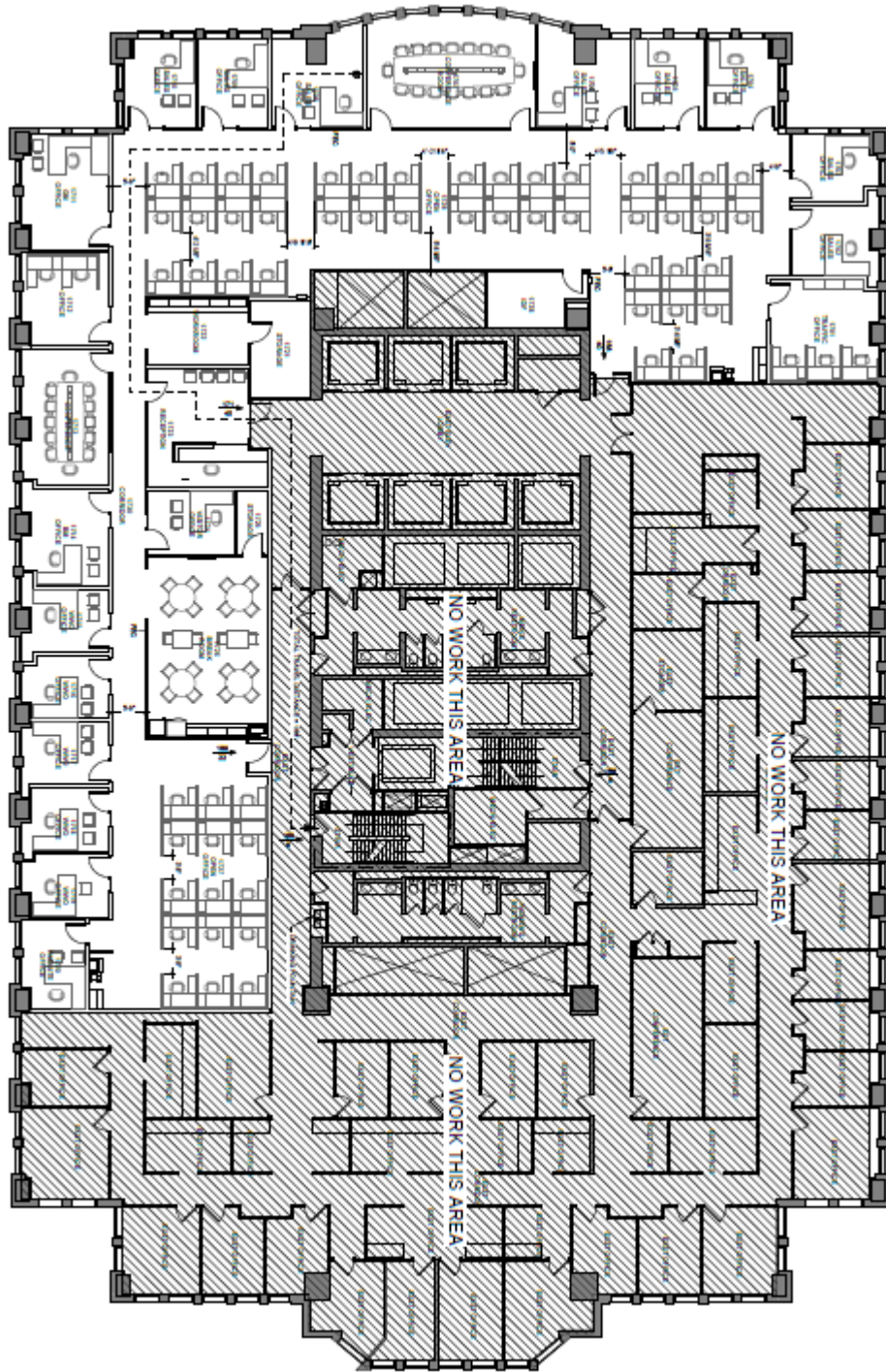
- Fitness Center
- Conferencing Facility
- Tenant Lounge
- Cafeteria
- Convenience Store



**Scott Shelbourne**  
+1 312 470 1884  
[Scott.Shelbourne@cushwake.com](mailto:Scott.Shelbourne@cushwake.com)

**Jack Tunncliff**  
+1 312 871 5024  
[Jack.Tunncliff@cushwake.com](mailto:Jack.Tunncliff@cushwake.com)

# FLOORPLAN



FOR SUBLEASE

# NBC TOWER 455 North Cityfront Plaza

11,748 RSF | 17<sup>TH</sup> FLOOR



**CUSHMAN &  
WAKEFIELD**

©2020 Cushman & Wakefield. All rights reserved. The information contained in this communication is strictly confidential. This information has been obtained from sources believed to be reliable but has not been verified. NO WARRANTY OR REPRESENTATION, EXPRESS OR IMPLIED, IS MADE AS TO THE CONDITION OF THE PROPERTY (OR PROPERTIES) REFERENCED HEREIN OR AS TO THE ACCURACY OR COMPLETENESS OF THE INFORMATION CONTAINED HEREIN, AND SAME IS SUBMITTED SUBJECT TO ERRORS, OMISSIONS, CHANGE OF PRICE, RENTAL OR OTHER CONDITIONS, WITHDRAWAL WITHOUT NOTICE, AND TO ANY SPECIAL LISTING CONDITIONS IMPOSED BY THE PROPERTY OWNER(S). ANY PROJECTIONS, OPINIONS OR ESTIMATES ARE SUBJECT TO UNCERTAINTY AND DO NOT SIGNIFY CURRENT OR FUTURE PROPERTY PERFORMANCE.