

# 1010 PACIFIC AVENUE

Santa Cruz, California



PRIME SANTA CRUZ RETAIL SUITES / FOR LEASE



**GROUND FLOOR OF MODERN  
APARTMENT BUILDING**

[cushmanwakefield.com](http://cushmanwakefield.com)

# 1010 PACIFIC AVENUE

Santa Cruz, California

## OVERVIEW

PRIME SANTA CRUZ RETAIL SUITES / FOR LEASE

### PROPERTY HIGHLIGHTS

- Busy corner of Pacific Avenue & Cathcart Street
- Co-tenants include Sandwich Spot & Quickly
- Excellent visibility
- Restroom in space
- Close to Transit Center
- Located in Downtown Parking District - City lots and garages nearby

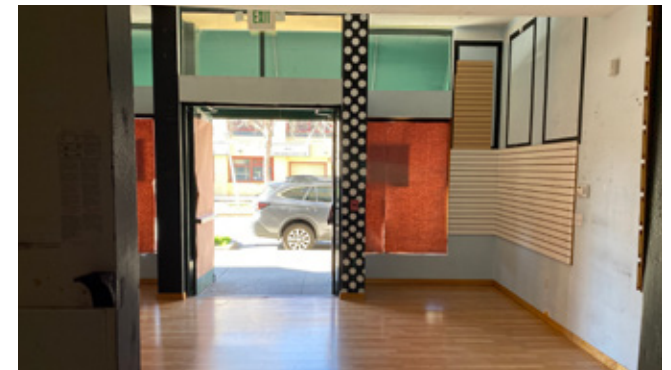
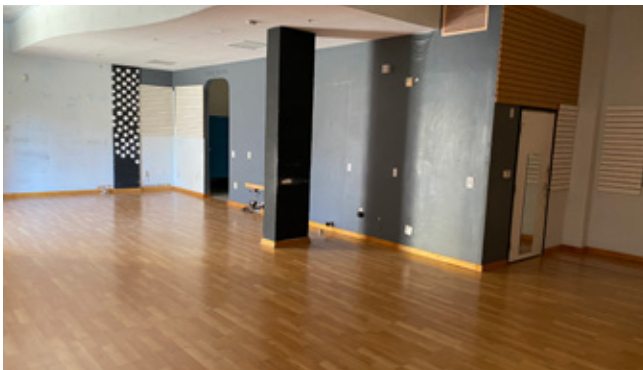
### LEASE RATE / SUITE DETAILS

- **Suite A & B:**  
±1,266 RSF Total Available  
Asking Rent: \$2.75 PSF/MO + NNN  
(NNN @±\$0.86 PSF/MO)
- **Suite C & D:**  
±1,264 RSF Total Available  
Asking Rent: \$2.75 PSF/MO + NNN  
(NNN @±\$0.86 PSF/MO)

#### Useful information:

[downtownsantacruz.com](http://downtownsantacruz.com)

[choosesantacruz.com](http://choosesantacruz.com)



# 1010 PACIFIC AVENUE

Santa Cruz, California

AERIAL MAP

PRIME SANTA CRUZ RETAIL SUITES / FOR LEASE



1010 PACIFIC AVENUE

# 1010 PACIFIC AVENUE

Santa Cruz, California

PRIME SANTA CRUZ RETAIL SUITES FOR LEASE

**Reuben Helick**  
Managing Director  
+1 831 647 2109  
reuben.helick@cushwake.com  
LIC #01171272

**Nick Greenup**  
Senior Associate  
+1 831 647 2106  
nicholas.greenup@cushwake.com  
LIC #02143358

Doud Arcade Building, Suite #202  
South Ocean Avenue  
P.O. Box 999  
Carmel-by-the-Sea, CA 93921  
+1 831 375 8000

[cushmanwakefield.com](https://cushmanwakefield.com)



©2024 Cushman & Wakefield. All rights reserved. The information contained in this communication is strictly confidential. This information has been obtained from sources believed to be reliable but has not been verified. NO WARRANTY OR REPRESENTATION, EXPRESS OR IMPLIED, IS MADE AS TO THE CONDITION OF THE PROPERTY (OR PROPERTIES) REFERENCED HEREIN OR AS TO THE ACCURACY OR COMPLETENESS OF THE INFORMATION CONTAINED HEREIN, AND SAME IS SUBMITTED SUBJECT TO ERRORS, OMISSIONS, CHANGE OF PRICE, RENTAL OR OTHER CONDITIONS, WITHDRAWAL WITHOUT NOTICE, AND TO ANY SPECIAL LISTING CONDITIONS IMPOSED BY THE PROPERTY OWNER(S). ANY PROJECTIONS, OPINIONS OR ESTIMATES ARE SUBJECT TO UNCERTAINTY AND DO NOT SIGNIFY CURRENT OR FUTURE PROPERTY PERFORMANCE.